



Authors: Diane Frew, Bernie McNally, Dr Emma Law, Dr Susan Shenkin, Alison McBain, Lesley Cousland, Dr Rosie Ashworth, Irina McLean and Maria Drummond

## Introduction

ENRICH Scotland works with care home staff, residents, relatives and researchers to improve the research infrastructure and opportunities available to the Scottish care home community.

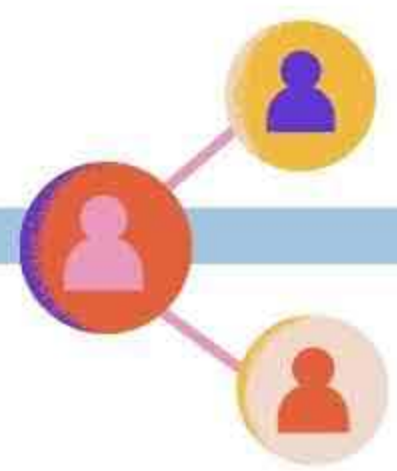
We have:

- A network of Research Ready care homes.
- A Patient and Public Involvement group called RICH (Research in Care Homes) Voices.

Members are supported by ENRICH Scotland to engage with research teams.

## Objectives

- To support care home staff, residents and relatives to increase their participation and involvement in care home-related research.
- To increase the quality and quantity of care home-related research in Scotland.



## Methods

**How We Have Helped**

- Recruitment (n=20)
- Expert advice (n=4)
- Pre-funding scoping for interest (n=4)
- PPI support (n=2)
- Co-Produced with ENRICH team (n=1)

**Participant Groups**

- Staff (n= 25)
- Residents (n=8)
- Relatives (n=2)

**Recruitment Support Methods**

- 11 Surveys
- 6 Interviews
- 2 Focus Groups
- 1 RCT
- 1 Workshop
- 1 Case Study

**Study Team Location**

- Scotland (n= 23)
- England (n= 9)

September 2022

## Results and Conclusions

Care home-related research is diverse. Specialist knowledge is needed to engage with care home staff, residents and relatives about research & to understand the processes and governance relevant for social care research in Scotland.

ENRICH Scotland will continue to work with researchers and all members of the care home community to ensure as many people as possible can access research opportunities.



Please contact [tay.enrichscotland@nhs.scot](mailto:tay.enrichscotland@nhs.scot)  
ENRICH Scotland is funded by the Chief Scientist Office