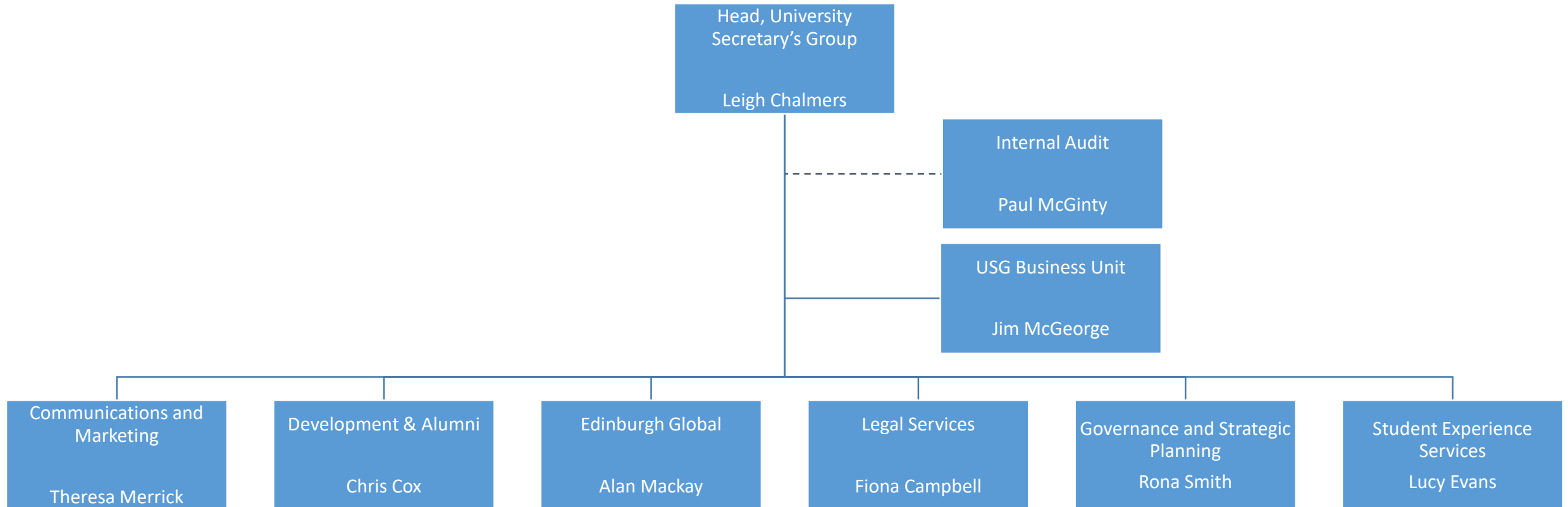


University Secretary's Group Organisational Chart (February 2023)



- **Edinburgh Global** has responsibility for Edinburgh Global and Student Recruitment & Admissions
- **Governance and Strategic Planning** has responsibility for Court Services, Strategic Planning and Business Intelligence
- **Legal Services** has responsibility for Legal Services, Records Management and Data Protection
- **Student Experience Services** has responsibility for Academic Services, Careers Service, Chaplaincy, Counselling Service, Institute for Academic Development, Registry, Student Disability and Learning Support Service, Student Welfare Service and University Health Service
- **Internal Audit** is independent of all functional areas of the University, and report directly to the Audit and Risk Committee (a standing committee of Court) to assure them that risks are managed effectively and controls are working as planned.