

# A New Student Centre



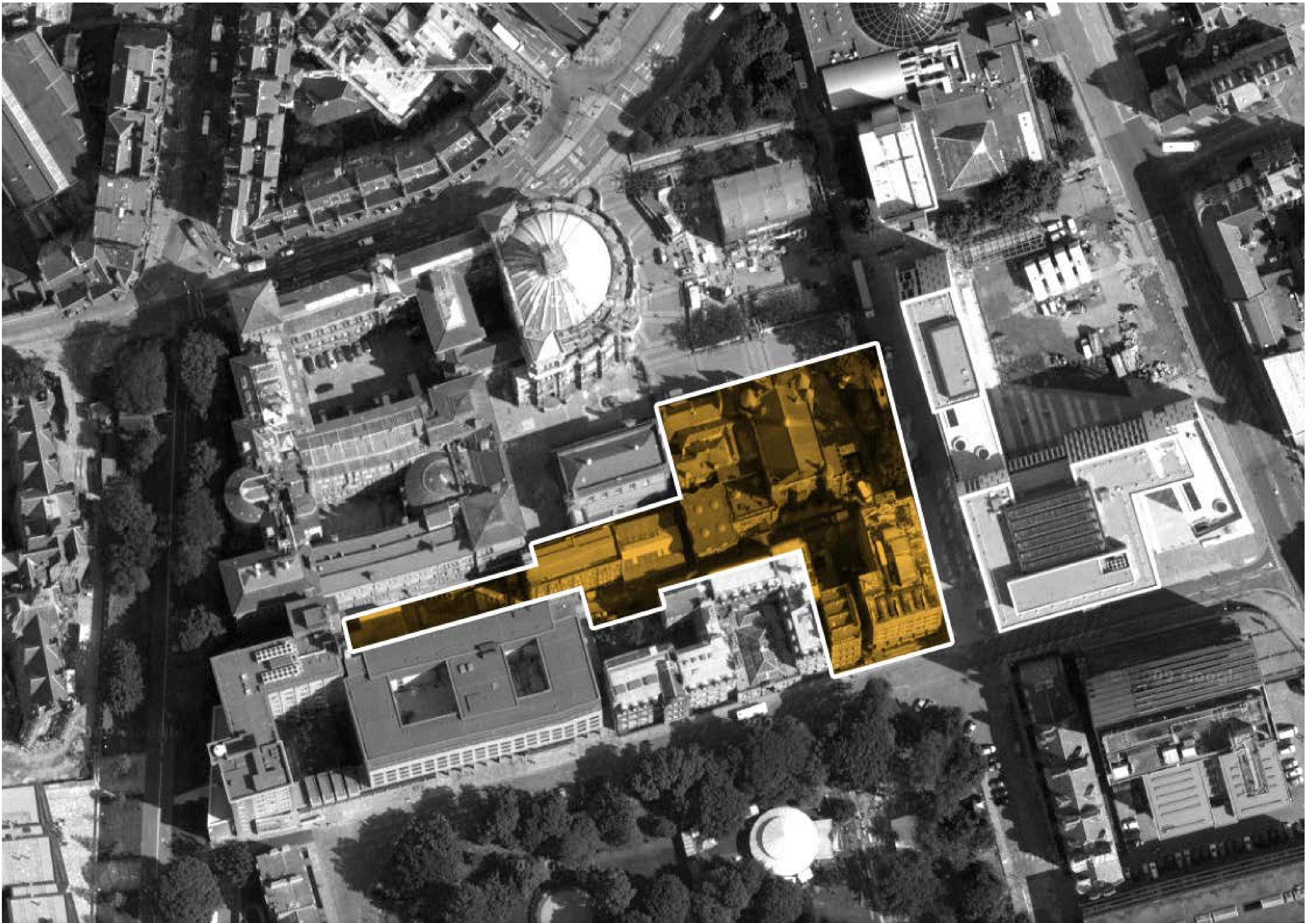
THE UNIVERSITY  
of EDINBURGH



This ambitious scheme will form a new dedicated hub for students, bringing together student services from the University and the Students' Association side by side for the first time.

The new Student Centre will provide a single place to access services that support student employability, finances, administration and wellbeing and success, both inside and outside the classroom.

Teviot Row House, the oldest purpose built Students' Union in the world, will be completely refurbished and made fully accessible, keeping its unique character but improving and expanding the range of services offered. Connections will also be formed with a brand new student services building on George Square.



## Your feedback matters

Let us know what you think of the Student Centre proposals. Comment today using the forms provided or complete our online form at: [www.ed.ac.uk/student-centre-consultation](http://www.ed.ac.uk/student-centre-consultation)

**Thank you for coming**



# Welcome



THE UNIVERSITY  
of EDINBURGH

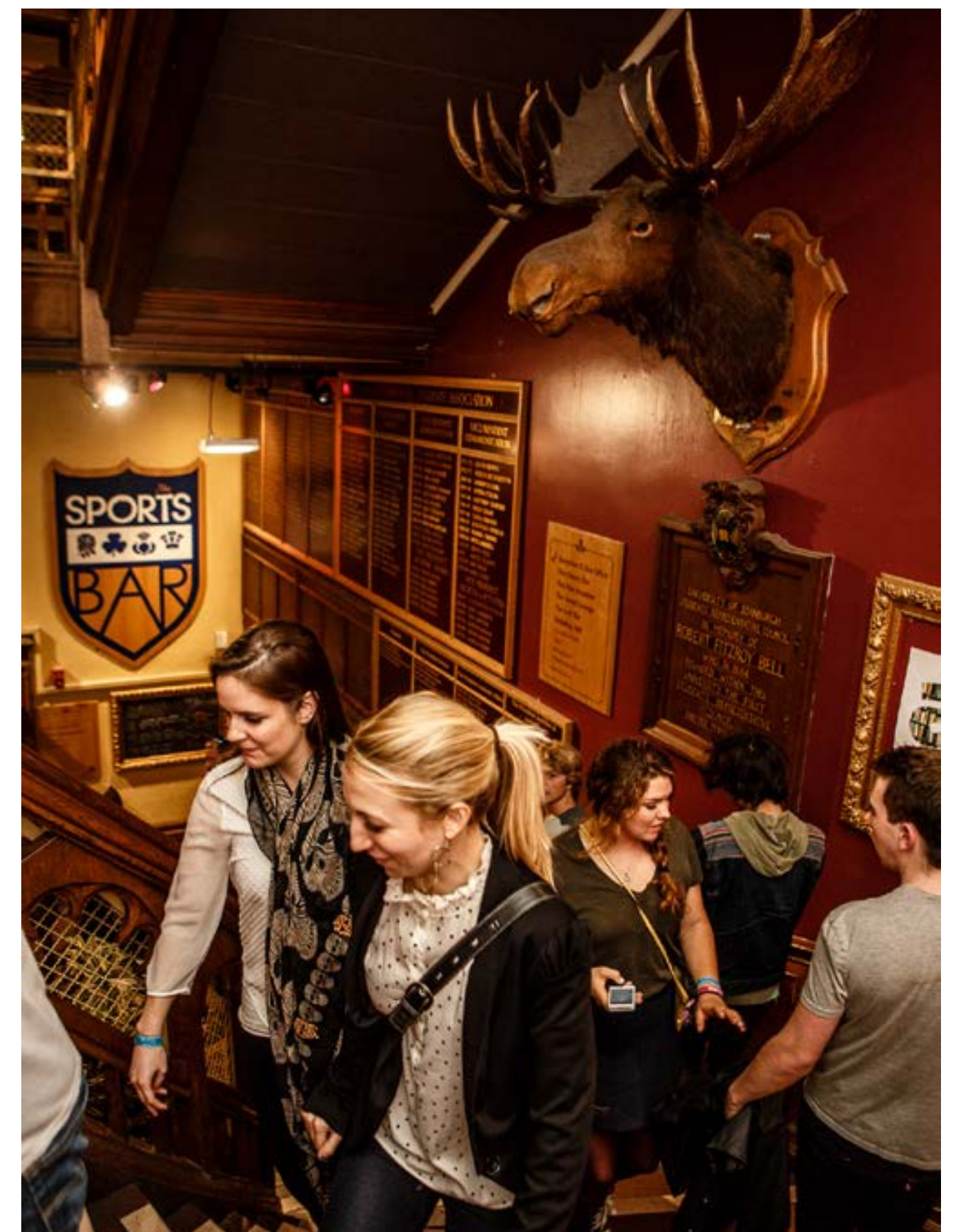


Thank you for taking the time to look at the updated drawings for the new Student Centre.

Teviot is in the heart of every student that has been through the University over the last 125 years; from the thrill of Welcome Week to the buzz of graduations and everything in between. This investment will bring key services of the University and Students' Association together to increase accessibility and support for students. This Student Centre is forging a path to ensure we can keep Teviot as our home from home for generations to come and make sure we always have a place on campus we can be proud to call our own.

Patrick Kilduff

**Students' Association President 2017/18**



## About Edinburgh University Students' Association

Edinburgh University Students' Association exists to represent and support over 39,500 University of Edinburgh students through their time at the University; whether they be Undergraduate or Postgraduate (taught, research or Online Distance Learning). All students enrolled at the University gain automatic membership to the Students' Association.

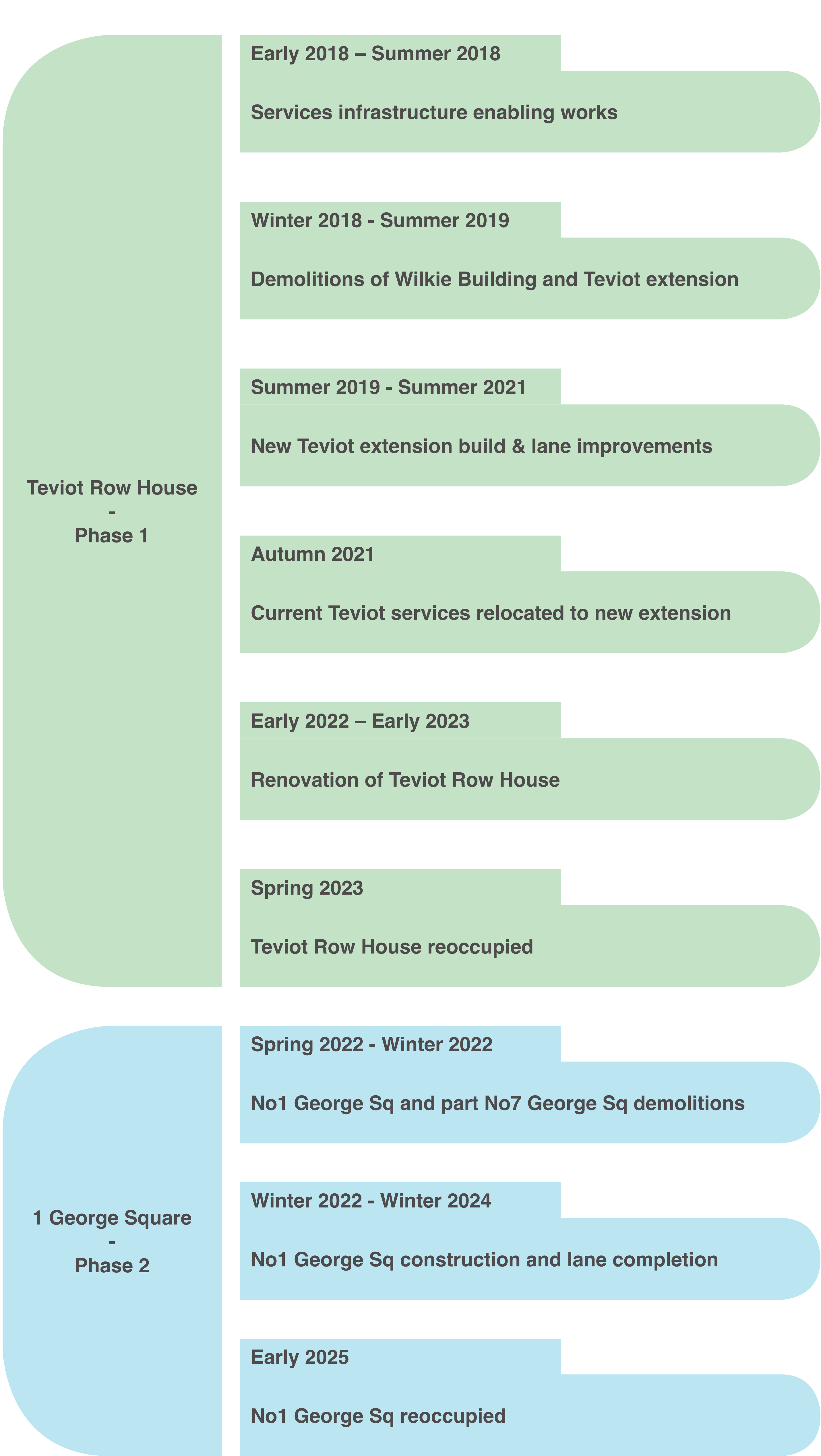
Our core values are:

**Students first**  
**Power to change**  
**A place for all**  
**Home from home**

We are committed to representing and supporting student interests and promoting student-led change.

**Find out more at [eusa.ed.ac.uk](http://eusa.ed.ac.uk)**









The original Teviot Row House was designed in a 16th century Scots Palace style. Externally, the building features crow stepped gables and drum towers which are reminiscent of the **Falkland and Holyrood Palaces**.

There is also a distinctive stacking of Baronial-type spaces, from the ground floor entrance courts, to the first floor gallery rooms, to the second floor Debating Hall.

Falkland Palace



Holyrood Palace



Teviot Existing Elevation



Holyrood Palace Gatehouse



Loft & Rooftop  
Falkland Palace library



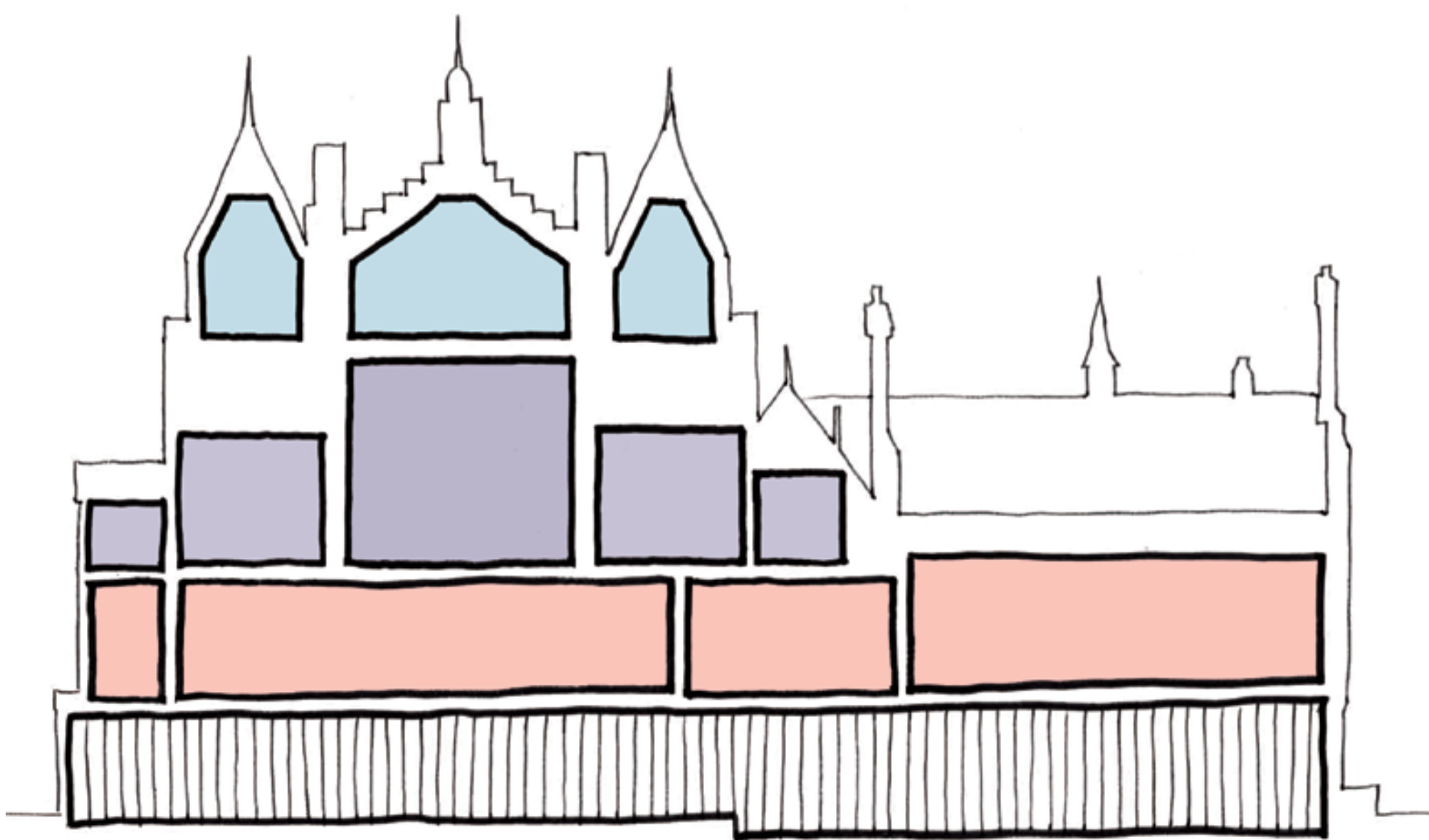
Halls & Ante-Rooms  
Falkland Palace Chapel



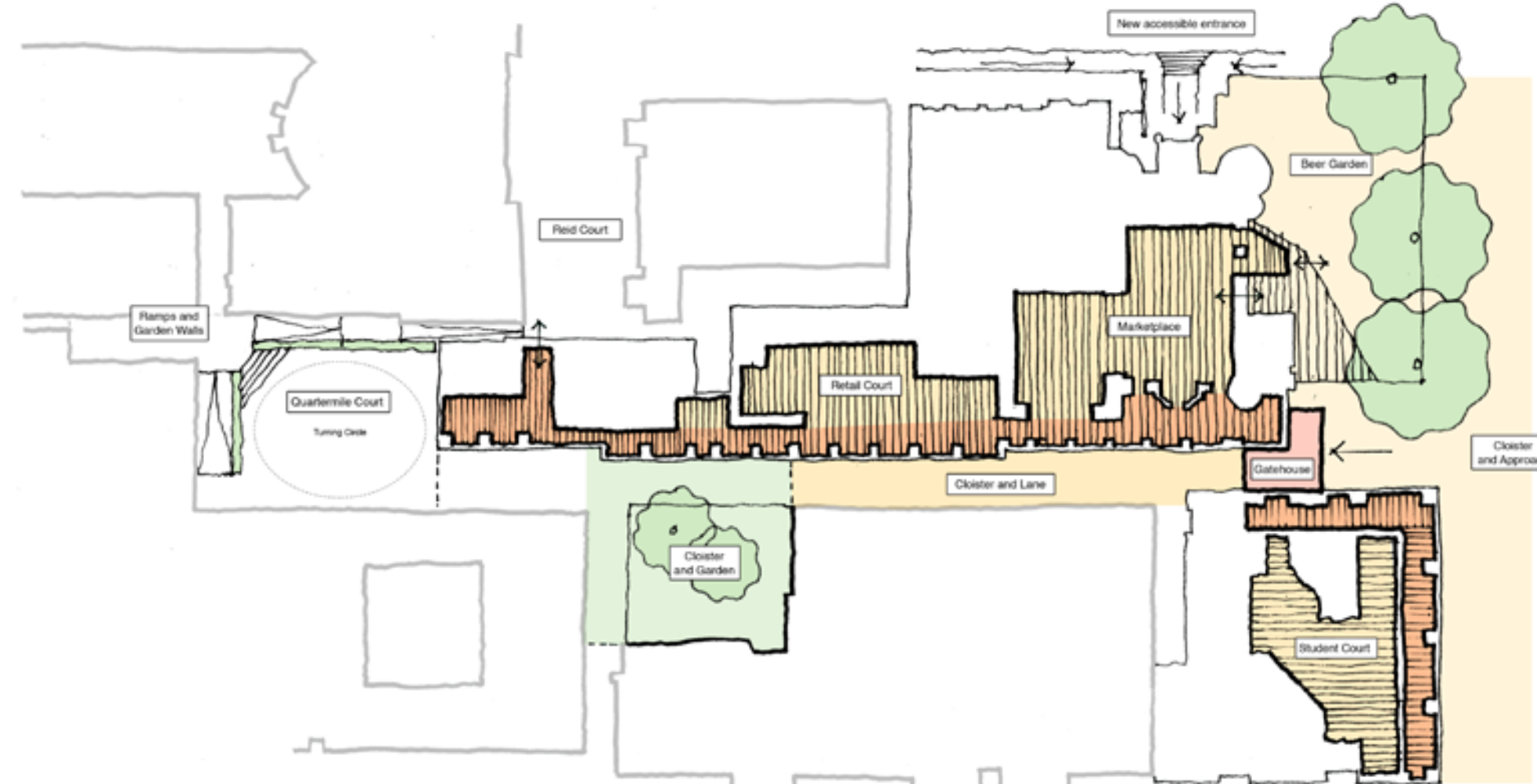
Gallery Rooms  
Holyrood Palace Great Gallery



Gatehouse, Cloister,  
Cloister, Holyrood Palace



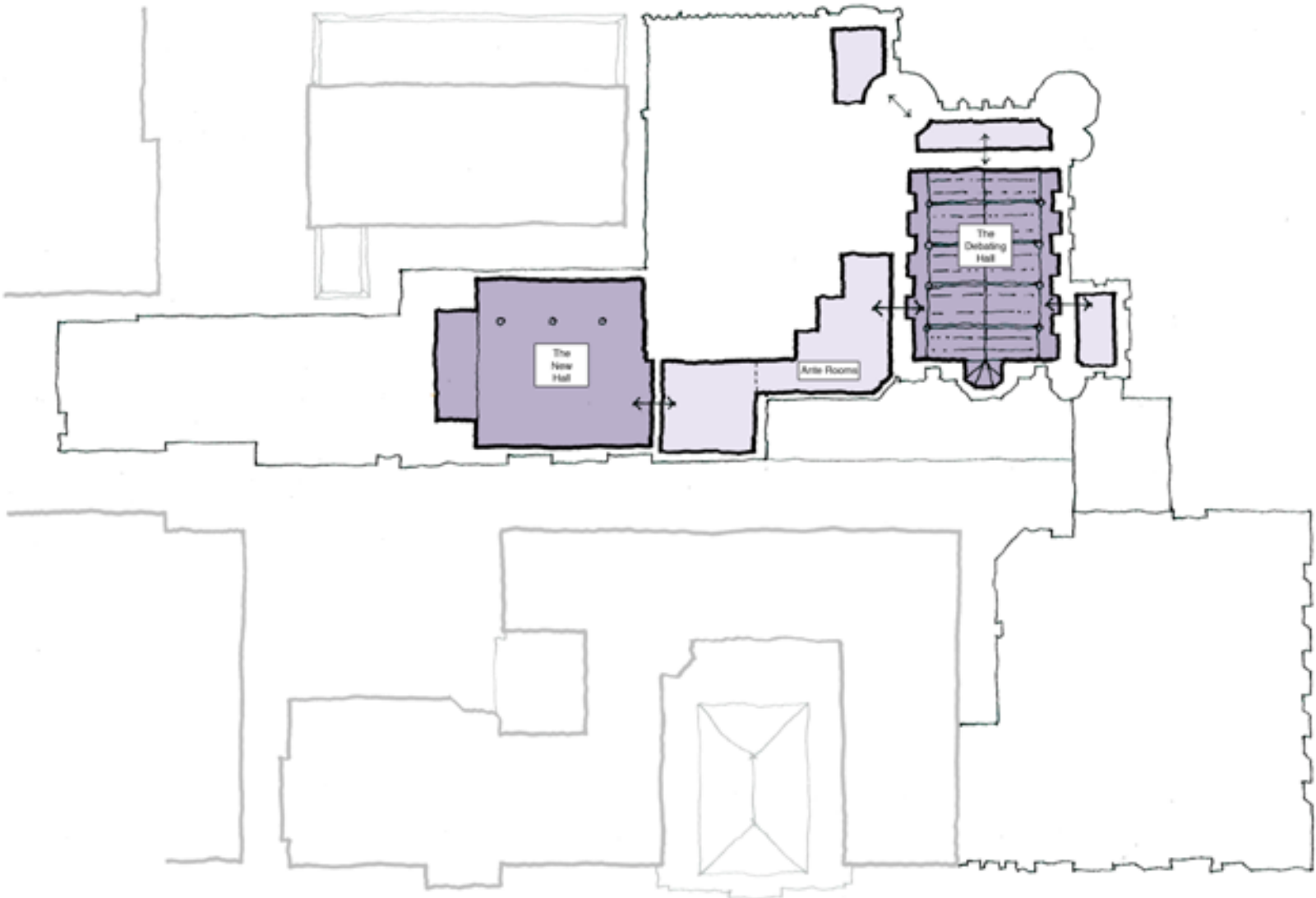
Sectional Diagram



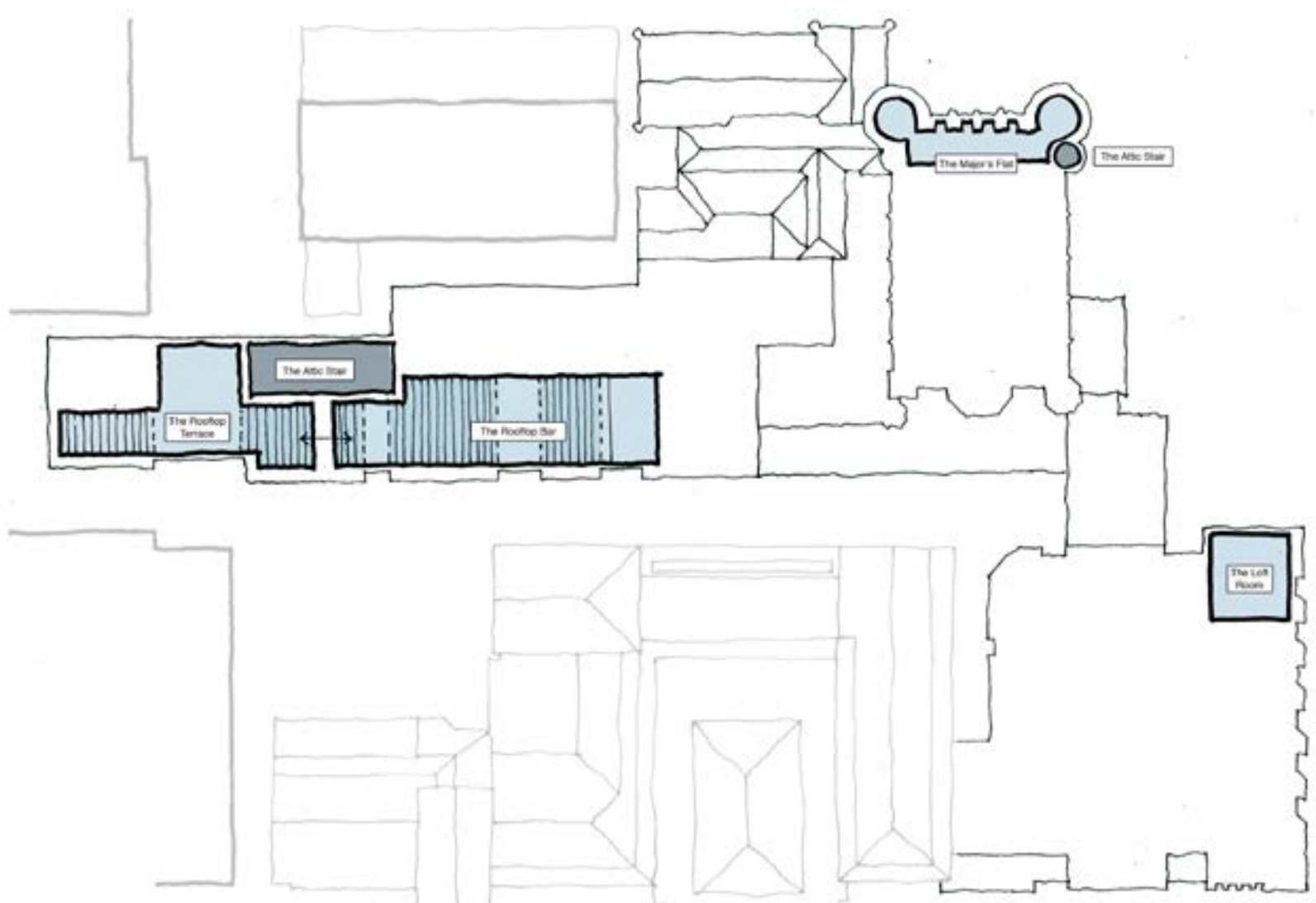
Ground Floor - Gate House, Cloister and Courtyards



First Floor Piano Nobile - Gallery Rooms



Second Floor - Halls and Ante-rooms



Top Floor - Loft and Rooftop





### George Square

The proposed new building for student services, growing from the context and fabric of George Square's existing architecture.



### Charles Street

Reminiscent of the Gatehouse at Holyrood Palace, the new entrance to Charles Street Lane draws pedestrians into the lane and provides a common entrance to 1GS and Teviot. The Gatehouse connects Teviot and 1GS at first floor level.

### Bristo Square

The Teviot Garden and trees are retained, setting the context for the new Gatehouse and facade of 1GS.







**Teviot Aerial**

The proposed extension to Teviot replaces existing accommodation along the lane, respecting the rear facade of Teviot and creating a new garden and link through to Bristo Square.



**View from Cloister Garden**

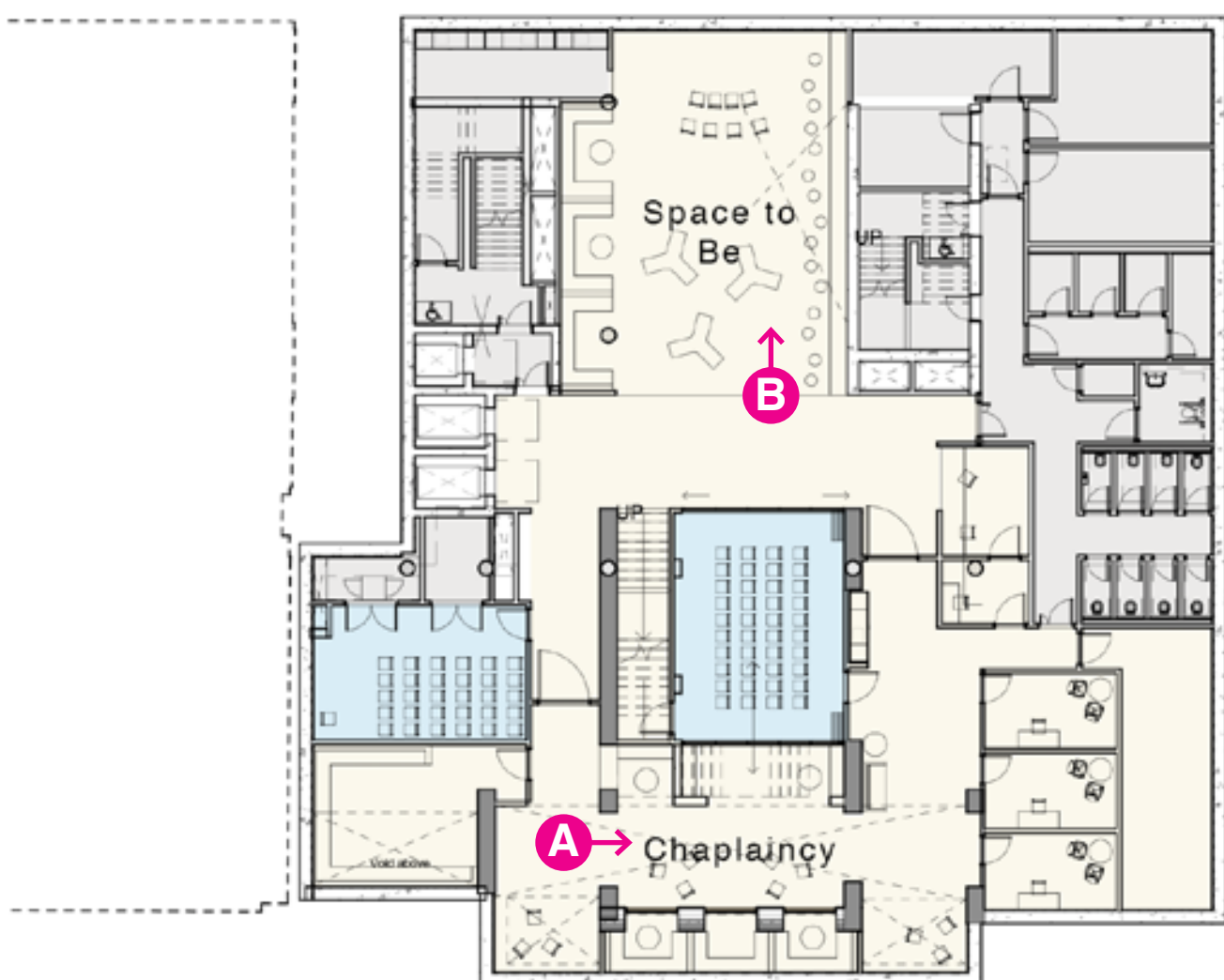
The ground floor at Teviot opens onto the lane and proposed garden, offering direct access to the rooftop bar and terrace.



**Charles Street Lane**

Charles Street Lane is proposed as a bright and lively student space, opening into the ground floor marketplace in existing Teviot.



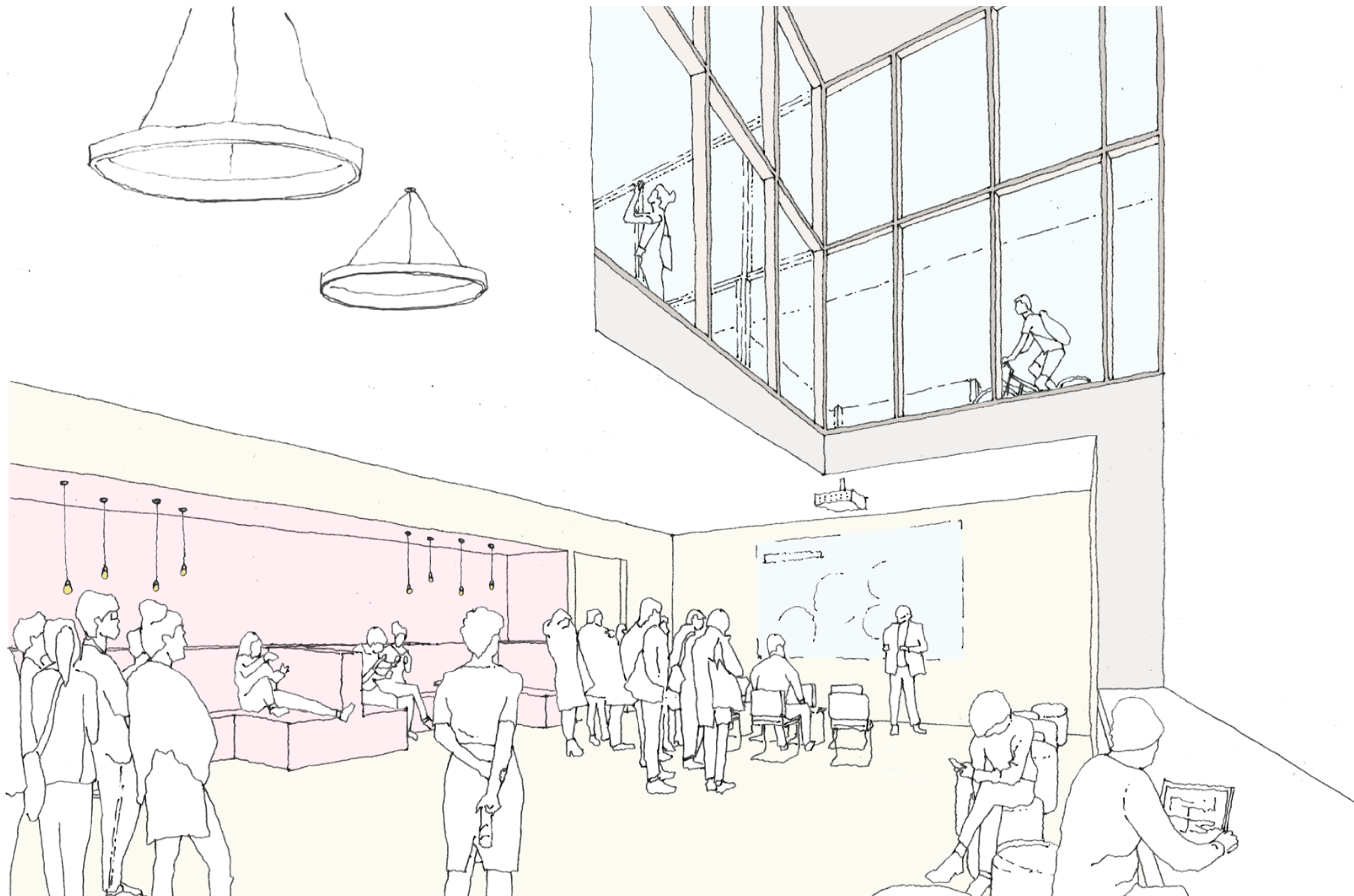


**A) Chaplaincy**

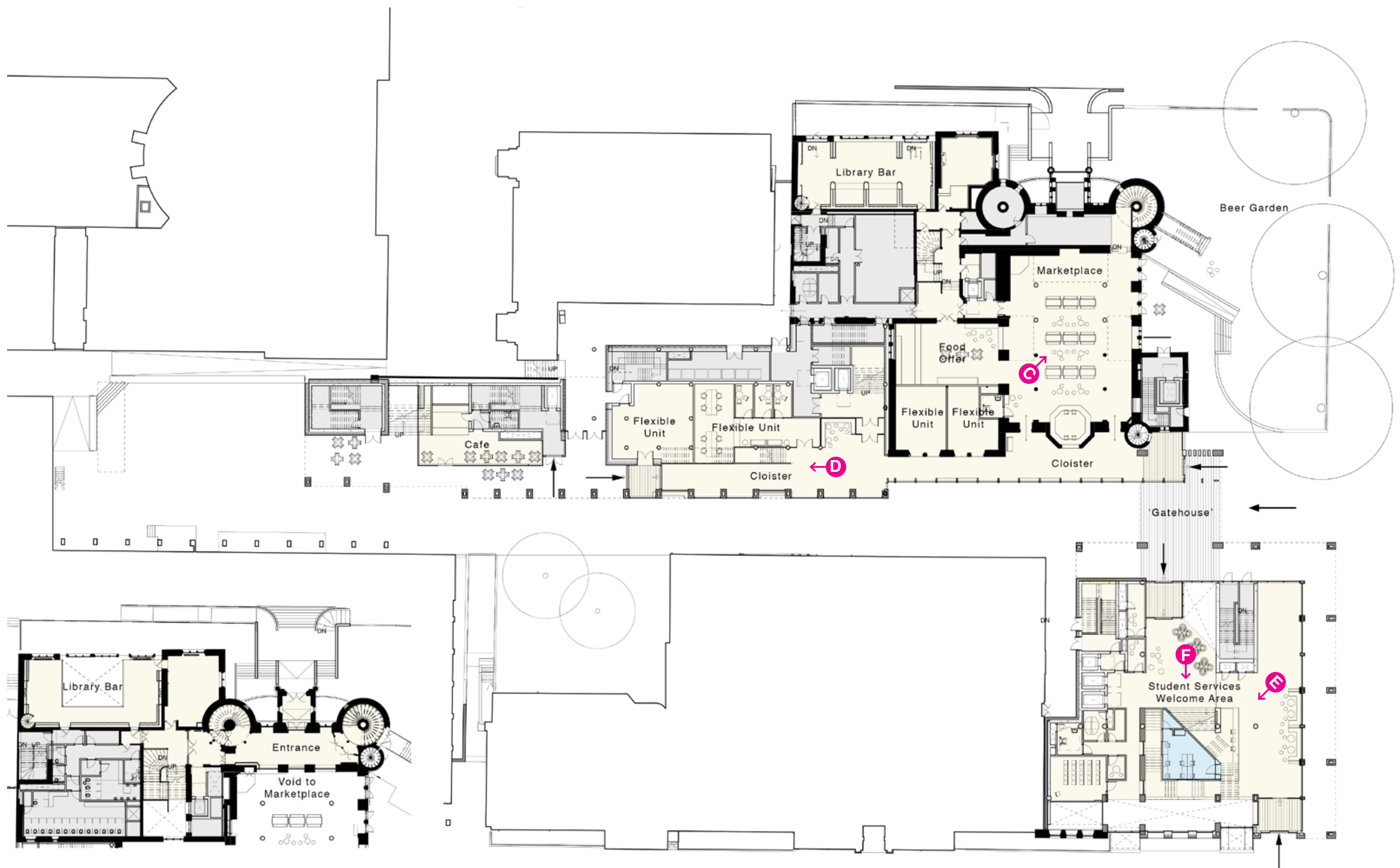
Visible from George Square, a new Chaplaincy is proposed for basement level at 1GS.

**B) Space to Be**

A new social and collaborative student space is proposed for the basement of 1GS







Proposed Ground Floor Plan

C) Marketplace

With original features exposed, the ground floor of Teviot is proposed as a new marketplace opening into the lane and existing Teviot Garden.

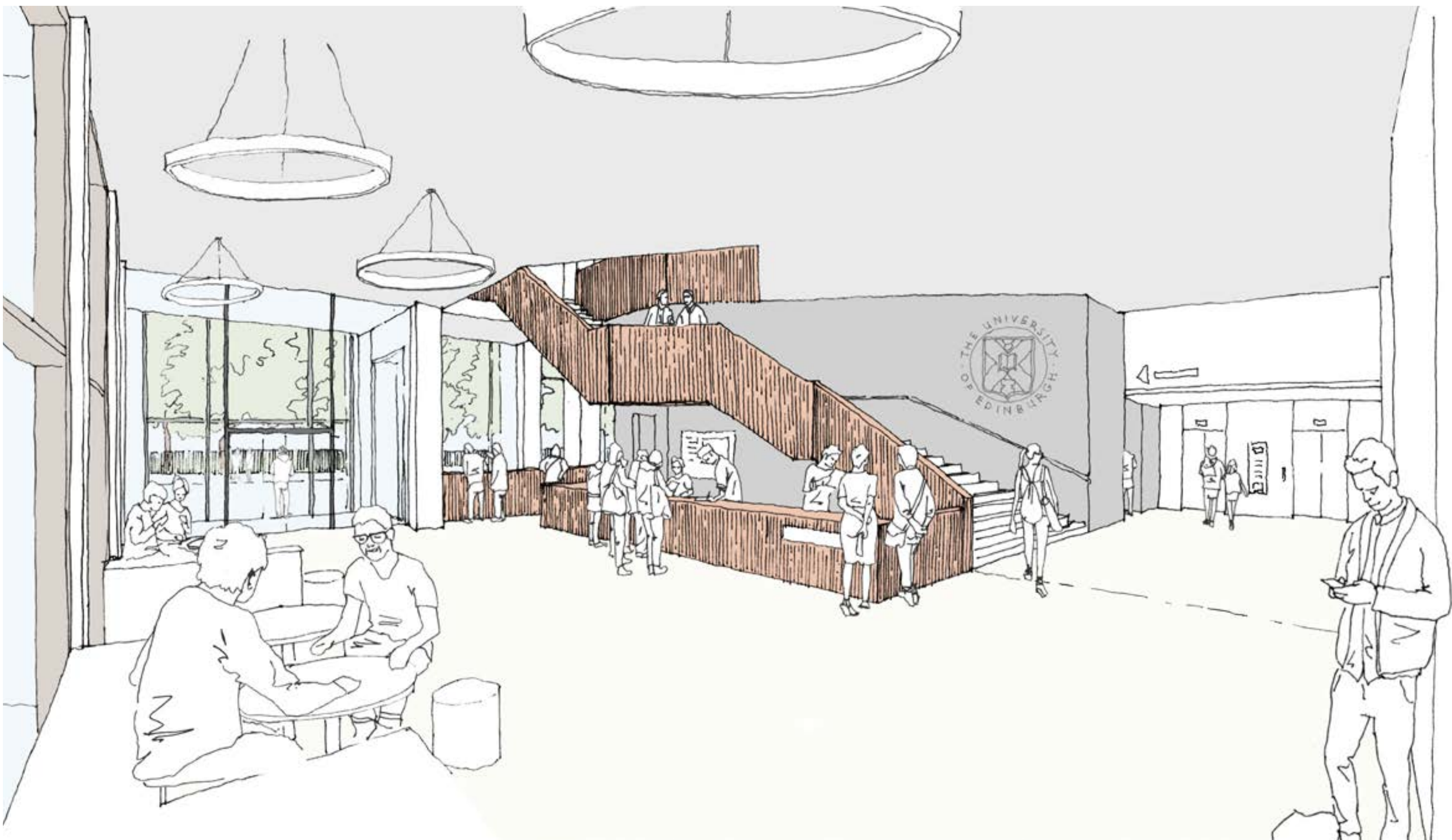






D) Ground Floor Teviot Gallery

The new ground floor Teviot gallery includes a number of retail units, and an open stair that links to first floor level.



E) 1GS Entrance

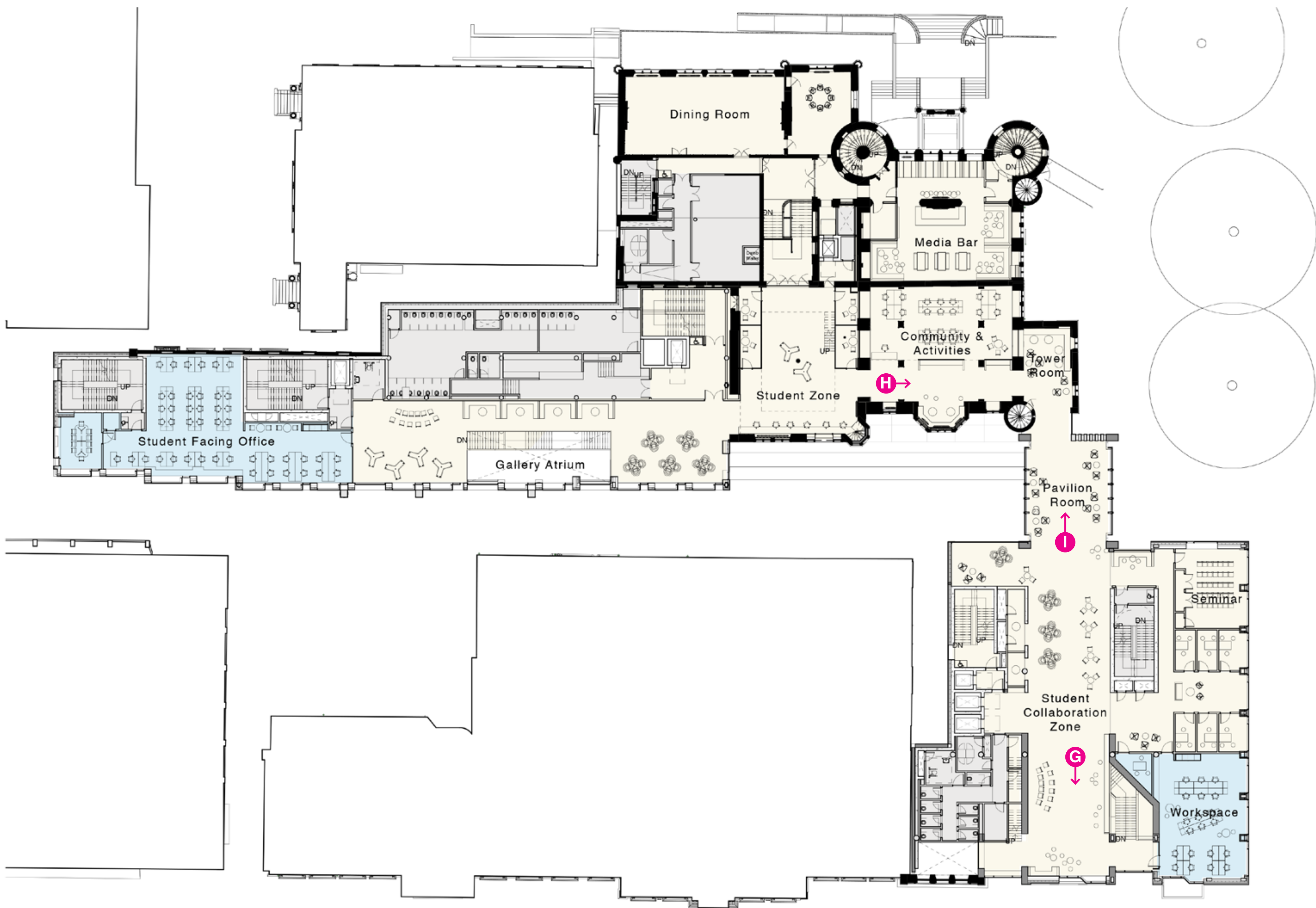
The new entrance foyer in No.1 George Square is a bright and open space, with a welcoming reception area and visible links to upper and lower levels.



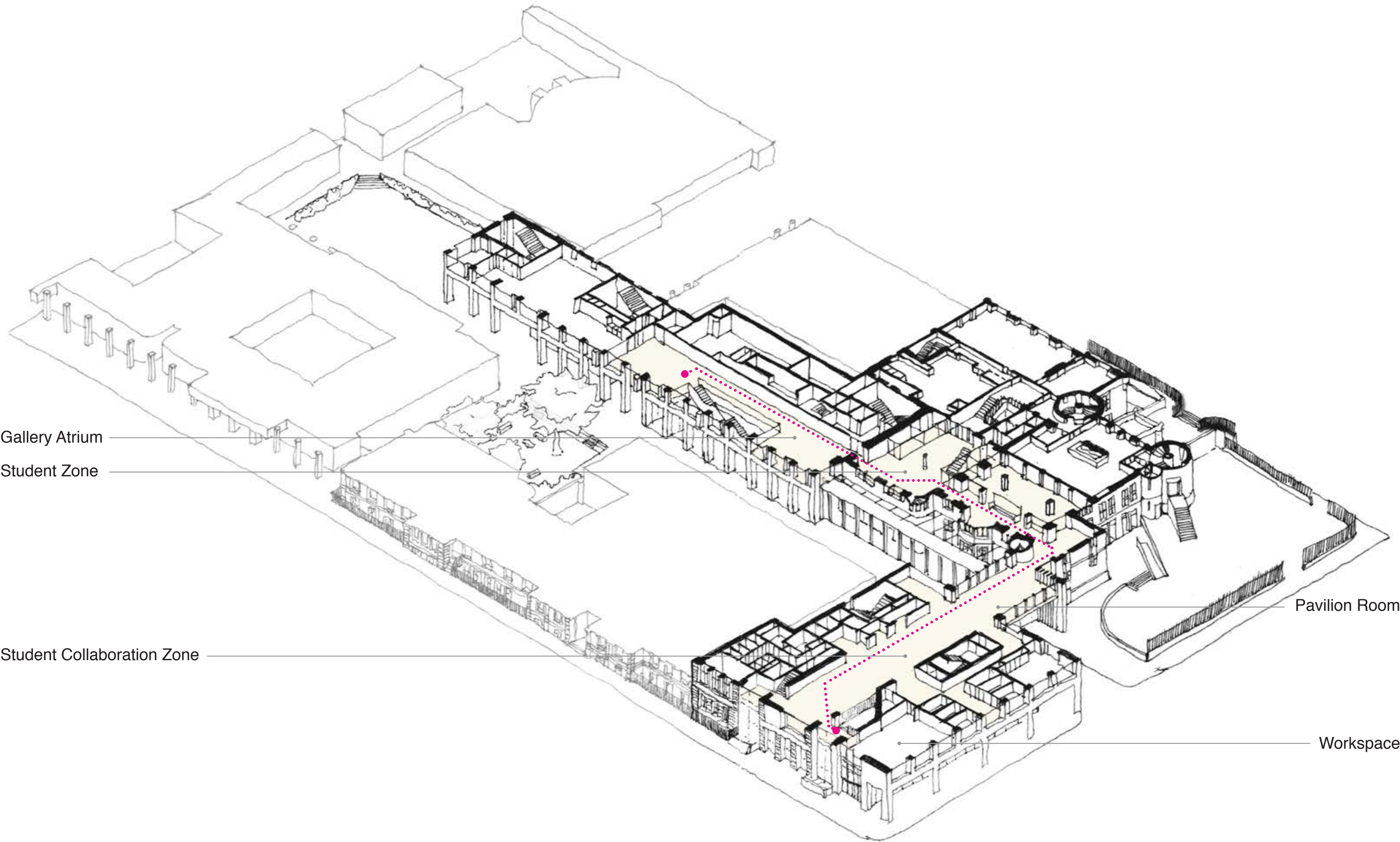
F) 1GS Main Stair

The new main stair in No.1 George Square leads to the student collaboration zone at first floor level, and the new link to the Gatehouse and Teviot.



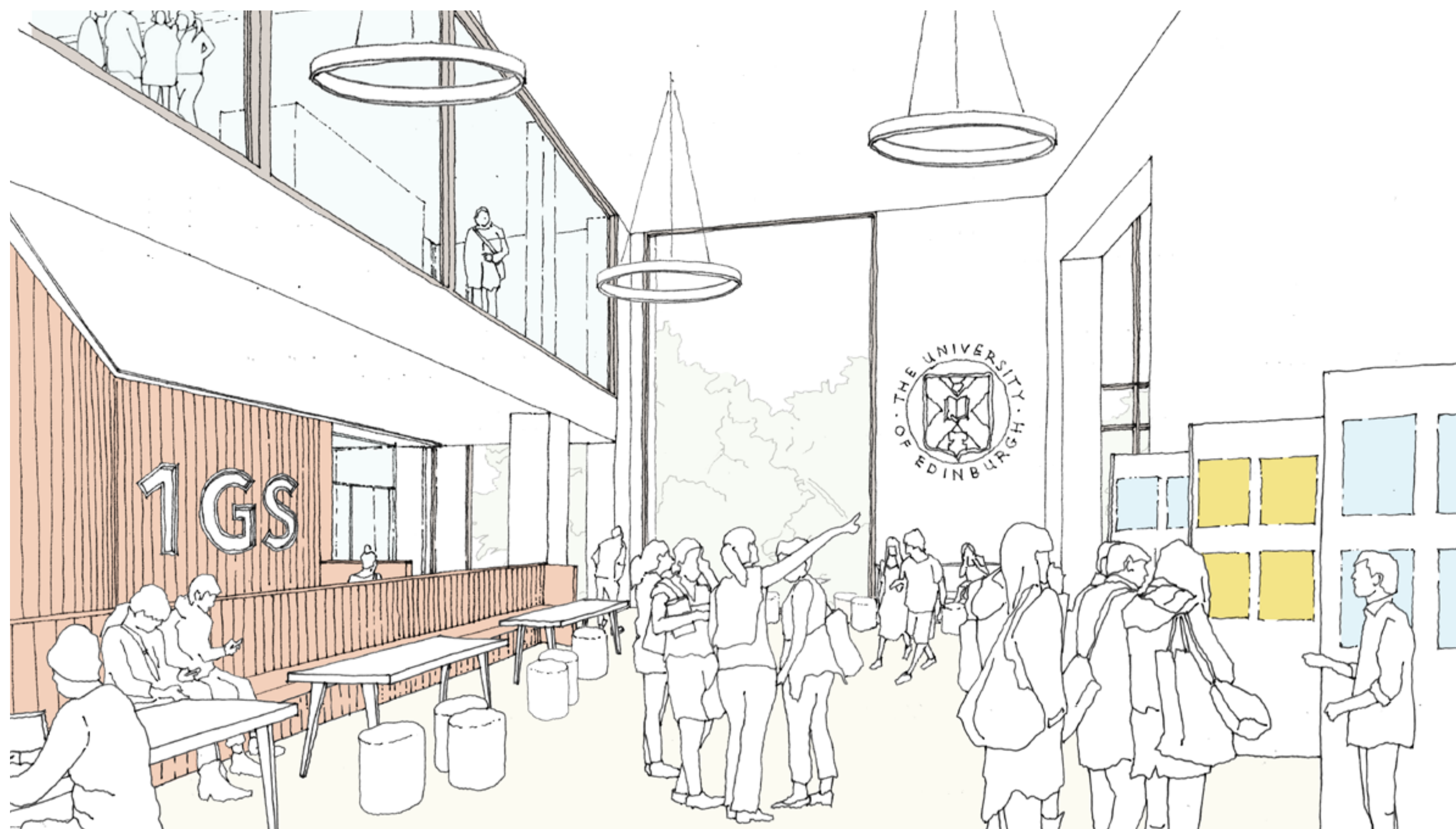


Proposed First Floor Plan



First Floor Isometric





## G) First Floor Atrium

The Student Collaboration Zone at first floor level has views over George Square, and provides a number of areas for work and discussion.



## H) Amphion

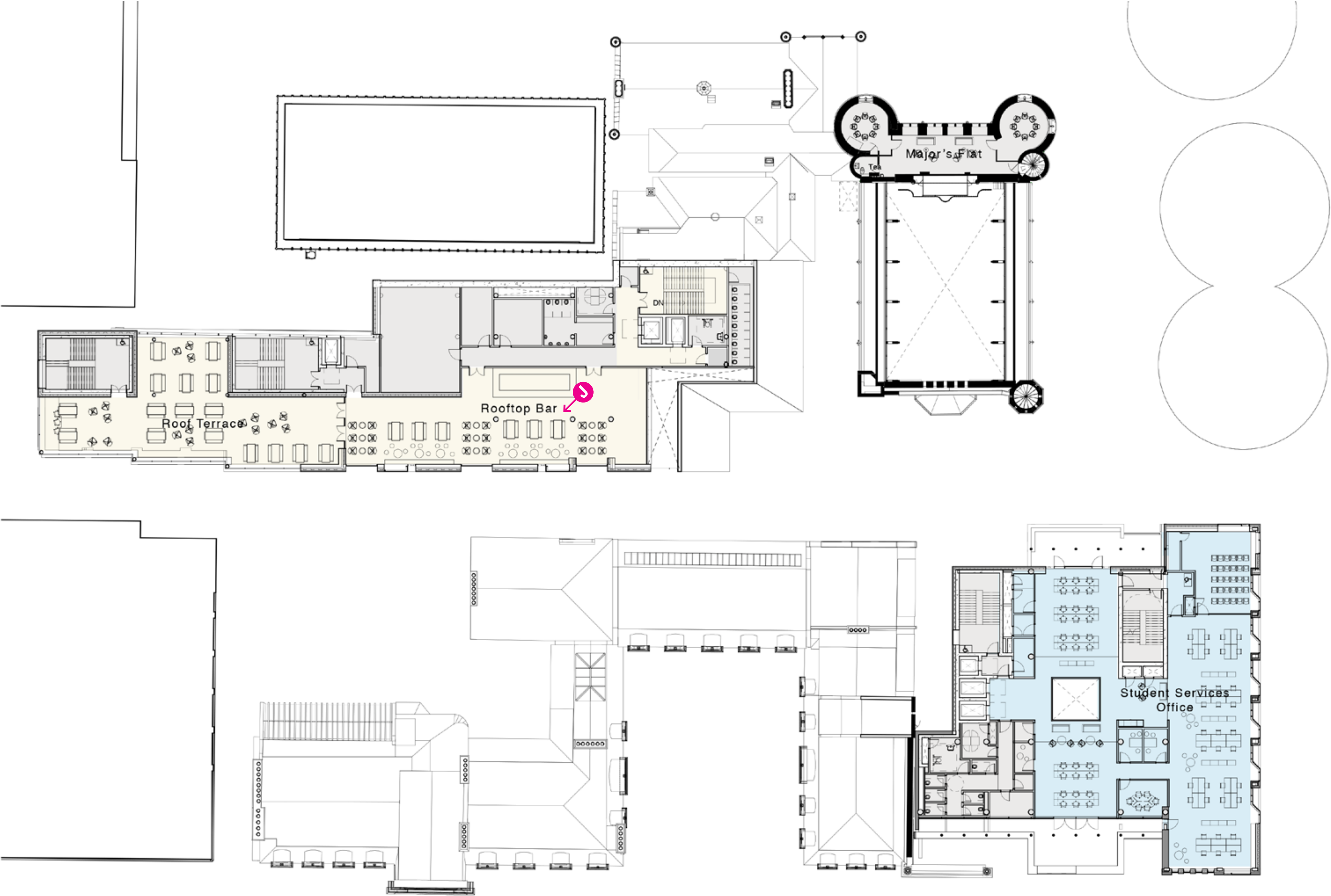
The existing Amphion is transformed into an activity zone, becoming the first floor link between Teviot Row House and No.1 George Square.



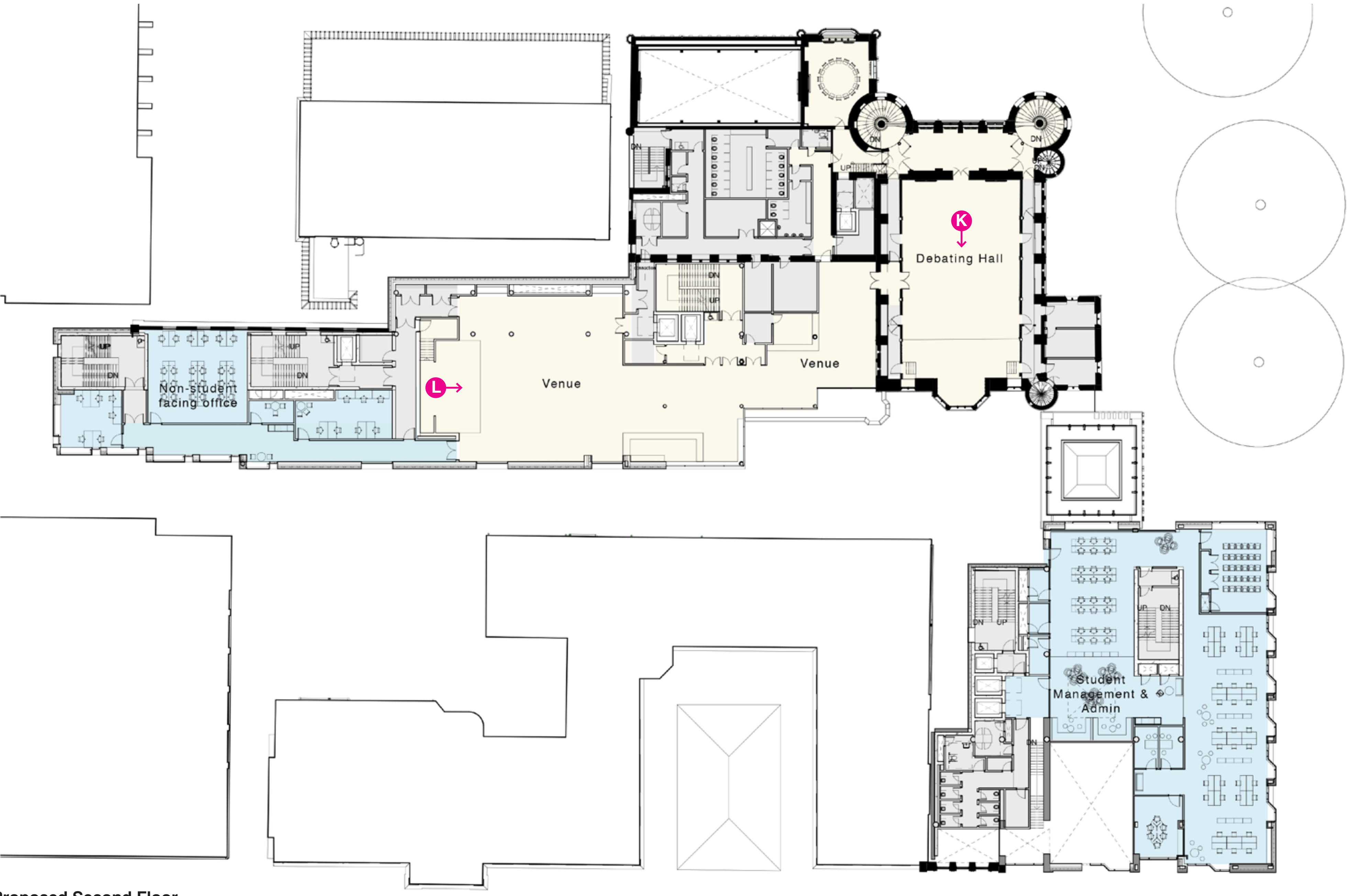
## I) Pavilion Room

The Gatehouse room linking the buildings at first floor has new panoramic views of Charles Street Lane, Teviot Garden, Teviot Row House and 1GS.





Proposed Top Floor



Proposed Second Floor



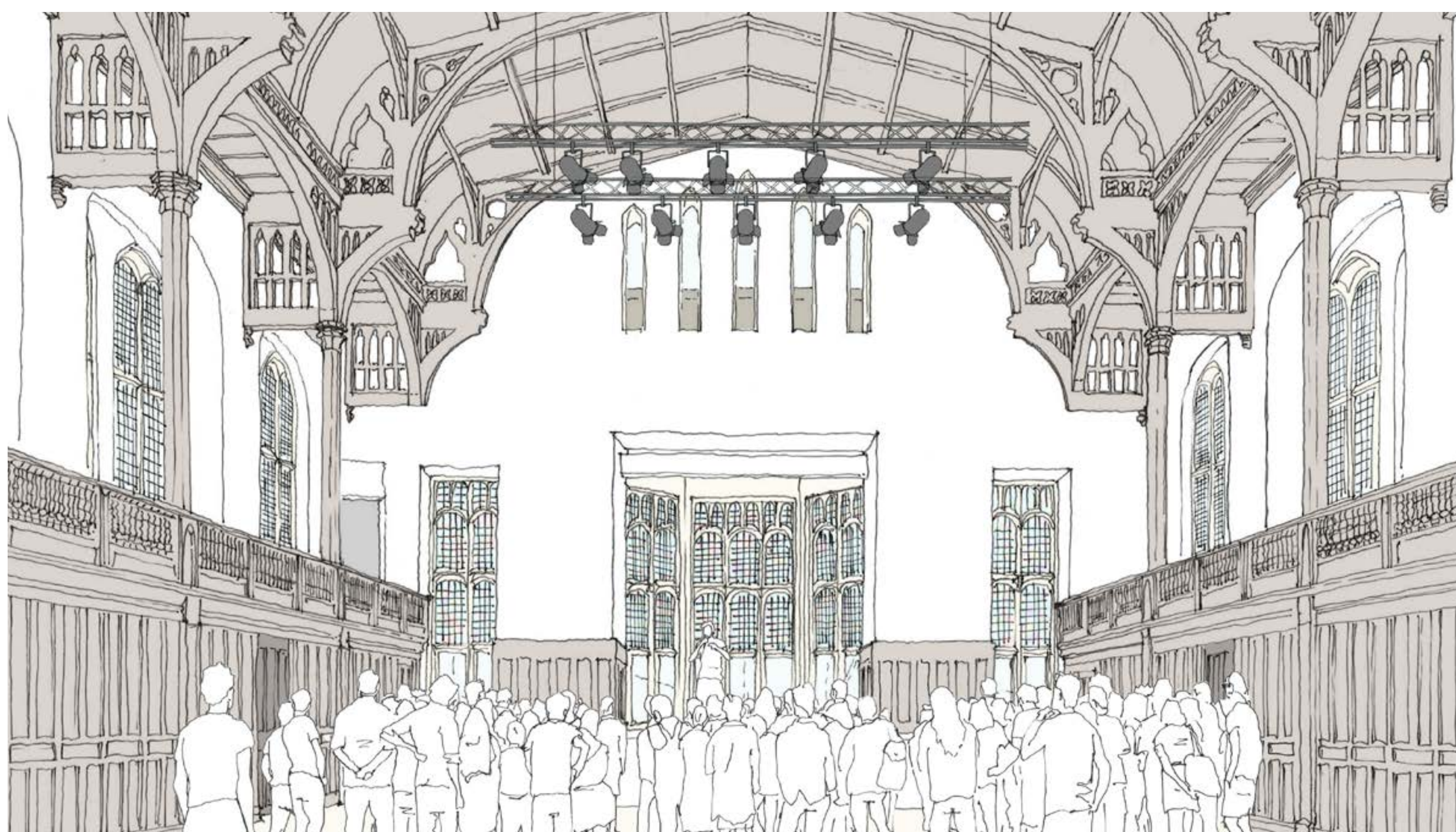
## J) Rooftop Bar

A new rooftop bar is proposed in Teviot, under an attic-style roof structure, and with indoor and outdoor areas.



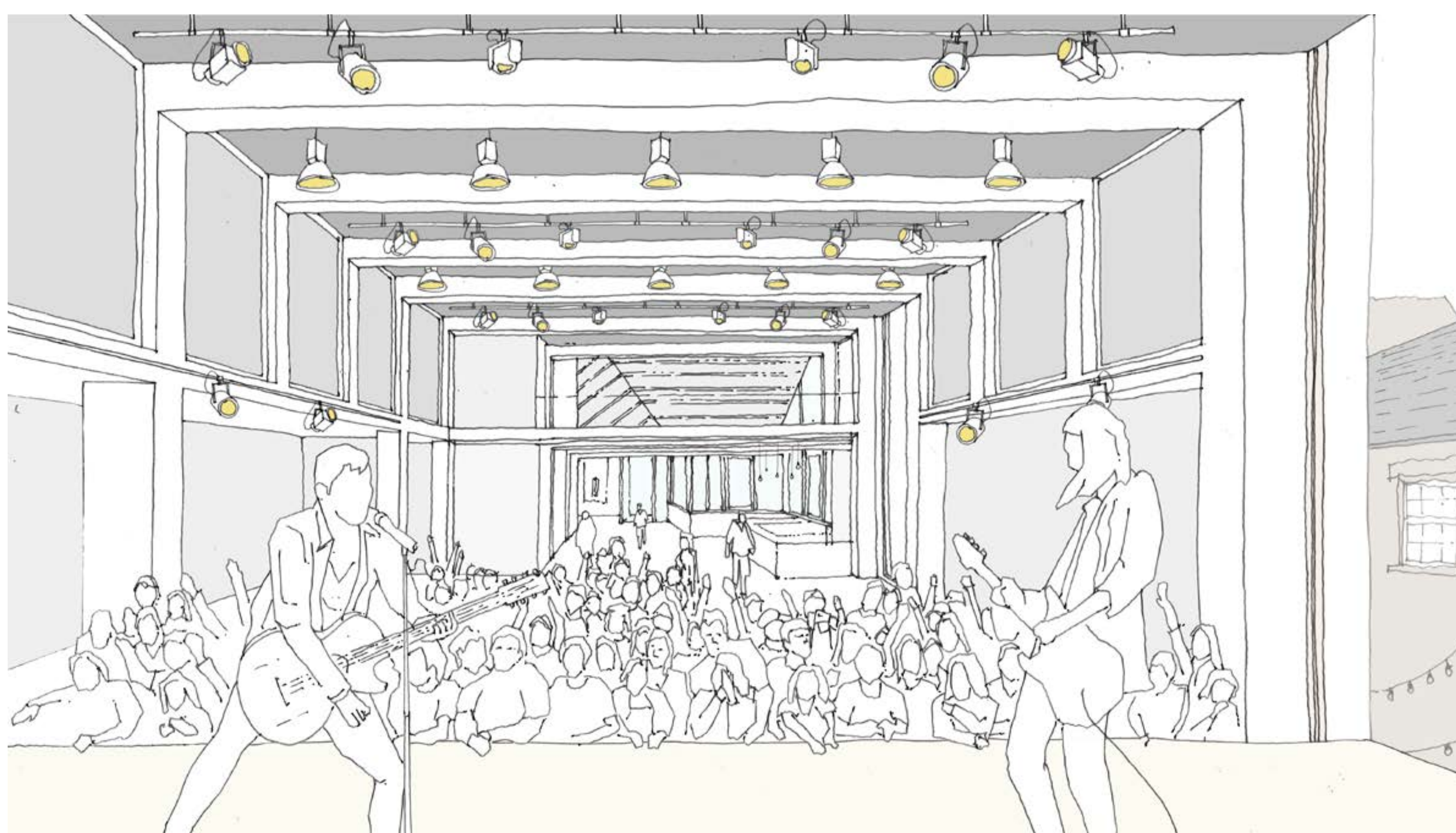
## K) Debating Hall

The historic Teviot Debating Hall will be carefully renovated and modernised, providing new technical facilities but retaining the original charm and character.



## L) Venue

A new large capacity venue and bar is proposed adjacent to the Debating Hall, becoming an attractive destination for music, performance and other events.





The new Student Centre is part of a series of enhancements being made to the Edinburgh experience.

## Teaching

Over the past two years, £3.65 million has been spent upgrading and refurbishing nearly 100 teaching spaces. The first phase of the new Lister Learning & Teaching Centre is now open, Appleton Tower has been transformed, and our lecture recording system Media Hopper Replay is being rolled out across all 400 general teaching spaces over the next three years.



## Library and Study Facilities

The Main Library is now open 24/7 and more than 350 new study spaces have already been created. Relocating student support services out of the Main Library and into this new Student Centre will free up around 300 additional study spaces.



## Wellbeing

An extra £140,000 is being invested in the Student Counselling Service over the next two years, along with improvements across Disability Services. Our Student Mental Health Strategy sets out how we will improve support for students and promote initiatives around health and wellbeing. Improved facilities for the Counselling and Disability Services will be hosted in either the new Student Centre or very nearby.







## Sport

We'll be rolling out a masterplan for Outdoor Sport later this year setting out planned improvements at Peffermill, Firbush Outdoor Centre and a new Rowing Centre in Strathclyde Park.

## Societies

The Pleasance has just reopened after a £6million renovation with improved facilities for University societies and student groups, including a revamped Pleasance Café & Bar, new events spaces and improved disabled access.



## Student Accommodation

We're investing in the range and quality of student accommodation. New residences at O'Shea Hall have scooped UK awards. At the same time, some accommodation prices have been frozen to help make studying at Edinburgh more affordable for all.

## Working together

We're listening to student feedback. Our new Student Partnership Agreement sets out how the University will continue to work with the Students' Association to improve the Edinburgh experience.