



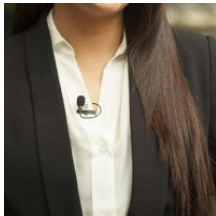
## **Students who are deaf/have a hearing loss: good practice in classroom-based lectures**

- See 'Face Covering Guidance' advice embedded in the 'Making teaching more accessible' section of this webpage <http://edin.ac/2QeihJL>
- Use and position your normal microphone appropriately (and any additional mic you may be asked to use). See [Appendix below](#) for guidance.
- Repeat back questions asked from the floor before answering them.
- Allow the student to position themselves in a particular way (eg because they hear better on one side).
- Always try to face students whilst speaking and stop speaking when writing on white/black board. This can be really difficult until you're used to it.
- Avoid walking around or covering mouth whilst speaking.
- Don't speak with your back to a window or other main source of light.
- Give time to read visual information such as on a Powerpoint slide, as students cannot lipread and read text at the same time.
- Write down important points, such as room/time changes or key information especially at the end of sessions where there is a lot of background noise.
- Be aware that it's particularly difficult to lipread someone with a beard which covers their mouth.



## Microphone Use in Lectures: Good Practice Guide

### Lapel mic good practice



- Ideally the mic should be about 8 inches below the mouth in central position
- Make sure there is no interference from jewellery etc.
- Make sure the mic is not pointing into clothing, because rubbing will also cause interference.

*'Everything hinges on where the mic is placed: an inch or two here or there makes a huge difference.'*  
Specialist technician

### Interactive situations – mics for amplifying contributions 'from the floor'

Please always remember to **repeat back a question**, whether or not an assistive mic is used for questions and comments from the audience. Types of assistive mics include the following examples:

Student may provide a **'Roger Pen' directional mic**, which they will manually point towards the person speaking

<https://www.ihear.co.uk/collections/phonak-roger-microphones/products/phonak-roger-pen>



Student or Student Disability Service may request use of a **'Catchbox'** microphone. See this video on its use:

[https://media.ed.ac.uk/media/1\\_s3lvi3o4](https://media.ed.ac.uk/media/1_s3lvi3o4)

