

# Omicron vs Delta: how severe are symptoms and how effective are the vaccines?



We looked at RT-PCR testing, vaccination, age, sex, health and hospitalisation history

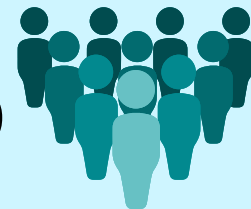
## What we did

Data from  
1 Nov 2021 → 19 Dec 2021

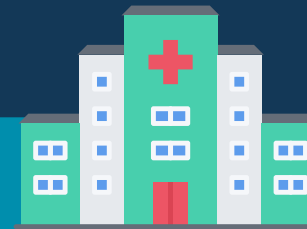


We analysed health care data

99%



of the Scottish population



Only 1.7% admitted to hospital with COVID-19\* had Omicron variant

\*Within 14 days of a positive test

## What we found

10x more likely to be reinfected with Omicron than the Delta variant

Following a booster/3rd dose, the likelihood of symptomatic infection\* dropped by

88%  
Delta

57%  
Omicron

\* People aged 50+

## Conclusion

Omicron causes milder disease than Delta but is also more likely to break through immune protection

Read the paper at: [https://doi.org/10.1016/S1473-3099\(22\)00141-4](https://doi.org/10.1016/S1473-3099(22)00141-4)