

Giving feedback: a Postgraduate Researcher's Guide



'Have Your Say' Online Suggestion Box



When: Ongoing

In brief: Through our anonymous online suggestion box 'Have Your Say', you can tell us how we can make your student experience better, let us know what's working well or how could we improve.

Closing the loop: All suggestions are considered, and regular updates of improvements are made available (see useful link below).

Useful links: <https://edin.ac/31nm9yE>

Student Representation System



When: Ongoing

In brief: The Students' Association trains and supports over 1300 student representatives, from Programme and School Representatives, to the five full-time Sabbatical Officers. All students can share feedback with relevant student representatives, or raise issues directly via the monthly Student Council meetings.

Closing the loop: Issues are raised by student representatives directly with staff or at committee meetings (including Student-Staff Liaison Committee meetings), and representatives work in collaboration with staff to identify solutions. Ongoing issues are shared between representatives in handover documents.

Useful link: <https://edin.ac/2gz69C2>

Internal Periodic Review



When: Minimum six-yearly

In brief: A significant, wide-ranging review is conducted of each programme at least every six years and includes a student panel member. Students are invited to meet the review team, propose aspects for review and provide feedback.

Closing the loop: Outcomes include recommendations and follow-up which are shared online, via Student-Staff Liaison Committees and reported externally.

Useful links: <https://edin.ac/3NBjhyW> <https://edin.ac/2gz59hg>

Student Panel

When: Ongoing

In brief: Students are invited to engage with a range of topics to provided in-depth and specific feedback through questionnaires, focus groups, and interviews. This is an opportunity to shape the student experience for existing and prospective students.

Closing the loop: Feedback and reviews are analysed and actioned by the University and contribute to informing University decisions and actions.

Useful links: <https://edin.ac/2p2J4iZ>



Postgraduate Research Experience Survey (PRES)

When: Every two years

In brief: A national survey for PGR students which runs every two years from March to May. It covers a range of topics including supervision, support, resources, professional development, progress and assessment, research culture, etc.

Closing the loop: The feedback and findings are used to improve programmes and the learning experiences for you and future students.

Useful links: <https://edin.ac/3klmSTy>



Annual Review



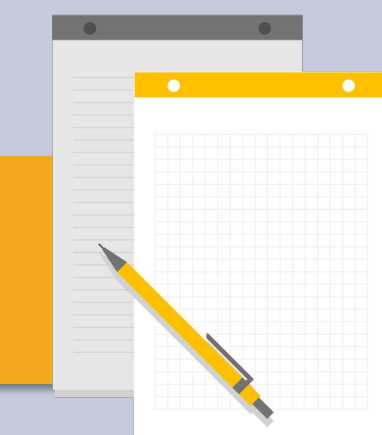
When: Within 9 to 12 months of enrolment (and every additional year)

In brief: A formal record of how the research project is going and recognition of student achievement. Students will complete a progression report on Euclid, participate in a review meeting and may need to submit a written report and/or prepare an oral presentation. Though the annual review is a formal assessment for PGR students, it is also an opportunity to report to reviewers any feedback on supervisory relationship, training needs and professional development.

Closing the loop: The feedback is taken to School Postgraduate Director (or Head of Graduate School).

Useful links: <https://edin.ac/3q1hPSD>

Pulse Survey



When: Twice per year

In brief: A survey asking students to provide feedback on their University experience through 11 core questions. Questions relate to research experience and belonging and experience. There may also be a short additional topic in each survey.

Closing the loop: The feedback is presented to key University committees and senior leadership and used to inform University decision making. Results are made available on Bite Size Insights.

Useful links: <https://edin.ac/3ONUMEA>

Other Useful Links

Student Voice Policy: <https://edin.ac/2MXbzKd>

Student Partnership Agreement: <https://edin.ac/2i1pIDg>

Student Surveys: <https://edin.ac/2i1banf>

Student Engagement: <https://edin.ac/3nwri28>

Academic policies, regulations and guidance for PGR students: <https://edin.ac/3AfPQUR>

Code of Practice for Supervisors and Research Students: <https://edin.ac/3aasK7p>