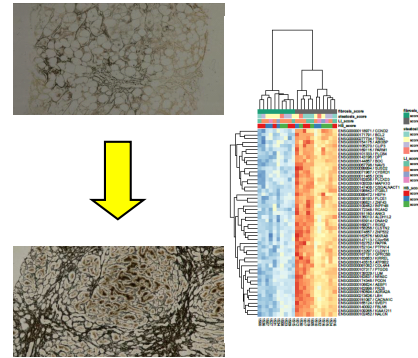


Fallowfield Group

- Translational liver research group with expertise in **disease models** and **drug discovery** in liver fibrosis/NASH
- Conduct **clinical trials** of new therapies (e.g. serelaxin, autologous macrophages) and tests (e.g. MRI, breathomics) in NASH/fibrosis/portal hypertension
- Use **clinical cohorts** (e.g. n=1000 *SteatoSITE* NAFLD Data Commons), bio-informatics, AI/ML for precision medicine
- Interest in disease **prevention** (e.g. coffee; minimum unit pricing of alcohol)
- Broad **Industry** engagement (e.g. GSK DPAC, Innovate UK collaborations; consultancy; scientific advisory boards)
- Strong focus on **public engagement**
- AASLD Portal Hypertension SIG Steering Committee, BAVENO VII Faculty, NICE MedTech Innovation Advisor, NIHR Leeds Diagnostic Evidence Co-operative (MIC)

Developing new tests and treatments for people with chronic liver disease

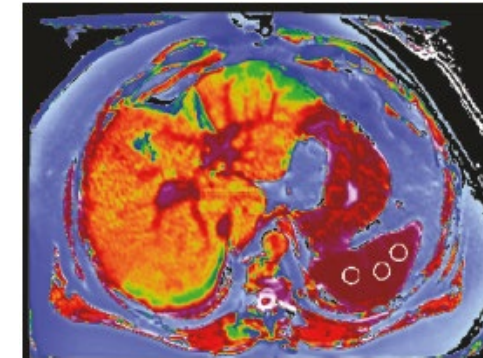
Unmet need = opportunities to impact on mortality



LIVER FIBROSIS PROGRESSION

(e.g. in NASH/high risk patients)

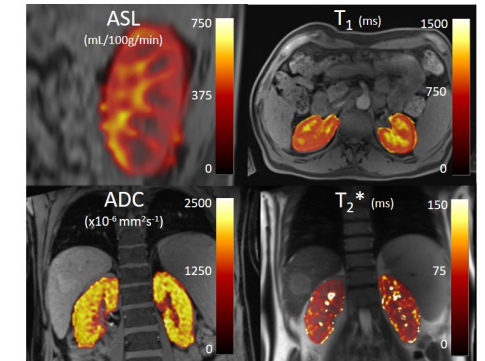
Need non-invasive biomarkers; NO licensed anti-fibrotic or anti-NASH drugs



PORTAL HYPERTENSION

Variceal bleeding occurs in 5-15% cirrhotics/year; Mortality still ~20%

Need non-invasive tests for portal pressure; Beta-blockers effective in only 30-60%; Adverse effects of acute drug therapies



ACUTE KIDNEY INJURY

30-40% of hospitalized cirrhosis patients; Unacceptably high morbidity/mortality

Potentially reversible; Current diagnostic tests inadequate, very limited treatment options