

**MEL Joint Hons**  
(one language and the other subject is not a language [OSNAL])

+ Celtic & MEL

Year Abroad  
assessment plans  
(2020-21)

For students whose original YA activity plan was Erasmus (or equivalent) study PART YEAR + non-Erasmus study/work placement PART YEAR

MA (Hons) in a DELC language and any one of these other components:

Business  
Classics  
English Language  
English Literature  
History  
History of Art  
Linguistics  
Philosophy  
Politics  
Social Policy

Also:

MA (Hons) Celtic and French  
MA (Hons) Celtic and Scandinavian Studies

N.B. 'Erasmus (or equivalent) study' includes **Latin American** exchanges where grade conversions are possible; 'Non-Erasmus study' includes **Russian** exchanges where grade conversion is not possible.

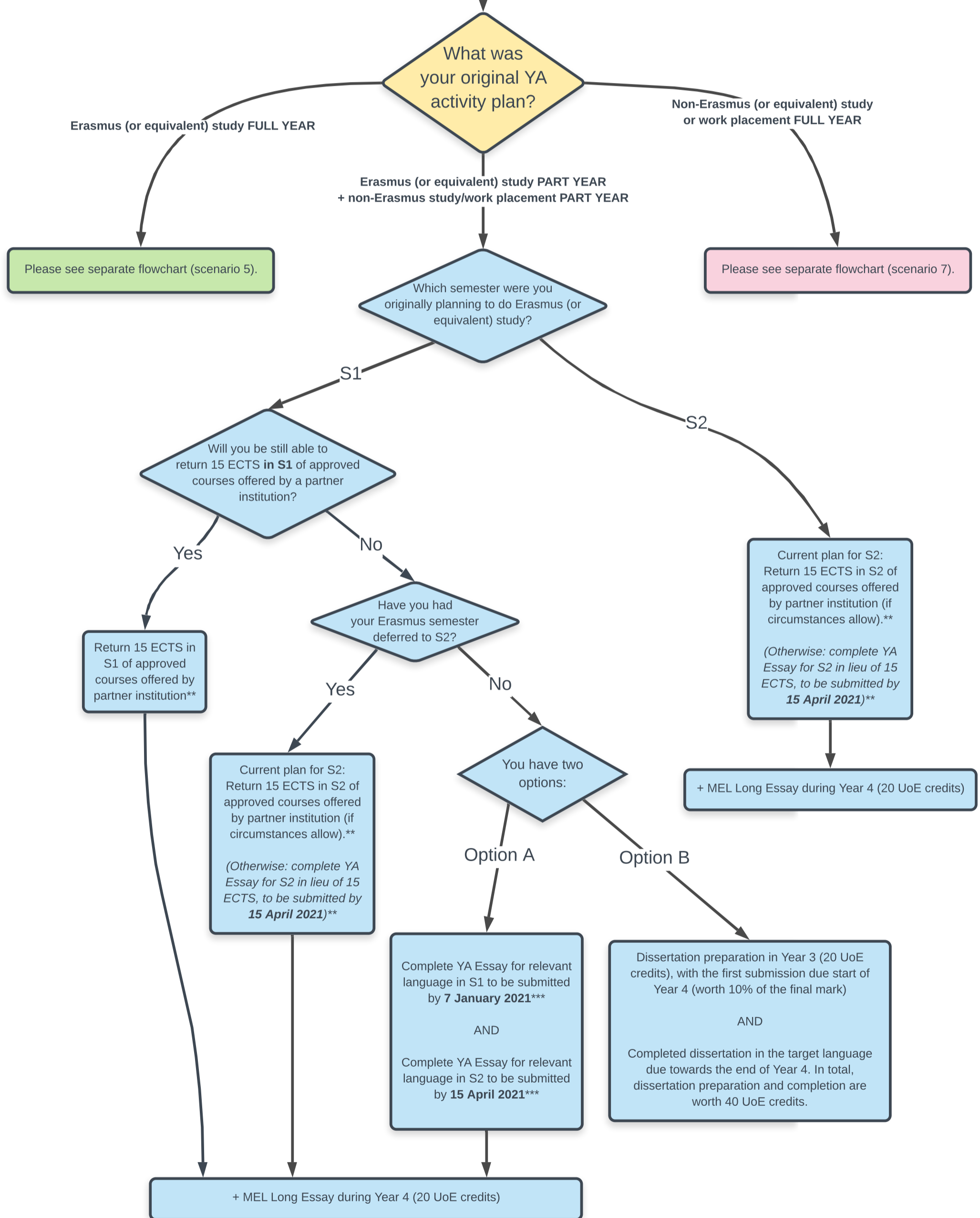
All students will be enrolled on ELCC10004 Language Acquisition through Residence/Study B, which is equivalent to 40 UoE credits, in preparation for LP1 (10 credits), LP2 (10 credits), and Oral (20 credits). These are assessed in Year 4.

+ ALL students will complete work for their **partner subject** (see separately for information).

+ ALL students will complete the **compulsory** Year Abroad Online Language Learning Course in the relevant language (20 UoE credits). This spans the full academic year.

+ ALL students will have access to the extra **Guided Language Study** (GLS) activities and materials available for your language (at least in S1). These activities and materials will not be assessed and are non-credit-bearing; they are there to support you with your language acquisition during this disrupted semester. Please note GLS is a **flexible** offer to allow you to do as much as you can fit in around other activities.

**REMEMBER... CHECK YOUR DEGREE PROGRAMME TABLE AND LIAISE WITH YOUR PARTNER SUBJECT; IN SOME EXCEPTIONAL CASES THERE IS AN OPTION FOR A DEVIATION IN THE BELOW** (particularly in MEL & Classics, MEL & English Language, and MEL & Linguistics, where you *may* have an option to write a dissertation for your partner subject in place of certain components below).



\*\* For students in these categories, the grades for the best 15 ECTS from the semester in question will be converted and will be worth 20 UoE credits (for the course 'MEL Year Abroad Assessment').  
  
If you submit a YA Essay in lieu of 15 ECTS (for S2) it will be worth 20 UoE credits (for the course 'MEL Year Abroad Assessment').

\*\*\* For students in this category, the highest of the marks for your two YA Essays will be your mark for the course 'MEL Year Abroad Assessment' (worth 20 UoE credits).