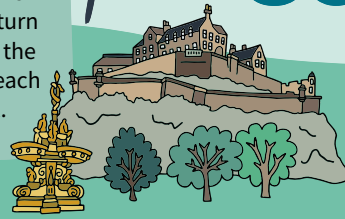


Central Campus Tour Map

Edinburgh Castle

From Bristo Square, cross over onto Bristo Place and walk past Greyfriars Bobby, along George IV Bridge and turn left onto Lawnmarket. Continue up the Royal Mile and Castlehill until you reach the Castle. Approx. 20 mins walk.



Edinburgh College of Art

From Bristo Square, walk along Teviot Place and Lauriston Place until you reach ECA on your right. Approx. 15 mins walk.



Easter Bush

From Bristo Square, walk past Old College and take a left onto South Bridge. Keep walking over North Bridge and take a left at the end onto Princes Street. Approx. 15 mins walk. From Princes Street take the Lothian bus service 15 direct to Easter Bush Campus. Approx. 35 mins bus ride.

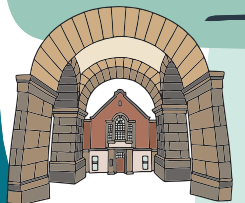
Waverley Train Station

From Bristo Square, walk past Old College and take a left onto South Bridge. Keep walking over North Bridge and take a left at the end onto Princes Street. Access down to Waverley Station will be on your left. Approx. 15 mins walk.



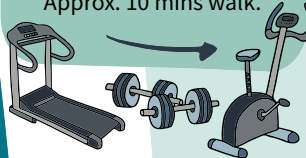
Holyrood Campus

From Bristo Square, walk past Old College, cross over onto Drummond Street and take a left at the bottom onto Pleasance. At the traffic lights, turn right onto Holyrood Road and keep walking until you reach Holyrood Campus. Approx. 15 mins walk.



Pleasance Gym

From Old College, cross over Nicolson Street / South Bridge and walk down Drummond Street. Cross over Pleasance at the traffic lights to reach the Sports Centre. Approx. 10 mins walk.



Pollock Halls

From George Square, take a walk onto Buccleuch Place and choose any of the side streets to head through to South Clerk Street. Follow the road down until you take a left onto East Preston Street. At the end of the road, take a right and then the first left onto Holyrood Park Road. The entrance to Pollock Halls will be on your right. Approx. 30 mins walk.



Kings Buildings

From George Square Gardens, walk through Crichton Street, take a right and continue straight on Buccleuch Street, past Summerhall and onto Mayfield Road. Continue walking on Mayfield road for approximately 0.7 miles until you reach the King's Buildings Campus. Approx. 30 mins walk.



Central Campus Tour Map

Chambers Street

South College Street

Lothian Street

Bristo Square

George Square

Buccleuch Place

North Meadow Walk

Lauriston Place

Teviot Place

Forrest Road

Bristo Place

Pottarow

Nicolson Street

Buccleuch Street

Middle Meadow Walk

North Meadow Walk

George IV Bridge

6

7

8

9

10

11

12

15

4

5

3

2

1

14

16

13



THE UNIVERSITY of EDINBURGH

Central Campus Tour Map

1

Informatics Forum, Dugald Stewart Building and the Visitor Centre Charles Street - EH8 9AD

Designed by Bennetts Associates, the Informatics Forum has won numerous awards for its environmentally sustainable design and is used purely for research. The Dugald Stewart Building, which houses the **School of Philosophy, Psychology and Language Sciences** provides a state-of-the-art centre for innovation and interaction, cutting edge technology and flexible teaching space. Nestled directly in between the two is our **Visitor Centre** where you can find information about the University as well as fabulous souvenirs.

2

Old College South Bridge - EH8 9YL

Old College is the University's oldest existing site, and is home to the impressive Playfair Library, the **Law School** and Talbot Rice Gallery. Construction started in 1789 and many famous architects have had a hand in creating what you see today, including Robert Adam, William Playfair and latterly, Sir Robert Rowan Anderson. The quad is a fantastic place for pictures to be taken for your mementos. At the far end of the quad stands a poignant memorial to students and staff who made the ultimate sacrifice during both World Wars.

3

Potterrow North East corner of Bristo Square - EH8 9BL

On the North East corner of Bristo Square is Potterrow, another of the four **Students' Association** buildings and a lively and popular place to meet friends. Facilities here include a shop, a café, a bar and the Chaplaincy Centre, which offers support for students of all faiths and none. Potterrow is also home to The Venue which hosts numerous themed nights throughout the year including gigs, ceilidhs, and a student club night called Big Cheese. Next to Potterrow is the Richard Verney Health Centre which offers a variety of different support services to our students.

4

Teviot Row House South of Bristo Square - EH8 9AJ

Teviot Row House, the oldest purpose built Students' Union in the world, opened in 1889. The building is now run by Edinburgh University Students' Association, and boasts five bars, a debating chamber, dining room, café and several meeting rooms. Often referred to as 'Hogwarts' by tourists. This building will close for refurbishment in 2023 to modernise some of the facilities.

5

McEwan Hall West of Bristo Square - EH8 9AG

The large circular building on the west of Bristo Square is McEwan Hall, financed by Sir William McEwan, MP for Central Edinburgh and founder of the famous city brewery. Once Edinburgh's premier concert venue, McEwan Hall has recently been redeveloped and normally hosts graduation ceremonies, exams, Open Days and other special events. Designed by Sir Robert Rowan Anderson, and completed in 1897, the interior was designed by William Palin with the images decorating the ceiling representing the various subjects offered by the University.

6

Bedlam Theatre Between Forrest Road and Bristo place - EH1 1EZ

The former North Free Church was designed by architect Thomas Hamilton and built in 1846. In 1941 the church closed and the building is now home to the University of Edinburgh Theatre Company, showing over 40 productions every year. The theatre is entirely run by students and our Students' Association. The name Bedlam is attributed to the building's proximity to Edinburgh's first mental health hospital.

7

Old Medical Quad Teviot Place - EH8 9AG

Originally part of the Medical School completed in 1886 this Grade A listed building has been refurbished to unite the **School of History, Classics and Archaeology** under one roof. You can find the Anatomy Lecture Theatre here, in the School of **Biomedical Sciences**, which is still used for 1st and 2nd year **Medicine** lectures. There is also the Anatomy Museum and **Nursing** is taught in this building. Today's state-of-the-art teaching and research facilities for the School of Medicine are located at the Royal Infirmary, Bioquarter.

8

Chrystal Macmillan Building North West corner of George Square - EH8 9LD

Home of the **School of Social and Political Science** and named after Chrystal Macmillan (1872- 1937) who was among the first women to graduate from the University and was the first female science graduate.

9

Hugh Robson Building North of George Square Gardens - EH8 9XD

Built in 1978 and named after the then University Principal, today this building is used for **Biomedical Science** teaching, whilst large computer labs house over 200 computers. Opposite this building is the main entrance to George Square Gardens. Over summer the gardens are a well-known festival venue with vibrant open-air café-bars and a range of performances.

10

Main Library South West corner of George Square - EH8 9LJ

One of the largest academic libraries in the world, the Main Library provides access to over 1.8 million printed volumes and over 18 million electronic resources. Founded in 1580, the library moved to George Square in 1967, and has recently undergone a £60 million refurbishment. Facilities include group study pods, computer suites, café and our Ucreate studios.

11

Gordan Aikman Lecture Theatre South of George Square - EH8 9LK

The Universities largest lecture theatre, built in 1967 is used for teaching a variety of subjects. This venue is also used, along with a number of our facilities, in Edinburgh's Fringe Festival, the world's largest arts festival.

12

Business School South East corner, George Square - EH8 9JS

With the Glass box on your left hand side, the Business School should be directly in front of you. The building houses excellent teaching in **Business and Accounting**.

13

40 George Square South east corner, George Square - EH8 9JX

Entrance via the glass box, our recently refurbished basement level boasts a fantastic café, seminar rooms and small study space, 40 George Square also has 3 large lecture theatres where many 1st and 2nd year classes take place.

14

50 George Square East side of George Square - EH8 9JU

50 George Square, opened in 2014, is the home to our **School of Literatures, Languages and Cultures**. Inside here we have lecture theatres, seminar rooms, a project room and a screening room which is sometimes used by film societies at the University.

15

7 George Square North East Corner of George Square - EH8 9JZ

Built in 1876, this was once George Watson's Ladies' College and was purchased by the University in 1973. Today the building is home to **Psychology**. Outside you will see the plaques for Robert Louis Stevenson: alumnus of the University, poet, and author; and Julius Kambarage Nyerere: graduate of the University, African statesman, and the first President of Tanzania.

16

Appleton Tower Crichton Street - EH8 9LE

Originally completed in 1966, and recently developed, this building was named after scientist Sir Edward Appleton. It houses a café, large lecture theatres, specialist computer labs and social spaces. Many different subjects will use this building for teaching.



For more information - Download our audio guide

For more information about our campus scan this QR code and download our audio guide for free from the app store. Please also pick up a free UG/PG guide for more information about Accommodation, Fees, Funding and Applications from the Visitor Centre & Gift Shop, 2 Charles Street. Opening times Monday - Saturday 10:00 - 17:00.

Admissions opening times

College of Arts, Humanities & Social Sciences @57 George Square: 10:00-16:00, Mon-Fri / Tel: +44 (0)131 650 3565 & Postgrad: +44 (0)131 6504086
College of Science and Engineering @Murchison House, King's Buildings campus: 10:00-16:00, Mon-Fri / Tel: +44 (0)131 6505737
College of Medicine and Veterinary Medicine @Chancellors Building, Edinburgh Bioquarter: 10:00-16:00, Mon-Fri / Tel: +44 (0)131 2426792