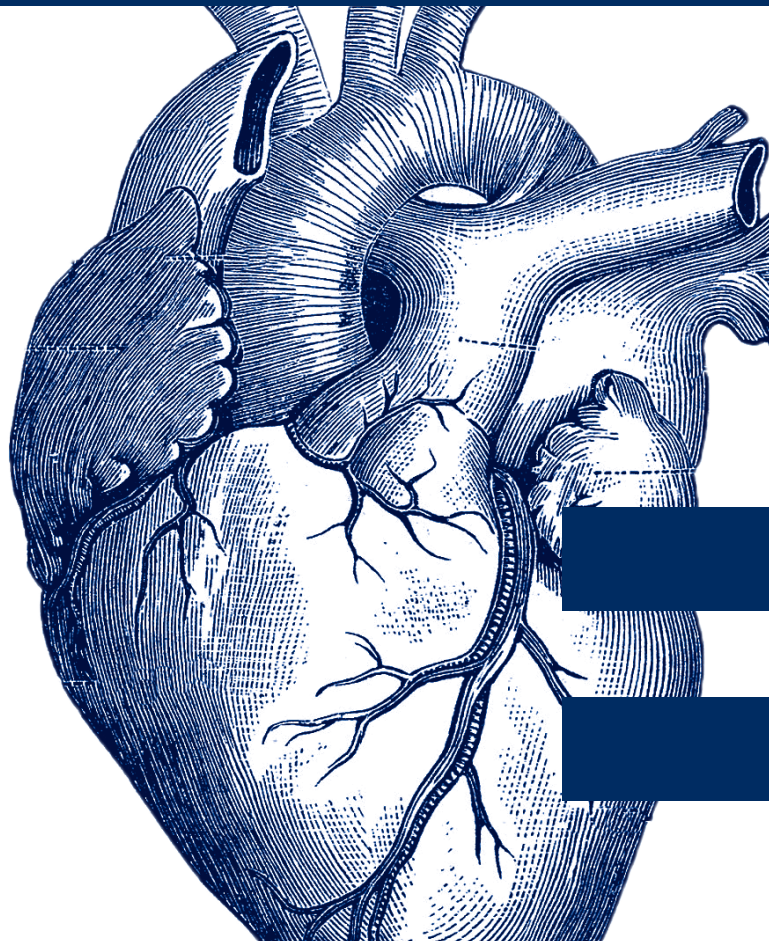




THE UNIVERSITY of EDINBURGH
Edinburgh Medical School

Medicine

Undergraduate opportunities 2024



www.ed.ac.uk/medicine

EDINBURGH
extraordinary futures await



Studying Medicine at Edinburgh

Our six year Bachelor of Medicine and Surgery (MBChB) degree will equip you with the knowledge, understanding and skills required to become a Foundation Year 1 doctor.

Medicine at Edinburgh offers a modern, innovative curriculum designed to prepare you for contemporary medical practice.

Our aim is for you to graduate as a competent, ethical and reflective doctor, with the care of patients as your first concern.

You will graduate as an excellent communicator and team player, prepared for complex and uncertain situations, equipped for ongoing personal development, and trained for high professional achievement and leadership.

As such, you will have a deep understanding of medical research and evidence-based medicine, which will be useful whatever career path you follow.

You will be especially well-equipped to pursue an academic career in medicine, where ongoing practical involvement in research, as a physician-scientist, is paramount.

 **Outcome of the course**





Course structure

Our curriculum is ambitious, with an ethos of respect and support for our students, and a programme which is responsive to feedback from students and staff. We work with the General Medical Council to ensure we meet professional standards.

Clinical elements are included from day one, and from Year 4 teaching is mainly clinically-based.

As the programme progresses, assessment is closely linked to clinical practice, and you are given formative feedback on your performance during each year to develop and extend your understanding.

You will undertake a series of modules across year-long courses which are based on biomedical knowledge integrated with the body systems, patient presentations and diseases.

Years 1 and 2

In years 1 and 2, you will look at biomedicine and sociology from a patient's perspective, undertaking 'Research and evidence-based medicine', 'Knowledge to clinical practice', 'Socio-ethical aspects of medicine' and 'Professional skills', and also a range of biomedical modules each semester. In Year 2, you will also continue to develop your practical, research and clinical skills, including history-taking and examination.

You will learn practical clinical skills such as resuscitation and interviewing patients, and develop your clinical reasoning and decision-making skills.



Teaching methods include lectures, tutorials, workshops and group work, community projects, GP-based teaching and student-selected components or projects on a range of topics, from the clinical to the non-medical.

Year 3

In Year 3, you'll take on a whole new challenge, beginning an academic year of full-time, research-based study, leading to a Bachelor of Medical Sciences Honours degree. This means by the time you graduate, you will have both a MBChB and your research-based BMedSci (Hons) degree.

The programmes on offer include biochemistry, neuroscience, pharmacology, psychology, sports science medicine, zoology and many more.

Years 4, 5 and 6

In Year 4, you will study all aspects of clinical medicine and healthcare. You will also develop your practical experience through placements in hospitals and general practice.



In Year 5, you will be integrated into teams on hospital wards and community practice. In addition, you will complete a group research project in partnership with a clinical tutor.

In your final Year 6, you will apply your learning from previous years, with an emphasis on developing practical skills and knowledge of senior general and acute medicine and surgery. During your Assistantship you will have the opportunity to assist a junior doctor and, under supervision, undertake some of the duties of a Foundation Year 1 doctor.

Electives

After your final exams, you will also have an 'elective' period, where you will have the opportunity to gain further experience of a speciality you are considering for your future career or clinical research.



Teaching

Support

The medicine degree programme has a Student Support team who can offer help and advice. You will have a named Student Advisor from the Student Support team who you can contact for support throughout your medical school journey.

Clinical Tutor Associates, who are doctors completing their speciality training, also offer teaching support tailored to your educational needs during the clinical years: 4, 5 and 6.

Teaching methods

You will be taught through in-person lectures, tutorials, problem-based learning, laboratory work, project work, clinical placements and peer-learning projects.

The student-selected components in Years 1, 2 and 5 offer flexibility and choice throughout the curriculum.

Assessment

Assessment methods include in-course assessments, clinical examinations, knowledge tests covering the whole year curriculum, group projects and professional skills.

Facilities

Edinburgh Medical School is located in the Chancellor's Building, Edinburgh Bioquarter, which is beside the Royal Infirmary Edinburgh hospital. The building offers lecture theatres, seminar rooms, a clinical skills centre, library and computing facilities.



The Medical Education Centre at Western General Hospital also has a clinical skills training area, library and computer rooms.

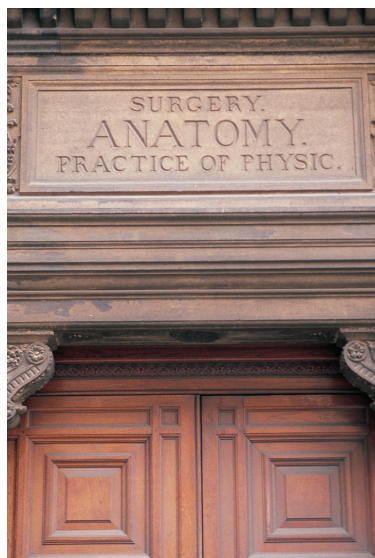
In Year 1 and 2, you are mainly taught at the University main campus in George Square and at the Old Medical School, Teviot Place.

In Year 3, your intercalated programme could be based on any of the University campuses depending on your choice of subject.

In Years 4, 5 and 6, clinical teaching also takes place in three teaching hospitals in Edinburgh, in community GP practices, and in hospitals across other areas of Scotland.

Why choose Medicine at Edinburgh?

- Edinburgh Medical School is one of the most prestigious schools of its kind in Scotland and has been influencing the world of medicine for centuries.
- Our Medical degree (MBChB) spans six years, including an academic year of full-time, research-based study in Year 3.
- Our international reputation in research is first-class. The University of Edinburgh is fourth in the UK based on the quality and breadth of its research – known as research power – and is Scotland's top ranked institution, according to Times Higher Education's Research Excellence Framework 2021 power ratings.
- We place a strong emphasis on interdisciplinary working. Our larger College has five major research institutes, each with more than 500 staff and postgraduates. Each institute is home to inter-related centres, led by internationally-renowned scientists.
- Edinburgh is a picturesque, historic place to study, which is consistently voted one of the most beautiful cities in the world.
- Edinburgh Medical School has a global student community, with people from all over the world coming to study with us.



How to apply

Applications must be submitted through the Universities and Colleges Admissions Service (UCAS).

Applications can be submitted from 5 September to 16 October for the following September's intake. We cannot consider applications after this deadline.

You need to meet our standard academic entry requirements and have also sat the University Clinical Aptitude Test (UCAT) – see page 15.

Your academic grades (achieved and predicted) and your UCAT total will be scored, with separate scoring of the situational judgement test.

The top scoring applicants will be invited to attend an Assessment Day. Following Assessment Days, decisions will be made by the Admissions executive, and you will be informed of the outcome by the end of March.

Applications for deferred entry (for no more than one year) will only be considered for applicants undertaking compulsory National Service.

If you are currently undertaking a qualification which is not yet completed, we require predicted grades in order to consider your application. Find out more here:

 **Edinburgh Medical School - predicted grades**

Those who have experienced extreme extenuating circumstances should ask their academic referee to evidence this within the academic reference or provide this information to the Admissions Team separately at the time of application.



Useful contacts

Admissions Team

+44 (0) 131 242 6792

Email: futurestudents@ed.ac.uk

 **Undergraduate admissions contacts**

Disability and Learning Support Service

+44 (0) 131 650 6828

Email: disability.service@ed.ac.uk

 **Student disability service**

UCAS

UK: 0371 468 0468

Outside UK: +44 330 3330230

Email: enquiries@ucas.ac.uk

 **UCAS**

UCAT

+44 (0)161 855 7409

 **UCAT**

Widening Participation

+44 (0)131 651 1755

Email: wpteam@ed.ac.uk

Academic requirements

In order to be considered for a place, you firstly need to check whether you meet our standard academic requirements, which we outline below for SQA, GCE, UK degrees and IB qualifications, with links to the website for other qualifications.

All examination grades must be achieved in the first attempt (no resits permitted whatsoever). You will not be eligible if you have just started or are midway through a degree in the academic year in which you apply. All recent relevant and updated academic study must have been completed within three academic years prior to the beginning of the programme.

SQA

Qualification	Breakdown
National 5s	B grades or above in Chemistry, Biology, English and Mathematics/Applications of Mathematics. Best 6 grades are scored including required subjects.
Highers	AAAAA by end of S5, to include Chemistry and two of Biology/Human Biology, Mathematics/Applications of Mathematics or Physics (only one of Biology or Human Biology; and one from Mathematics or Applications of Mathematics will be considered). Best 5 Highers are scored including three required subjects. *
Advanced Highers in S6	2 Advanced Highers at grades BB (no specific subject requirements). Offers are conditional on S6 performance.

** For some applicants, this combination at S5 Higher is neither possible nor appropriate. Students who meet the grade requirements in S5 but are missing one or more of the required subjects may take the missing Higher subject(s) in S6, along with the required Advanced Highers.*

GCE

Qualification	Breakdown
GCSEs	7/A or above in Chemistry, Biology, English and Mathematics. * Best 8 grades are scored, including required subjects.
GCE A levels (in one set of exams)	A*AA with Chemistry at A* and one subject from Biology/Human Biology, Mathematics and Physics at A. Only one of Mathematics or Further Mathematics and one of Biology or Human Biology will be considered. Best 3 A levels are scored including the two required subjects.

** Double Award combined sciences or equivalent at Grade AA / 77 may replace GCSE grades in sciences. Additional Applied Science and Applied Science will not be accepted.*

For a list of approved subjects, see:

 **Scottish qualifications - approved subjects**

 **A levels - approved subjects**



International Baccalaureate

Qualification	Breakdown
IB	<p>Overall score of 40 points (including TOK and EE) including 766 at HL with Chemistry at 7 and at least one other science subject, and 666 at SL. Biology should be taken to at least SL.</p> <p>English/English Language (A or B) and Mathematics (either Analysis & Approaches or Applications & Interpretation) must be taken to at least SL grade 6 if taking these within the IB.</p> <p>If English/English Language and/or Mathematics do not form part of your IB Diploma, you must also provide evidence of having completed these subjects to GCSE grade A or equivalent.</p>

Widening access offers

If you have experienced certain barriers that might make it more challenging for you to achieve our standard entry requirements, then we want to take this into account.

We give extra consideration to those eligible for a widening access offer, as well as considering some widening access applications based on our minimum – as opposed to our standard – academic entry requirements. More details can be found here:

 **Widening access**

The University's Widening Access offer policy – and an explanation of eligibility – can be found here:

 **Widening access offers**

Graduate applicants

Qualification	Breakdown
Medical related degree (eg Biomedical Sciences;/Medical Science/Nursing/Paramedical Science)	UK 1st class or 2:1 Honours degree or its international equivalent.
Other science-based degree	UK 1st class or 2:1 Honours degree or its international equivalent in a Biology; Chemistry; Mathematics or Physics based subject.
Non-science based degree plus school leaving qualifications	We also consider other subjects at same degree level as above but must be supplemented with SQA Higher/GCE A Level in Chemistry at grade B; HL Chemistry at grade 5 within the IB; or accepted international equivalents.

Please note: Graduates applying for our undergraduate medicine degree do not qualify for any additional consideration under our widening access offer policy unless they are care experienced or are an asylum seeker/refugee.

In addition, we are not able to consider transfer into our MBChB programme, nor can we consider those who previously commenced their studies in medicine elsewhere, then subsequently terminated their studies. For more information, visit:

 [Graduate and mature applicants](#)

Mature non-graduate applicants

Applicants over the age of 21 years will be assessed on their school leaver qualifications, with the same standard entry requirements as for school leavers. They will be required to provide evidence of updated science knowledge.

We do accept some Access courses which you will find details of here:

 [Access courses](#)

Please contact the Admissions Team for any other queries.

International applicants



International applicants are assessed in the same way as all other applicants. If shortlisted for interview, they will be invited to attend an Assessment Day session (likely to be virtual).

Successful applicants are usually required to pay a deposit of a third of a year's fees in order to reserve their place.

Applicants requesting a refund for any reason within 14 calendar days after the payment date will be refunded in full. Refund requests received more than 14 days from the payment date will only be considered if the applicant fails to meet the conditions of offer.

Please check our Student Administration website for further guidance on visas:

 **Student Immigration Service**

Frequently asked questions

I am currently doing military service in my country and am not expected to finish until after the course starts. Can I still apply and just enrol late?

No. You need to have finished any military service before the start of the course (preferably before September). You can apply for deferred entry for one year only in this scenario.

If I have a reference or document in a language other than English, will it need translating?

Yes, these documents must be certified by a professional translator.

Will it make any difference if I have already studied in the UK?

There may be implications on how much time you have left available to you to study in the UK and the level of study you can undertake. For further details, visit:

 **Student visas - Gov.uk**

Will I need an English Language qualification?

Yes. All applicants, even those from the UK, require a recognised English language qualification. However, the list of eligible qualifications becomes more restricted if you require a visa. For more information, visit:

 **English language entry requirements**

The qualifications I am taking are not listed in this booklet or on the degree finder – where will I find information on my country's requirements?

You will find each country's requirements at this link under the Medicine heading:

 **Entry requirements by region**

Your personal statement

Your personal statement provides you with an opportunity to tell us all about you!

While it will not be formally assessed, your personal statement will be essential preparation for you if you are successful in being invited to one of our Assessment Days. We advise you to consider the following factors when writing your statement:

Personal qualities and skills

Examples may include empathy, interpersonal relationships and the ability to communicate.

Evidence of career exploration

Evidence of a clear understanding of the realities of a career in medicine is sought. Examples include:

- work experience/shadowing with health professionals or in health promotion, for example, working in a nursing home and/or volunteering with disabled people
- talking with doctors and medical students
- attending a university open day and medical conferences/lectures
- reading/ watching/listening to medical-themed literature/digital content/articles.

We value quality of experience over quantity. We are looking for clear evidence of reflection on these experiences, showing us what personal lessons you took from them and using these to demonstrate an aptitude for medicine.

We understand that due to the Covid-19 pandemic, gaining experience will be extremely difficult.

The Medical Schools Council have provided guidance on how to gain relevant experience during the pandemic, while the Royal College of General Practitioners (RCGP) have a free interactive video platform providing insights into the role of a GP and the wider primary care team:

 **MSC guidance**

 **RCGP - Observe GP**

Non-academic achievements and interests

Medicine is a demanding subject and can prove stressful. It is important to maintain a healthy study/life balance and we look for evidence of outside interests.

Examples of these can include:

- involvement in community groups
- extracurricular school responsibilities
- leadership positions
- cultural, sporting, vocational and voluntary achievements
- interests and hobbies.

University Clinical Aptitude Test (UCAT)

The UCAT was introduced in 2006 as part of the selection process for the majority of the UK university medical and dentistry schools.

If you want to study Medicine, you must take the UCAT before applying through UCAS. For example, if you are applying in September then you must take the test between July and September. There are test centres across the world listed on the UCAT website. Without a UCAT score or exemption, your application will not be considered.

If you reapply to Edinburgh the following year, you must resit the test. Please do not send your test results to us as we are advised of your score in November.

In order to ensure your results reach us directly from UCAT, we advise that you register for the test using your name as written in your passport.

Exemptions

In order to be granted an exemption from taking the UCAT you must contact the UG Admissions Team prior to 1 August in the year you will be applying. Exemptions will only be granted in extreme extenuating circumstances.

Applications without UCAT or where no prior exemption has been granted will not be considered.

How do we use the UCAT?

The Selection Committee uses your UCAT to make a more informed decision about your application. We assess your total UCAT score and your performance in the Situational Judgement Test (SJT) section. A band 4 in the

SJT is not accepted. We are currently reviewing the UCAT cut-off score for the 2024 admission cycle. A decision will be taken by 1 June 2023. Find out more here:

Edinburgh Medical School UCAT

Once all the scores are received we rank them, divide the cohort into deciles (ten equal groups) and allocate a score.

We also allocate a score to your situational judgement banding. The points are then added to your total score to contribute towards your final ranking.

The individual sections of the total score an applicant achieved may be looked at again when final decisions are made where there are applicants with the same ranked score and limited places left to offer.

UCAT

Special educational needs

Applicants applying to Edinburgh who have sat any of the alternative versions of the test must be able to supply evidence to support this in the form of a medical diagnosis or report from an appropriately qualified teacher or specialist.

The evidence should include a statement on how much extra time the candidate has been allowed in examinations.

Widening participation

Edinburgh Medical School fully supports the University's initiative to create a more diverse student population.

The central principles in selection remain that:

- selection decisions will continue to be based on the assessment of academic potential and aptitude for the respective professions
- by the declaration of transparent criteria, both academic and non-academic, applicants can be assessed fairly and equitably.

Therefore, we follow the University's Widening Access Offer Policy, and support the LEAPS and Reach initiatives, which seek to encourage and support applications from those from educational and social disadvantage.

More information about eligibility for support from LEAPS or Reach can be obtained from the Widening Participation team:

Widening Participation

Please note: Graduates applying for our undergraduate medicine degree do not qualify for any additional consideration under our widening access offer policy unless they are care experienced or are an asylum seeker/refugee.

Further information about minimum entry requirements can be found here:

Degree finder: entry requirements



Care-experienced applicants to higher education

Prospective students who identify themselves as having had local authority care experience in their UCAS applications will be provided with information about the support systems available to them at the University.

With permission, contact will be maintained throughout the MBChB programme to ensure students are being appropriately supported.

More information about the University of Edinburgh support for care-experienced applicants and students is available here:

Support for students with care experience

Protecting vulnerable groups

As with all UK medical schools, applicants to the Medicine programme are required to complete a criminal record check.

The main purpose of this check is to ensure that medical students can safely have contact with vulnerable adults and children, which is a feature of many healthcare courses and professions.

The Protecting Vulnerable Groups (PVG) Scheme is run by Disclosure Scotland.

The PVG scheme is an ongoing disclosure database that allows membership 'for life', which should cut down on the need to complete a detailed application every time a check is required.

Those parties who declare an interest in your membership will be notified if any new vetting information arises. Information is collected on a continual basis after PVG membership, thus ensuring that any new critical information can be acted on promptly.

All UK, EU and international applicants are

required to join the scheme. A Disclosure Barring Service (DBS) check cannot be used in lieu of a PVG check.

Those who have not lived in the UK before must still complete a PVG application using their current home address but must also either obtain a Certificate of Good Conduct from their own country, or complete a self-declaration form. Guidance on this is provided within your offer pack.

The Admissions Office will advise on how to complete a PVG application once you have accepted your offer.

Find out more about the PVG scheme:

 [The PVG scheme](#)

 [Background to the PVG scheme](#)



How we assess your application

Each application is assessed and scored independently by two selectors. We consider academic results, UCAT deciles and Situational Judgement Test (SJT) scores.

If an applicant attains a band 4 in the SJT, their application will be processed as unsuccessful. Applicants must meet or exceed our UCAT cut-off score in order to be considered further within the selection process.

Invitation to Assessment Day

The top scoring applicants will be invited to participate in an Assessment Day.

Ordinarily, this would take place in person over a half-day at Edinburgh Medical School.

However, in support of our sustainability policy, we are likely to continue to run virtual interviews for those domiciled outside Scotland.

The structure of the day is based on a consultation of clinicians and teachers in the medical school about the most important attributes we seek in our medical students.

These attributes have been selected from those published by the Medical Schools' Council:

MSC core values and attributes (PDF)

In addition we highly recommend that you read the GMC document, Outcome for Graduates:

Outcome for graduates

The day will involve four 'stations.' Each station will be scored independently by one selector.

You will be provided with more information about the Assessment Day if you are invited to attend.

Decisions following interview

Following completion of the Assessment Days, all applications will be reviewed.

The final score you attain will be based on the following: your academic score, UCAT decile and SJT band, as well as your interview score.

Each of these areas is weighted as follows:

Academic score (achieved and predicted):	25%
UCAT score (by decile):	17.5%
Situational judgement test (SJT) banding*	7.5%
Assessment Day scores	50%

Applicants will be ranked, and offers made to the highest-ranking candidates, in each of the fee categories.

The outcome of your application

Once all applications have gone through the selection process, we are then in a position to decide who is to be made an offer.

The number of students we can accept is controlled by the process of medical workforce planning that takes place in the Department of Health.

This in turn impacts on the number of places funded by the Scottish Funding Council and the number of places we have for students from other parts of the UK.

We usually make more offers than we have places as not all applicants accept their offer. All applicants should hear from us regarding the outcome of their application through UCAS.

Successful applicants

Successful applicants will normally have conditions to meet. Offer holders are required to verify their achieved qualifications and obtain a satisfactory PVG scheme disclosure.

Applicants who still need to pass exams may also have academic conditions in their offer. Offers will only become unconditional once all conditions have been met.

If you are successful, you will receive offer information electronically.

If you select us as your Firm choice, you will also receive a link to your offer pack and an email with a link to complete a PVG Scheme application form. We will also ask you to upload verified copies of certain documentation to your EUCLID portal.

These verified copies of your originals can be certified by: your school/education institution; GP; other working professional in the UK; official notaries, British Council; embassy.

Once your application is unconditional firm, you will receive an electronic joining pack (from late July onwards) from our Medical Teaching Organisation.

On your arrival here, if you are coming from anywhere outside the UK or EU, it is important that you bring with you all the original verified copies of the documents we requested from you to produce to us here in person.

Unsuccessful applicants

We are aware that many of our unsuccessful applicants would make suitable doctors. Sadly, due to the number of places we have, not everyone can obtain an offer. However, we do offer the opportunity to obtain feedback.

All requests should be emailed to medug@ed.ac.uk

Feedback will be available to unsuccessful applicants on request. However, the feedback we can provide will be limited where an applicant did not meet our standard entry requirements.

Student profiles

Rohan Burla



Year: 3.

Originally from: Born in England, but moved to Livingston, Scotland when I was three months old. My parents are Indian.

Favourite speciality: No clue, to be honest. What I have learned in these last two years has all been interesting!

The best thing about Year 2: GP placements – they have honestly been brilliant. It's been nice to go visit one of the areas in Lothian and have patient contact. My GP and group were amazing.

Societies and clubs: Medics Rugby, Medics Volleyball, Teddy Bear Society.

The best thing about Edinburgh: Greenery and its proximity to the suburbs. It's amazing how in ten minutes you can be close to the Pentland hills.

Top tip for new students: In your first weeks, try to go out and socialise: make new friends. Don't be afraid to try out clubs and societies – honestly, you will have the time to do other things apart from medicine!

Rosa Soon

Year: 6.

Originally from: Singapore.

Favourite speciality: Tough question! All are interesting but I would say Cardiology. I might be biased since I had a ten week block on the cardio ward in Year 4.

The best thing about Year 5: Being posted to Kirkcaldy for placements and being able to explore Fife.

Hobbies: Cooking and geocaching.

The best thing about Edinburgh: The city landscape! There are seven hills in Edinburgh, beaches, a castle overlooking the city and many parks to explore.

Top tip for new students: Always find time to hang out with friends and explore Edinburgh amidst studying! There's so much to do and many events to go to such as the Fringe festival.



Other things to consider

Is medicine right for you?

Medicine is a demanding but rewarding career choice. It requires a lot of work, from pre-application through to practising as a doctor.

You need to make sure that medicine is the right career for you.

Fitness to practise

The University has a responsibility to ensure that students studying on a programme which involves practical training in a clinical environment and which leads to a professional qualification which is registered with a regulatory body are fit to practise.

Students are expected to display professional behaviour and are monitored under a low-level concerns reporting system.

Any issue raised will be considered by the Medical School Commendations and Concerns Panel. In some cases, issues can be referred directly to the College of Medicine and Veterinary Medicine Fitness to Practise Committee. Students are expected to inform the Medical School of any issues which could mean that their fitness to practise is impaired.

Practising as a doctor requires high professional standards. Find out more from the GMC publication, Good Medical Practice, at:

 [GMC Good Medical Practice](#)

Disability support

If you have been offered a place to study and have a disability, learning difference or



health condition that may impact on your studies, please make contact with the University Student Disability Service and the Medical School Student Support Office before you arrive, to discuss your support needs. The Medical School will make reasonable adjustments for students where the disability or condition would not prevent the student from fulfilling the required competencies to graduate.

 [Medical School Student Support Office](#)

 [Student Disability Service](#)

Health checks and general fitness

The Department of Health requires all students admitted to the medicine degree to undergo viral screening for hepatitis B, hepatitis C and HIV, and to be immunised against hepatitis B. This will form part of your induction. A positive result in any test will not necessarily prevent entry to the medicine degree but would need to be investigated further.

Further information on the fitness standards expected of medical students is available from the Higher Education Occupational Physicians/ Practitioners (HEOPS).

 [HEOPS standards \(PDF\)](#)

Timeline

Applying and after you apply:
www.ed.ac.uk/undergraduate/apply

University

Detailed UCAS Timeline:
www.ucas.com/ucas/events

UCAS

Undergraduate open day — JUN

UCAT test must be sat (July-Sept) before making UCAS application

SEP

UCAS open for applications

OCT

16 October. Deadline for applying to Edinburgh Medical School
(UK, EU/EEA and international)

Assessment Days — DEC/JAN

Accommodation offers to unconditional offer holders begin — JUN

30 June. Deadline for all achieved qualifications as stated on your UCAS form as well as supporting documentation and completion of PVG

International baccalaureate results

Joining packs will begin to be sent to Unconditional Firm applicants — JUL

Scottish Higher results A Level results

Welcome packs and arrival instructions sent out to students — AUG — Deadline for any remaining offer conditions must be met (certificates must be received)

Accommodation application deadline

Welcome Week
Reading lists available
Meet your Year 1 buddy — SEP

For international applicants, all original certified copies of documents to be produced in person to the UG Admissions Team





THE UNIVERSITY
of EDINBURGH

EDINBURGH
extraordinary futures await

This publication can be made available
in alternative formats on request.

Contact

For further information, please contact:

E futurestudents@ed.ac.uk

www.ed.ac.uk/medicine

The University of Edinburgh is a charitable body, registered in Scotland, with registration number SC005336.

