

Postgraduate Online Learning Open Days 2025

MSc in Surgical Sciences part/time - online

Dr Valentina Ferlito
Lecturer and Deputy Director

21st-22nd May, 2025



In this Presentation:

- Brief Introduction to Surgical Sciences
- Programme Structure, Courses and Subjects
- Learning Activities and Assessments
- A Typical Course / Week / Day
- Admission, Fees and Funding Opportunities
- Q & A



Growing and leading in Surgery

Uniting Professional and Academic Excellence



Royal College of Surgeons
of Edinburgh – 1505

Professional Development
(MRCS, FRCS)



THE ROYAL
COLLEGE OF
SURGEONS
OF EDINBURGH



University of Edinburgh – 1582

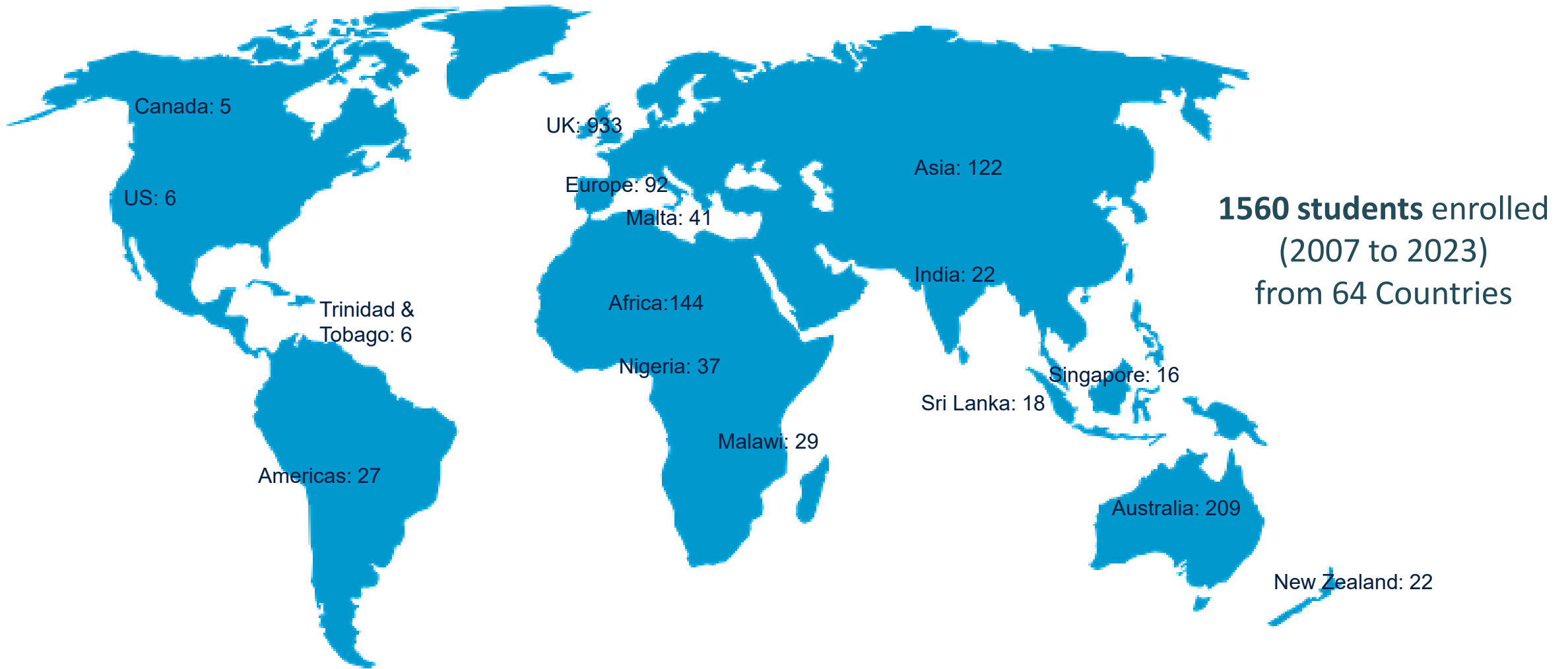
Academic Development
(MBChB, MD, MSc, PhD and more)



THE UNIVERSITY
of EDINBURGH

EDINBURGH
extraordinary futures await

Global reach: MSc Surgical Sciences



THE UNIVERSITY
of EDINBURGH

EDINBURGH
extraordinary futures await

The MSc in Surgical Sciences

Supports surgical trainees to:

- Acquire understanding of applied basic surgical sciences
- Consolidate knowledge base for MRCS curriculum (UK) or global equivalent
- Support professional development
- Complement in the work place training

Provides opportunities for ambitious trainees to acquire additional qualifications which would:

- Enhance portfolio and promote career development
- Provide trainee with essential 'academic tools' to support life-long learning

Provides opportunities for prospective academic surgeons to acquire qualification which would:

- Identify career intentions
- Provide academic base for career development

Advocates for equity of access (globally):

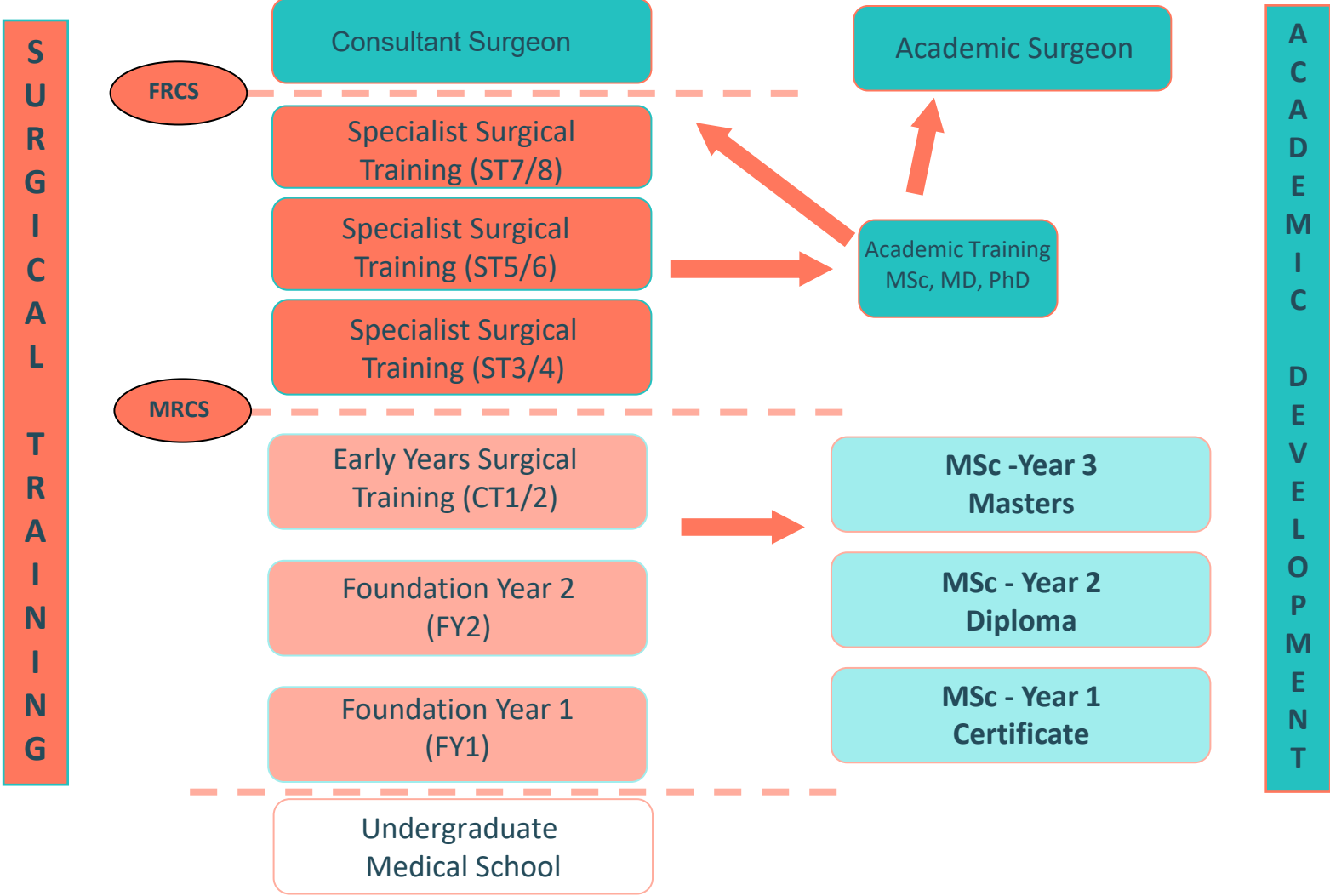
- Scholarships



THE UNIVERSITY
of EDINBURGH

EDINBURGH
extraordinary futures await

UK Surgical Training Structure



The Surgical Sciences Team



Prof Stephen J Wigmore
Programme Director

Academics

Years 1 & 2



Dr Valentina Ferlito
Deputy Director



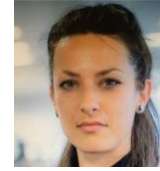
Caitlin Tiffany
Teaching Fellow

Year 3



Dr Louise Buckley
Deputy Director

Core Professional Services



Marta Zadzilko
Programme Administrator



Sarah Petrie
Student Adviser

Clinical

Year 1



Miss Ijeoma Azodo
Clinical Lead

Year 2



Mr Peter Lamb
Clinical Lead

Year 3



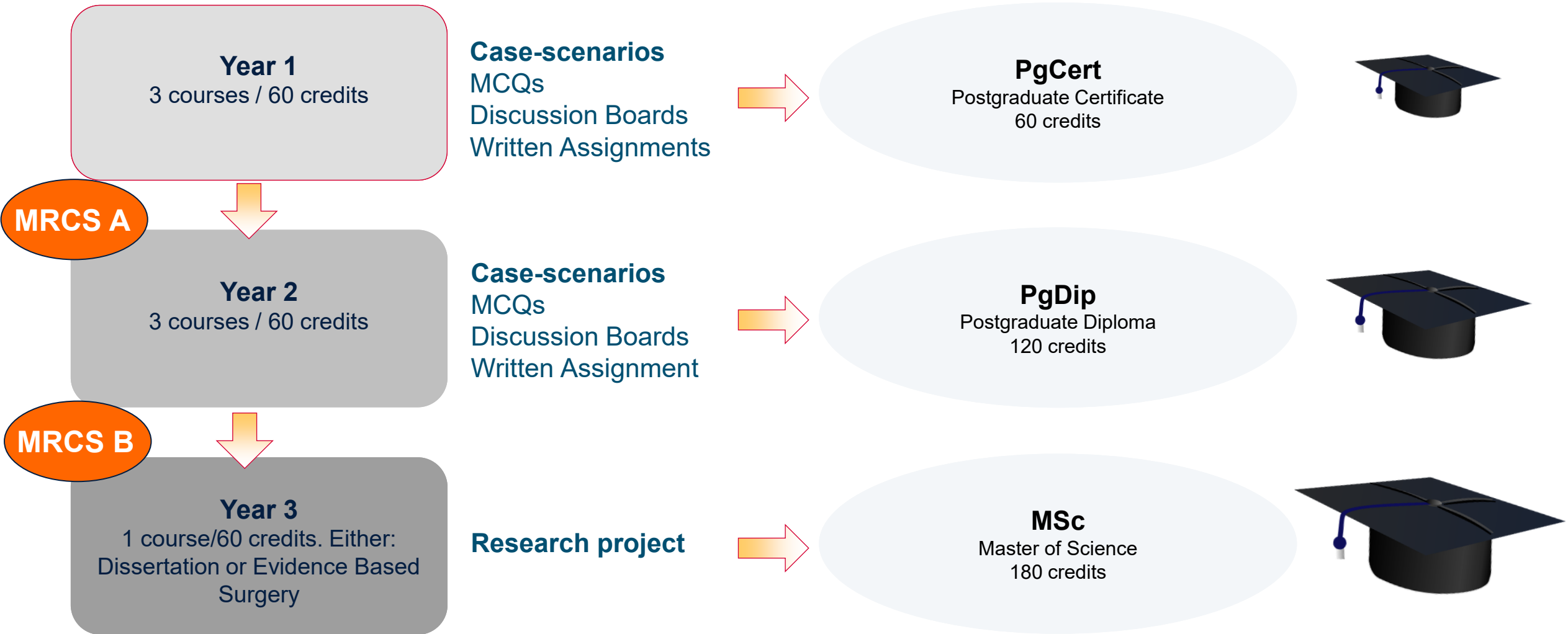
Prof Damian Mole
Clinical Lead



THE UNIVERSITY
of EDINBURGH

EDINBURGH
xtraordinary futures await

Programme Overview



THE UNIVERSITY
of EDINBURGH

EDINBURGH
xtraordinary futures await

Academic Calendar (Years 1 and 2)



Period	Start / End	Year 1 Course	Year 2 Course
Term 1	Sept 8 th to Dec 7 th	Cardiorespiratory Science	Principles of Surgical Management
Winter Break	Dec 8 th to Jan 4 th		
Term 2	Jan 5 th to March 29 th	General Surgery	Communication and Care
Spring Break	March 30 th to Apr 12 th		
Term 3	Apr 13 th to June 14 th	Locomotor, Urology and ENT/OMFS	Academic Surgery, Orthopaedics and Trauma
Summer Break	June 15 th to Sept		



Subjects in Years 1 & 2 Courses



Year 1- focuses on Anatomy, Pathology, and Physiology

Cardiorespiratory Science, GI, Colorectal, Breast, Endocrine, Neoplasia, Cell Biology, Immunology, Microbiology, Locomotor Systems, Urology, ENT/OMFS, Burns

Year 2- Focuses on Surgical Patient Management and Academic Surgery

Surgical Skills, General Surgery, Paediatric, Surgical Oncology, Vascular, Cardiothoracic, Neurosurgery, Plastics, Communication Skills, Pre/perioperative Management, Critical and Palliative Care, Trauma and Orthopaedics

Academic Surgery (Principles of Study Design and Critical Appraisal + Statistics)



THE UNIVERSITY
of EDINBURGH

EDINBURGH
xtraordinary futures await

Learning Activities and Assessments in Years 1 & 2 Courses

Learning Activities

- Reading and multimedia resources
- Pre-recorded lectures (asynchronous)
- Facilitated Discussion Boards
- Formative Assessments



Assessments (each course)

- Online Asynchronous Facilitated Discussion Boards (4 to 5 – 2 to 3 weeks long)
- A written assignment for each course (case study, critical appraisal, essay, reflective essay, etc)
- Formative (mandatory MCQ tests: 1 test for each module/subject)

MSc Surgical Sciences – Year 3 Options and courses (may change)

Dissertation Course: The dissertation course will allow you to conduct your own independent, original research project in a topic and format of your own choice. The phases leading up to hand-in of the research project are outlined below.

Phase 1	Phase 2	Phase 3	Phase 4
Outline Project Approval 10%	Detailed Summary Submission 20%	Formal e-Poster Presentation 20%	Masters Project Report 50%
September	October	March	May

Evidence Based Surgery Course: The evidence based course includes an initial taught element, where you will develop a critical and reflective understanding of the research design process, before going on to develop and undertake an independent research project. The phases of this course are outlined below.

Phase 1 (10 weeks: Taught)	Phase 2a (5 weeks: Taught)	Phase 2b (15 weeks: Independent)
Foundations of Evidence Based Surgery 30%	Research Methodology 20%	Research Project 50%



A typical Course

Week	From Monday:	To Sunday:	Subject	Assessment
1	Jan 6 th	Jan 19 th	Gastrointestinal Surgery 1 (OG and General)	GI1 Discussion Board
2				GI1 MCQ test GI1 Written Assignment
3	Jan 20 th	Feb 2 nd	Gastrointestinal Surgery 2 (HPB & Transplant)	GI2 Discussion Board
4				GI2 MCQ test
5	Feb 3 rd	Feb 16 th	Colorectal	CR Discussion Board
6				CR MCQs test
7	Feb 17 th	Mar 2 nd	Neoplasia (non-assessed helpdesk)	Neoplasia MCQ test
8			Skin (non-assessed helpdesk)	Skin MCQ test
9	Feb 24 th	Mar 9 th	Breast	Breast Discussion Board Breast MCQs test
10	Mar 10 th	Mar 23 rd	Endocrine	Endocrine Discussion Board
11				Endocrine MCQs test
12	Mar 24 th	Mar 30 th	Immunology & Haematology (+ non-assessed helpdesk) Microbiology (+ non-assessed helpdesk)	Immun. & Haemat. MCQ test Microbiology MCQ test
Study time and assignment preparation				
GI1 Written Assignment submission deadline				



THE UNIVERSITY
of EDINBURGH

EDINBURGH
extraordinary futures await

A typical Week / Day



THE UNIVERSITY
of EDINBURGH

EDINBURGH
extraordinary futures await

Why this part-time study model works globally

Students can study flexibly (or semi-flexibly):

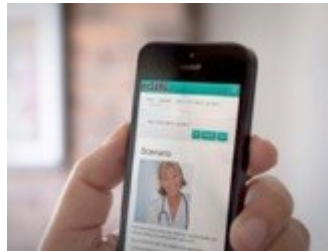
- Anywhere



- Anytime
(semi-flexible)



- Many device



THE UNIVERSITY
of EDINBURGH

EDINBURGH
extraordinary futures await

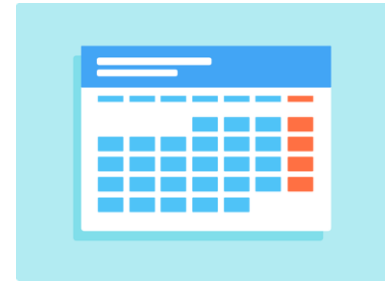
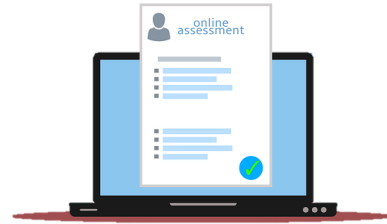
How do we improve it ?

We adapt to student's needs:

- We collect student's feedback...



- We propose *ad hoc* solutions....



- We implement adequate changes....



Entry Requirements

Academic Requirements

- > An accredited medical degree (MBChB or equivalent)
- > You must be in a supervised clinical position while you are studying in this programme.
- > Did not complete both MRCS A and B

English Language Requirements

- > English language Test
- > Degrees taught and assessed in English

For details please visit:

Degree Finder Pages (see our Edinburgh Surgery Online Website and navigate to programmes - MSc Surgical Sciences)



Fees and Funding opportunities

> Programme fees 2025/26:

Year 1: £4,560 **Year 2:** £5,320 **Year 3:** £5,320

> ASiT – ESO Bursary:

- £1500 towards annual tuition fees (max 4500 over 3 years)
- Offered to ASiT members resident in the UK for the duration of the programme and working in a supervised clinical environment
- Deadline: 2nd June 2025

> Edinburgh Surgery Online Global Scholarships

- Full tuition fees, awarded to applicants who are nationals and residents in LMICs with a firm, admission offer.
- Deadline: May 30th 2025

<https://clinical-sciences.ed.ac.uk/edinburgh-surgery-online/scholarships>



THE UNIVERSITY
of EDINBURGH

EDINBURGH
extraordinary futures await

Funding Opportunities

> The Glenmore Postgraduate Scholarships

- Full tuition fees, awarded to applicants who are currently domiciled in Countries in this list: [DAC List of ODA Recipients 2025-2026](#), with a firm, unconditional admission offer.
- by 29th May 2025

<https://registryservices.ed.ac.uk/student-funding/postgraduate/e-learning/glenmore>

> Commonwealth Scholarships

- full tuition fees, with contributions towards other costs
- Deadline: 20th May 2025

<https://registryservices.ed.ac.uk/student-funding/postgraduate/e-learning/common-distance-learning>

Link to all Scholarships:

<https://clinical-sciences.ed.ac.uk/edinburgh-surgery-online/scholarships>



THE UNIVERSITY
of EDINBURGH

EDINBURGH
extraordinary futures await

Student Support at the University

The student support model provides you with the best experience of university life and ensure you feel supported during your studies

- Student Advisers: main support for studies
- Cohort Lead: Academic guidance and support
- Course organisers and tutors: Subject specific support

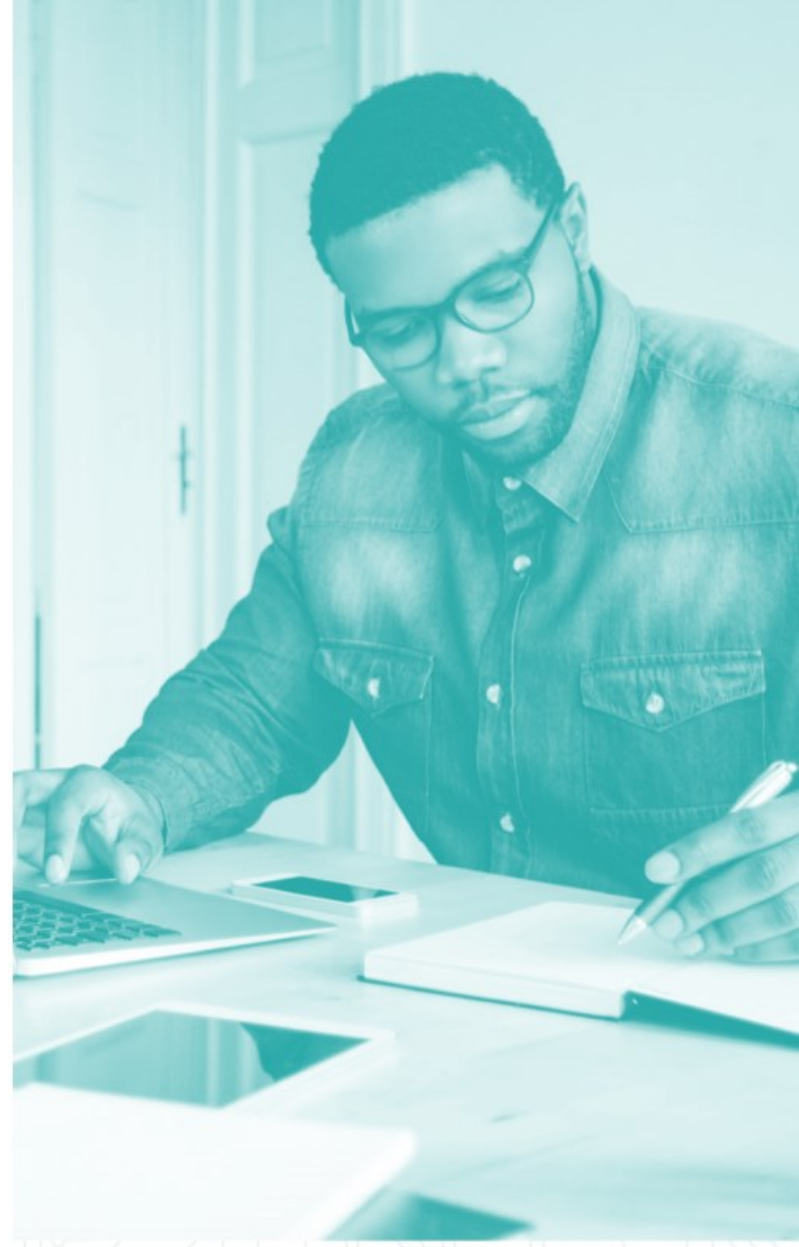


THE UNIVERSITY
of EDINBURGH

EDINBURGH
xtraordinary futures await

How Does Online Learning Work?

An Introduction to online learning degrees at The University of Edinburgh



THE UNIVERSITY
of EDINBURGH

EDINBURGH
xtraordinary futures await

Is the Online learning for you?

Some Key traits of successful online learners:

- Self-motivated and self-driven towards learning.
- Excellent time-managers - freedom and ability to working at their own pace and time, whilst meeting assignment deadlines.
- Strong reading comprehension and writing skills
- Highly focused - filter out constant distractions and disturbances that threaten progress.
- Reflective and Comfortable missing the social elements of traditional on-campus programmes



Contact details for follow-up questions

If you have further questions that have not been answered, please email:
info.surgicalsciences@ed.ac.uk



THE UNIVERSITY
of EDINBURGH

EDINBURGH
extraordinary futures await



THE UNIVERSITY
of EDINBURGH

Thank you !

Dr Valentina Ferlito &
The MSc Surgical Sciences Programme Team
Info.surgicalsciences@ed.ac.uk