

Postgraduate Online Learning Open Days 2025

How studying
Paediatric Emergency
Medicine can positively
impact your career

Dr Tom Beattie (Programme Director)
Dr Laura Smith (Deputy Programme
Director)

21st May 2025, 2pm (BST)



Postgraduate Online Learning Open Days 2025

How studying
Paediatric Emergency
Medicine can positively
impact your career

Dr Tom Beattie (Programme Director)
Dr Laura Smith (Deputy Programme
Director)

21st May 2025, 2pm (BST)



Overview of Session

- Welcome!
- Why study PEM with us?
- Structure
- Teaching, Learning & Support
- Q&A



THE UNIVERSITY
of EDINBURGH

EDINBURGH
extraordinary futures await

Why study PEM with us?

Comprehensive and flexible

Challenging but rewarding

Career and academic
opportunities

Aligned with PEM curriculum
RCPCH and RCEM



THE UNIVERSITY
of EDINBURGH

EDINBURGH
extraordinary futures await

Student Testimonial

“Throughout this MSc programme, I have grown and my eyes opened to improving paediatric emergency care – mostly in low resource settings like mine. I have become more resourceful in improving care and an advocate of safe practices in our emergency department. I am grateful for this lifetime opportunity to contribute to emergency care growth in my country as it’s still in infancy”

Dr Anna Meridah Kaguna, Uganda



THE UNIVERSITY
of EDINBURGH

EDINBURGH
extraordinary futures await

Classroom to Clinic

“Professionally, I have gained confidence because I can speak with facts and evidence on how we do things and why they work”

“Management trusted me to separate the wards and develop a separate paediatric emergency unit”

“I am now training colleagues in best practice”

Giftly Halidu, Paediatric Nurse (Ghana)
and Commonwealth Scholar



THE UNIVERSITY
of EDINBURGH

EDINBURGH
extraordinary futures await

Our students

Clinicians from across the globe,
forming a diverse international
community.

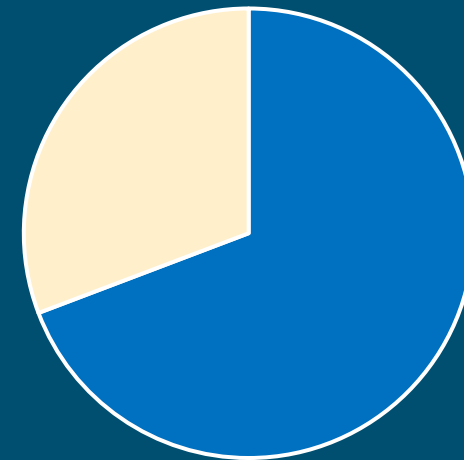


Medical, ANPS, Paramedics.



Students aged 27-56. median 36
years.

Gender



□ Female ■ Male



THE UNIVERSITY
of EDINBURGH

EDINBURGH
xtraordinary futures await

Programme Structure

2025/26 Entry

Core courses

Optional courses

* 20 credits

** 40 credits

**Year 1
PgCert**

Fundamentals in Paediatric Emergency 1*

Fundamentals in Paediatric Emergency 2*

Fundamentals in Paediatric Emergency 3*

**Year 2
PgDip**

Paediatric Medical Emergencies*

PEM Pathway

PCCM Pathway

Surgical Emergencies &
Trauma, Anaesthesia &
Sedation*

Paediatric Critical Care 1*

Additional Topics in PEM*

Paediatric Critical Care 2*

**Year 3
MSc**

Management Issues in PEM *

Written Reflective
Element**

Advancing Special Interests
in PECM**



THE UNIVERSITY
of EDINBURGH

EDINBURGH
extraordinary futures await

Structure: Certificate Year

- Introduction to essential PEM content
- Develop skills for online learning
- Develop online searching for material
- Develop scientific writing and presentation skills
- Develop analytical and critical skills



Structure: Diploma Year

- Builds on Year 1 content
- Compulsory course in medical emergencies
- Option to pursue PEM or Paediatric Critical Care courses
- Develop online searching for material
- Develop scientific writing and presentation skills
- Develop analytical and critical skills



Structure: MSc Year

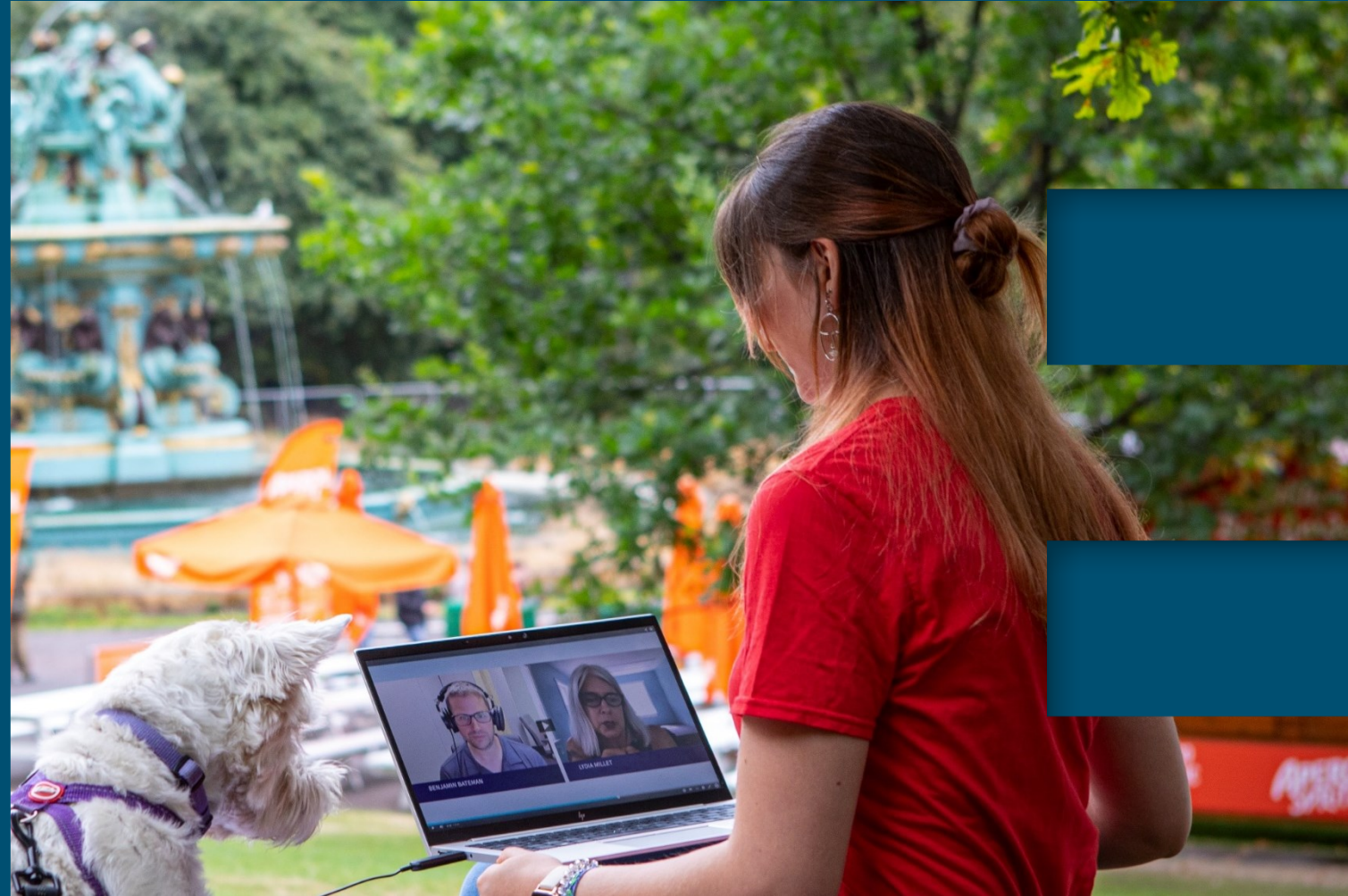
- **Core course: Management Issues in PEM (20 credits)**
 - Group work that explores organisation of ED, risk management, surge management, change management and data management.
- **Optional course (40 credits)**
 - **Written Reflective Element:** Dissertation equivalent. Academic focus.
 - **Advancing Special Interests in PECM:** Designed to help you develop a special interest. Project-based and professional focus.



Postgraduate Online Learning Open Days 2024

Teaching, Learning and Support

Dr Laura Smith
Deputy Programme Director
Academic Cohort Lead



Teaching and Learning (1)

- Problem-based Learning Curriculum
 - Medicine ever-changing knowledge base
 - Need to understand and appraise current literature
 - Need to prepare for the future
- No formal teaching: facilitated active learning
- Course assessments:
 - Exercises
 - Discussion Boards
 - Major Assignments



Teaching and Learning (2)

What we will do:	What we expect from you:
Provide opportunities to explore PEM	Regular and consistent work
Guide you as required (light touch)	10-15 hours per week (averaged over the 11 week courses)
Communicate effectively	Communicate with us and your peers



Support

ADMINISTRATIVE

- Programme Team
- Information Services
- Library

ACADEMIC

- Programme Director
- Cohort Lead
- Course Tutors

PASTORAL

- Student Adviser
- Wellbeing Service

GENERAL

- University Community
- Fellow Students
- Student Reps / EUSA

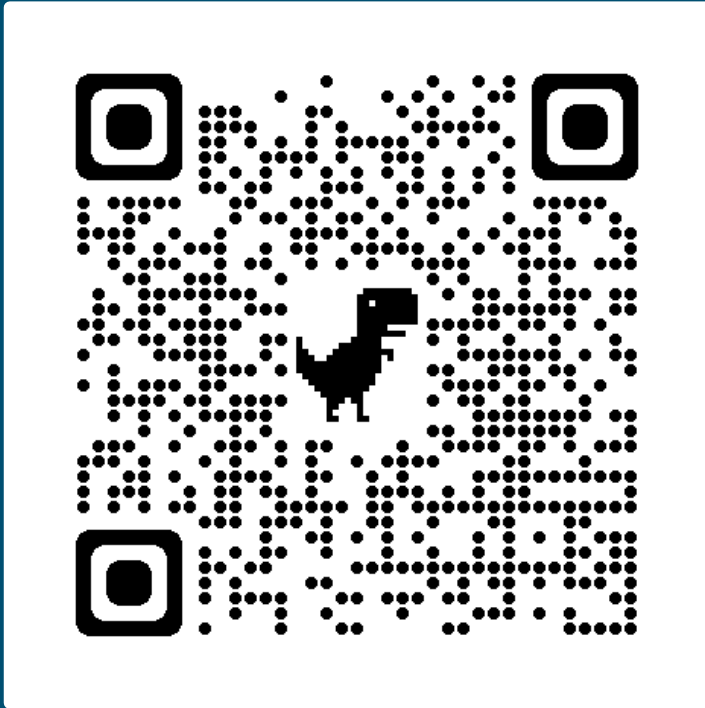


Entry Requirements

- Medical degree or degree in subject relevant to PEM, plus one year of postgraduate clinical experience
- Actively involved in urgent/emergency clinical care of ill and injured children
- Ongoing commitment to the clinical care of children
- Evidence of English language proficiency**



Want to find out more?



Programme website

pecm@ed.ac.uk

Programme mailbox



THE UNIVERSITY
of EDINBURGH

EDINBURGH
extraordinary futures await

Contact details for follow-up questions

We apologise if we did not get through all of your questions in the time allotted for this session.

If you have further questions that have not been answered, please email the programme team at: pecm@ed.ac.uk

If you have general enquiries, please email: futurestudents@ed.ac.uk



THE UNIVERSITY
of EDINBURGH

EDINBURGH
extraordinary futures await



THE UNIVERSITY
of EDINBURGH

Thank you

Dr Tom Beattie

tom.beattie@ed.ac.uk

Dr Laura Smith

laura.hodges@ed.ac.uk