

# Postgraduate Online Learning Open Days 2025

[Programme title]

[Programme Director/s]



THE UNIVERSITY of EDINBURGH  
Edinburgh Futures Institute

Join us to **Challenge. Create. Change.**

# Planetary Health

## **Professor Liz Grant**

Global Health Academy, College of Medicine and Veterinary Medicine

## **Dr Rowan Jackson**

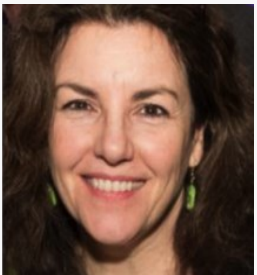
Royal Dick School of Veterinary Studies, Global Agriculture and Food Systems

## **Dr Ewelina Rydzewska**

School of Health in Social Sciences

## **Cynthia Naydani**

Royal Dick School of Veterinary Studies, Global Agriculture and Food Systems



THE UNIVERSITY of EDINBURGH  
Edinburgh Futures Institute

Join us to **Challenge. Create. Change.**

# Study at Edinburgh Futures Institute

## Interdisciplinary

Bringing arts, humanities and social sciences together with sciences, engineering and medicine to address complex global issues.

## Participatory and porous

Inviting diverse groupings to bring their ways of working and thinking together. EFI extends this invitation to industry, the public and government.

## Critical and research-led

Working on pressing social issues that require new ways of thinking. Mindful of the role of universities in confronting uncomfortable questions.

## Future-facing

Embracing the non-traditional, the untried and the unexpected. EFI defines challenges and co-creates responses to build better futures.



THE UNIVERSITY of EDINBURGH  
Edinburgh Futures Institute

Join us to **Challenge. Create. Change.**

# Sustainable Futures

- Data, Inequality and Society
- Planetary Health
- Sustainable Lands and Cities
- Future Infrastructure, Sustainability and Climate Change



# Creative Futures

- Service Management and Design
- Creative Industries
- Narrative Futures: Art, Data, Society
- Cultural Heritage Futures



# Just Futures

- Data and AI Ethics
- Education Futures
- Future Governance



THE UNIVERSITY of EDINBURGH  
Edinburgh Futures Institute

Join us to **Challenge. Create. Change.**



# What's Different About Education at EFI?

- interdisciplinary programmes taught by leading academics from different Schools and disciplines
- equipping you with the critical, data and creative skills needed to navigate a rapidly-changing world
- you can study flexibly, please see degree finder for programme specific information and options
- we will help you apply leading-edge knowledge to live projects you care about
- we are proud of our ecosystem and the opportunities to connect you to our partners in the community, industry and government



THE UNIVERSITY of EDINBURGH  
Edinburgh Futures Institute

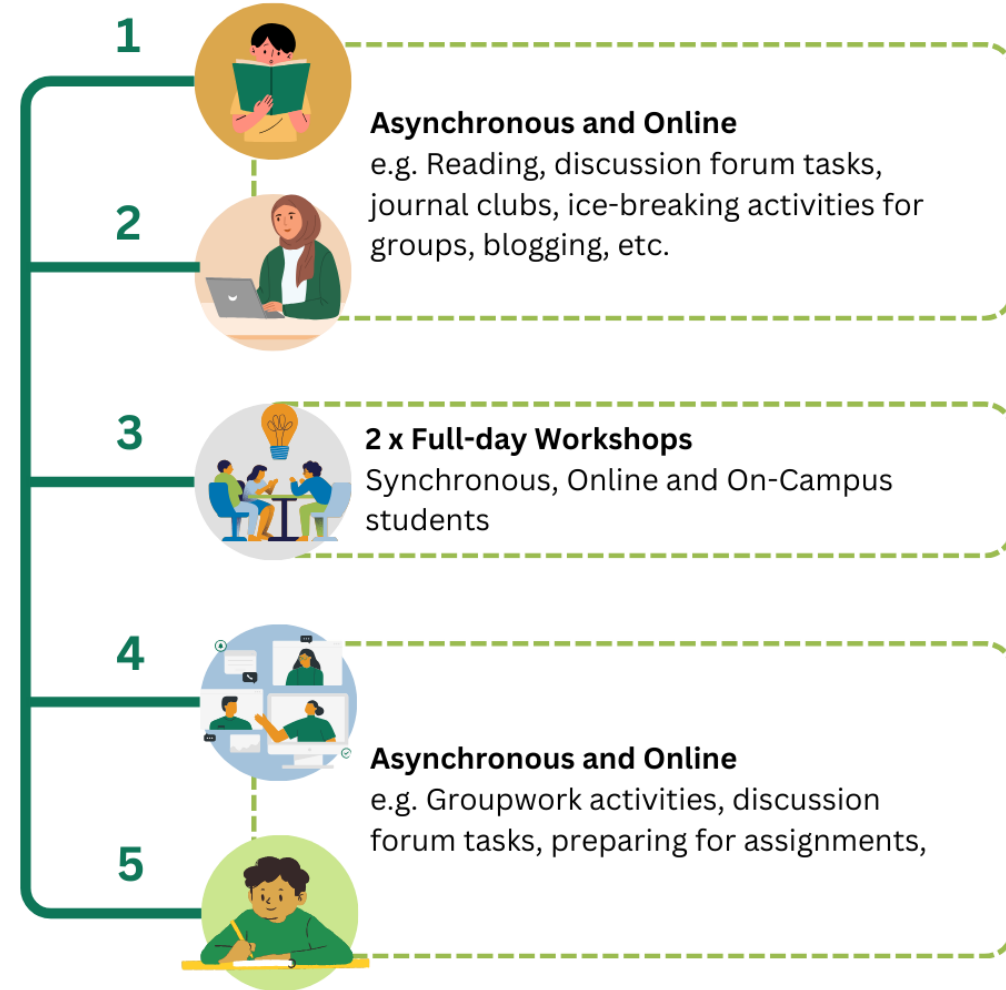
Join us to **Challenge. Create. Change.**

# Fusion Teaching

- breaking down the online/on-campus distinction
- community-focused: bringing students from across the world together as a single cohort
- accessible: most courses are taught in five week blocks, with online activities and a two day long intensive sessions (09:00-17:00 Edinburgh local time)
- connected: employers work with us on the design and teaching of our programmes and help support projects

## Intensive Course Timeline

Weeks



THE UNIVERSITY of EDINBURGH  
Edinburgh Futures Institute

Join us to **Challenge. Create. Change.**

# Our MSc Programme Structure

Integration (20 credits)

Project (40 credits)

Shared core (40 credits)

Programme core (20 or 40 credits)

Electives (40 or 60 credits)



THE UNIVERSITY of EDINBURGH  
Edinburgh Futures Institute

Join us to **Challenge. Create. Change.**

# Our Core Courses

## Futures Methods

Practical skills to apply cutting-edge futures and foresight methods and tools across diverse fields

## Insights Through Data

Data science foundations, analytic and programming skills

or

## Text Remix

Basic programming and creative skills

## Representing Data

Programming and maker skills for data visualization and physicalisation

or

## Building Near Futures

Futures methods and responses shared in a public-facing format

## Ethical Data Futures

The ethical dimensions of contemporary data practices





# Skill Focused

Working in cross-disciplinary teams with students from other Futures Institute programmes, you will learn critical data skills, ethical awareness, creative thinking, and methods to address complex issues:

- collect, manage and analyse computational datasets
- use emerging methodologies for mapping and designing possible futures
- learn the fundamentals of data ethics
- learn how to use creative skills in the analysis and representation of data-informed and qualitative inquiry



# The Student Experience

- global and diverse cohort, on campus and online
- a very well supported experience with a dedicated student experience and support team
- events and networks to connect with each other

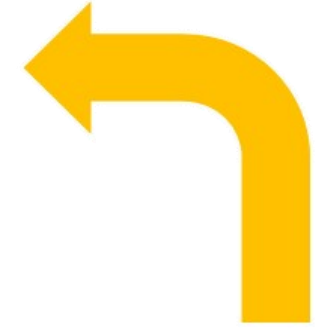
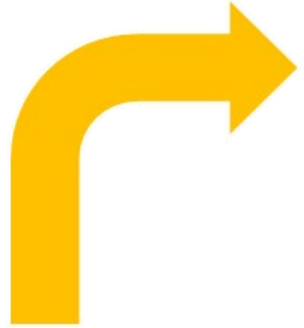


THE UNIVERSITY of EDINBURGH  
Edinburgh Futures Institute

Join us to **Challenge. Create. Change.**



THE UNIVERSITY of EDINBURGH  
Edinburgh Futures Institute



**usher**  
institute

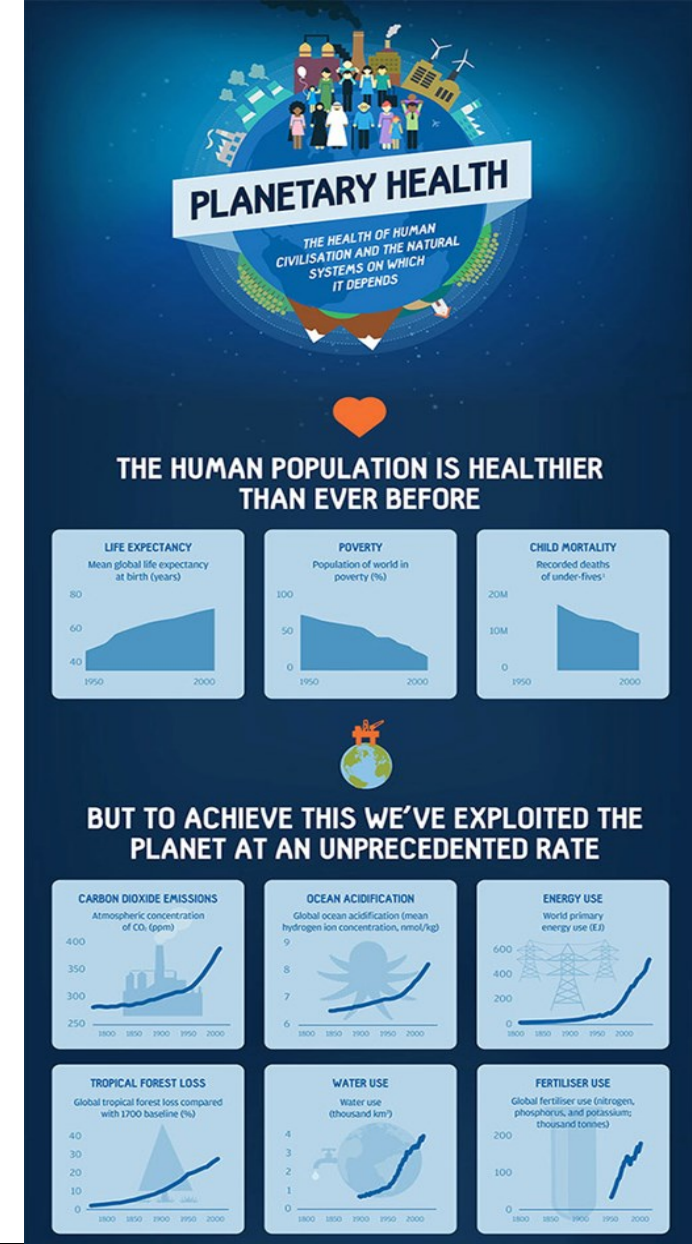


THE UNIVERSITY of EDINBURGH  
Global Academy of  
Agriculture and Food Systems



# What is Planetary Health?

**Planetary Health:** “is the achievement of the highest attainable standard of health, wellbeing, and equity worldwide through judicious attention to the human systems—political, economic, and social—that shape the future of humanity and the Earth’s natural systems that define the safe environmental limits within which humanity can flourish.”  
(Whitmee et al., 2015: 1973)



# What is Planetary Health?

For societies to thrive, communities to grow, people to prosper and sustainable development to be achieved we need to be healthy. And the life sources upon which we depend also need to be healthy. The health of the planet (the air, the soil, the rivers, oceans and forests, our ecosystem and our climate) and the health of all living things are deeply intertwined, and they are deeply out of sync.

The Sustainable Development Goals **describe** a world of complex and multiple crises (biodiversity loss, pollution, shifting disease patterns, food, water and energy insecurity, economic instability and growing conflict) and **point** to solutions.

**Planetary Health seeks to understand the global transitions we are going through, and to propose strategies for bringing about improvements in the health of people and planet that will allow for a more sustainable flourishing future. Planetary Health is the system of health and wellness which underpin the Sustainable Development Goals.**



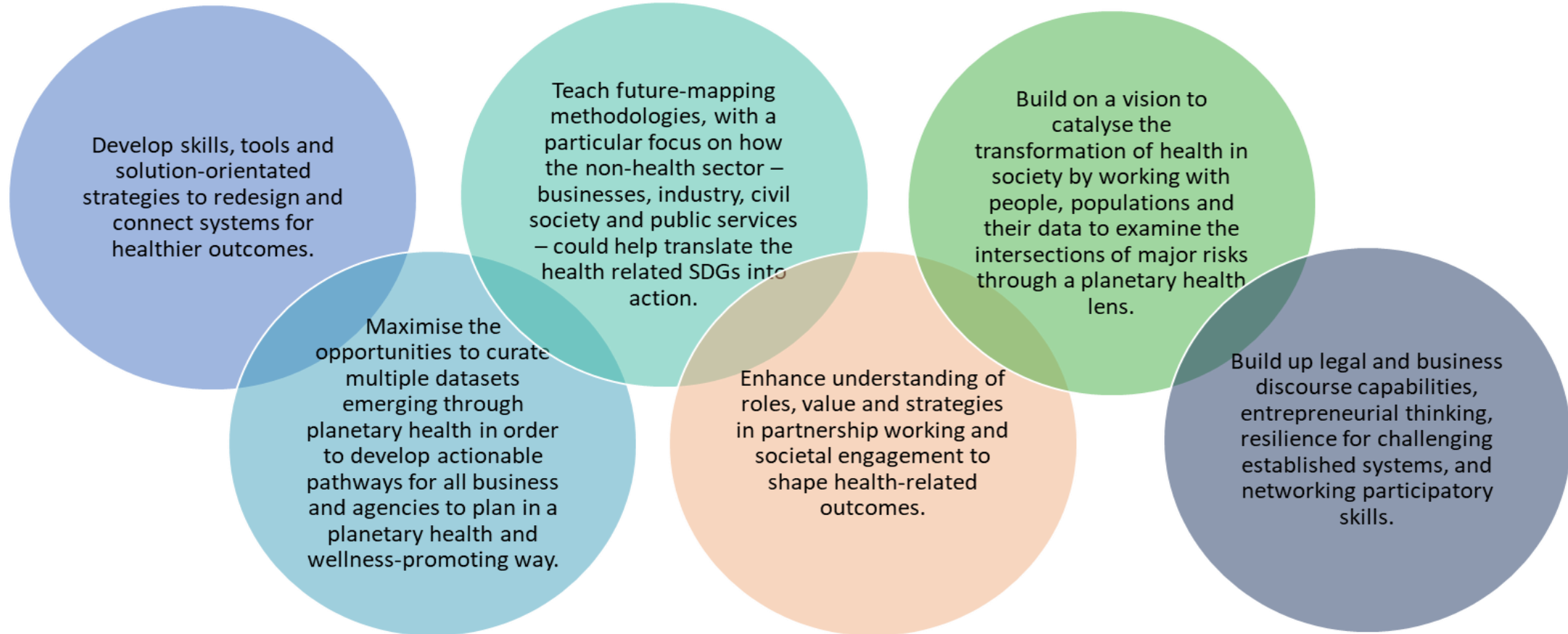
THE UNIVERSITY of EDINBURGH  
Edinburgh Futures Institute

Join us to **Challenge. Create. Change.**



# What Makes This Degree Significant?

The MSc in Planetary Health reimagines what the health of the future will look like by connecting those working in business, policy, public services, culture and education together. It will:



# Why Study Planetary Health at the University of Edinburgh?

You'll be joining a creative, innovative and interdisciplinary environment

Your studies will be supported by team of experts with health, environmental, economic, design and data-science expertise

The University of Edinburgh has world-leading expertise in health and environmental research

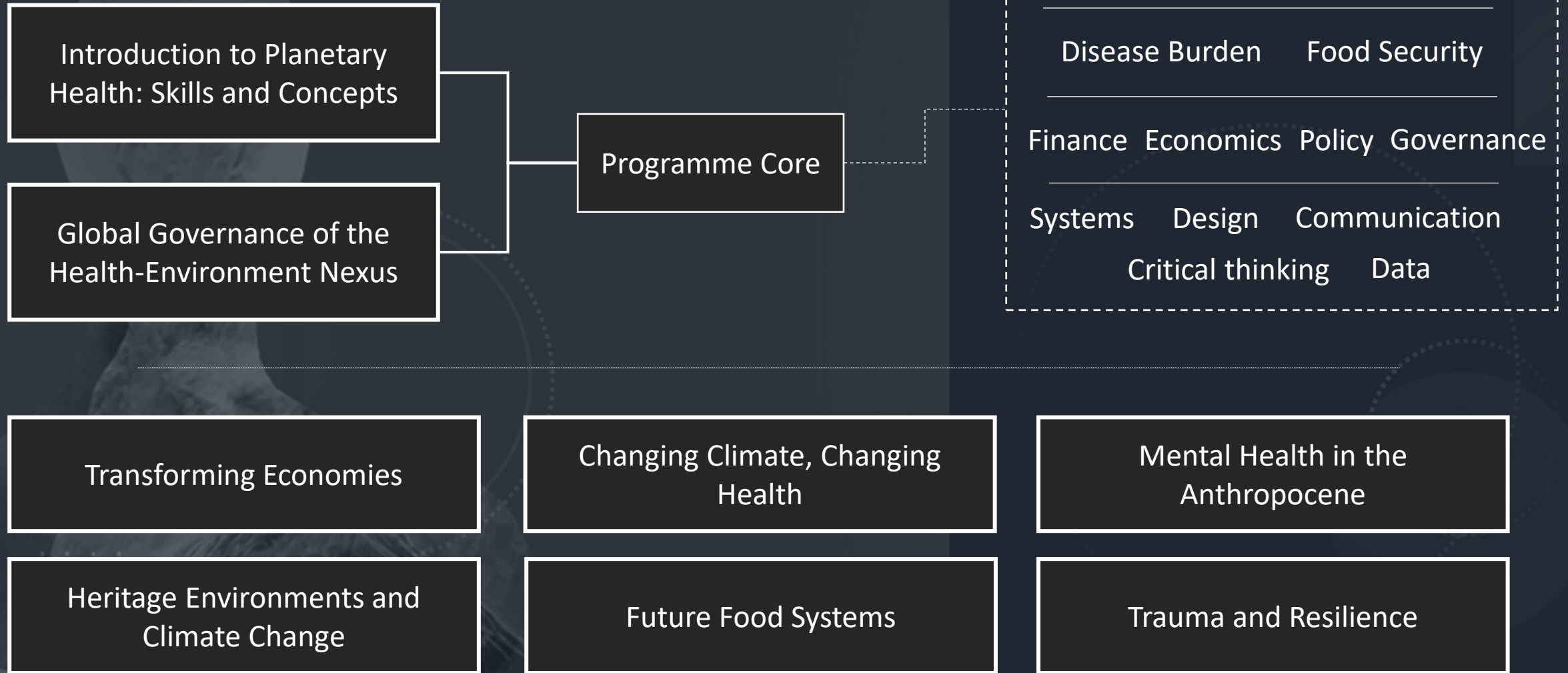
You will join a vibrant student community



THE UNIVERSITY of EDINBURGH  
Edinburgh Futures Institute

Join us to **Challenge. Create. Change.**

# Planetary Health Pathway



# What Will I Study?

## Compulsory Courses

Introduction to  
Planetary  
Health: Core  
Skills and  
Concepts (S1)

Global  
Governance of  
the Human  
Health-  
Environment  
Nexus (S2)

Futures  
Methods  
(S1)

Ethical Data  
Futures  
(S2)

Knowledge Integration and Project  
Planning (KIPP) (FULL YEAR) /  
Futures Project  
(BLOCK 5 / SUMMER)

## Shared Core Optional Courses

Insights  
Through Data  
(S1)

Text Remix  
(S1)

Understanding  
the Climate  
Crisis (S1)

Building Near Futures  
(S2)

Representing Data (S2)

## Course Options

Mental Health in the  
Anthropocene

Transforming  
Economies: A Wellbeing  
Economy Agenda

Trauma and Resilience

Future Food Systems

Changing Climate,  
Changing Health

Heritage Environments  
and Climate Change



THE UNIVERSITY of EDINBURGH  
Edinburgh Futures Institute

Join us to **Challenge. Create. Change.**

# Who Will Use Planetary Health Knowledge and Skills?

- Leaders, or those who aim to be leaders, in all sectors of business and industry who want to align their future vision and their ecological footprint to the global movement for an interconnected and inter-dependent world.
- Likely to be in strategic roles making connections between well-being and societal development, whether that is economic, environmental, social, legal, technological, or industry led.
- Leaders who understand the significance of the wider determinants of health and the intersection of human and environmental health issues within an ESG framework.
- Those currently working, or planning to work, in boundary roles in agencies fore-scanning and dealing with the risks, the impact and the consequences of global challenges to health and well-being at local, national and international level.
- Those considering how their enterprises and industry can contribute to a sustainable agenda, and those working to reduce their risks of being unsustainable or of having stranded assets.
- Careers that involve change-making and advocacy, health tech, sustainability, inclusion, health finance, business development, sectoral agenda setting or international and political engagement.
- Turning prior studies (in any discipline: humanities and social sciences, health, business) into sought after value assets for employment.





# Questions?

- for further queries contact: **[efi.education@ed.ac.uk](mailto:efi.education@ed.ac.uk)**
- visit the EFI website: **<https://efi.ed.ac.uk/postgraduate-study>**
- search for 'Edinburgh Futures Institute' on our degree finder: **<https://www.ed.ac.uk/studying/postgraduate/degrees>**



THE UNIVERSITY of EDINBURGH  
Edinburgh Futures Institute

Join us to **Challenge. Create. Change.**

Join us to **challenge, create**, and make **change** happen.



THE UNIVERSITY of EDINBURGH  
Edinburgh Futures Institute

Join us to **Challenge. Create. Change.**