

# Postgraduate Online Learning Open Days 2025

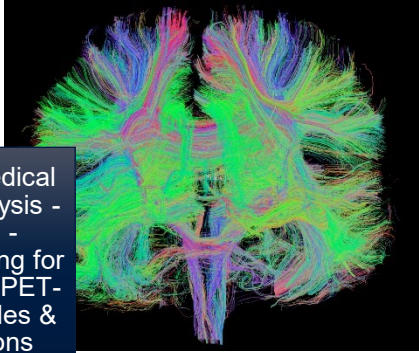
Postgraduate Online Learning:  
Deanery of Clinical Sciences  
(Information and Q&A)

Professor Simon Riley  
Director of Teaching, Deanery of Clinical  
Sciences, Edinburgh Medical School



# Programmes we will cover

Applied Medical  
Image Analysis -  
Imaging -  
Neuroimaging for  
Research - PET-  
MR Principles &  
Applications



Clinical  
Management of  
Pain



Critical Care



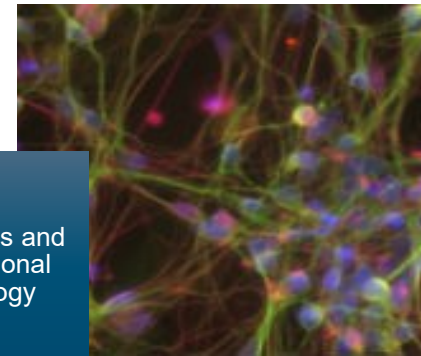
Internal Medicine



Restorative  
Dentistry



Stem Cells and  
Translational  
Neurology



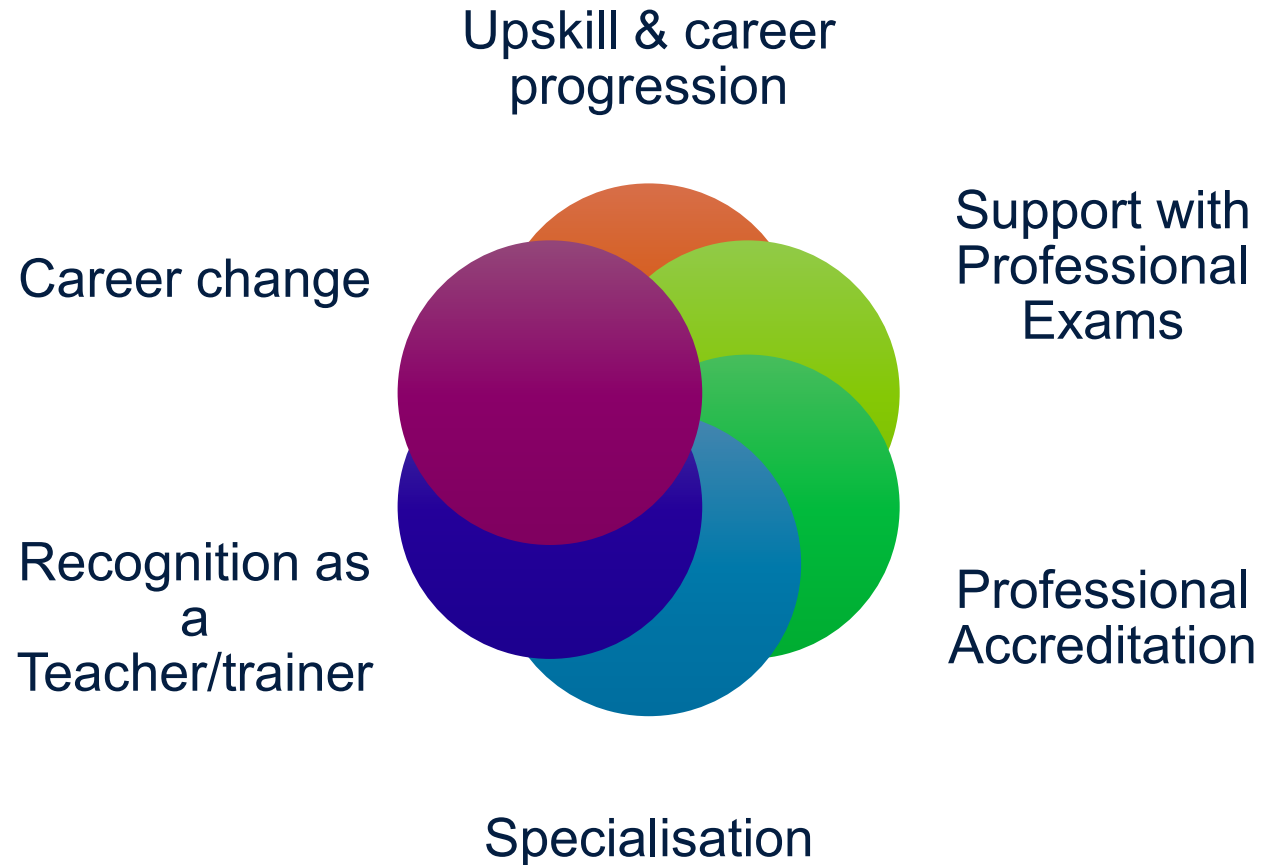
Surgery,  
Ophthalmology,  
Patient Safety and  
Paediatric  
Emergency  
Medicine covered  
in other sessions



THE UNIVERSITY  
of EDINBURGH

**EDINBURGH**  
xtraordinary futures await

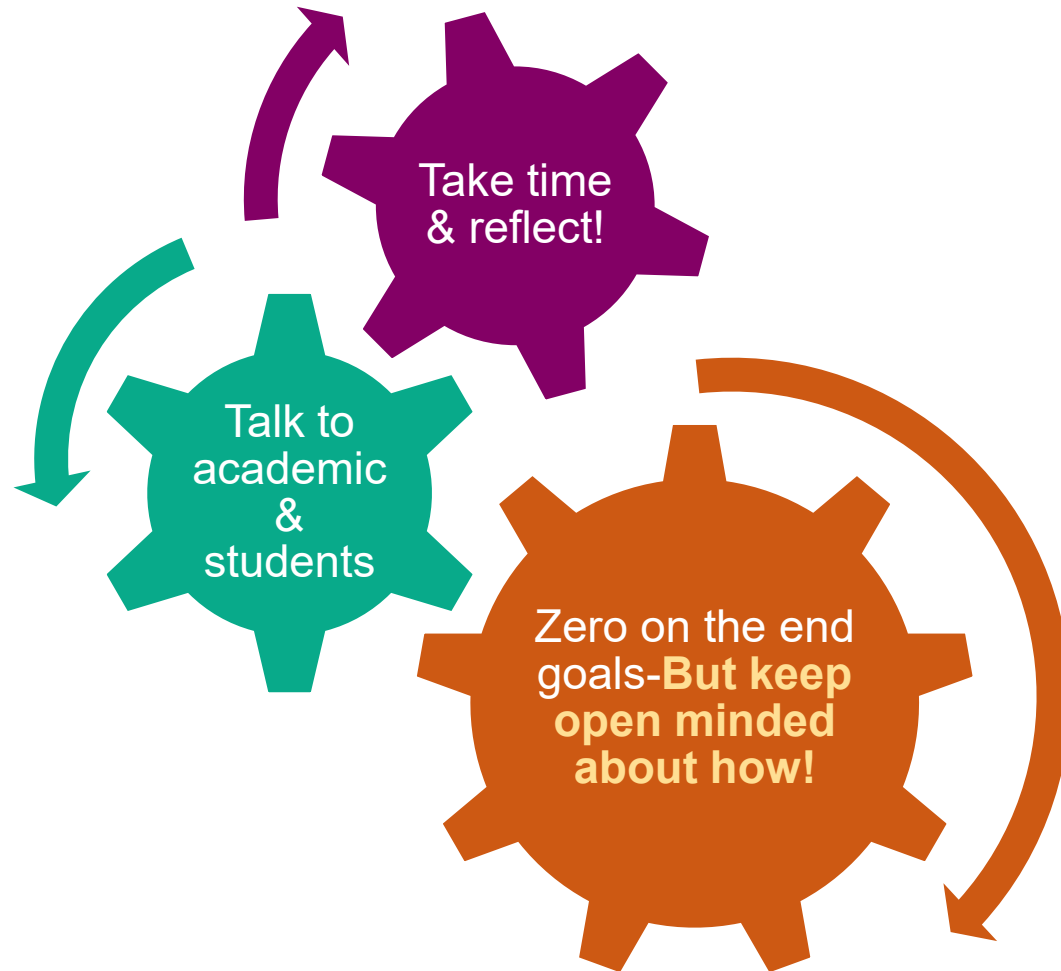
# Why study a PG programme..?



THE UNIVERSITY  
of EDINBURGH

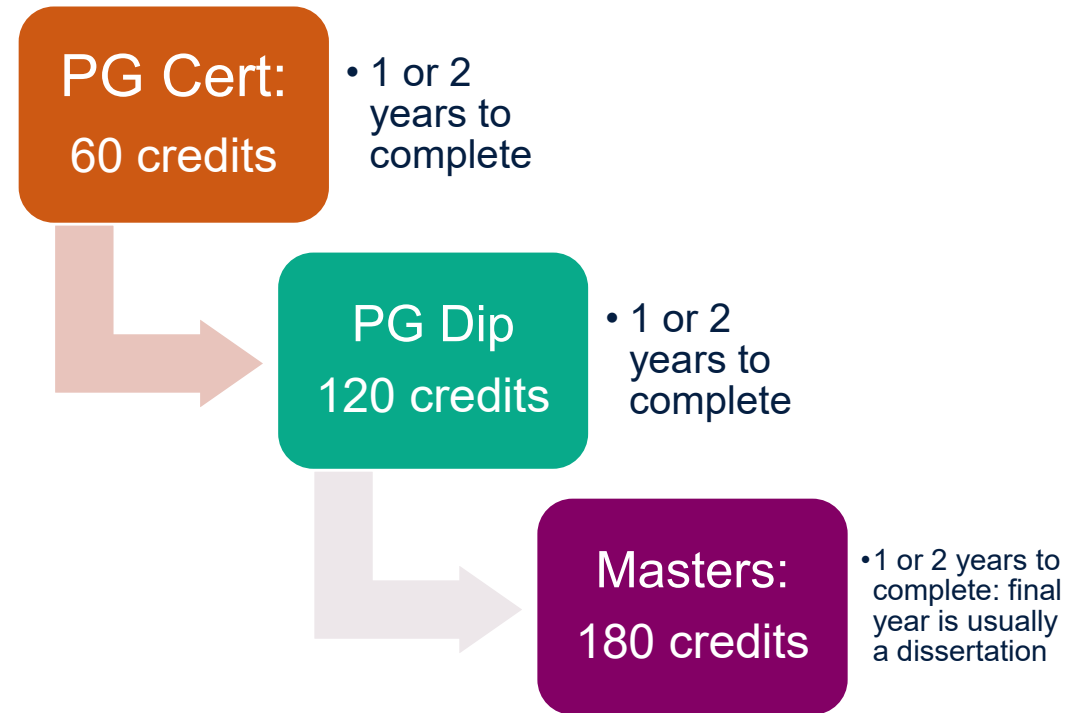
**EDINBURGH**  
xtraordinary futures await

# Finding your ideal programme



# Online programmes explained

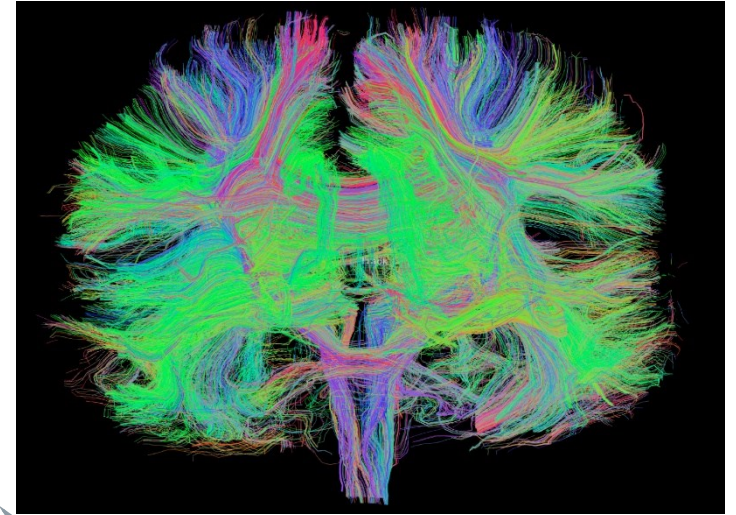
- **Flexible:** Taught 100% online, part time – Asynchronous learning
- **Diverse learning opportunities:** tutorials, lectures, workshops, group working, discussion boards...
- **Supportive environment:** Learn from expert tutors and from peers from across the globe!
- **Learning fits around you:** 15 to 20 hours per week of study
- **Prestigious qualification :** Final degree certificate of equal value as on campus programmes – Awarded by a world top 15 University





# Imaging programmes

- 2 MSc :
  - Imaging –
  - Neuroimaging for Research
- 2 stand alone PG Certs:
  - Applied Medical Image Analysis
  - PET-MR Principles & Applications
- Targeted at healthcare professionals
- Ideal for those wanting to increase their imaging knowledge & skills for application to research, clinical settings or industry.



Pathways in:

- Clinical / Medical Imaging / Radiology
- Image Analysis / Processing
- Imaging Science
- Preclinical / Animal Imaging
- Neuroimaging



THE UNIVERSITY  
of EDINBURGH

**EDINBURGH**  
extraordinary futures await

# Clinical management of Pain

- Multidisciplinary approach to pain management- delving into pharmacological and non-pharmacological pain management approaches
- Targeted at diverse healthcare professions: nurses, physiotherapists, psychologists...
- 1<sup>st</sup> year- PG CERT: 6 -core courses.
- 2<sup>nd</sup> year- PG Dip: variety of elective courses consistent with career objectives
- 3<sup>rd</sup> Year - MSc awarded after successful completion of project



## YEAR 1 COURSES

- Pain - A Multidimensional Phenomenon
- Assessment, Measurement and the Multidisciplinary Approach
- Neuroanatomy and Neurophysiology
- Understanding the Pharmacological Management of Pain
- Non-Pharmacological Approaches to Pain Management
- Introduction to Pain Management in Practice



THE UNIVERSITY  
of EDINBURGH

**EDINBURGH**  
extraordinary futures await

# Critical Care

- Offered in partnership with the Royal College of Physicians of Edinburgh
- The programme is aimed at doctors, nurses, paramedics and allied health professionals.

## Structure

- 1<sup>st</sup> year- PG CERT: 6 -core courses.
- 2<sup>nd</sup> year- PG Dip: variety of elective courses consistent with career objectives
- 3<sup>rd</sup> Year - MSc awarded after successful completion of dissertation



### YEAR 1 COURSES

- Fundamentals: Rescue and Resuscitation
- Unlocking the literature: Clinical Trials
- Core Clinical Practice in Critical Care
- Trauma, Toxicology and Temperature
- Sepsis and Infection
- Human Factors in Critical Care



THE UNIVERSITY  
of EDINBURGH

**EDINBURGH**  
extraordinary futures await



# Internal Medicine

- Offered in partnership with the Royal College of Physicians of Edinburgh
- Designed for doctors in training by specialist doctors
- Provides a grounding in the discipline of Internal Medicine
- Preparation for the Royal College of Physicians exam - complement and expand upon the MRCP curriculum



## CORE COURSES

- Acute Medicine and Clinical Decision Making,
- Clinical Skills Principles,
- Introductory and Generic Skills,
- Imaging in Medicine,
- Principles of Laboratory Medicine,
- Principles of Clinical Pharmacology,
- Science of Medicine

## ELECTIVES

Cardiology, Diabetes and Endocrinology, Gastroenterology, Haematology, Neurology, Oncology, Palliative Care and Pain Management, Renal, Respiratory, Stroke (Cerebrovascular Medicine)

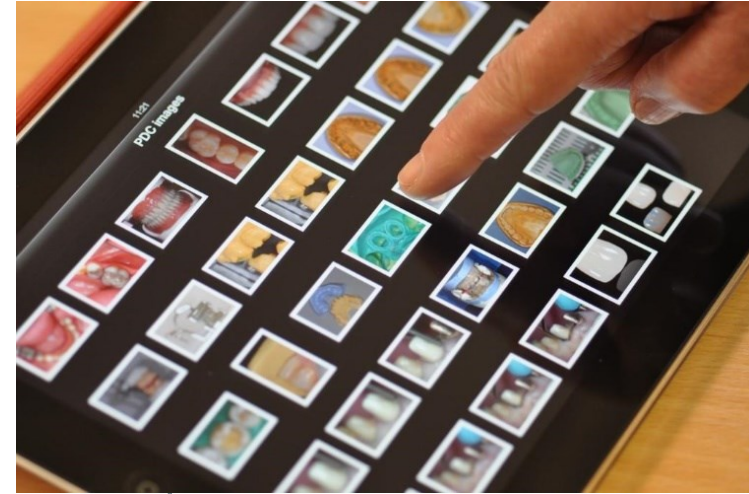


THE UNIVERSITY  
of EDINBURGH

**EDINBURGH**  
extraordinary futures await

# Restorative Dentistry

- Aimed at general dental practitioners who want to enhance their practice and keep up with developments
- Enhance your practice- build an international network
- Each course will provide a review of current literature supporting the topic, an update of knowledge and an opportunity to practice specific clinical skills.



## CORE COURSES

- Clinical Evidence
- Dental Clinical Photography
- Oral Health Assessment & Diagnosis
- Management of Occlusion
- Treatment Planning
- Prevention & Management of Dental Caries
- Restorative dentistry
- Endodontics
- Periodontal Management

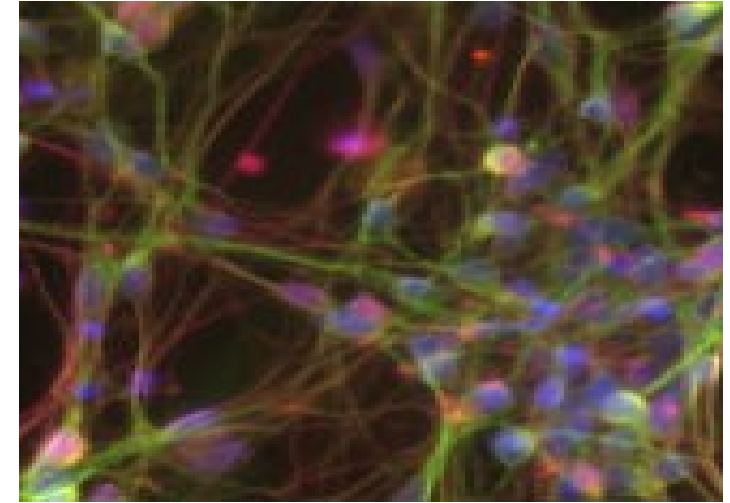


THE UNIVERSITY  
of EDINBURGH

**EDINBURGH**  
extraordinary futures await

# Stem Cells & Translational Neurology

- A thorough introduction to the fields of neurodegenerative diseases, stem cells, industry and emerging therapeutic opportunities in regenerative / translational neurology.
- Students learn about the impact of neurological disease from scientists, but also patients and their carers
- Designed for medical and/or scientific professionals



## YEAR 1 COURSES

- Key Research Skills to Explore the Central Nervous System and Stem Cells
- Introduction to Neurodegenerative Diseases and Models
- Uses of Stem Cells in Neurodegeneration
- Neuroimaging research for graduate neuroscientists



THE UNIVERSITY  
of EDINBURGH

**EDINBURGH**  
extraordinary futures await

# Information

- <https://www.ed.ac.uk/studying/postgraduate/applying/choosing-a-postgraduate-degree>

Edinburgh Medical School – Clinical Sciences

- <https://www.ed.ac.uk/studying/postgraduate/degrees/index.php?r=site%2FbySchool&edition=2021&school=22>

Online learning in College of Medicine:

- <https://www.ed.ac.uk/medicine-vet-medicine/postgraduate/online-learning-study>



THE UNIVERSITY  
of EDINBURGH



# Any questions?

It is perhaps easiest to type your question into the chat – and / or you can also indicate if you ‘like’ another question

Postgraduate Admissions team at  
[futurestudents@ed.ac.uk](mailto:futurestudents@ed.ac.uk)



THE UNIVERSITY  
of EDINBURGH