



THE UNIVERSITY of EDINBURGH
The Royal (Dick) School
of Veterinary Studies

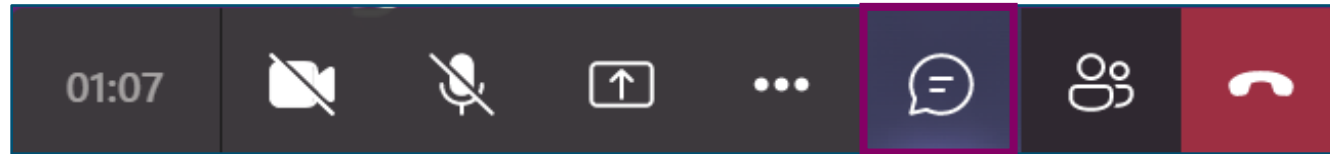
An Introduction to One Health

Lian Thomas | 21 May 2025

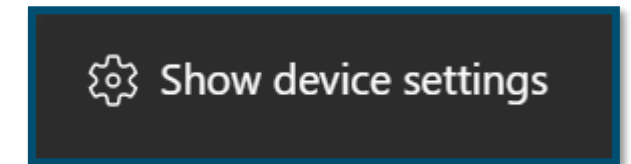
EDINBURGH
extraordinary futures await

Audio check

- Can you hear the presenter speaking?
- Please type “**no**” in the Chat area if you cannot hear the presenter



- If you can't hear:
 - Check your settings by clicking on the three little dots on the options bar and then 'show device settings'. Here you can check and change your speakers.
 - Try signing out and signing back into the session
 - Don't worry, the session is being recorded

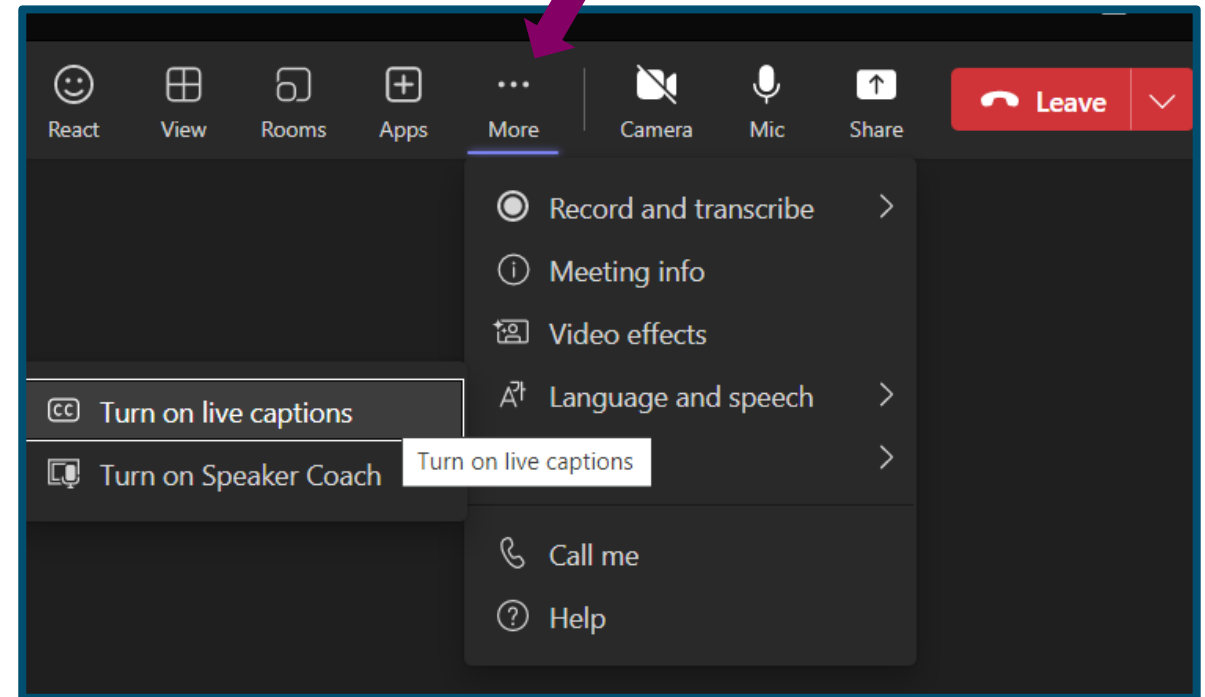


Live captions

You can turn on automated live captions as follows:

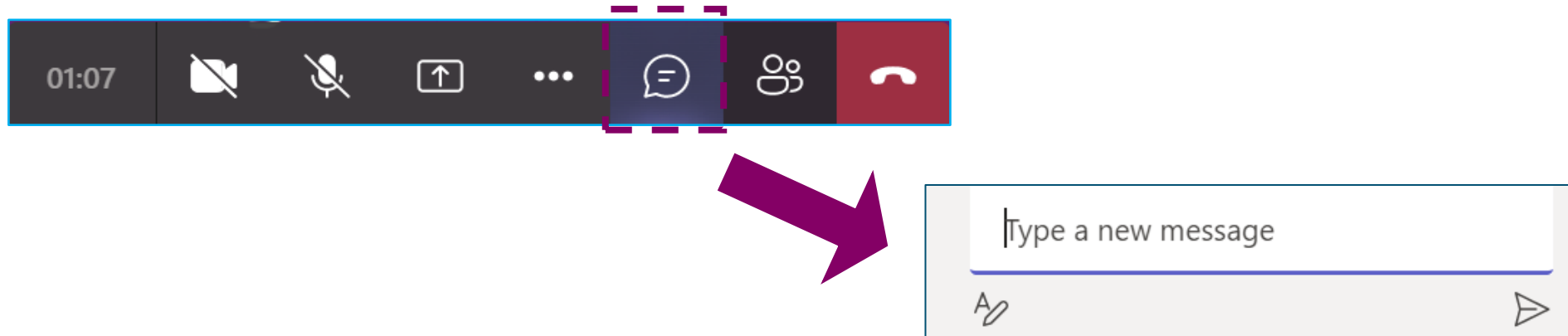
- More > Language and speech > Turn on live captions

These are automated therefore won't be 100% accurate



Asking questions

- Please hold all questions until the end of the formal presentation
- Type your question into the Chat Area



Recording



- Today's session is being recorded
- Any information that you provide during a session is optional and in doing so you give us consent to process this information
- If you don't want your question or name read out in public, you can email your question to futurestudents@ed.ac.uk
- Please note - a few attendees' names may be visible in the recording, if it is important that your name not be visible in the recording, please exit the session and re-enter using an incognito browser and typing in a pseudonym for yourself
- The session will be stored by the University of Edinburgh and published on our website after the event on a non-indexed web page
- ***You will be emailed with a link to watch the session recording by the end of next week***





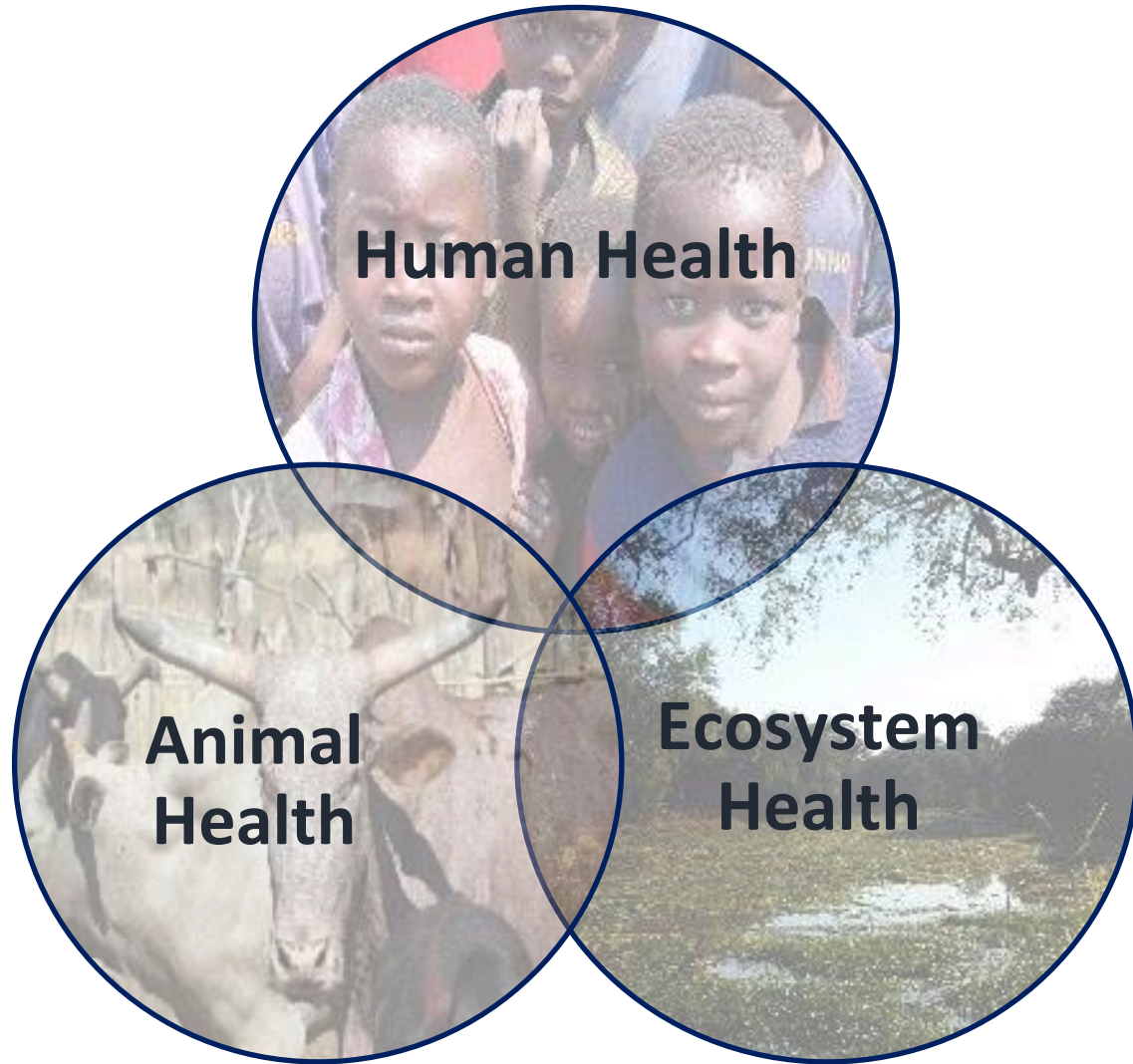
THE UNIVERSITY of EDINBURGH
The Royal (Dick) School
of Veterinary Studies

An Introduction to One Health

Lian Thomas | 21 May 2025

EDINBURGH
extraordinary futures await

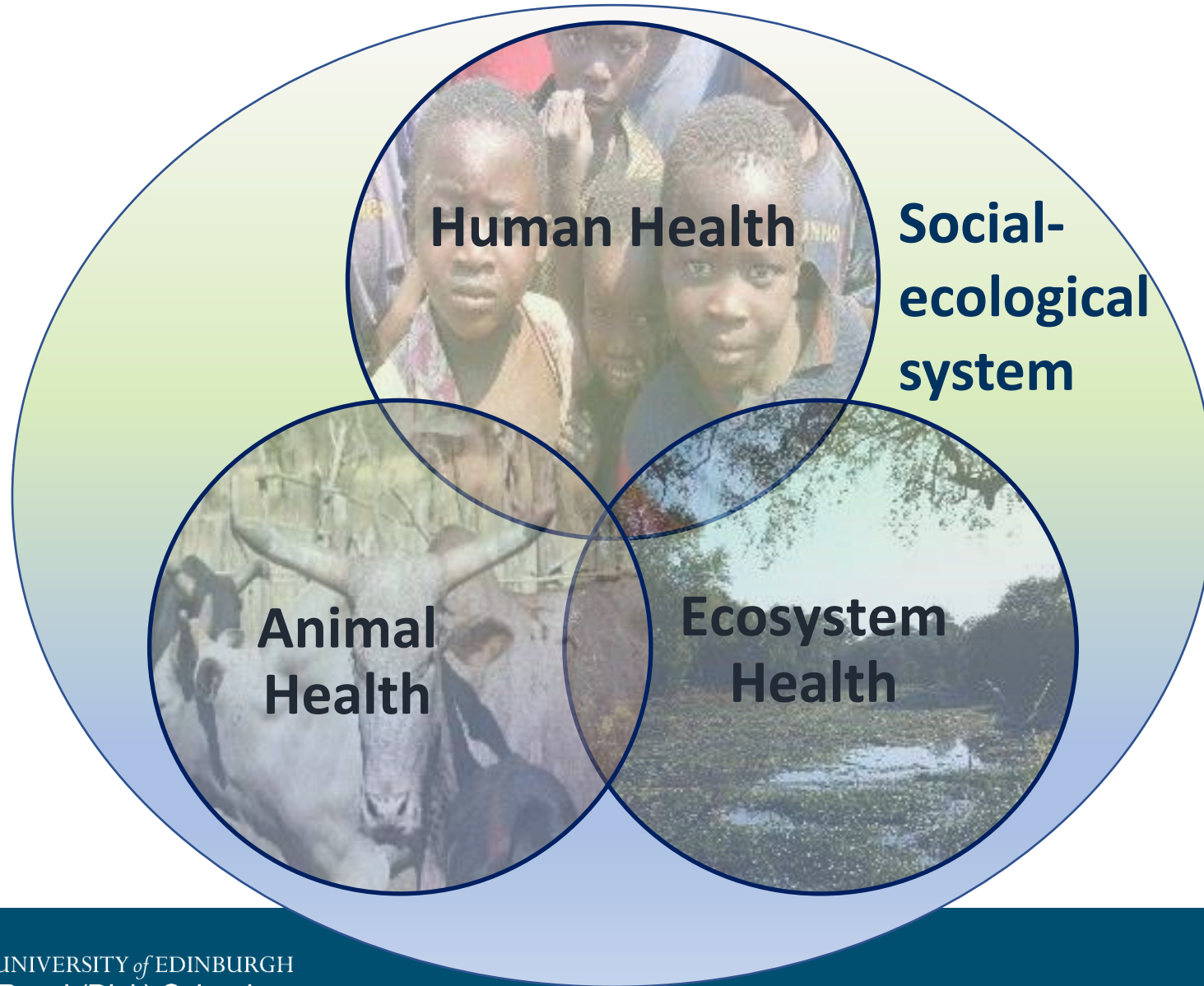
What is One Health?



The health of humans and animals is connected to the ecosystems in which they live



What is One Health?



Health in social-ecological systems

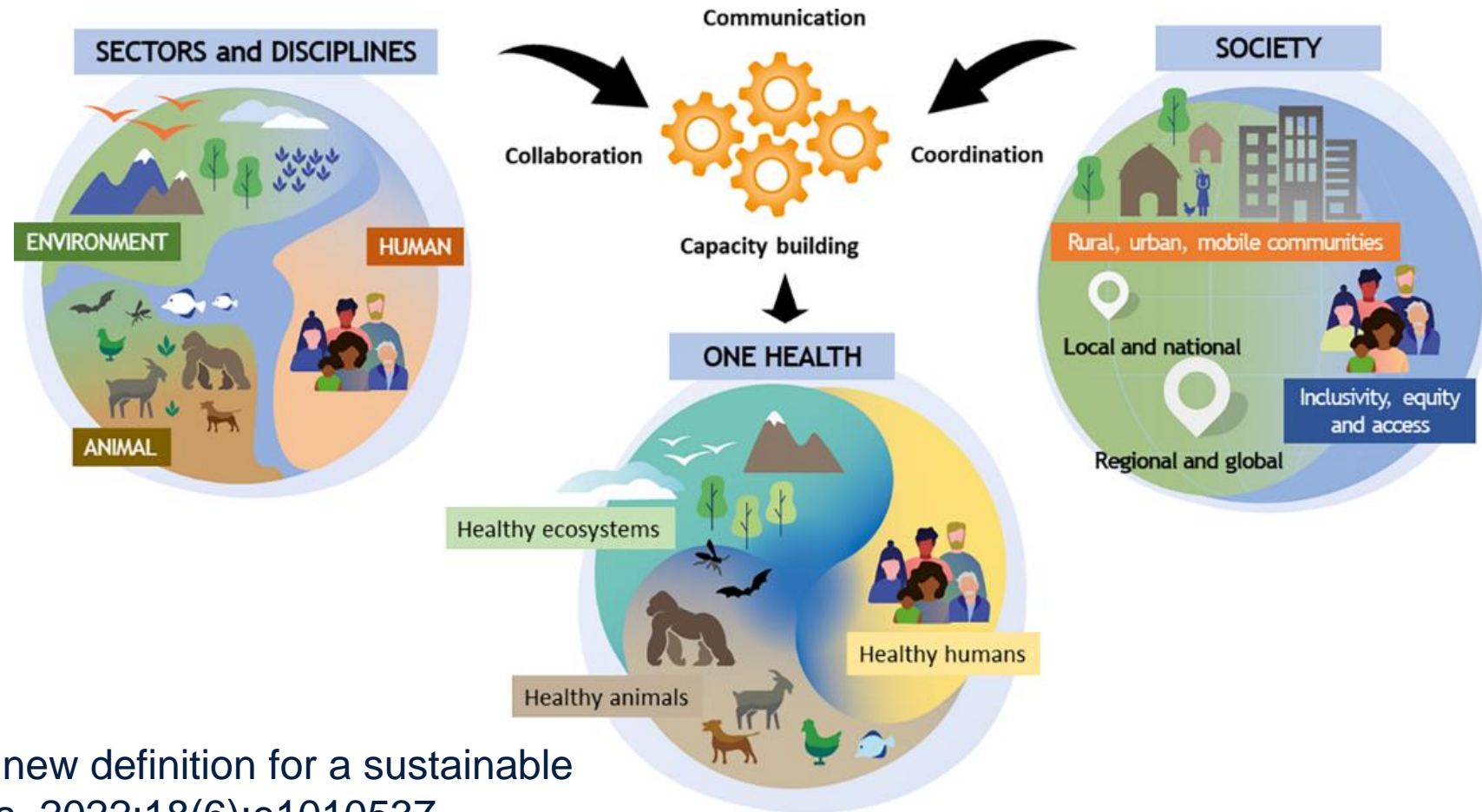


THE UNIVERSITY of EDINBURGH
The Royal (Dick) School
of Veterinary Studies

EDINBURGH
extraordinary futures await

OHHLEP Definition of One Health – 4Cs

“One Health is an integrated, unifying approach that aims to sustainably balance and optimize the health of people, animals and ecosystems”



Adisasmito WB et al. One Health: A new definition for a sustainable and healthy future. PLOS Pathogens. 2022;18(6):e1010537.



THE UNIVERSITY of EDINBURGH
The Royal (Dick) School
of Veterinary Studies

EDINBURGH
extraordinary futures await

21st Century Health Challenges

- Global drivers of disease emergence
- Profound ecological change
- Complex health challenges
- Entrenched barriers to collaboration – ‘silos’



Royal (Dick) School of Veterinary Studies



THE UNIVERSITY of EDINBURGH
The Royal (Dick) School
of Veterinary Studies

<https://qrs.ly/mbbhoxu>

EDINBURGH
extraordinary futures await

Mission Statement

The MSc One Health is an innovative, transdisciplinary programme that will equip and inspire you to work across disciplines to address complex health challenges



Image © Noreen Machila



THE UNIVERSITY of EDINBURGH
The Royal (Dick) School
of Veterinary Studies

EDINBURGH
xtraordinary futures await

Programme Team



Programme Director
Neil Anderson



Deputy Programme Director
Lian Thomas



Programme Coordinator
Glen Cousquer



Lecturer
Deborah Hoyle



E-learning Developer
Brian Mather



Student Advisor
Celeste de Blois



Programme Coordinator
Marie Rowland



Programme Administrator
Michael Winpenny



THE UNIVERSITY of EDINBURGH
The Royal (Dick) School
of Veterinary Studies

EDINBURGH
extraordinary futures await

Programme Structure

- Online
- Part-time intermittent study
- 10-20 hours per week
- Three terms per academic year
- PPD, Certificate, Diploma and MSc

<http://www.ed.ac.uk/vet/one-health>



Certificate Courses – 60 credits

Compulsory Courses

An Introduction to One Health (20 credits)

Ecosystem Health (10 credits)

One Health Policy (10 credits)

Applied Epidemiology and Surveillance for Conservation Medicine

Or

Applied Veterinary Epidemiology

Or

Applied Epidemiology and Public Health



Diploma Courses – 60 credits from:

Innovative Approaches to Health Challenges Across Disciplines

Antimicrobial Resistance: A One Health Perspective

Transboundary Diseases

Pastoralism and Herd Health

Scientific Paradigms, Research Approaches and Study Design across Disciplines

Managing and Leading Conservation Projects

GIS and Spatial Data Analysis

Non-communicable Disease in a Global Context

Zoonotic Diseases: A One Health Perspective

Wildlife Disease Management

Emerging Infectious Diseases

Ecosystem Resilience and Extreme Events

One Health Risk Communication and Preparedness

Captive and Free-Ranging Wild Animal Welfare

Water and Sanitation

Connecting Environment & Society

The Marine Environment



THE UNIVERSITY of EDINBURGH
The Royal (Dick) School
of Veterinary Studies

EDINBURGH
extraordinary futures await

MSc Dissertation

- Research project
 - Empirical research project
 - Literature review
- Assessments
 - Thesis or publication
 - Reflective account
 - Presentation

Open Access Review

Dogs (*Canis familiaris*) as Sentinels for Human Infectious Disease and Application to Canadian Populations: A Systematic Review

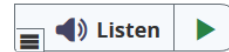
by Natasha H. Bowser  and Neil E. Anderson *  

The Royal (Dick) School of Veterinary Studies and the Roslin Institute, University of Edinburgh, Roslin EH25 9RG, UK

* Author to whom correspondence should be addressed.


Vet. Sci. 2018, 5(4), 83; <https://doi.org/10.3390/vetsci5040083>

Received: 13 August 2018 / Revised: 18 September 2018 / Accepted: 18 September 2018 / Published: 21 September 2018

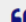


Research Article

Risk factors for *Brucella* spp. and *Coxiella burnetii* infection among small ruminants in Eastern India

Eithne Leahy , Rajeswari Shome, Ram Pratim Deka, Swati Sahay, Delia Grace, Stella Mazeri & ...show all

Article: 1783091 | Received 18 Oct 2019, Accepted 10 May 2020, Published online: 23 Jun 2020

 Download citation

 <https://doi.org/10.1080/20008686.2020.1783091>



THE UNIVERSITY of EDINBURGH
The Royal (Dick) School
of Veterinary Studies

EDINBURGH
extraordinary futures await

Course Materials – delivered via Learn Ultra

×

10.7.20

⌵

🌐

📅

📧

📄

📁

↶

Drive

VESC110332023-4SV1SEM1

⚙️ Course Settings

An introduction to One Health (2023-2024)[SEM1]

Content

Calendar

Announcements

Discussions


Gradebook

Messages


Analytics

Groups


👁️ Student Preview



Course Staff



Neil Anderson
INSTRUCTOR



Glen Cousquer

Course Content

📄

Welcome and Course Information

👁️ Visible to students ▾

⋮

⌵

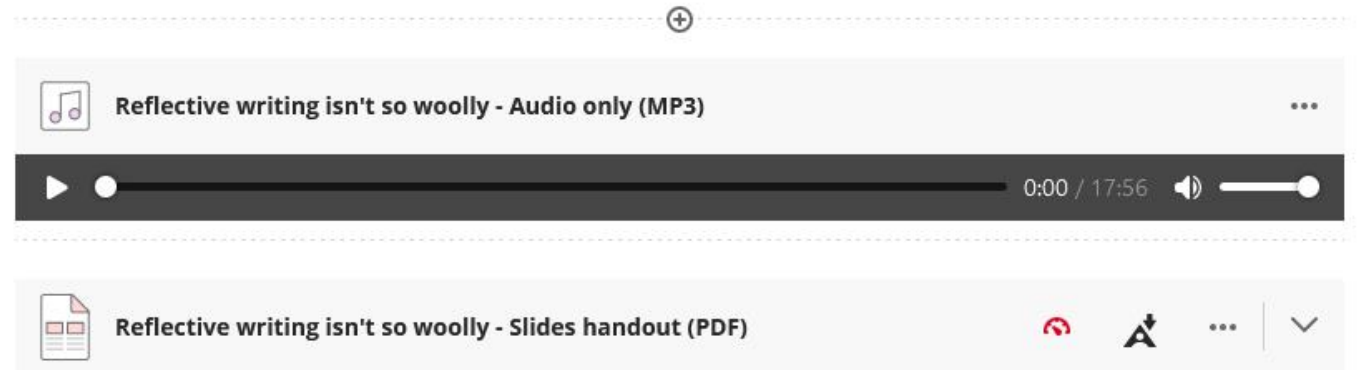
?

THE UNIVERSITY of EDINBURGH
The Royal (Dick) School
of Veterinary Studies

EDINBURGH
xtraordinary futures await

Course Materials

- Recorded presentation
- Reading list
- Discussion forums
- Live discussion / tutorial
- Additional activities
 - Individual
 - Group



Entry Requirements

- Veterinary Medicine / Science
- Medicine
- Life/biological sciences
- Biomedical sciences
- Economics
- Environmental sciences
- Social sciences



A UK 2:1
degree (or
equivalent)

onehealth@ed.ac.uk



THE UNIVERSITY of EDINBURGH
The Royal (Dick) School
of Veterinary Studies

EDINBURGH
xtraordinary futures await

What do our Students Say?

“I feel as though this programme has allowed me to begin moving my career from private veterinary practice to veterinary public health and international development”

“This program opened my eyes to look in a broader view to health issues. Worldwide animal, human and ecosystem health are linked together in so many ways”

“Knowing more about One Health and the confidence it gave me, helped me in the second year to successfully apply for a traineeship at the European Medicines Agency”



Further Information on our Website

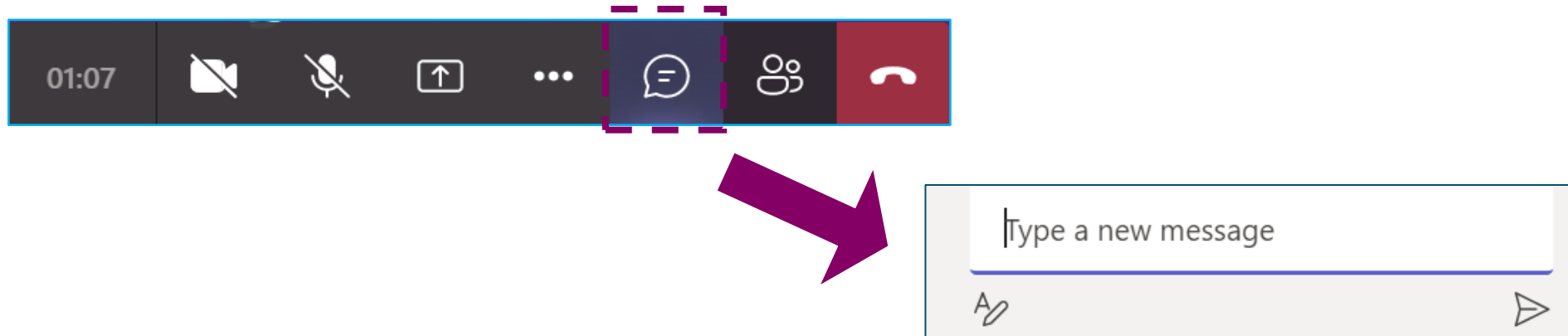
- Why study this programme?
- Qualifications
- Course structure and content
- Teaching team
- Testimonials
- Fees and Funding
- Equality and diversity

<http://www.ed.ac.uk/vet/one-health>



Any Questions?

- Please hold all questions until the end of the formal presentation
- Type your question into the Chat Area



Contact details for follow-up questions

We apologise if we did not get through all of your questions in the time allotted for this session.

If you have further questions that have not been answered, please email:

onehealth@ed.ac.uk



THE UNIVERSITY of EDINBURGH
The Royal (Dick) School
of Veterinary Studies

EDINBURGH
xtraordinary futures await



THE UNIVERSITY *of* EDINBURGH
The Royal (Dick) School
of Veterinary Studies

Thank you

Lian Thomas

Email: Lian.Thomas@ed.ac.uk