

Postgraduate Online Learning Open Days 2025

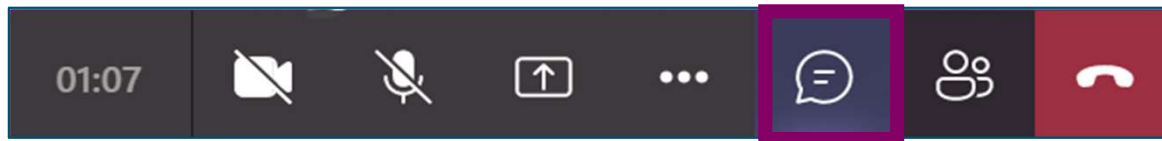
Introduction to Master of
Public Health (online part-
time)

Thursday, May 22nd, 1pm (BST)

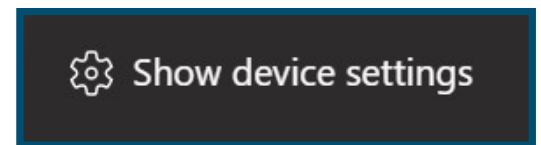


Audio check

- Can you hear the presenter speaking?
- Please type “no” in the Chat area if you cannot hear the presenter



- If you can't hear:
 - Check your settings by clicking on the three little dots on the options bar and then 'show device settings'. Here you can check and change your speakers.
 - Try signing out and signing back into the session
 - Don't worry, the session is being recorded

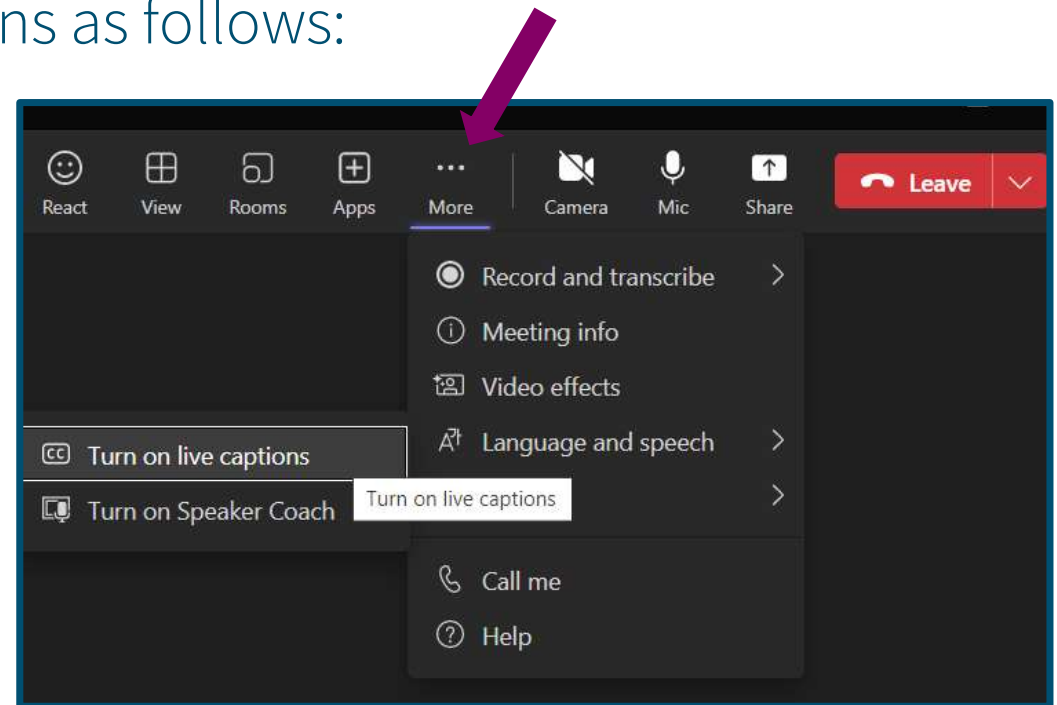


Live captions

You can turn on automated live captions as follows:

- More > Language and speech > Turn on live captions

These are automated therefore won't be 100% accurate



THE UNIVERSITY
of EDINBURGH

EDINBURGH
extraordinary futures await

Recording



- Today's session is being recorded
- Any information that you provide during a session is optional and in doing so you give us consent to process this information
- If you don't want your question or name read out in public, you can email your question to futurestudents@ed.ac.uk
- Please note - a few attendees' names may be visible in the recording, if it is important that your name not be visible in the recording, please exit the session and re-enter typing in a pseudonym for yourself
- The session will be stored by the University of Edinburgh and published on our website after the event on a non-indexed web page
- ***You will be emailed with a link to watch the session recording by the end of next week***



THE UNIVERSITY
of EDINBURGH

EDINBURGH
extraordinary futures await



Better health,
better futures

Online
Open Day
2025

Master of Public Health

How to begin or enhance your career in global public health
22 May 1pm



THE UNIVERSITY
of EDINBURGH

Uusher
institute

Postgraduate Teaching



Magda Mekky
TEACHING FELLOW



Dr Nynke Halbesma
CO-DIRECTOR



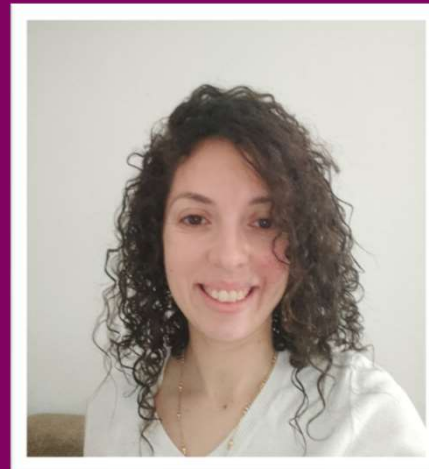
Dr Evgeniya Plotnikova
CO-DIRECTOR



Dr Debbie Cavers
Lecturer



Eldad Agyei-Manu
ALUMNUS



Catherine Abdelsayed
YR 2 STUDENT

MPH part-time online

- Hosted within the Teaching Organisation of the Usher Institute (Edinburgh Medical School from 1st of August)
- Online MPH programme since September 2015 and part-time
- Programme Accreditation awarded by APHEA* in January 2021
- Generalist award in public health

<https://www.ed.ac.uk/molecular-genetic-population/mph/online>

- Overall student satisfaction >90% since 2022 (based on PTES** survey)



*Agency for Public Health Education Accreditation

Who is this programme for?

Our programme is aimed at candidates with a background in:

- Medicine
- Nursing
- Veterinary medicine
- Pharmacy
- Health and social sciences
- Social policy
- Other related disciplines

Entry requirements:

- An undergraduate degree with an excellent or very good classification (equivalent to a first or upper second-class honours degree in the UK)
- An academic reference (headed, signed, dated)
- An English language certificate which meets the minimum entry requirements (unless you are a national of a majority English-speaking country)

Online learning tailored to you

- **flexibility** to study when it is most convenient for you
- **study from anywhere** with an Internet connection
- **live sessions** in each course (also recorded)
- **diverse list of elective courses**
- **dissertation or a student-led project of your choice**
- **access to all University services** and academic support
- rich and diverse **online community** of professionals in your field



Scholarships



- Large numbers of applicants for very few scholarships
- Please note that we cannot comment on individual applications in this session
- **The Commonwealth Distance Learning Scholarship: deadline 20 May 2025**
<https://registryservices.ed.ac.uk/student-funding/postgraduate/e-learning/common-distance-learning>
- **The Glenmore Medical Online Postgraduate Scholarship: deadline 29 May 2025**
<https://registryservices.ed.ac.uk/student-funding/postgraduate/e-learning/glenmore>
- **Edinburgh Global Online Learning Scholarships for Refugees and Displaced Students: deadline TBC; the instructions on how to apply will appear shortly here**
<https://registryservices.ed.ac.uk/student-funding/postgraduate/e-learning/online-masters>
- If your application is successful, you will be contacted. Please do not contact the MPH (online) teaching team for updates on your application process as we do not have access to this information

Year 1 timetable

	Term 1		Term 2		Term 3	
	Block 1	Block 2	Block 3	Block 4	Block 5	Block 6
1 st year students	Introduction to Public Health (10 cr)	Introduction to Health Promotion (10 cr)	Introduction to Epidemiology and Statistics (20 cr)		Epidemiology for Public Health Practice (10 cr)	Public Policy for Health (10 cr)

Year 2 timetable

	Term 1		Term 2		Term 3	
	Block 1	Block 2	Block 3	Block 4	Block 5	Block 6
2 nd year students	Introduction to Qualitative Research Methods (10 cr)	Systematic Reviews (10 cr)	Research Design for Public and Global Health (10 cr)	Students choose 30 credits worth of courses from a range of options		



Elective courses

Subject-specific

- Introduction to Global Mental Health
- Migration and Health
- Noncommunicable Disease in a Global Context
- Maternal, Newborn and Child Health in a Global Context
- Public health approaches to declining health, dying & bereavement
- Global Challenges in Healthy Ageing
- Fundamental of health economics
- Foundations of nutritional epidemiology

*More electives available from other UoE programmes

Advanced methods

- Intermediate/Applied Epidemiology
- Data Analysis for Epidemiology
- Statistical Modelling for Epidemiology
- Qualitative interviewing and data analysis for public health

Transferrable skills

- Leadership and Management in Public Health
- Governance and financial management for public health projects
- Innovative approaches to health challenges across disciplines
- Implementation science: putting evidence-based interventions into practice

Year 3

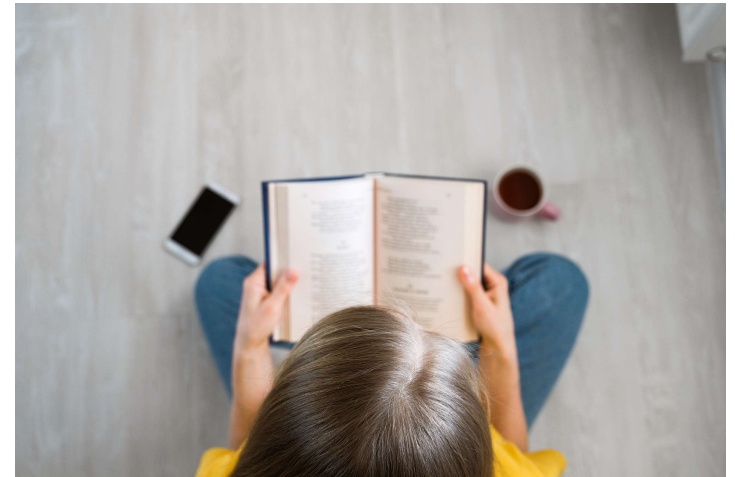
Students can choose to do:

- 60 credit dissertation project

OR

- 40 credits of elective courses **plus** a 20-credit Student-led individually Created Course (SLICC) which integrates your learning

SLICC is a mini-project, similar to a capstone project but with a focus on reflective learning



Catherine Abdelsayed (Year 2 student)

- My current professional role
- How I have applied the knowledge and skills from the programme in my current position
- My advice to prospective students



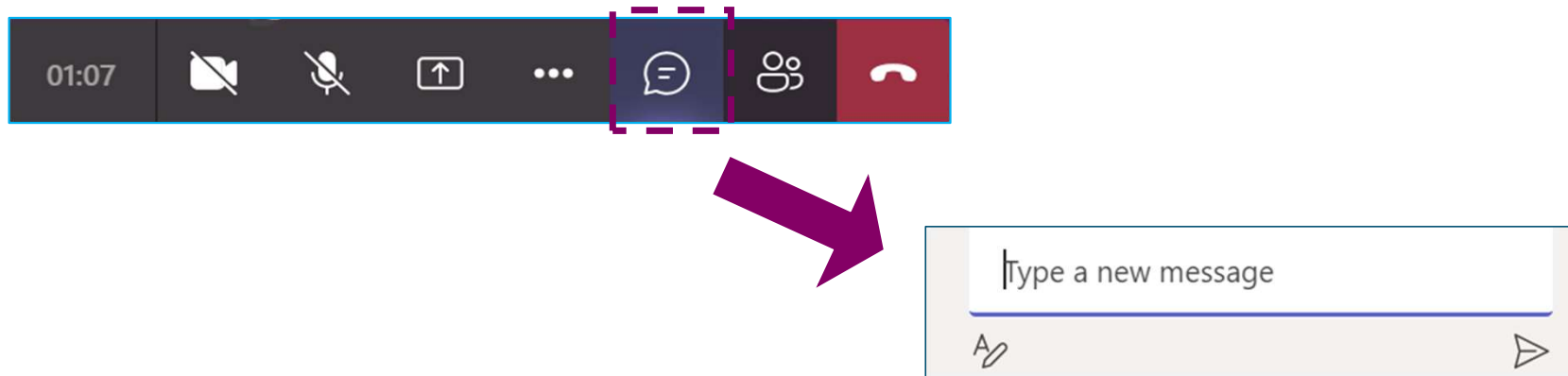
Eldad Agyei-Manu (alumnus)

- My current professional role
- How I have applied the knowledge and skills from the programme in my current position
- My advice to prospective students



Over to you and your questions

- Type your question into the Chat Area



THE UNIVERSITY
of EDINBURGH

EDINBURGH
extraordinary futures await

Contact details for follow-up questions

If you have any questions in the future, please email:

- futurestudents@ed.ac.uk

More information about our programme is available on our website:

- www.ed.ac.uk/molecular-genetic-population/mph/online



THE UNIVERSITY
of EDINBURGH

EDINBURGH
extraordinary futures await



THE UNIVERSITY
of EDINBURGH

Thank you



We do hope you join us!

EDINBURGH
extraordinary futures await