



THE UNIVERSITY of EDINBURGH
The Royal (Dick) School
of Veterinary Studies

An introduction to International Animal Welfare, Ethics and Law

Wendy Watson | 21 May 2025

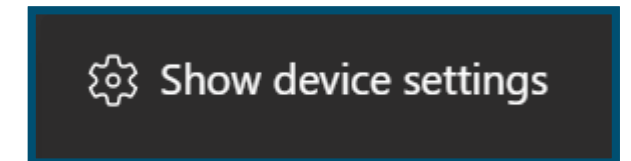
EDINBURGH
extraordinary futures await

Audio check

- Can you hear the presenter speaking?
- Please type “no” in the Chat area if you cannot hear the presenter



- If you can't hear:
 - Check your settings by clicking on the three little dots on the options bar and then 'show device settings'. Here you can check and change your speakers.
 - Try signing out and signing back into the session
 - Don't worry, the session is being recorded



Recording



- Today's session is being recorded
- Any information that you provide during a session is optional and in doing so you give us consent to process this information
- If you don't want your question or name read out in public, you can email your question to futurestudents@ed.ac.uk
- Please note - a few attendees' names may be visible in the recording, if it is important that your name not be visible in the recording, please exit the session and re-enter using an incognito browser and typing in a pseudonym for yourself
- The session will be stored by the University of Edinburgh and published on our website after the event on a non-indexed web page
- *You will be emailed with a link to watch the session recording by the end of next week*





THE UNIVERSITY of EDINBURGH
The Royal (Dick) School
of Veterinary Studies

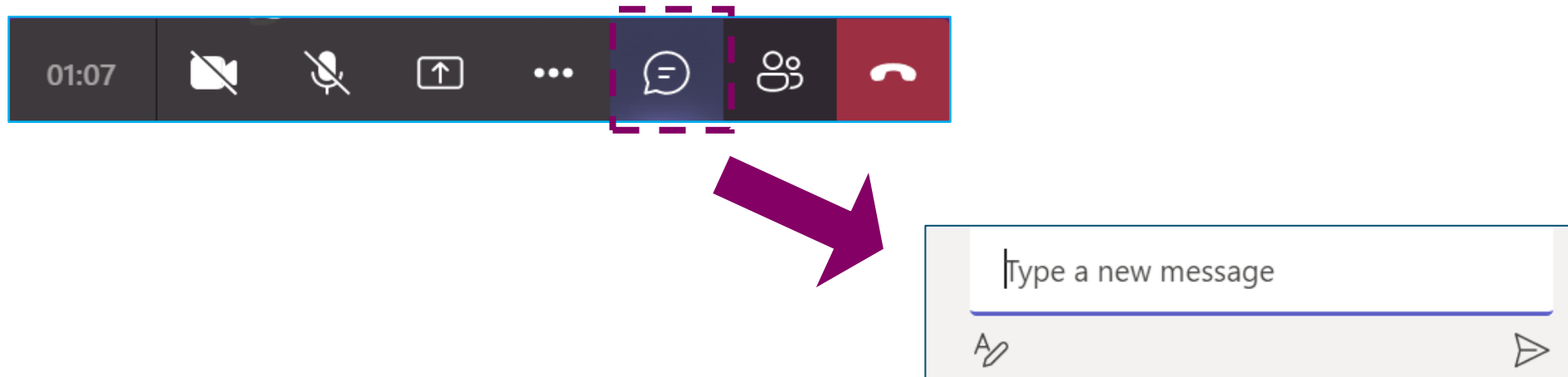
An introduction to International Animal Welfare, Ethics and Law

Wendy Watson | 21 May 2025

EDINBURGH
extraordinary futures await

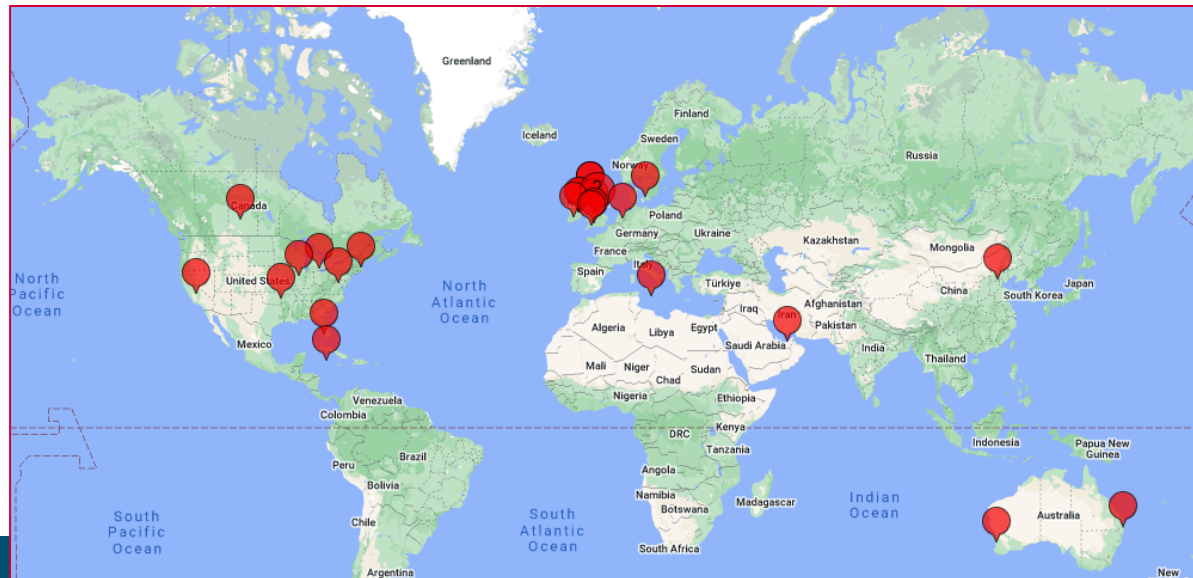
Asking questions

- Type your question into the Chat Area



Introduction to our Online MSc in International Animal Welfare, Ethics and Law (IAWEL)

- The programme started in 2012
 - Over 300 students from 30+ countries
- These include India, Vietnam, China, Malawi and Zimbabwe –all countries that have been difficult to reach via online



These were
our 2022-
2023 students



THE UNIVERSITY of EDINBURGH
The Royal (Dick) School
of Veterinary Studies

EDINBURGH
extraordinary futures await

Programme Delivery

- Delivered from September to June each year
- Each year consists of 3 teaching blocks of 10 weeks (plus 2 reading weeks)
- Certificate (Yr 1) / Diploma (Yr 2) /Masters (Yr 3) levels
- Flexible and intermittent options
- Can take over 3-6 years
- Alternatively, take just one or two courses as PPD



The banner features a white mouse being held in a blue nitrile glove. The background is a blurred image of a laboratory setting. The text is overlaid on the left side of the banner.

 THE UNIVERSITY of EDINBURGH
The Royal (Dick) School
of Veterinary Studies

Postgraduate | Online

Animal welfare from a
world-leading veterinary
education provider

Welfare of Animals Used for Scientific Purposes
Credit-bearing short course

EDINBURGH
xtraordinary futures await

edin.ac/WAUSP



THE UNIVERSITY of EDINBURGH
The Royal (Dick) School
of Veterinary Studies

EDINBURGH
xtraordinary futures await

What will you be studying? Core Courses

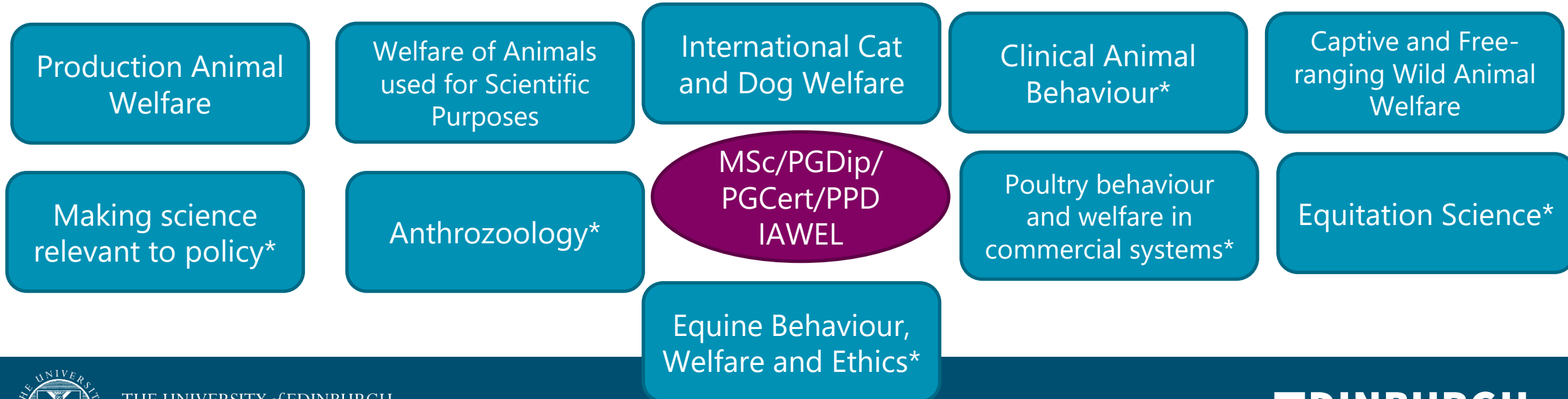
- International Animal Welfare Science (IAWS)
Animal Ethics, Policy and Law (AEPL) and Research Methods
and Data Analysis in IAWEL
- What is animal welfare?
 - A science that investigates and measures the experience of animals in our care all over the globe
 - The evidence basis to animal welfare
 - Animal behaviour, physiology, cognition and emotion
- The associated interdisciplinary areas of ethics, policy and law
 - These should rely on sound evidence
- Research methods and data analysis – preparation for the dissertation year the following September.



What else will you learn about? Electives

- You will apply knowledge gained in the core courses to your chosen electives
- Increases flexibility – students can build their own MSc

*Shared
with other
MScs in
R(D)SVS



How do we teach?

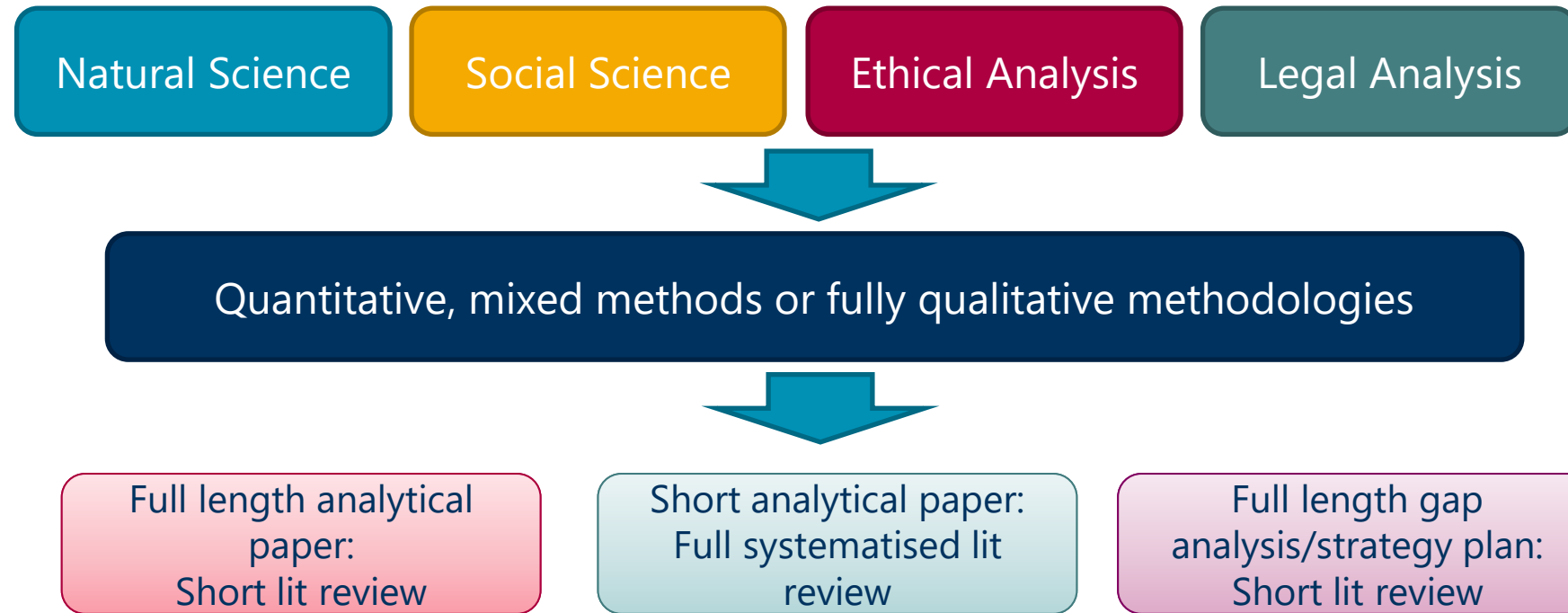
- Virtual Learning Environment (Blackboard Learn)



- Live lectures and discussions on Blackboard and Collaborate Ultra
 - Pre-recorded lectures
- Asynchronous discussion boards
 - Teams chats
- Extensive library and e-book provision

Online 'Multi-Model' Dissertations

- Our dissertation lasts from Sept to June (60 credits)



- Co supervised by experts from Edinburgh and International universities and organisations



Impact

- Graduate publications

Assessment of an Educational Intervention on the Knowledge and Attitudes of Indian National Veterinarians to Animal Welfare and Euthanasia

Emma L. Rayner ■ Ilona Airikkala-Otter ■ Heather J. Bacon ■ Hayley M. Walters ■ Luke Gamble ■ Fritha M. Langford

JVME 47(2) © 2020 AAVMC doi: 10.3138/jvme.0518-063r



Article

A Model for Consumer Acceptance of Insect-Based Dog Foods among Adult UK Dog Owners

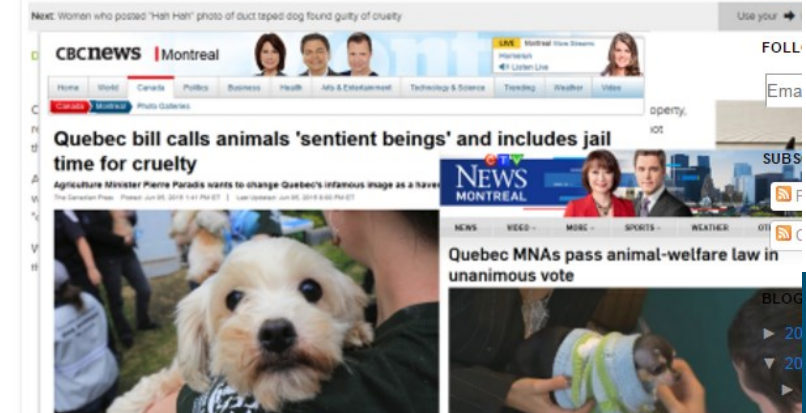
Joanne Pinney^{1,*} and Montserrat Costa-Font²

- Students influencing policy and education

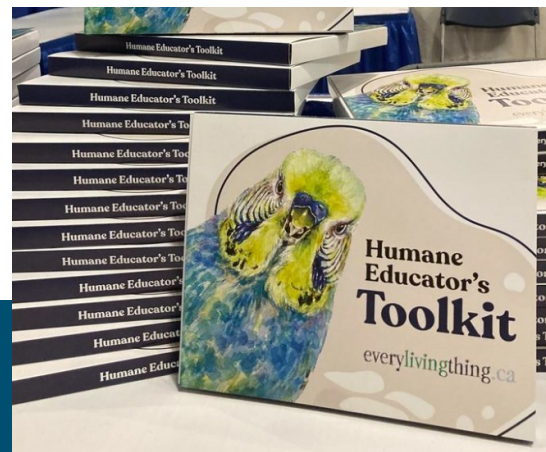
Online MSc IAWEL student Anik Boileau makes a difference in new Quebec animal welfare law

We are very pleased to report that the animal protection legislation has been updated in Quebec, Canada. Even more so as one of our [Online MSc International Animal Welfare Ethics and Law](#) students was directly involved. Anik Boileau took the brave step to offer her services and she worked on updating the legislation to include sentence as a key term to describe animals. We are very proud of the work she has done.

Happy day for animals - legislation passed declaring them as sentient beings



THE UNIVERSITY of EDINBURGH
The Royal (Dick) School
of Veterinary Studies



Entry Requirements

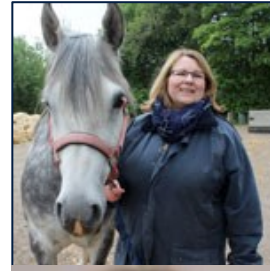
- Science degree at 2:1 or above
 - Veterinary Medicine
 - Life Sciences
 - Biological Sciences
 - Environmental Sciences
 - Social Sciences
- Please contact us to discuss if you don't meet these qualifications but have other relevant experience



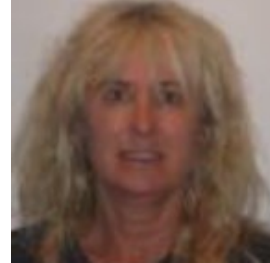
THE UNIVERSITY of EDINBURGH
The Royal (Dick) School
of Veterinary Studies

EDINBURGH
extraordinary futures await

Programme Team



Ms Wendy Watson,
Programme Co-ordinator



Dr Marie Rowland,
Programme Co-ordinator
(Part-time)



Mr Brian Mather,
Senior e-Learning Developer



Mr Stephen Mitchell,
Administrator



Contact details for follow-up questions

We apologise if we did not get through all of your questions in the time allotted for this session.

If you have further questions that have not been answered, please email:

IAWEL@ed.ac.uk





THE UNIVERSITY *of* EDINBURGH
The Royal (Dick) School
of Veterinary Studies

Thank you

The IAWEL Team
IAWEL@ed.ac.uk