

Welcome live and direct from Edinburgh!

Session will start at 6pm UK time

- Audio Check
- Recording of the session
- Presentation
- Question & Answer
- Contact Details
- Next Steps



THE UNIVERSITY
of EDINBURGH

Open to
the world

Recording



- Today's session is being recorded. Any information that you provide during a session is optional and in doing so you give us consent to process this information.
- ***You will be emailed with a link to watch all sessions by the end of next week.***
- These sessions will be stored by the University of Edinburgh for one year and published on a hidden web page, shared only with event registrants.
- Subject to consent, Schools or Services may use the recordings for up to a year on relevant websites.
- If you don't want your question or name read out in public, you can email your question to futurestudents@ed.ac.uk



Next steps...

- ☐ Attend live or watch the recording of our '**How to make an effective application**' session for guidance on applying to the University
- ☐ Hear what it's really like to study online at one of the Student and Graduate panel sessions
- ☐ If you have questions after the Online Learning Open Days, chat to our current students about their experience via the Unibuddy platform:



<https://www.ed.ac.uk/studying/postgraduate/student-life/student-chat>

Online Distance Learning Programme

MSc in Internal Medicine



THE UNIVERSITY
of EDINBURGH



ROYAL
COLLEGE *of*
PHYSICIANS *of*
EDINBURGH

POSTGRADUATE
ONLINE
LEARNING
**OPEN
DAYS**

MSc Internal Medicine

Dr Frances Parry
Deputy Programme Director



THE UNIVERSITY
of EDINBURGH



INTERNAL MEDICINE

A fully online programme offering the opportunity
to study at postgraduate level towards a
PG Certificate, Diploma or Masters

Online Distance Learning Programme

MSc in Internal Medicine



Royal Infirmary



Western General



McEwan Hall



Playfair Library

Welcome from all Programme Staff

- Professor Simon Maxwell – Programme Director
- Dr Frances Parry – Deputy Programme Director
- Programme Administrator
- Many clinical tutors from University and NHS



MSc in Internal Medicine

- Why was the Programme developed?
- Who should apply?
- What are we trying to achieve?
- What is the Programme structure?
- How will you learn?
- How will you be assessed?
- How can you apply?



Why was the Programme developed?

Development

- Partnership
 - Royal College of Physicians of Edinburgh
 - University of Edinburgh
- Originally designed for PG medical doctors
- First intake of students - September 2011
- First MSc graduates – November 2014



ROYAL
COLLEGE *of*
PHYSICIANS *of*
EDINBURGH



General outline

- Online distance learning (no campus teaching)
 - Flexibility for a mobile, busy workforce (part-time)
- Three exit stages
 - One year: Certificate – 60 credits
 - Two years: Diploma – 120 credits
 - Three years: Masters – 180 credits

*Recognition of Prior Learning (RPL) for a maximum of
60 credits for a master's degree
(and for 40 or 20 credits for a Diploma or Certificate)*

Who should apply?

Target learner groups

- Medical doctors and associated professions intending to pursue a career relevant to general medicine
 - practicing physicians in a medical specialty
 - other specialties (e.g. general practice, radiology, anaesthetics, advanced practitioners, paramedics, advanced pharmacists) who are keen to upgrade general medical skills
 - occasionally other non-medical degrees

Why join the Programme?

- Preparation for postgraduate examinations
 - MRCP
 - Other equivalent postgraduate qualifications
- Clinical reasons
 - Clinical knowledge and skills
 - Critical judgement in diagnostics and therapeutics
- Career skills
 - Research skills
 - Education and teaching
- Community
 - Global community of practice

Friendly like-minded community
Flexible learning to suit you
Teaching/mentoring by experts

Our students

Year	Students
1	85
2	57
3	40



What will you require?

Key programme requirements

- a medical (or associated/relevant) degree
 - relevant clinical experience
 - English language proficiency
 - access to suitable computing facilities
-
- *Time commitment – around 8 -12 hours/week*
 - *Enthusiasm*
 - *Spirit of enquiry*

What are we trying to achieve?

What are we seeking to provide?

- An outstanding educational experience (equivalent to local students)
- Feeling that you are part of the *University of Edinburgh* (and will remain so when you leave as an alumnus)
- Connection to the *Royal College of Physicians Edinburgh*
- An attitude to studying and practicing medicine (wherever you work) that stems from your time with us
- More than just a degree

Flexible to your needs

- Access to learning materials 24h/day (e.g. recorded tutorials and lectures)
- Choice of study for *PG Cert*, *PG Diploma* or *Masters* with option to change your mind
- Availability of electives from other University of Edinburgh Masters programmes (e.g. Clinical Education)
- Option to choose either a *research dissertation* or *taught elective* option in final year to gain Masters
- Option to take time out (interrupt studies) to focus on professional commitments

How is the Programme structured?

Modular structure

- Programme is a sequence of inter-related *taught modules*
 - Modules (10 credit courses) of 6 weeks duration
 - Online lectures/ interactive tutorials
 - Cases, discussion boards, resources
 - Assessment (week 6)
-
- **Year 1:** 5 compulsory modules (60 credits)
 - **Year 2:** 2 compulsory and 4 elective modules (60 credits)
 - **Year 3:** 2 compulsory and 4 elective modules (60 credits) *or* a dissertation (60 credits)

Week 1

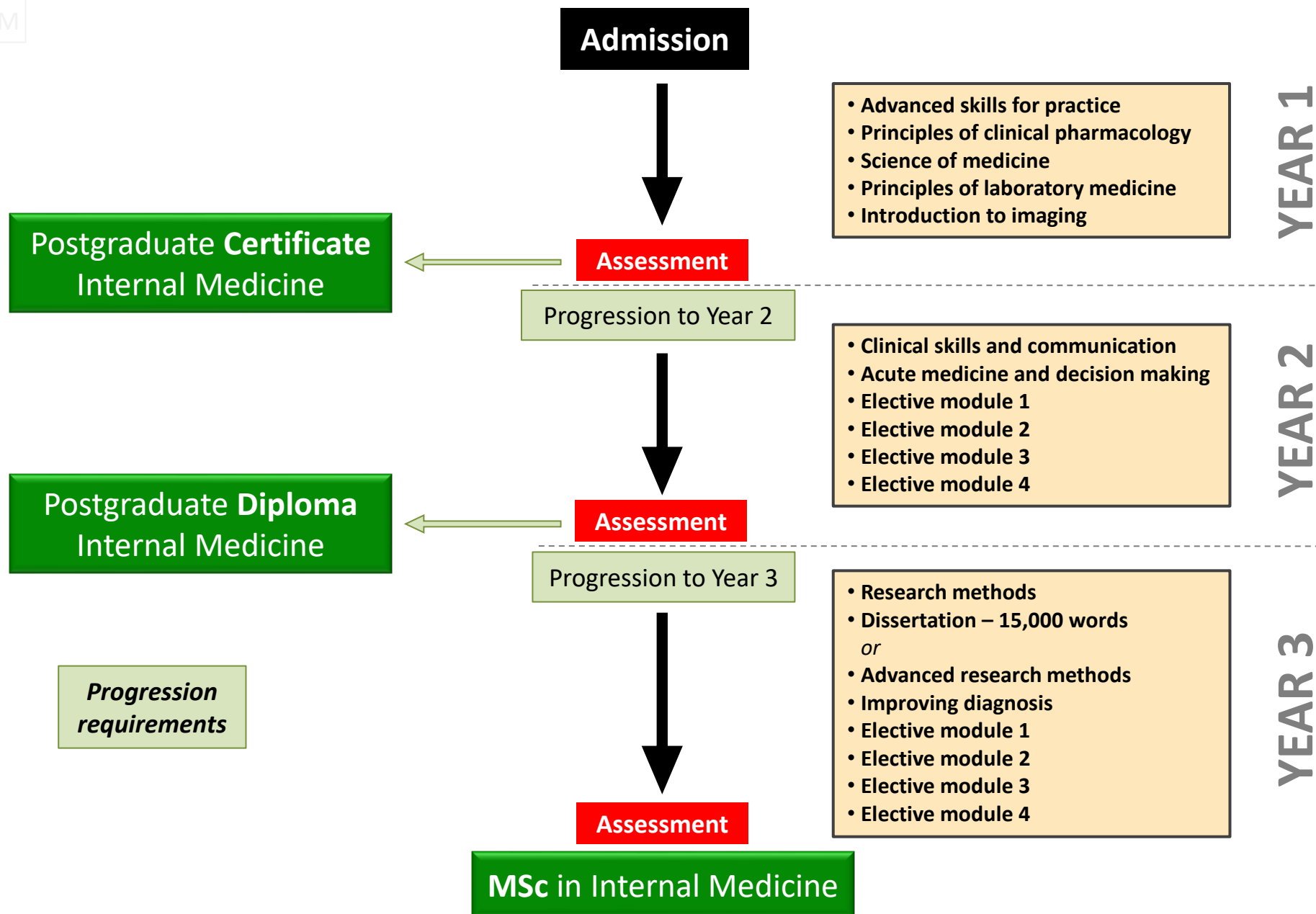
Week 2

Week 3

Week 4

Week 5

Week 6



Modules (courses)

CORE MODULES

- Principles of clinical pharmacology
- Science of medicine
- Principles of laboratory medicine
- Imaging in medicine
- Advanced Skills for practice

-
- Acute medicine and clinical decision making
 - Clinical skills
 - Examination
 - Communication
 - Procedures

-
- Improving diagnosis
 - Advanced research methods

ELECTIVE MODULES

- Cardiology
- Cerebrovascular medicine
- Clinical genetics
- Clinical education
- Clinical Psychiatry
- Diabetes and endocrinology
- Gastroenterology
- Haematology
- Intensive care
- Neurology
- Oncology
- Palliative care and symptom management
- Quality improvement/patient safety
- Renal medicine
- Respiratory medicine
- Rheumatology

How will you learn?

Learning areas

- Virtual learning environment - *Learn*
- Online tutorials – *Collaborate*
- Themed weekly material/resources
- Cases
- Discussion boards
- Online Library
- RCPE resources
- **Supported self-directed learning**

A blue rectangular button with rounded corners. On the left is a white icon of a square with an arrow pointing up and to the right. To the right of the icon, the text "Launch Learn" is written in white sans-serif font.



THE UNIVERSITY
of EDINBURGH



MSc in Internal Medicine



Welcome to the University of Edinburgh and to the MSc Programme in Internal Medicine. We are delighted that you have chosen to study with us and will do everything we can to ensure that you enjoy your time studying with us and value your experience over the next three years.

The aim of the Programme is to equip you with the knowledge and skills that enable you to practise medicine more effectively, for the benefit of your patients. This is a scientific degree that is intended to provide you with a deeper knowledge and understanding of the scientific concepts that underpin internal medicine and its related sub-specialties. We expect all of our graduates to be good clinicians who reflect on their practice and learn from it. We would like to help you to improve your diagnostic skills and prescribe medicines more effectively. Finally, we believe that all future clinicians need to be able to find and appraise relevant information available in a growing evidence base and be able to write and communicate effectively about the cases they see.



Announcements
Online lectures
Online tutorials
Contacts
Course schedule
Discussion boards
Learning resources
Links to library –
journals and books
Assessment

Online Lectures and Tutorials

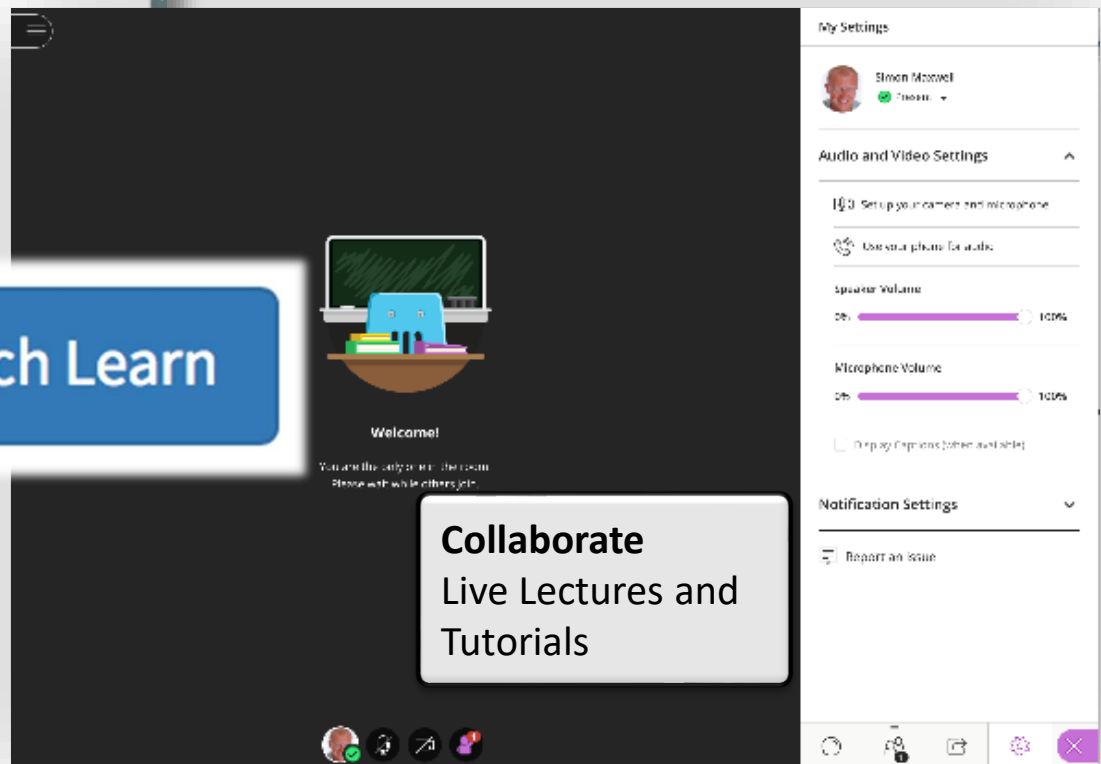
- Weekly
- Evening (UK time)

Transfusion

Angela Thomas
Paediatric Haematologist
Royal Hospital for Sick Children
Edinburgh

 Launch Learn

Live and Recorded





THE UNIVERSITY
of EDINBURGH

[Home](#)[Studies ▼](#)[Accounts ▼](#)[Student Life ▼](#)[Careers ▼](#)

Search and access library resources



Find ejournals, databases, ebooks, exam papers, theses and subject specific resources for your study and research.

Search DiscoverEd

Use DiscoverEd to find books, ebooks, ejournal articles and more

Library databases

The Library subscribes to a large number of online databases and resources. Browse them via the A-Z list, or organised by subject area.

- [Databases A-Z](#)
- [Databases by subject](#)
- [Help using Library databases](#)

Subject guides

Subject guides provide information on using the library resources, services and facilities for a particular subject.

An Academic Support Librarian is assigned to each subject, and can help with literature searching, getting hold of reading material you know you want, library-related aspects of systematic reviews or on referencing.

- [Subject guides](#)





ROYAL
COLLEGE *of*
PHYSICIANS *of*
EDINBURGH

Royal College of Physicians



ROYAL
COLLEGE of
PHYSICIANS of
EDINBURGH

- The College supports you to deliver the highest standards of healthcare to patients.
- We help doctors to pursue their careers in specialist (internal) medicine through medical examinations, education and training.
- We provide resources and information for professional development for physicians.



Educational resources



ROYAL
COLLEGE *of*
PHYSICIANS *of*
EDINBURGH

- Specialty modules-CPD approved, interactive, self-assessment and certificates
- Challenging cases-interactive, self-assessment, certificates
- From Symposia-selected symposium lectures, self-assessment, certificates
- Evening Medical Updates-all lectures
- Professional & Clinical Practice-lectures from career events, including PACES preparation
- RCPE Education Portal - <http://learning.rcpe.ac.uk>



How will you be assessed?

Assessment

- Multiple Choice Questions (common form in Year 1)
- Written assignments
- Cases
- Discussion boards
- Posters

A blue rectangular button with rounded corners. On the left is a white icon of a document with an upward-pointing arrow. To the right of the icon, the text "Launch Learn" is written in white, sans-serif font.

How much does it cost?

Study fees

- £6,370/year for 2025/2026
- Deposit payment before entry and associated documents (refs, degree, transcript, proof of English)
- Scholarship schemes
 - RCPE Scholarships
 - Internal Medicine Scholarships
 - Various other UoE scholarships

Where can I find further information?



INTERNAL MEDICINE



Career impact:

https://media.ed.ac.uk/media/1_904lsw60

Online distance programme – MSc in Internal Medicine

THE UNIVERSITY of EDINBURGH
Edinburgh Medical School



ROYAL
COLLEGE of
PHYSICIANS of
EDINBURGH



INTERNAL MEDICINE



THE UNIVERSITY
of EDINBURGH



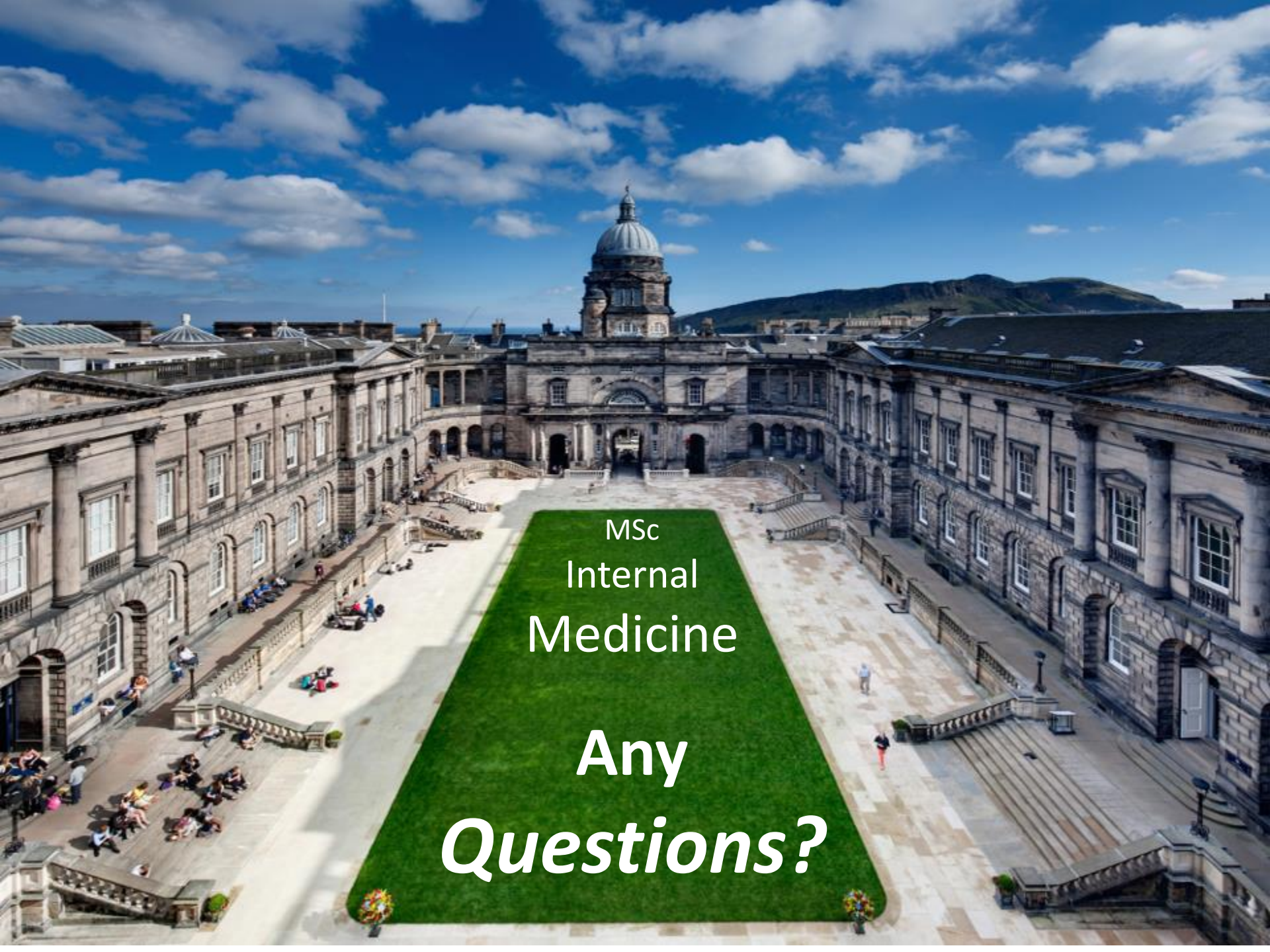
THE UNIVERSITY of EDINBURGH
Edinburgh Medical School

Online distance programme – MSc in Internal Medicine

programme:
https://media.ed.ac.uk/media/1_v2tkizce



ROYAL
COLLEGE of
PHYSICIANS of
EDINBURGH



MSc
Internal
Medicine

Any
Questions?

Further information

MSc in Internal Medicine

- Our webpages <https://clinical-sciences.ed.ac.uk/internal-medicine>
- Application pages <https://postgraduate.degrees.ed.ac.uk/?id=692&r=site/view&edition=2025>
- Any questions please email the team at internal.medicine@ed.ac.uk



Next steps...

- ☐ Attend live or watch the recording of our '**How to make an effective application**' session for guidance on applying to the University
- ☐ Hear what it's really like to study online at one of the Student and Graduate panel sessions
- ☐ If you have questions after the Online Learning Open Days, chat to our current students about their experience via the Unibuddy platform:



<https://www.ed.ac.uk/studying/postgraduate/student-life/student-chat>