



THE UNIVERSITY of EDINBURGH
The Royal (Dick) School
of Veterinary Studies

An Introduction to Conservation Medicine

Neil Anderson | 22 May 2025

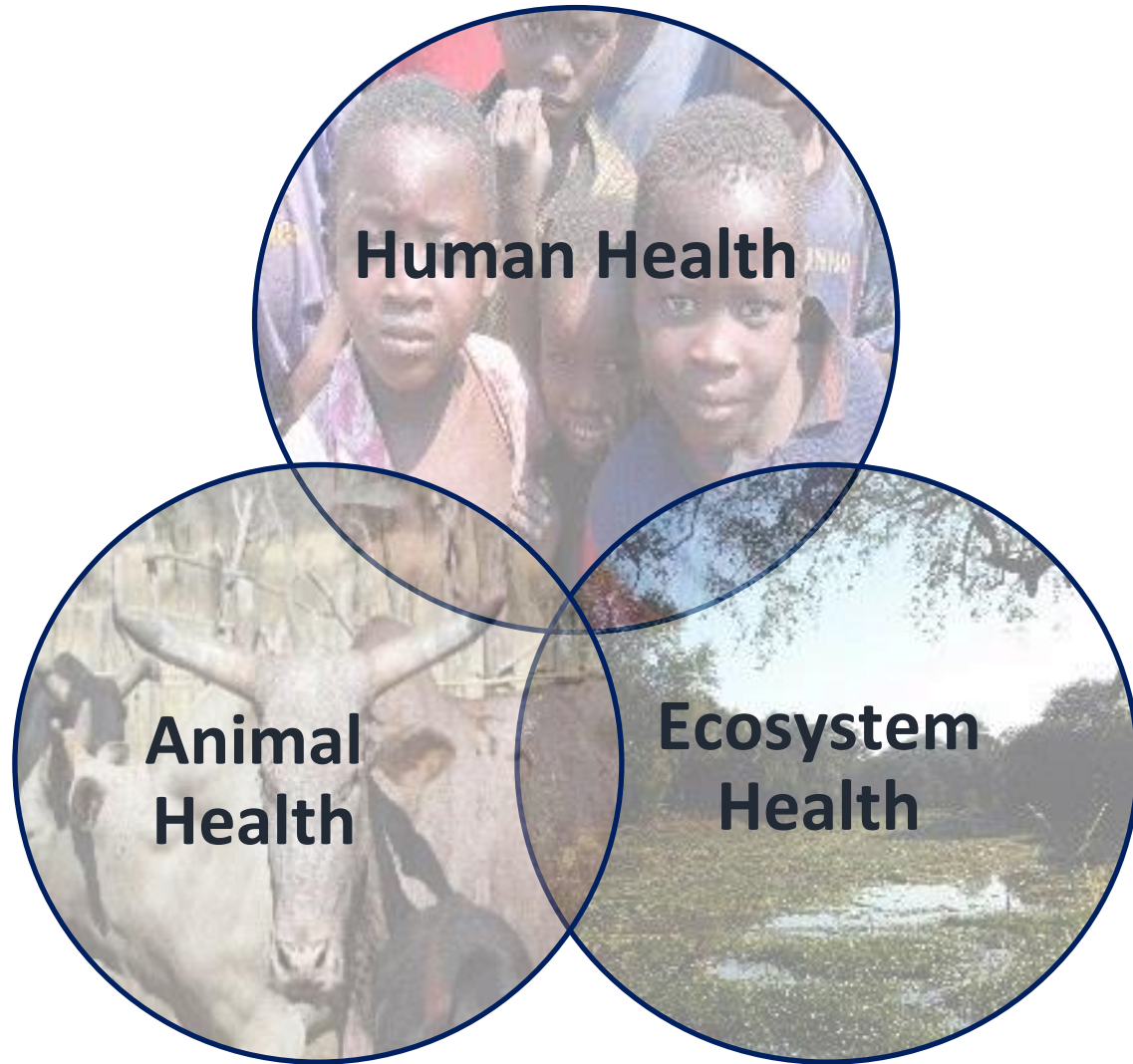
EDINBURGH
xtraordinary futures await

What is Conservation Medicine?

- An ecological approach to health across all species
- Interdisciplinary or transdisciplinary approach



What is Conservation Medicine?



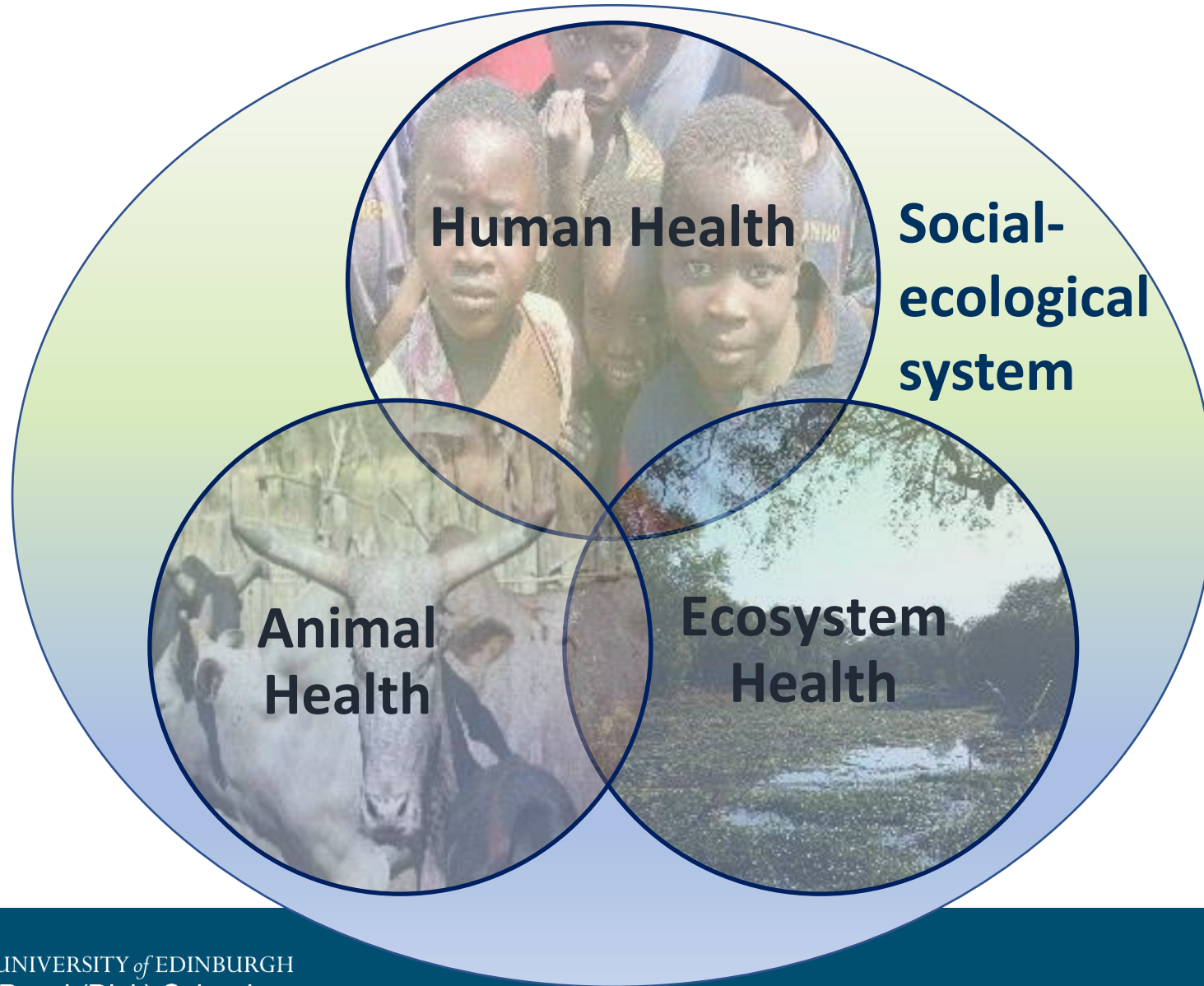
The health of humans and animals is connected to the ecosystems in which they live



THE UNIVERSITY of EDINBURGH
The Royal (Dick) School
of Veterinary Studies

EDINBURGH
extraordinary futures await

What is Conservation Medicine?



**Similar concept
to One Health**



THE UNIVERSITY of EDINBURGH
The Royal (Dick) School
of Veterinary Studies

EDINBURGH
xtraordinary futures await

Conservation Medicine is the application of One Health to the conservation of biodiversity



Conservation Medicine

Seeks to develop and apply health management practices, policies and programmes that sustain biodiversity and protect the ecosystems essential to animal and human health



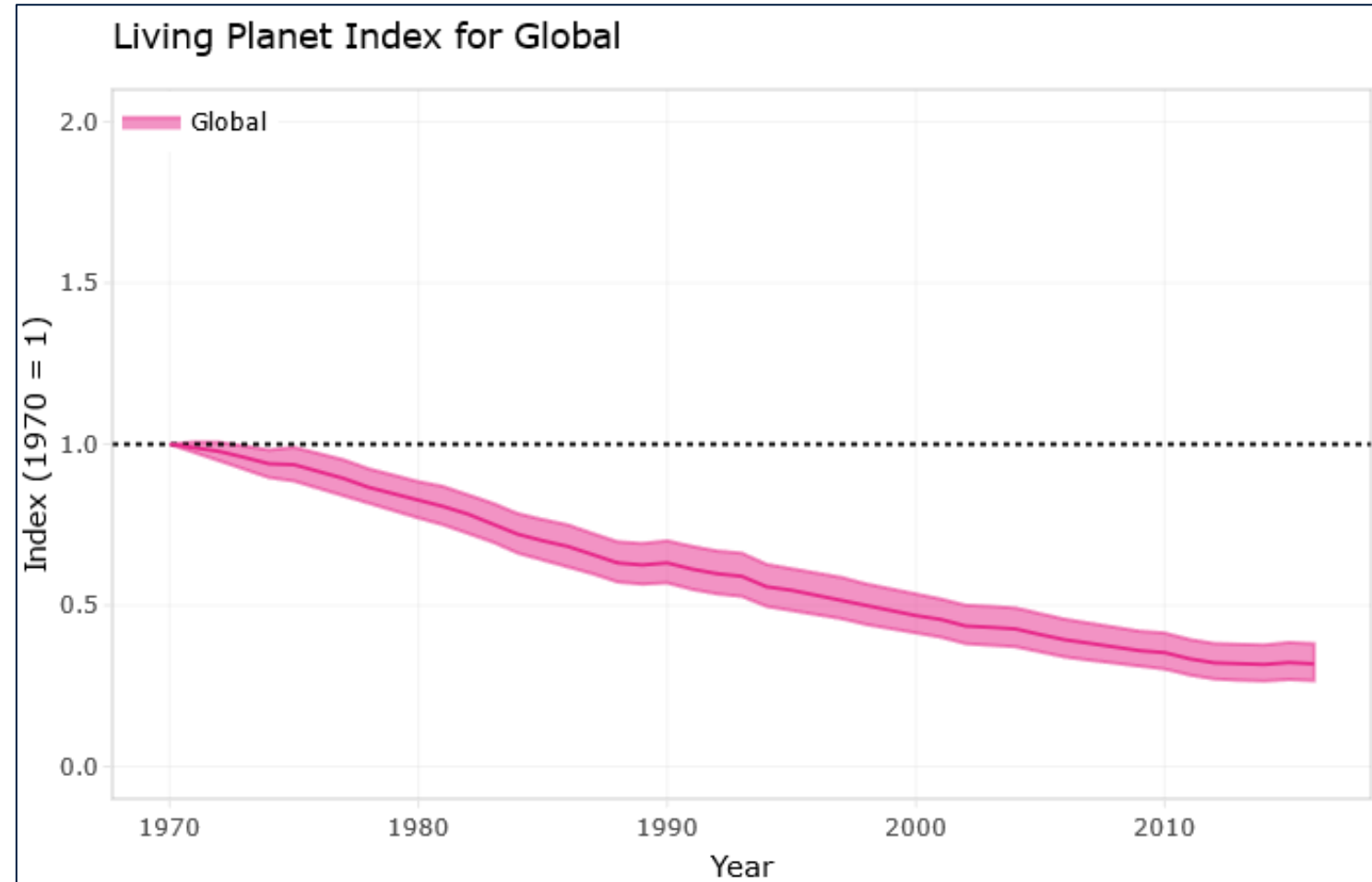
THE UNIVERSITY
of EDINBURGH

EDINBURGH
extraordinary futures await

Living Planet Report 2020 – Bending the Curve of Biodiversity Loss

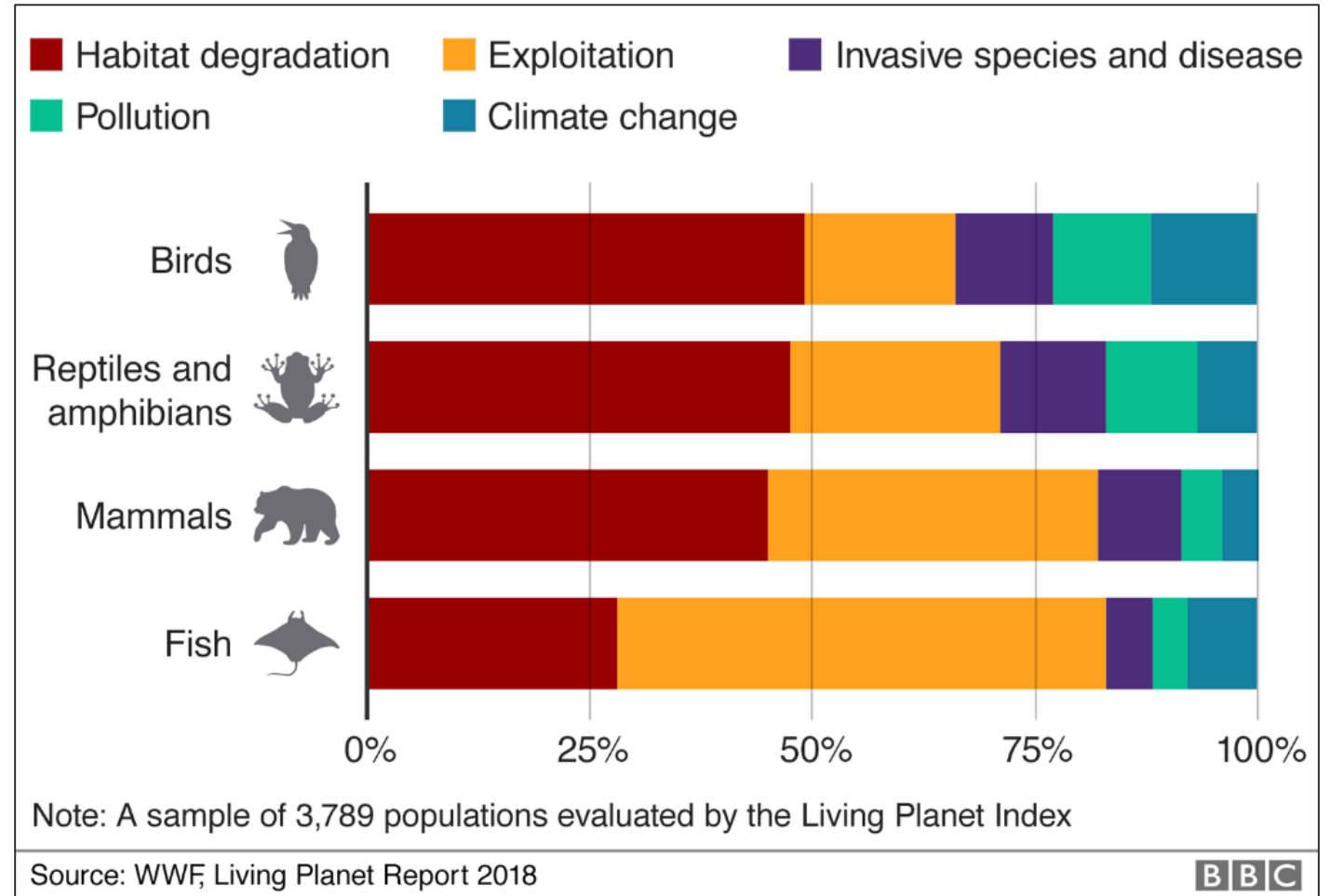
“An SOS for Nature”

- Average decline of 68% (62% to 73%) in monitored vertebrate species populations since 1970



Global Conservation Issues: Direct Drivers of Species Declines

- Habitat loss, degradation and fragmentation
- Overexploitation
- Invasive species and disease
- Pollution
- Climate change



Royal (Dick) School of Veterinary Studies



THE UNIVERSITY of EDINBURGH
The Royal (Dick) School
of Veterinary Studies

<https://qrs.ly/mbbhoxu>

EDINBURGH
extraordinary futures await

College of Medicine and Veterinary Medicine

- Global Health Academy
- Umbrella for a range of health-related MScs



THE UNIVERSITY of EDINBURGH
The Royal (Dick) School
of Veterinary Studies

EDINBURGH
extraordinary futures await

Programme Aims

To provide veterinarians with the skills and knowledge required to be effective practitioners of conservation medicine



Image © Noreen Machila



THE UNIVERSITY of EDINBURGH
The Royal (Dick) School
of Veterinary Studies

EDINBURGH
extraordinary futures await

Programme Team



Programme Director
Neil Anderson



Lecturer and Programme
Coordinator
Glen Cousquer



Lecturer
Deborah Hoyle



Lecturer
Lian Thomas



Programme Coordinator
Marie Rowlands



E-learning Developer
Brian Mather



Student Advisor
Celeste de Blois



Programme Administrator
Stavriana Manti



THE UNIVERSITY of EDINBURGH
The Royal (Dick) School
of Veterinary Studies

EDINBURGH
extraordinary futures await

Programme Structure

- Online
- Part-time intermittent study
- 10-20 hours per week
- Three terms per academic year
- PPD, Certificate, Diploma and MVetSci

<http://www.ed.ac.uk/vet/conservation-medicine>



Compulsory Courses

Year 1

An Introduction to
Conservation Medicine

Ecosystem Health and
Species Conservation

Applied Epidemiology and
Surveillance for
Conservation Medicine



Compulsory Courses

Year 1

An Introduction to
Conservation Medicine

Ecosystem Health and
Species Conservation

Applied Epidemiology and
Surveillance for
Conservation Medicine

Year 2

Veterinary Techniques
and Interventions for
Conservation Medicine

Wildlife Disease
Management

Scientific Paradigms, Research
Approaches and Study Design
across Disciplines



Elective Courses – Year 2

Interventions in Wild
Animal Health

Managing and Leading
Conservation Projects

Innovative
Approaches to Health
Challenges Across
Disciplines

Introduction to
Wildlife Forensics

Captive and Free-
Ranging Wild Animal
Welfare

Zoonotic Disease

GIS and Spatial Data
Analysis

Species
Translocations

Conservation
Genetics

Invasive Non-Native
Species

The Marine
Environment

Wildlife Trade

The Modern Zoo



MSc Dissertation

■ Thesis

- Empirical research project
- Literature review
- Case Series
- Portfolio

Review | [Open Access](#) | Published: 22 March 2017

A Review of Zoonotic Infection Risks Associated with the Wild Meat Trade in Malaysia

[Jennifer Caroline Cantlay](#) ✉, [Daniel J. Ingram](#) & [Anna L. Meredith](#)

[EcoHealth](#) **14**, 361–388(2017) | [Cite this article](#)

5630 Accesses | **9** Citations | **6** Altmetric | [Metrics](#)

Transboundary and
Emerging Diseases



ORIGINAL ARTICLE

Neoplasms and novel gammaherpesviruses in critically endangered captive European minks (*Mustela lutreola*)

Olga Nicolas de Francisco, Fernando Esperón, Carles Juan-Sallés, Ana Carolina Ewbank, Carlos G. das Neves, Alberto Marco, Elena Neves, Neil Anderson, Carlos Sacristán ✉

First published: 03 July 2020 | <https://doi.org/10.1111/tbed.13713>



THE UNIVERSITY of EDINBURGH
The Royal (Dick) School
of Veterinary Studies

EDINBURGH
xtraordinary futures await

Course Materials – delivered via Learn Ultra

[Content](#) [Calendar](#) [Announcements](#) 12 [Discussions](#) [Gradebook](#) [Messages](#) [Groups](#)



Course Staff



Neil Anderson

INSTRUCTOR



Glen Cousquer

INSTRUCTOR

[Show more](#)

Details & Actions



Class register

[View everyone on your course](#)

Course Content



Course Information

Welcome to your course. This module contains important information about your course, including learning outcomes, resource lists, course contacts and help and support information. Please click on this panel to open the drop down menu.



Library Resources

Here you will find the Course Reading list, subject guide and links to DiscoverEd, and the University Library services.

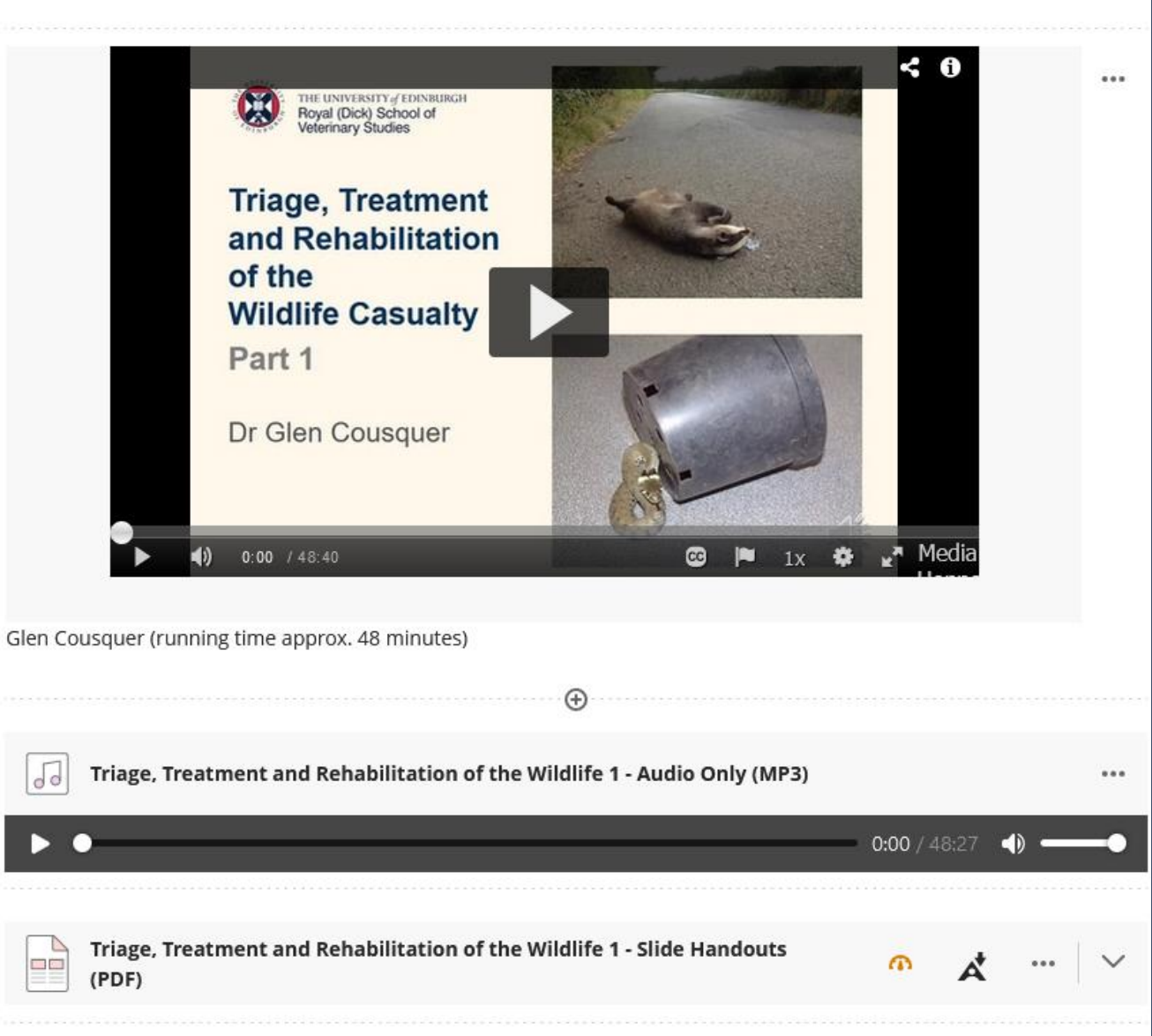


THE UNIVERSITY of EDINBURGH
The Royal (Dick) School
of Veterinary Studies

EDINBURGH
extraordinary futures await

Course Materials

- Recorded presentation
- Reading list
- Discussion forums
- Live discussion / tutorial
- Additional activities
 - Individual
 - Group



The screenshot shows a video player interface. The video title is "Triage, Treatment and Rehabilitation of the Wildlife Casualty Part 1" by Dr Glen Cousquer, from The University of Edinburgh Royal (Dick) School of Veterinary Studies. The video player has a play button, a progress bar at 0:00 / 48:40, and icons for CC, 1x, and Media. Below the video player, there are links for "Triage, Treatment and Rehabilitation of the Wildlife 1 - Audio Only (MP3)" and "Triage, Treatment and Rehabilitation of the Wildlife 1 - Slide Handouts (PDF)".



Interventions in Wild Animal Health



<https://iwah.org/>



Managing and Leading Conservation Projects

- Leadership
- Teamwork
- Motivation
- Interpersonal interactions
- Project management

<https://www.ed.ac.uk/vet/studying/cpd/courses-final/online/managing-leading-conservation-projects>



Entry Requirements

- A recognised degree in Veterinary Medicine or Veterinary Science

Interest in
conservation,
wildlife health and
ecological health

No prior wildlife
or conservation
experience
required

Email Address: Conservation.Medicine@ed.ac.uk




What do our Students Say?

“The best, most interesting, most effective CPD ever!!”

“Gave me a new perspective on what a veterinarian can achieve in conservation”

“A fantastic opportunity to learn from and share experiences with a variety of tutors and fellow students from all over the world”



100% overall
satisfaction with
programme in
2022 PTES
survey



Further Information on our Website

- Why study this programme?
- Qualifications
- Course structure and content
- Teaching team
- Testimonials
- Fees and Funding
- Equality and diversity
- Application links

<https://www.ed.ac.uk/vet/studying/postgraduate/taught-programmes/conservation-medicine>

Student blogs:

<https://blogs.ed.ac.uk/onehealthconservationmedicine/>



THE UNIVERSITY of EDINBURGH
The Royal (Dick) School
of Veterinary Studies

EDINBURGH
xtraordinary futures await

Contact details for follow-up questions

We apologise if we did not get through all of your questions in the time allotted for this session.

If you have further questions that have not been answered, please email:

Conservation.Medicine@ed.ac.uk



THE UNIVERSITY of EDINBURGH
The Royal (Dick) School
of Veterinary Studies

EDINBURGH
xtraordinary futures await



THE UNIVERSITY *of* EDINBURGH
The Royal (Dick) School
of Veterinary Studies

Thank you

Neil Anderson

Email: Neil.Anderson@ed.ac.uk