

The Usher Institute: Master of Public Health Open Day Session – 12 November, 9:30-10:30am

POSTGRADUATE
VIRTUAL
**OPEN
DAYS**

Transforming health in society by working with people, populations and data



THE UNIVERSITY
of EDINBURGH

Open to
the world



THE UNIVERSITY
of EDINBURGH

Master of Public Health

Edinburgh Medical School, CMVM

Professor Devi Sridhar
(*Programme Director*) and
Michelle Evans (*PGT Director*)

Programme Directors



Professor Devi Sridhar

Professor of Global Public Health
MPH On Campus Programme Director



Dr Christine Evans

MPH On Campus Programme
Deputy Director



THE UNIVERSITY
of EDINBURGH

Uusher
institute

EDINBURGH
extraordinary futures await

Programme Teaching Team



Dr Eric Chen

Lecturer and Dissertation Co-ordinator



Dr Christine Evans

Lecturer and Deputy Director



Dr Niall Anderson

Senior Lecturer



Dr Markéta Keller

Teaching Fellow



Dr Eric Carlin

Teaching Fellow



THE UNIVERSITY
of EDINBURGH

Uusher
institute

EDINBURGH
extraordinary futures await

Programme Teaching Team



Professor Harry Campbell

Course Lead



Dr Helen Eborall

Course Lead



Dr Nicola Boydell

Course Lead



Dr Fiona Dobbie

Course Lead



Professor Harish Nair

Course Lead



THE UNIVERSITY
of EDINBURGH

Uusher
institute

EDINBURGH
xtraordinary futures await

Professional Services Support Team



Michelle Hart
Teaching Organisation Manager



Sarah McCallum
Operations Co-ordinator



Lucy Courage
Programme Administrator



Anna Cooper
Student Advisor



Douglas Beales
Wellbeing Advisor



THE UNIVERSITY
of EDINBURGH

Uusher
institute

EDINBURGH
extraordinary futures await



Usher Institute Expertise



THE UNIVERSITY
of EDINBURGH

Usher
institute

EDINBURGH
extraordinary futures await



What is Public Health?

- Public Health is about preventing disease, prolonging life and promoting health through the efforts of society.
- A degree in public health can make a difference to the lives of everyday people. From the smallest communities to worldwide populations, the importance for public health professionals continues to grow.



Why choose this degree?

- Build leadership and communication skills needed to shape health outcomes and solve pressing public health challenges.
- Interact with some of the world's leading public health experts, who've helped shape clinical guidelines and government policy.
- Gain an understanding of how different scientific disciplines are used to investigate.
- Develop the best professional practice in epidemiology, public health and social science, ethics and health.
- Global, multidisciplinary, equity focus and research-led.



Why choose the University of Edinburgh?



World Health
Organisation
Collaborating Centre



Health and Social Care
Data-Driven Innovation Hub



Usher Institute



World leading university and
centre for global and public
health



Public and Global Health
Leadership



Access to real world data and
cutting edge research



THE UNIVERSITY
of EDINBURGH



EDINBURGH
extraordinary futures await

Why choose the University of Edinburgh?



Multidisciplinary Expertise



Vibrant Learning Community



Excellent Study Spaces and Resources



Edinburgh ranked top 10 cities to study



Innovation in teaching



Student Support Model and Student Representation



THE UNIVERSITY
of EDINBURGH



EDINBURGH
extraordinary futures await

Programme Mission

The Master of Public Health programme aims to equip students with evidence-based conceptual and practical tools, to take a critical interdisciplinary approach to public health challenges.



LEARNING OUTCOMES

1



Demonstrate a critical understanding of the theories, concepts and principles underpinning public health practice, policy and research.

2



Apply knowledge and skills and engage with relevant literature, in qualitative and quantitative disciplines.

3



Apply critical analysis, evaluation and synthesis to develop effective responses to contemporary public health challenges

4



Communicate complex public health concepts and issues to both public and professional audiences using a range of media and methods.

5



Exercise autonomy, take responsibility for own work and work constructively with peers on complex public health issues.

Master of Public Health

On Campus

1 year full-time and 2 year part-time

Study commitment 30-45 hours per week

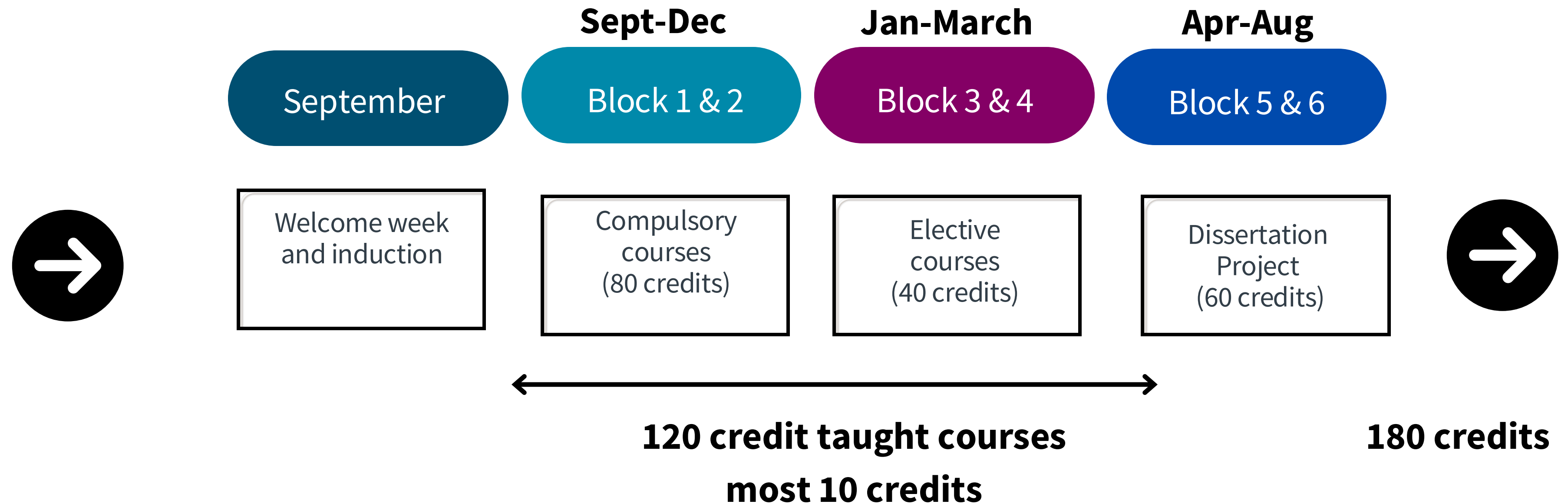
Beautiful city of Edinburgh is ranked in the world's top 10 student cities to study



THE UNIVERSITY
of EDINBURGH


EDINBURGH
extraordinary futures await

Programme Structure





COMPULSORY COURSES (80 credits)

- 
- Introduction to Epidemiology
 - Introduction to Statistics
 - Introduction to Qualitative Research
 - Health Promotion
 - Research Design for Public Health
 - Epidemiology for Public Health
 - Principles of Public Health
 - Introduction to Systematic Reviews



ELECTIVE COURSES (40 credits)



- Developing and Evaluating Complex Public Health Interventions
- Sociology of Health and Illness
- Communicable Disease Control and Environmental Health
- Introduction to Health Economics and Resource Allocation
- Global Health Epidemiology
- Statistical Modelling
- Introduction to R for Public Health
- Investing in Global Health and Development
- Health Economics



THE UNIVERSITY
of EDINBURGH

EDINBURGH
extraordinary futures await



DISSERTATION (60 credits)

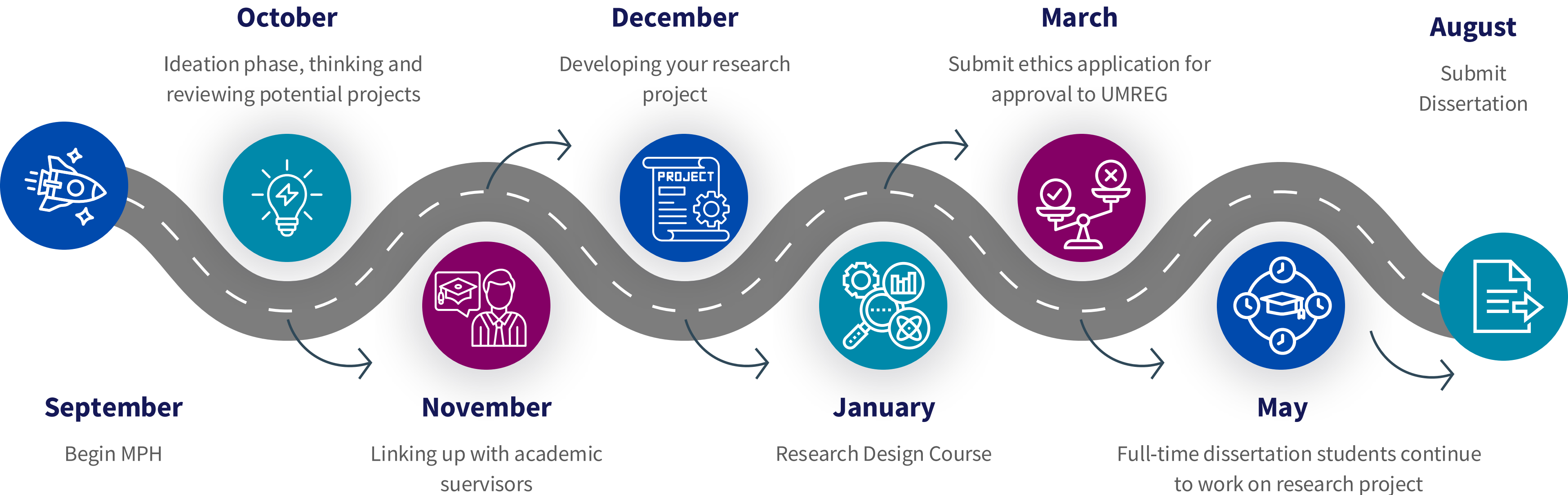
- Traditional dissertation
- Policy Brief



THE UNIVERSITY
of EDINBURGH

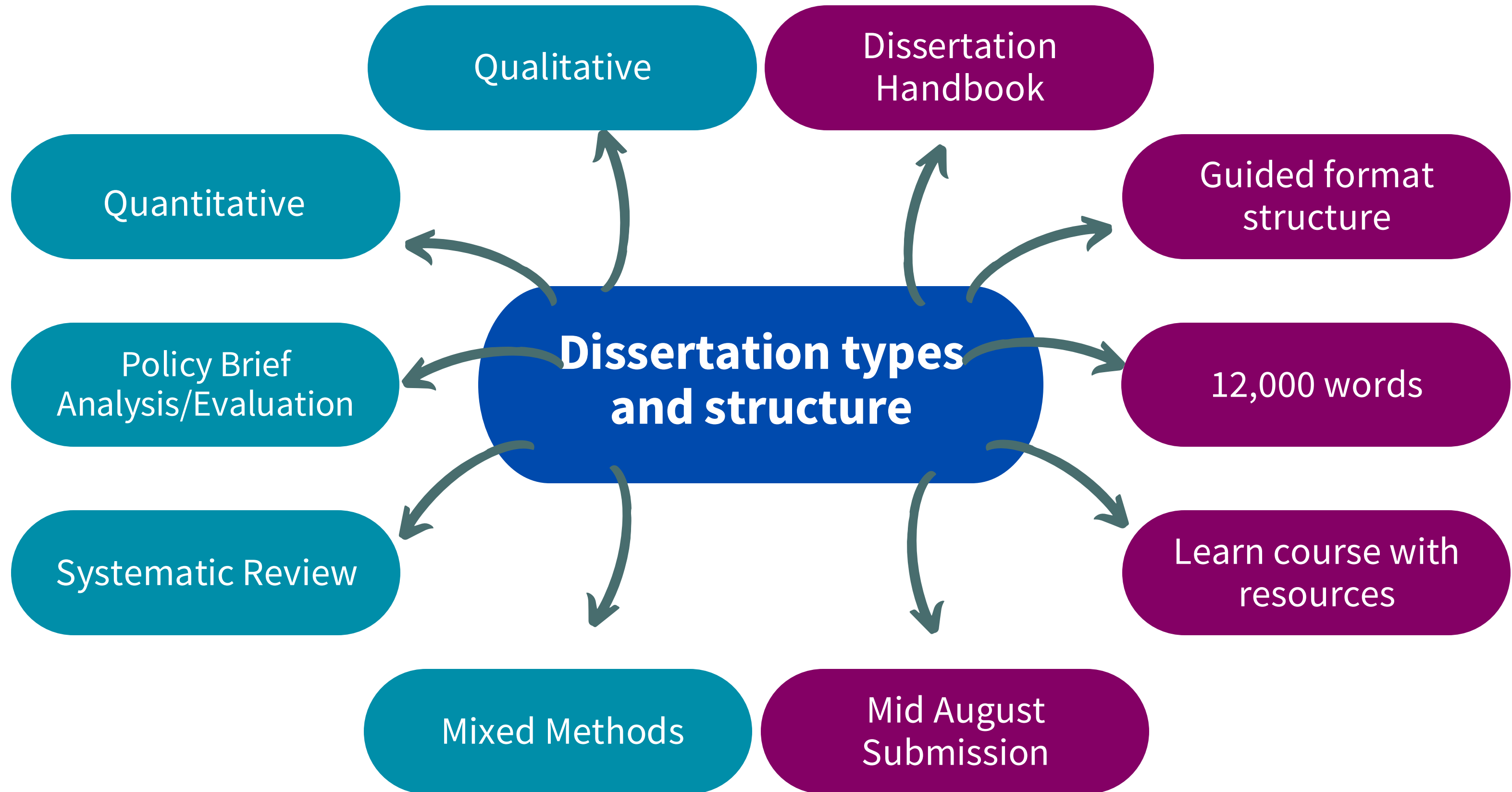
EDINBURGH
extraordinary futures await

The MPH Dissertation - Putting theory into practice



THE UNIVERSITY
of EDINBURGH

EDINBURGH
extraordinary futures await



Semester 1		Semester 2		Dissertation
Block 1	Block 2	Block 3	Block 4	“Student-led” – all students develop research questions in Research Design course, then execute research plan in this period.
Principles of Public Health	Intro to Qualitative Research	Epidemiology for Public Health		
Intro to Epidemiology	Health Promotion	Developing & Evaluating Complex Interventions		
Intro to Statistics	Intro to Systematic Reviews	Research Design for Public Health	Communicable Disease Control	
		Intro to R for Public Health	Global Health Epidemiology	
		Public Health Policy*	Investing in Global Health & Development	
			Statistical Modelling	
			Sociology of Health & Illness	
Essential academic and professional skills				
External Elective Courses				
Many relevant elective courses from other Schools within University of Edinburgh.				

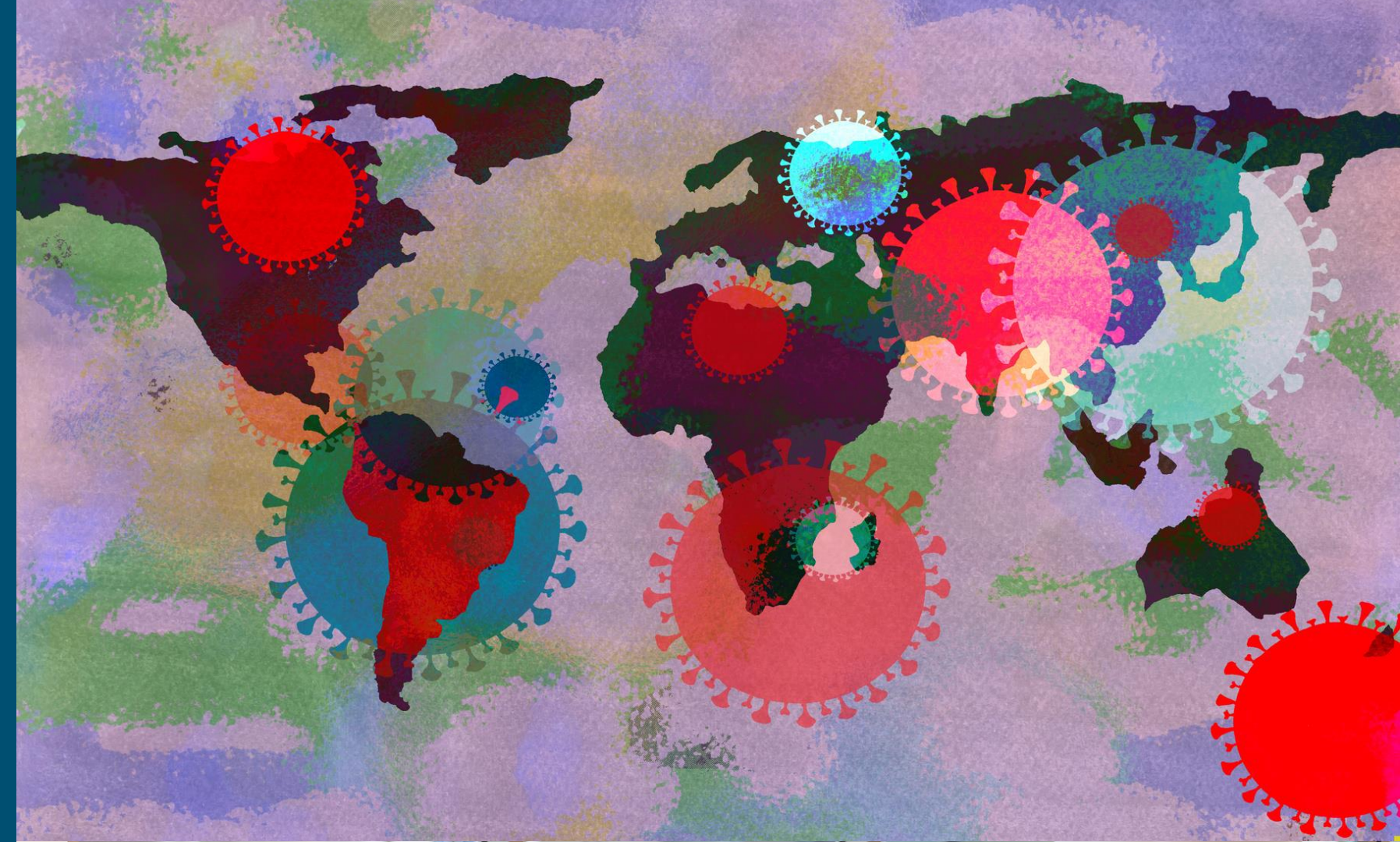
Programme Ethos

Meet contemporary challenges in
public health

- Develop subject knowledge
- Train in relevant research skills
- Prepare for a career in diverse areas



THE UNIVERSITY
of EDINBURGH



Public Health Specialty Pathways



“Classic” Public Health



- Monitor the health status of the community
- Identify health needs
- Develop programmes to reduce risk and screen for early disease
- Control communicable disease



Epidemiology



- Epidemiology is the study of the **distribution** and **determinants** of disease in a population.
- Necessary for planning and evaluating strategies to prevent and treat disease.
- Requires knowledge and skills in theory, data collection and analysis, critical appraisal.



Social Science of Health



- What social factors determine health at a population level?
- What factors drive the public towards/ away from accessing health services?
- Social Science → Evidence Based Medicine

Public Health Specialty Pathways



“Classic” Public Health

Relevant courses: Communicable Disease Control, Public Health Policy, Epidemiology for Public Health



- Monitor the health status of the community
- Identify health needs
- Develop programmes to reduce risk and screen for early disease
- Control communicable disease



Epidemiology

Relevant courses: Introduction to R for Public Health, Statistical Modelling, Global Health Epidemiology



- Epidemiology is the study of the **distribution** and **determinants** of disease in a population.
- Necessary for planning and evaluating strategies to prevent and treat disease.
- Requires knowledge and skills in theory, data collection and analysis, critical appraisal.



Social Science of Health

Relevant courses: Sociology of Health and Illness and Public Health Policy



- What social factors determine health at a population level?
- What factors drive the public towards/ away from accessing health services?
- Social Science → Evidence Based Medicine

Study skills support

INSTITUTE FOR ACADEMIC DEVELOPMENT

Postgraduate taught students

Courses & events

+

Supporting you with your studies - video

Learning resources

Study advice

+

Succeeding at masters level

+

News

Career development

+

Supporting you with your studies - video

Doctoral researchers

+

Home > Institute for Academic Development > Postgraduates > Postgraduate taught students

Postgraduate taught students

Study skills workshops, self-study learning resources, and advice for taught postgraduate students to help you succeed in your studies.

Courses & events

On campus and online study skills workshops and information sessions for taught postgraduate students.

Learning resources

Resources and guides to help you reflect on and develop how you learn and study. Topics includes academic reading, writing, planning, critical thinking, exams and dissertations.

Study advice

Succeeding at masters level





CAREERS SERVICE

Career support and advice

Postgraduates

Taught postgraduates

Understand yourself

Discover what's out there

Build experience

Make it happen

Become professional

Planning your Masters year

PhDs and MRes students

Career Essentials, Quick Links
& MyCareerHub

Equality, diversity & inclusion

Taught postgraduates

Information and advice for taught postgraduate students

Understand yourself

Understand what motivates you and assess your skills and strengths to help you make career decisions

Discover what's out there

Graduate jobs, part-time work, further study - explore your options and research the possibilities

Build experience

Find ways to build your experience, challenge yourself and expand your skills

Make it happen

Writing CVs, cover letters and applications, practising selection tests and preparing for interviews or assessment centres

Become professional

Making the most of your



Usher Institute

UNCOVER | APPLIED EVIDENCE SYNTHESIS

Applying Evidence to Real-World Questions

We carry out rapid and rigorous evidence reviews to answer decision-makers' questions about real-world challenges. Our roots are in the Covid pandemic, but we now aim to address a broad range of complex issues which have a public health dimension - from emerging diseases to the health effects of climate change. We thrive on collaboration, and continue to build partnerships with others who share our goals. We seek to build capacity in the next generation of public health researchers - postgraduate students and alumni with relevant training or experience are welcome to join us, and we produce a variety of open-access resources which are available for use around the world.

Students: Get Involved

Whether you are interested in contributing to our interdisciplinary work on COVID-19 and its consequences, or you would like to discuss a potential new review, or you are a student seeking supervision for a dissertation or extended project on a relevant topic, we would love to hear from you.

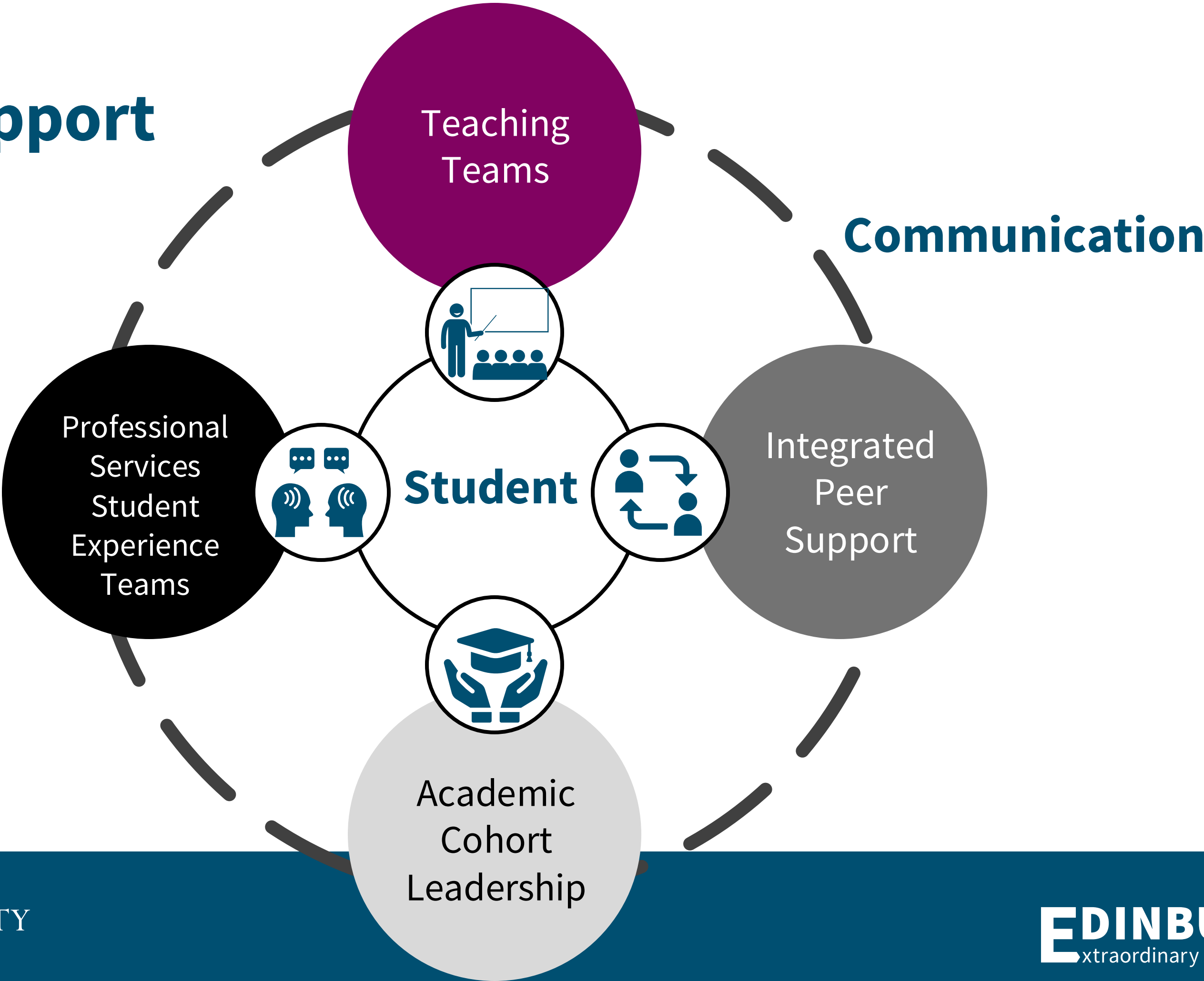


THE UNIVERSITY
of EDINBURGH

Usher
institute

EDINBURGH
extraordinary futures await

Student Support Ecosystem



Your Voice



- Course Feedback
- Staff Student Liaison Committee
- Programme Student Representatives
- School Student Representatives
- Postgraduate Taught Student Experience Survey
- Edinburgh University Students' Association



EUSA EVENTS



- What's On ▾
- Student Opportunities ▾
- Your Voice ▾
- Advice Place ▾
- Eat, Drink & Shop ▾
- Your SA ▾

STUDENT OPPORTUNITIES

- Associate Membership
- Find a Student Group
- Get in Touch
- PLS and International Leader Recruitment Resources
- Room Bookings
- Sports Clubs
- Workshop Series

SOCIETIES

- Find a Society
- Society Events
- Society Resources
- Start a Society

PEER LEARNING AND SUPPORT

- Become a Leader
- Find a Peer Learning and Support Group
- Information for University Staff
- Student Leader Resources

INTERNATIONAL STUDENT ACTIVITIES

- English as a Second Language PALS
- Find an International Group
- Global Buddies
- International Foundation Programme (IFP) Buddies
- Tandem Language Exchange

COMMUNITY VOICES

- Community Volunteer
- Newsletter
- Find an Opportunity
- Recruit Student Volunteers

IMPACT AND RECOGNITION

- Edinburgh Award
- HEAR
- Personal Employability Transcript
- Saltire Awards



- What's On ▾
- Student Opportunities ▾
- Your Voice ▾
- Advice Place ▾
- Eat, Drink & Shop ▾
- Your SA ▾

11
Nov
2024

12
Nov
2024



POSTER SALE

10:00am - 05:00pm | Hangar 5 at Potterrow
Kit out your digs with a huge selection of licensed posters and merch!

GET INVOLVED

11
Nov
2024



STUDENT PROTEST BANNER & PLACARD MAKING DROP-IN

03:00pm - 05:00pm | Potterrow
Everyone is welcome to join!

GET INVOLVED

11
Nov
2024



UNAPOLOGETICALLY YOU: A PERSONAL BRANDING MASTERCLASS

06:00pm - 08:30pm | Off-Campus | Black Women* at Edinburgh
By popular demand, Black Women at Edinburgh is thrilled to present our highly anticipated Undergraduate LinkedIn & Personal Branding Workshop, designed just for you!

GET INVOLVED

11
Nov
2024



PLEASANCE INTERACTIVE QUIZ - THE WALKING DEAD

08:00pm - 11:59pm
Do you have what it takes to scoop first prize?

GET INVOLVED



THE UNIVERSITY
of EDINBURGH

EDINBURGH
extraordinary futures await

Applying - Entry Requirements

- A UK 2:1 honours degree, or its international equivalent, in medicine, nursing, social science, science, biomedicine, or other related discipline.
- Personal Statement as part of your application
- English language programme requirements

Programme start date: **8 September 2025**

Application deadlines: **Round 1: 13 Dec 2024**

Round 2: 21 February 2025

Round 3: 25 April 2025

Round 4: 20 June 2025

Final Round: 22 August 2025



THE UNIVERSITY
of EDINBURGH

EDINBURGH
extraordinary futures await

On Campus Fees 2024/25

AWARD	DURATION	STUDY MODE	FEE UK	FEE INTERNATIONAL/EU
MSc	1 YEAR	FULL-TIME	£13,800	£28,800
MSc	2 YEAR	PART-TIME	£6,500	£14,400



Scholarships and Funding

- The Glenmore Postgraduate Scholarship
- UoE Graduate Scholarship Scheme

Scholarship Search | The University of Edinburgh

**USE THE SCHOLARSHIP
SEARCH TOOL**



THE UNIVERSITY
of EDINBURGH

EDINBURGH
extraordinary futures await

Next steps...

<https://virtualvisits.ed.ac.uk/pg>

<https://edin.ac/student-chat-pg>



THE UNIVERSITY
of EDINBURGH

EDINBURGH
extraordinary futures await

Contact details for follow-up questions

- We apologise if we did not get through all of your questions in the time allotted for this session. If you have further questions that have not been answered, please email: futurestudents@ed.ac.uk

or alternatively you can contact the MPH team directly on the email below:

- MPH on campus email: mph.campus@ed.ac.uk



Thank you – click ‘Leave’ when the session ends

- Return to your ‘e-ticket’ to find and attend other sessions you’ve booked – by clicking on the button in the email we sent you.



It's Day One!

Hi Beth,

It is Day One of our Postgraduate Virtual Open Days! We are looking forward to welcoming you during the day.

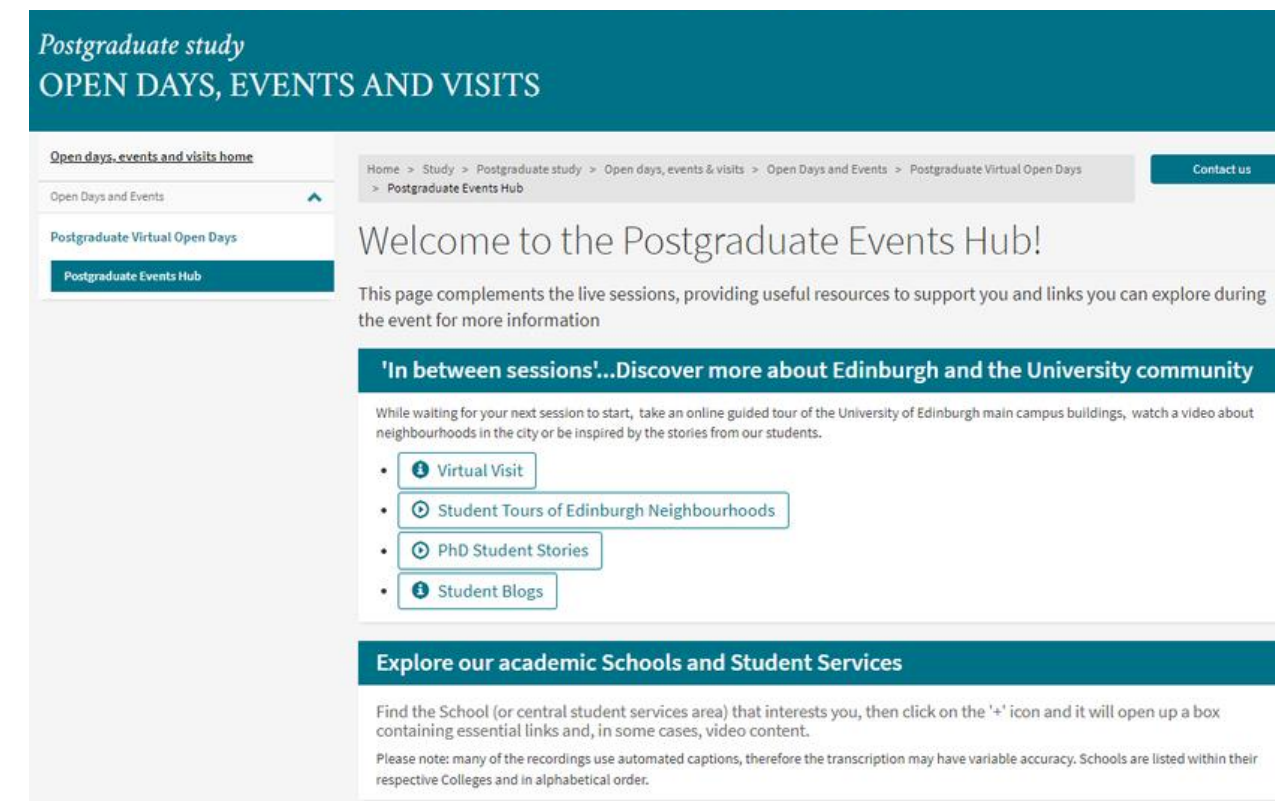
Joining the event

To access the event, use your 'ticket' link below. The sessions are listed in chronological order and the times shown are in Greenwich Mean Time (GMT).

The link to join a session will appear 15 minutes before it starts.

[Virtual Open Days Ticket](#)

- ...and visit the events hub:
- <https://edin.ac/4gZuP3G>



THE UNIVERSITY
of EDINBURGH

EDINBURGH
extraordinary futures await



THE UNIVERSITY
of EDINBURGH

Thank you

EDINBURGH
extraordinary futures await