



THE UNIVERSITY  
*of* EDINBURGH

# MSc Environmental Protection and Management

Professor Alistair Hamilton | 13 November 2024

**EDINBURGH**  
extraordinary futures await

# Who are we?

- Professor Alistair Hamilton

- Programme Director - background in applied ecology, but now also work in spatial mapping and modelling, as well as interdisciplinary areas



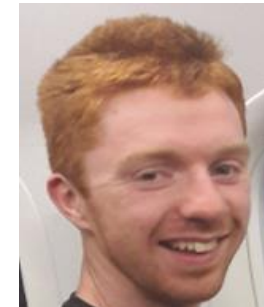
- Dr. Hannah Grist

- Deputy Programme Director – coastal ecology background, increasingly engaged in interdisciplinary studies, community and stakeholder engagement



- Dr. Andrew Innes

- Senior lecturer – environmental chemist, specialism in soil and water pollution, modelling and research design and analysis



# Institutional Context



THE UNIVERSITY *of* EDINBURGH  
School of GeoSciences



THE UNIVERSITY  
*of* EDINBURGH

**EDINBURGH**  
xtraordinary futures await

# Who/what is SRUC?

- Specialist HEI
- Focus on land-based industries and issues
- A main research provider to the Scottish Government
- Research and education, but also a large consultancy business
- You are a normal UoE/Geosciences MSc student!
- University partner in MSc delivery

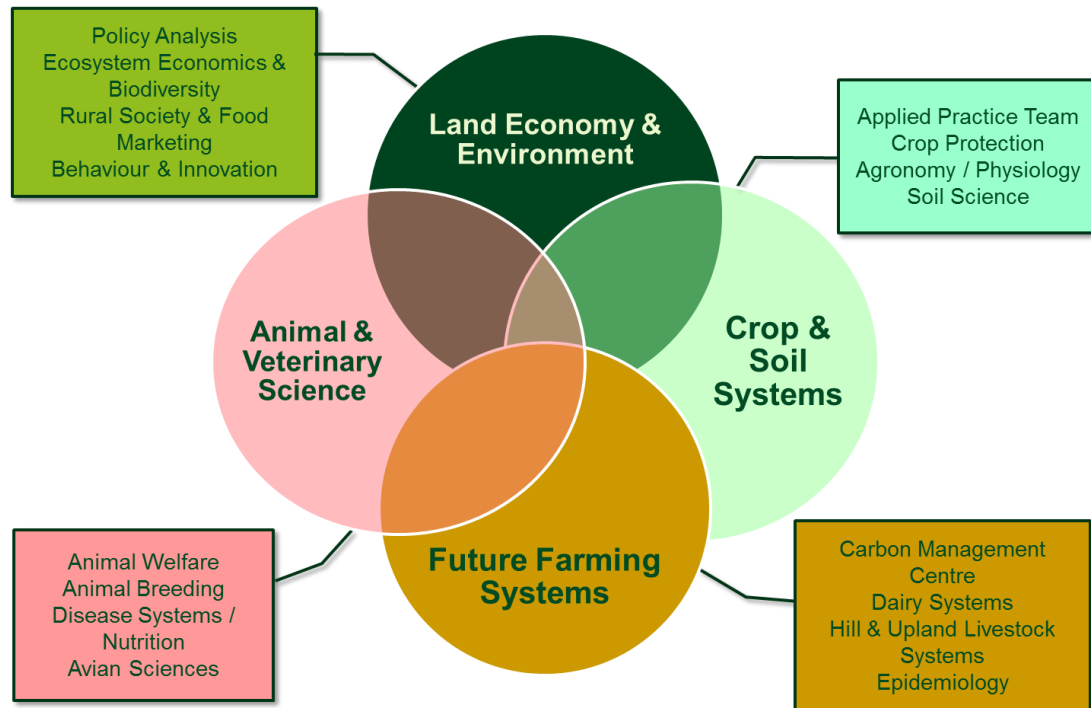


THE UNIVERSITY  
of EDINBURGH



**EDINBURGH**  
extraordinary futures await

# Institutional Context



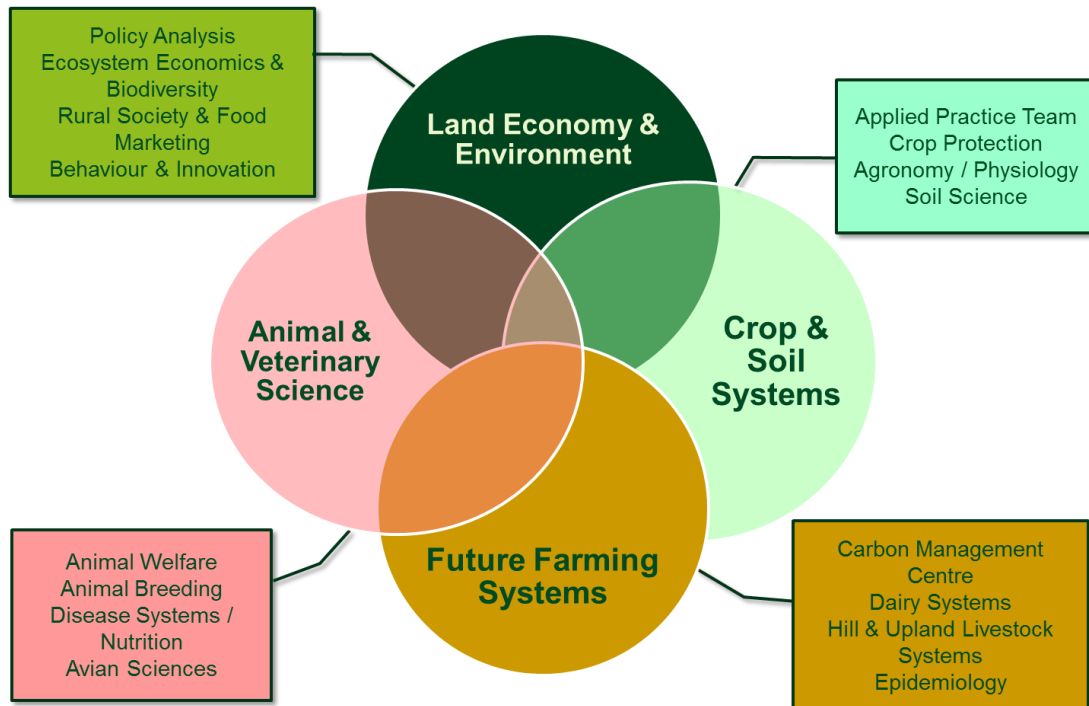
THE UNIVERSITY of EDINBURGH  
School of GeoSciences



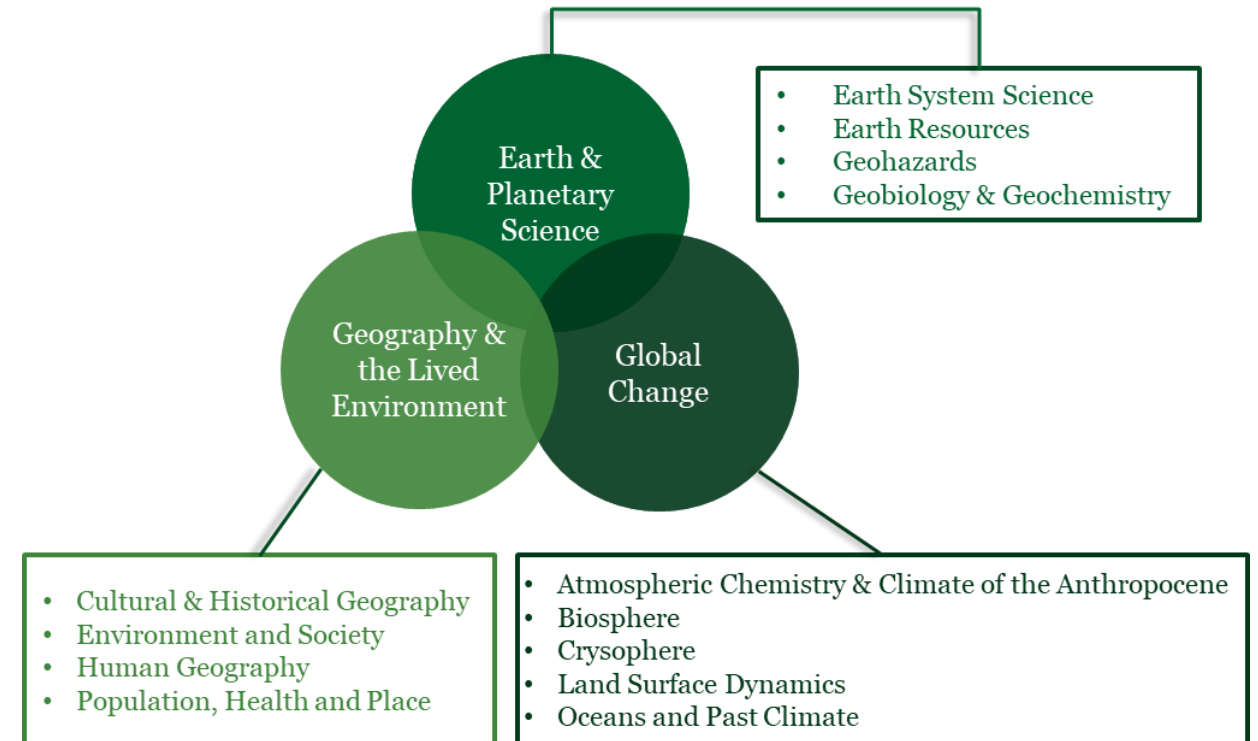
THE UNIVERSITY  
of EDINBURGH

**EDINBURGH**  
extraordinary futures await

# Institutional Context



THE UNIVERSITY of EDINBURGH  
School of GeoSciences



THE UNIVERSITY  
of EDINBURGH

**EDINBURGH**  
extraordinary futures await



# Why study MSc Environmental Protection and Management?

- Gain an in-depth understanding of natural resource management based on a scientific understanding of the issues, but also allowing you to explore how implementing solutions requires working across disciplines.
- It will equip you with advanced skills and knowledge about:
  - the processes that give rise to environmental degradation and pollution problems
  - the strategies to affect sustainable change



# Why Edinburgh?

- Well established programme – constantly evolving over the last 25 years
- Access to expertise and facilities across the University and SRUC
- Diverse and interdisciplinary teaching team
- Flexibility to pursue your own area of interest through coursework and dissertation
- Extensive alumni network, engaging with them from day 1
- Every year comes from a diversity of backgrounds, countries, experiences



THE UNIVERSITY  
of EDINBURGH

**EDINBURGH**  
extraordinary futures await



# Full-time programme structure

Find a full list of compulsory and optional courses on [Degree Programme Timetables](#)

- Compulsory courses (each 20 credits)
  1. Land Use/Environmental Interactions
  2. Professional and Research Skills in Practice
  3. Interdisciplinary Approaches to the Environment
  4. Environmental Survey and Monitoring
- Typically 2 optional courses (20 credits), or mix with 10 credit options, to a total of 40 credits. Options selected from a very wide range available
- Dissertation (60 credits)



THE UNIVERSITY  
of EDINBURGH

**EDINBURGH**  
extraordinary futures await

# Part-time structure

- You may study this programme part-time as we are committed to helping people into education while continuing to work or managing family and personal commitments.
- Two and three-year part-time options are available.
- We recommend living within a commutable distance from Edinburgh in order to undertake part-time study, and we encourage you to contact us to discuss part-time study in more detail.

## 2-year programme

- Year 1: 4 compulsory courses and 1 optional course
- Year 2: Dissertation and 1 optional courses

## 3-year programme

- Year 1: 2 compulsory courses and 1 optional course
- Year 2: 2 compulsory courses and 1 optional courses
- Year 3: Dissertation only



# Teaching and assessment

- You will experience a range of teaching and assessment styles while you are studying.
- Courses can be delivered through a mix of:
  - lectures
  - tutorials
  - seminars
  - workshops
  - practical's
  - laboratory work
  - short field trips and longer field courses



THE UNIVERSITY  
of EDINBURGH

**EDINBURGH**  
extraordinary futures await

# Dissertation

- Worth 60 of the 180 credits
- A major part of the year
- A key highlight for most students
- Database of ideas (anyone want a list of past topics emailed to them?), but many students generate their own
- Used to demonstrate MSc level abilities to employers

## Previous topics have included:

- COVID impacts on air pollution in China and the UK
- Development of automated mapping from UAV (drone) data
- Gender issues in waste policy
- Biochar impacts on soil nutrient cycling
- Heavy metal pollution and phytoremediation
- River and flood risk modelling
- Life cycle analysis of Italian wine production
- Wildlife/human conflicts in Canadian parks
- GHG emissions from agriculture: a policy analysis
- Mapping the potential for urban nature-based solutions
- Stakeholder evaluation for achieving NetZero
- Biodiversity and farm management options



# Typical week for an EPM student

- Typically:
  - 9 hours contact time per week (spread over 2 core and 1 optional course)
  - Independent study expected – you time manage yourself (this usually ramps up through each semester)
  - May also have a dissertation workshop, or cohort/geosciences event to attend.
    - LOTS of talks, workshops every week, including those from IAD to support study skills
- This Semester:
  - MON – AM: Land Use
  - THURS – PM: Professional Skills, plus optional course
  - Workshops – often take place on Wed afternoon
  - Evening events – potluck, careers/alumni get together, ceilidh
  - Weekend activities – visits, hillwalking





# Field trips

- You will have a unique opportunity to take part in a residential field trip as part of this programme
  - enabling you to gain new skills and develop previous skills
- Recent trips have been to Morocco:
  - students learned a range of field and data analysis techniques covering topics such as:
    - water quality assessment
    - biodiversity monitoring
    - river survey and flood modelling
    - carbon footprinting of local agriculture
    - social science and tourism attitudes
    - air quality monitoring



THE UNIVERSITY  
of EDINBURGH

**EDINBURGH**  
extraordinary futures await





THE UNIVERSITY  
of EDINBURGH

**EDINBURGH**  
extraordinary futures await





THE UNIVERSITY  
of EDINBURGH

**EDINBURGH**  
extraordinary futures await



# Career opportunities

We produce graduates with a holistic approach to environmental issues, flexibility in assessing and implementing possible solutions, and possessing key academic and soft skills for the workplace or further studies

- Our graduates are working in a variety of sectors, including:
  - environmental regulators
  - international and governmental agencies
  - NGOs
  - private environmental consultancies
  - PhD studies and academia
  - and many more.

- Examples of organisations our graduates have gained employment at include:
  - SEPA
  - Talisman Energy
  - AECOM
  - Water Witness
  - The Archipelagos Institute of Marine Conservation



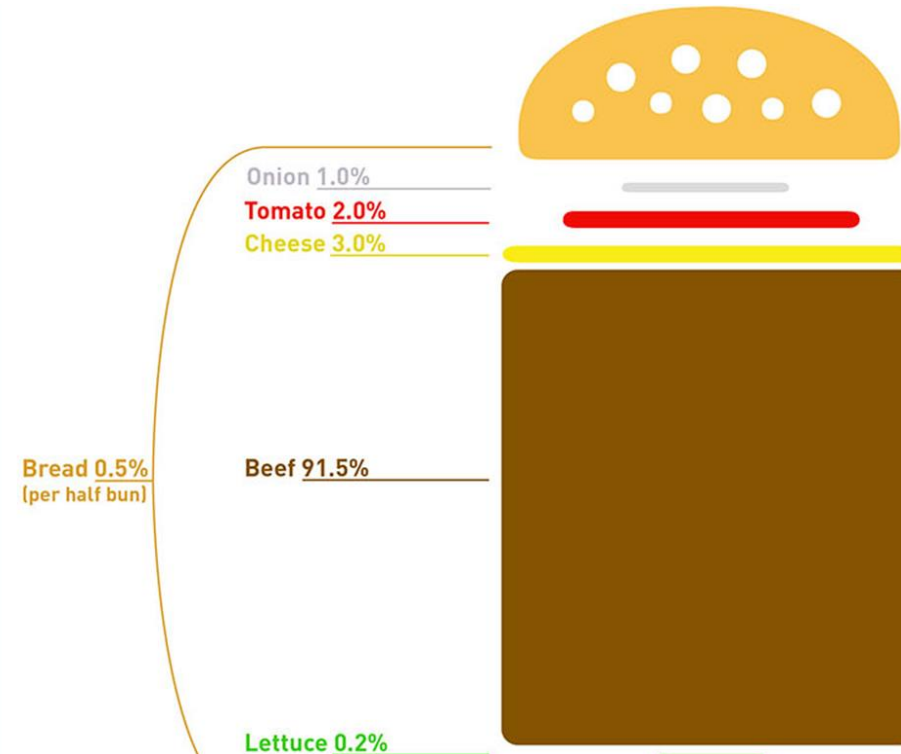
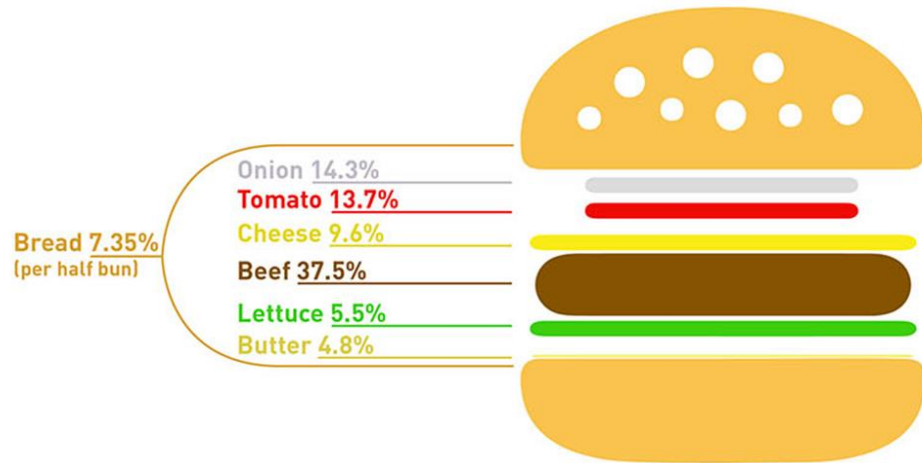
THE UNIVERSITY  
of EDINBURGH

**EDINBURGH**  
extraordinary futures await

# Links with consulting

Find out more by visiting the SRUC website -

<https://www.sruc.ac.uk/business-services/sac-consulting/>





# Food and footprint at SAC Consulting

Find out more by visiting the SRUC website -

<https://www.sruc.ac.uk/business-services/sac-consulting/>



THE UNIVERSITY  
of EDINBURGH

**EDINBURGH**  
xtraordinary futures await

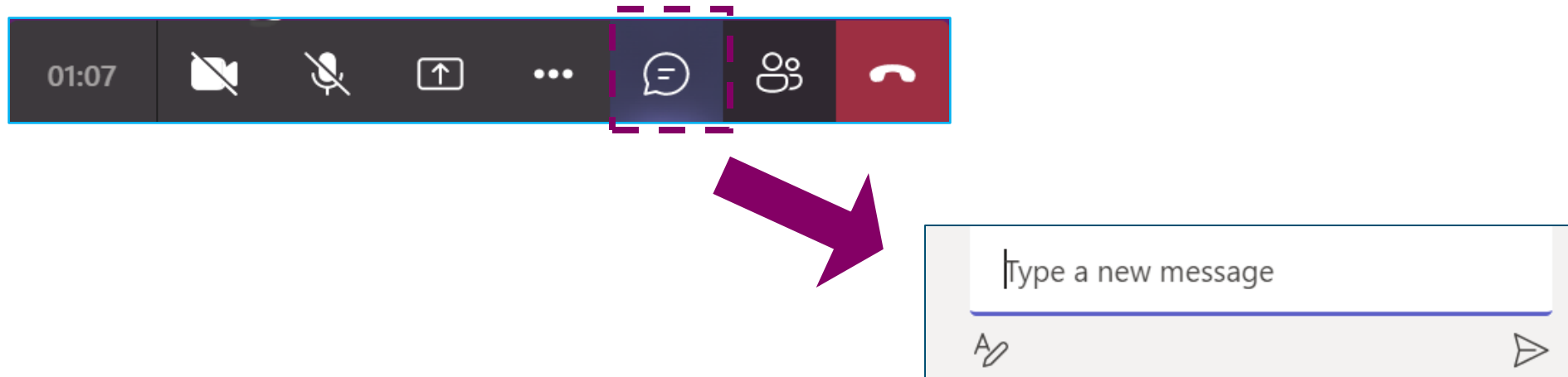
# Funding and scholarships

- School of GeoSciences scholarships
  - [See potential funding for GeoSciences students](#)
- Scotland's Rural College (SRUC) alumni discount
  - [Visit the SRUC website](#)
- You are encouraged to research the range of potential scholarships and other funding outside the University for which you may be eligible
  - [Search for funding](#)



# Asking questions

- Type your question into the Chat Area



# Next steps...

<https://virtualvisits.ed.ac.uk/pg>



<https://edin.ac/student-chat-pg>



THE UNIVERSITY  
of EDINBURGH

**EDINBURGH**  
extraordinary futures await

# Contact details for follow-up questions

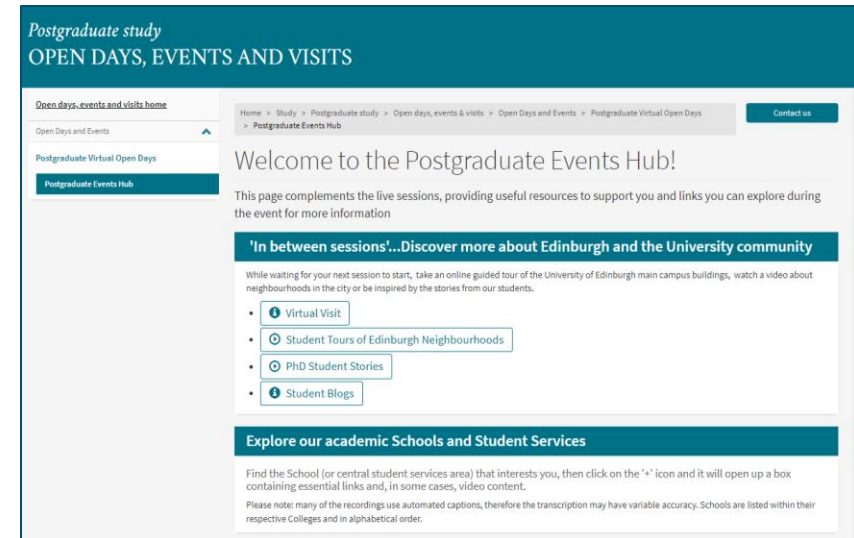
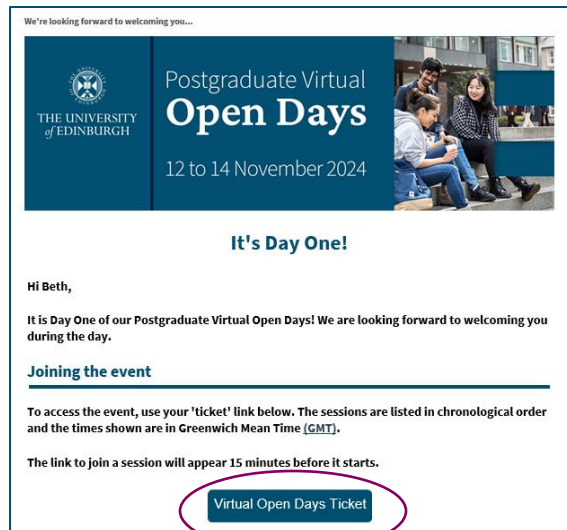
- We apologise if we did not get through all of your questions in the time allotted for this session. If you have further questions that have not been answered, please email: [futurestudents@ed.ac.uk](mailto:futurestudents@ed.ac.uk)
- *Or, Professor Alistair Hamilton: [Alistair.Hamilton@sruc.ac.uk](mailto:Alistair.Hamilton@sruc.ac.uk)*





# Thank you – click ‘Leave’ when the session ends

- Return to your ‘e-ticket’ to find and attend other sessions you’ve booked – by clicking on the button in the email we sent you...
- ...and visit the events hub:
- <https://edin.ac/4gZuP3G>



THE UNIVERSITY  
of EDINBURGH

**EDINBURGH**  
extraordinary futures await



THE UNIVERSITY  
*of* EDINBURGH

# Thank you

Professor Alistair Hamilton

[Alistair.Hamilton@sruc.ac.uk](mailto:Alistair.Hamilton@sruc.ac.uk)