



THE UNIVERSITY  
*of* EDINBURGH

# Cultural Heritage PhD at Edinburgh

Ed Hollis, Director of PG Research

THE UNIVERSITY *of* EDINBURGH  
*Edinburgh College of Art*

**EDINBURGH**  
extraordinary futures await

# Welcome live from Edinburgh!

- Audio Check
- Recording of the session
- Presentation
- Question and Answer
- Next steps



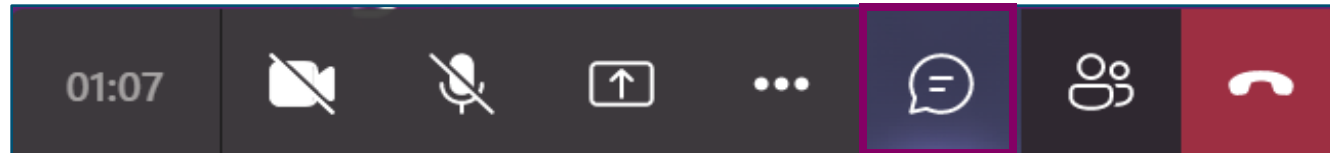
THE UNIVERSITY  
of EDINBURGH

**EDINBURGH**  
extraordinary futures await

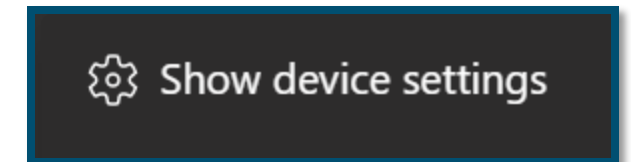


# Audio check (Microsoft Teams)

- Can you hear the presenter speaking?
- Please type “**no**” in the Chat area if you cannot hear the presenter



- If you can't hear:
  - Check your settings by clicking on the three little dots on the options bar and then 'show device settings'. Here you can check and change your speakers.
  - Try signing out and signing back into the session
  - Don't worry, the session is being recorded

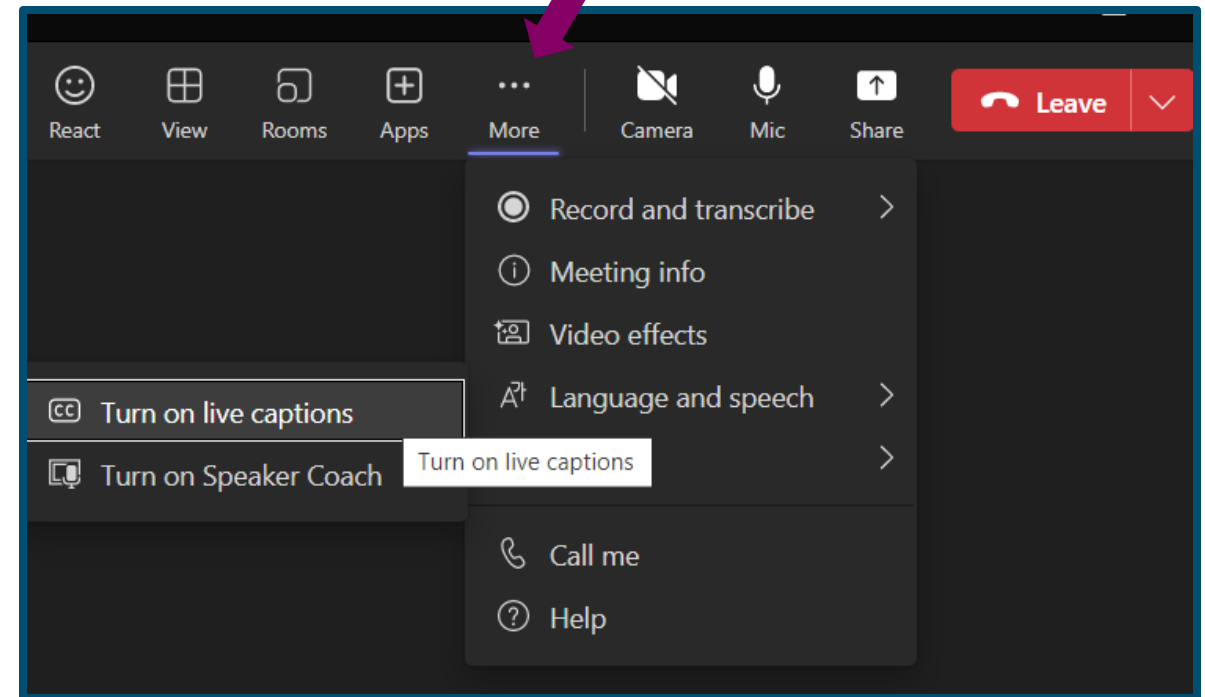


# Live captions (Microsoft Teams)

You can turn on automated live captions as follows:

- More > Language and speech > Turn on live captions

These are automated therefore won't be 100% accurate





# Recording (MS Teams)

- Today's session is being recorded
- Any information that you provide during a session is optional and in doing so you give us consent to process this information
- If you don't want your question or name read out in public, you can email your question to [futurestudents@ed.ac.uk](mailto:futurestudents@ed.ac.uk)
- Please note - a few attendees' names may be visible in the recording, if it is important that your name not be visible in the recording, please exit the session and re-enter using an incognito browser and typing in a pseudonym for yourself
- The session will be stored by the University of Edinburgh and published on our website after the event on a non-indexed web page
- ***You will be emailed with a link to watch the session recording by the end of next week***





THE UNIVERSITY  
*of* EDINBURGH

# Cultural Heritage PhD at Edinburgh

Ed Hollis, Director of PG Research

THE UNIVERSITY *of* EDINBURGH  
*Edinburgh College of Art*

**EDINBURGH**  
extraordinary futures await

# Why Postgraduate at Edinburgh?

- We are globally recognised for our **research, development and innovation** and we've provided our students with world-class teaching for more than 425 years
- The University of Edinburgh placed **27th in the 2025 QS World University Rankings**.
- Our graduates are ranked **24th in the world by employers**.



THE UNIVERSITY  
of EDINBURGH



# Why Postgraduate at Edinburgh?

- The University is ranked **fourth in the UK** based on the quality and breadth of its research
- Quality Assurance Agency awarded us the **highest rating possible** for the quality of the student learning experience
- The University & ECA have **world-leading facilities** both for academic research and creative practice.



THE UNIVERSITY  
of EDINBURGH



# Cultural Heritage - PhD



THE UNIVERSITY of EDINBURGH  
Edinburgh College of Art





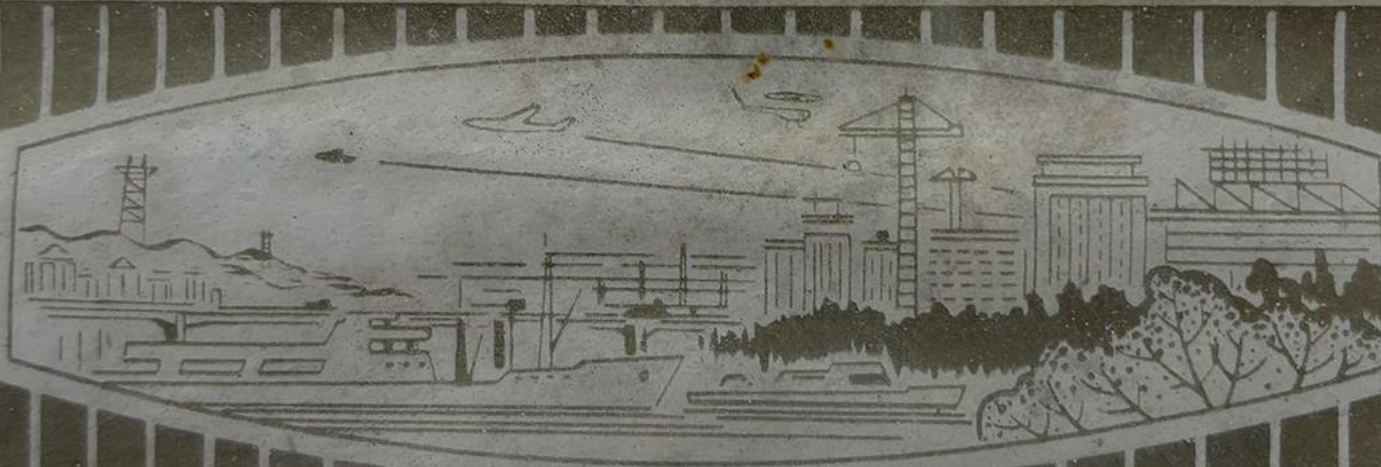
# Cultural Heritage - PhD



THE UNIVERSITY of EDINBURGH  
Edinburgh College of Art

Once understood as a conservative discipline, **cultural heritage** is emerging as a set of **experimental practices**, engaging with **new technologies**; reconceptualisations of the **tangible and intangible**; shifting **global relations**; **climate change**; changing **epistemologies of the past**; movements towards **participatory democratisation**

This evolving discourse is too complex to belong to one single subject area or its traditions. **Based in ECA** but engaging students and supervisory expertise from **across CAHSS and beyond**, this programme offers a way to engage with these multidisciplinary considerations and to benefit from synoptic insights when addressing them.





# Cultural Heritage - PhD



THE UNIVERSITY of EDINBURGH  
Edinburgh College of Art

The programme is one of a small number of **named research degrees** in Cultural Heritage in the UK and Europe.





# Cultural Heritage - PhD

The programme provides a platform to engage with the **diverse practices and discourses** of Cultural Heritage across the University of Edinburgh.



THE UNIVERSITY of EDINBURGH  
Edinburgh College of Art

Home > About > Ecosystem > Digital Cultural Heritage

RESEARCH CLUSTER

## DIGITAL CULTURAL HERITAGE

The Digital Cultural Heritage cluster brings together researchers from across the University of Edinburgh who work on analysing, understanding and developing new approaches to the relationships between data, digital and cultural heritage.



## The Cultural Heritage and Community Engagement research group (CHCE)

### Scottish Centre for Conservation Studies

Edinburgh School of Architecture and Landscape Architecture (ESALA)

Institutes and centres

Home > Engage & Innovate > Tourism, Travel & Festivals

## TOURISM, TRAVEL & FESTIVALS

We support people and organisations to be adaptive, innovative, and futures-focused.



Change cookie settings



CULTURAL  
HERITAGE

Festival of Cultural  
Heritage Research

15—19 April 2024  
St Cecilia's Hall, 50 Niddry St, EH1 1LG

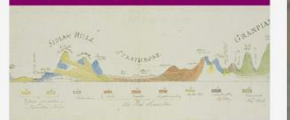


### Printed Books



Edinburgh University Library's rare book collections are internationally important and include many books found nowhere else. The Centre for Research Collections (CRC) is an ideal place to conduct research on rare books.

### Archives and Manuscripts



The University of Edinburgh holds some of the world's most important archives and manuscript collections, providing unique resources for the study of a wide range of disciplines, cultures, technologies, people, and places.

### Art Collection



Discover over 8,000 works of art collected over 400 years in the University Art Collection.

### Musical Instrument Collection



Information about how to explore the collections including access to the online catalogue and instrument images.

### Lothian Health Services Archive



Lothian Health Services Archive holds the historically important local records of NHS hospitals and other health-related material.

### Recent Acquisitions



Details of recent acquisitions to support teaching and research.



# Cultural Heritage - PhD

The programme provides a platform, through **Una Europa**, to engage with Cultural Heritage researchers across Europe.

## Doctoral Programme in Cultural Heritage

Co-developed by



ALMA MATER STUDIORUM  
UNIVERSITÀ DI BOLOGNA



THE UNIVERSITY of EDINBURGH  
Edinburgh College of Art



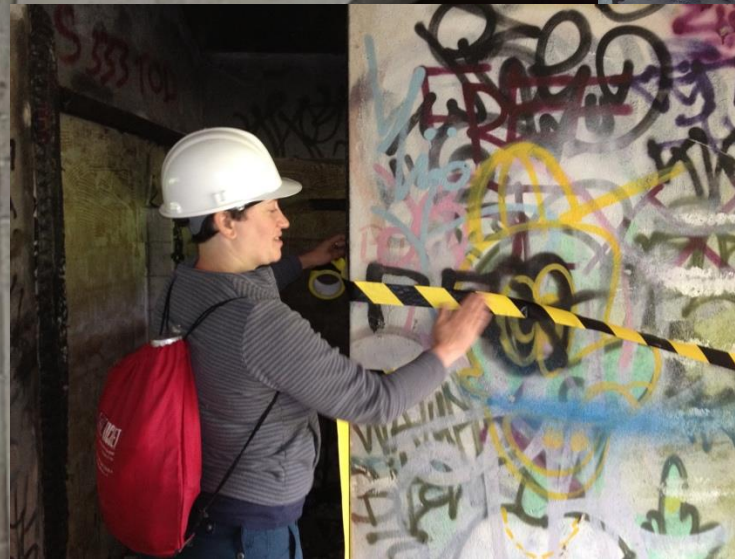


# Cultural Heritage - PhD

The programme empowers students and researchers to **develop careers** in areas such as **tourism, cultural management, conservation, curation.**



THE UNIVERSITY of EDINBURGH  
Edinburgh College of Art



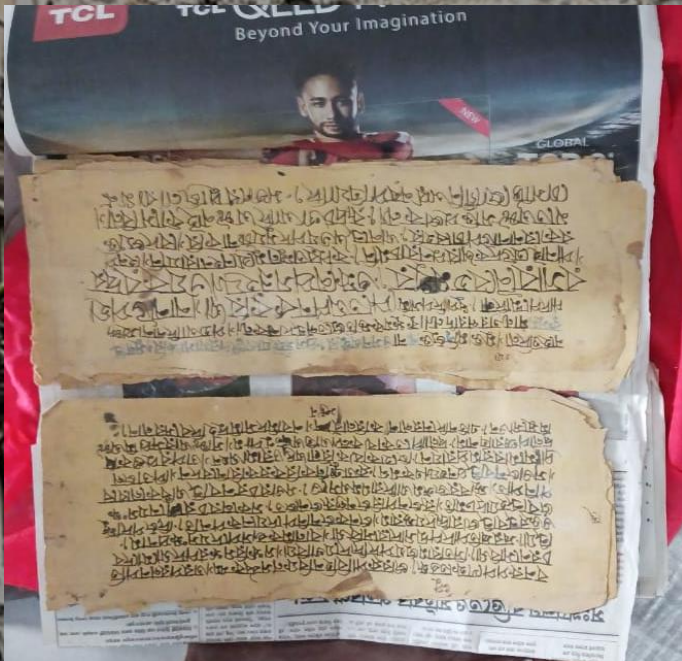


# Cultural Heritage - PhD

The programme offers research training that is in depth, rigorous, and transdisciplinary with a **tailored and transversal research methods course**.



THE UNIVERSITY of EDINBURGH  
Edinburgh College of Art





# Cultural Heritage - PhD



THE UNIVERSITY of EDINBURGH  
Edinburgh College of Art

Course web page:

<https://www.ed.ac.uk/programme/cultural-heritage-phd>

To learn more, please contact Ed Hollis : [e.hollis@ed.ac.uk](mailto:e.hollis@ed.ac.uk)





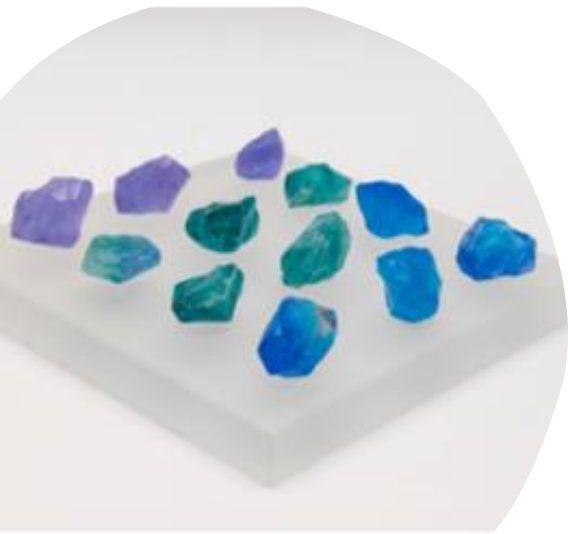
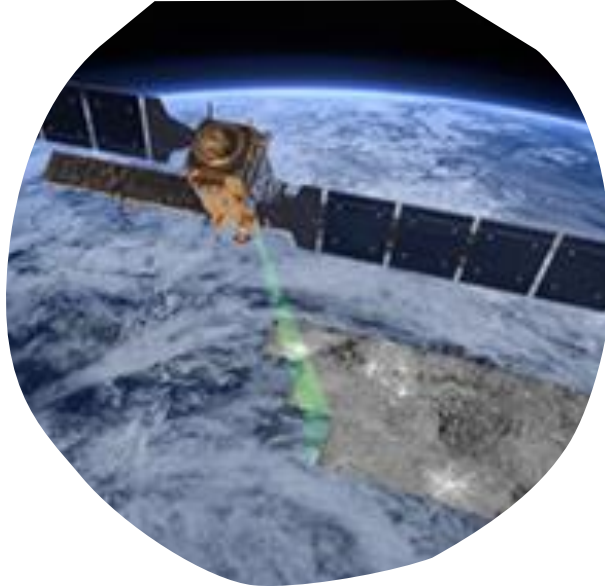
# ECA Research

- We are a community of approximately 200 researchers, working across the creative arts, humanities, social sciences and the creative computational sciences.
- Our research is consolidated within our five subject areas: the School of Architecture and Landscape Architecture (ESALA), the Reid School of Music, the School of History of Art, the School of Art, and the School of Design.
- Alongside these, ECA leads three major centres/institutes (the Institute of Design Informatics, Creative Informatics, and OPENSpace), hosts two major projects (CoSTAR and Braid) and c.30 research groups focused on topics from AI and ethics, to music as social innovation, to Global Contemporary art history.



THE UNIVERSITY  
of EDINBURGH

**EDINBURGH**  
extraordinary futures await



# Research Themes

Our research falls broadly into the following themes:

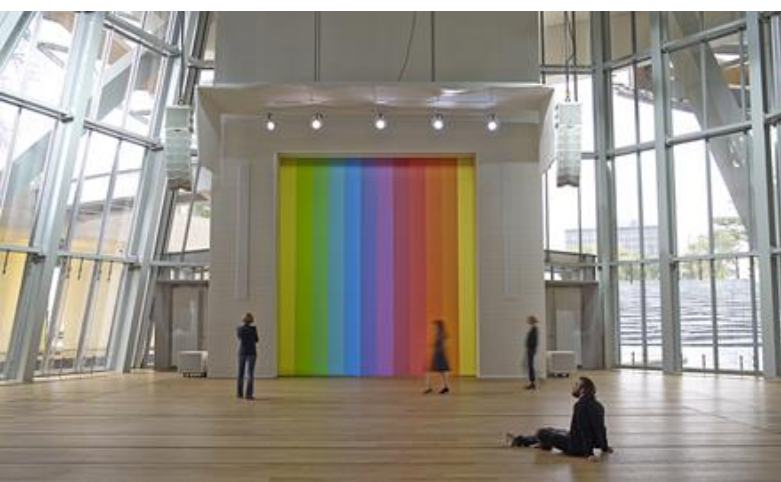
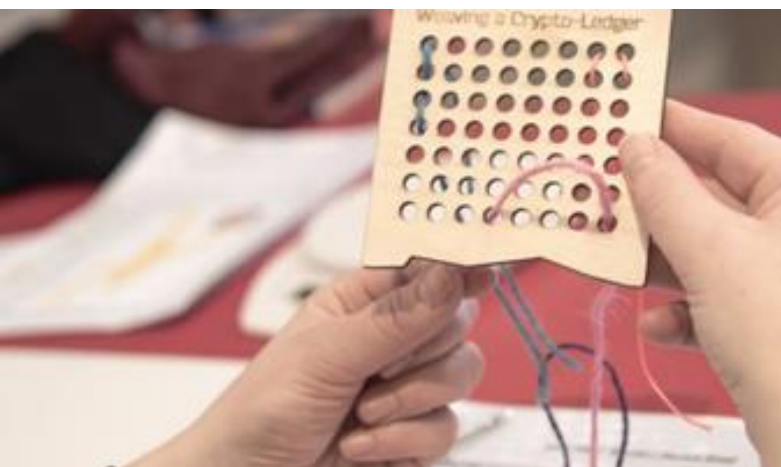
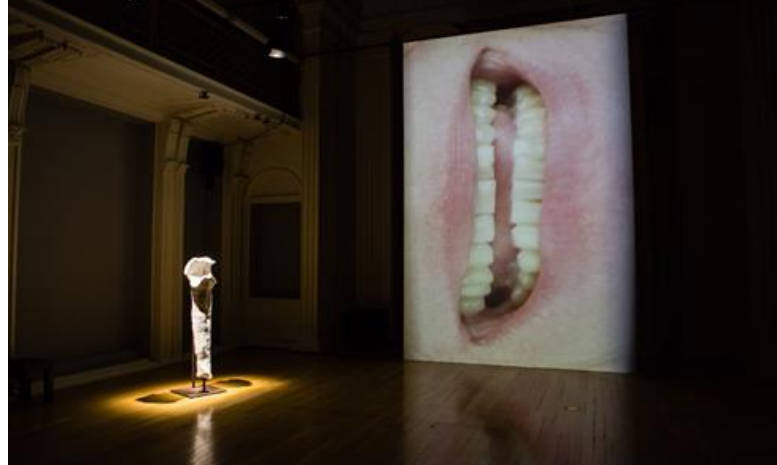
- **Critical and Cultural Studies**, including art, design and architectural history and theory, philosophy, musicology, and film theory.
- **Creative Practice**, including contemporary art, filmmaking, animation, music composition, performance, graphic and media art, textiles and fashion, and architectural and interior design.
- **AI, Data, and New Technologies**, including design informatics, creative AI, data-driven innovation, acoustics, urban analytics, and music neuroscience.
- **Community and Environment**, including health and wellbeing, sustainable design, social inequalities, community outreach, and urban renewal.



THE UNIVERSITY  
of EDINBURGH

**EDINBURGH**  
extraordinary futures await





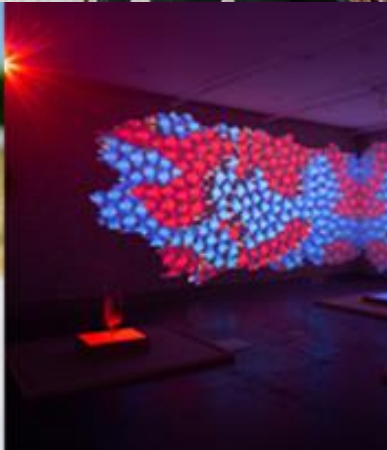
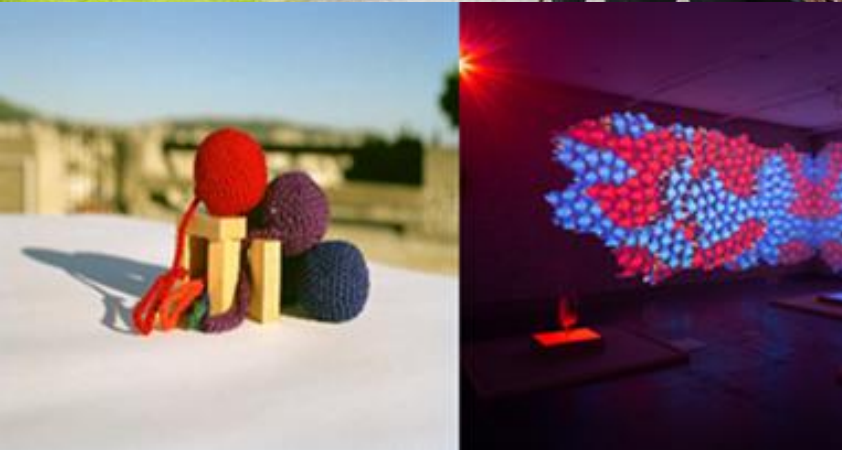
About a third of our research community are practice researchers, working across arts and design, music and landscape architecture, producing research in a variety of forms, from exhibitions, artworks, landscape design, design products, film, performance, digital media products, compositions, and artists books.



# Research Groups by Subject Area

## Art:

- Temporality/Entropy/Being (Louise Milne)
- Expanding Cinema (Aurelian Froment)
- Art & Learning (Neil Mulholland)
- Sexes (Lucy Weir and Benoît Loiseau)







# History of Art

- Dada and Surrealism (Paulina Caro Troncosco)
- Edinburgh Manuscripts: Composition and Collection (Bryony Coombs, Heather Pulliam & Hope Doherty-Harrison)
- The Global Contemporary (Kirsten Lloyd)
- Material Culture in the Seventeenth and Eighteenth Centuries (Vicky Coltman, Catriona Murray)
- Sexes (Lucy Weir)
- Forum for German Visual Culture (Christian Weikop)
- Parity in Practice (Cole Collins, Elysia Leichelt, Martam Ohadi-Hamadani)
- Transoceanic Art Research Consortium (Jamie Forde)





## School of Design

- AI, Ethics & Society (Ewa Luger)
- RAFT (Sarah Kettley & Jessamy Kelly)
- Animation research network Scotland (Nichola Dobson)
- Critical change (Rachel Harkness, Craig Martin, Arno Verhoeven)
- Design & Screen Cultures (Mike Anusas)

The New Real (Drew Hemment)  
FilmMedicine Network/Research Group (Amy Hardie)  
Performance Research Group (Beverley Hood (Design) And Lucy Weir (Hoa))  
The Centre for Data Culture and Society (ECA Representative – Beverley Hood)



# Edinburgh School of Architecture and Landscape Architecture (ESALA):

- History of Architecture and the Built Environment (Alistair Fair)
- Medellín Urban Innovation (Soledad Garcia Ferrari)
- Scottish Centre for Conservation Studies (Miles Glendinning)
- The Edinburgh Strategic Alliance in Architecture, Built Environment, and Planning (Soledad García-Ferrari)







# Music:

- Acoustics and Audio (Stefan Bilbao)
- History, Time, and Temporality in Music, Sound, and Media (James Cook)
- Jazz and Popular Music Study Group (Marian Jago)
- Music as Social Innovation (Raymond MacDonald)
- Music in Human and Social Development (Katie Overy)



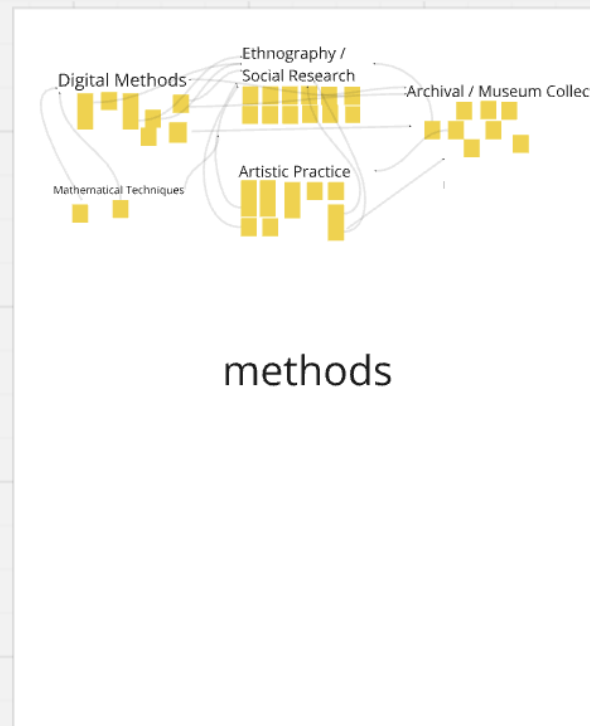
# Programmes

- Programmes are generally prescribed by you through your research proposal and are either:
  - Practice-led: you make a body of work in which you interrogate/demonstrate new ideas, supported by a written thesis
  - Theory based: you examine the work of others with a written thesis.
- What do people research?

[https://miro.com/app/board/uXjVLe3n4yw=](https://miro.com/app/board/uXjVLe3n4yw=/)







THE UNIVERSITY  
of EDINBURGH



# topics

# methods

# supervisor 1

# supervisor 2

Madelyne Evans  
Decoding the self  
as a feminist  
creative act: Simone  
Weil and the work of  
Gwen John & Celia  
Paul

Xiaozhuang Gao  
Fostering Nature  
Connectedness: De-  
signing Nature-  
Informed  
Multisensory  
Meditation Spaces

Jiahui Zhou  
Digital Culture and  
the Experience  
Economy: New  
Media Art in  
Post-socialist China

David  
Mahoney  
Sustainable  
Website  
Design

Jiangning Cao  
Identification and  
Simulation of Blue  
Green Infrastructure  
in Urban Area

Ed Hollis  
creative  
writing/drawing

Madelyne Evans  
Art historical  
analysis  
ethological analysis  
literature review  
archival research

Xiaozhuang Gao  
Literature Review  
participatory  
design  
Biofeedback  
design

Jiahui Zhou  
Literature  
Review  
Case Studies  
Action Research

David Mahoney  
Literature  
Review  
Case Studies  
Co-Design

Jiangning Cao  
Literature review  
Data Collection  
Spatial Analysis  
Machine Learning

Ed Hollis  
suzie  
attiwill

Madelyne  
Evans  
Dr Tamara  
Tredd

Xiaozhuang  
Gao  
Ms.Beverley  
Hood

Jiahui Zhou  
Prof Chia-  
Ling Yang

David  
Mahoney  
Prof Melissa  
Terras

Jiangning Cao  
Prof Simon  
Bell

Ed Hollis  
Nicholas  
Boyersky

Madelyne Evans  
Prof Rachel  
Muers  
Dr Michelle Foot

Xiaozhuang Gao  
Dr.Denisa  
Petrova  
Dr.Candela  
Sanchez-Rodilla  
Espeso

Jiahui Zhou  
Prof Ian  
Rothwell

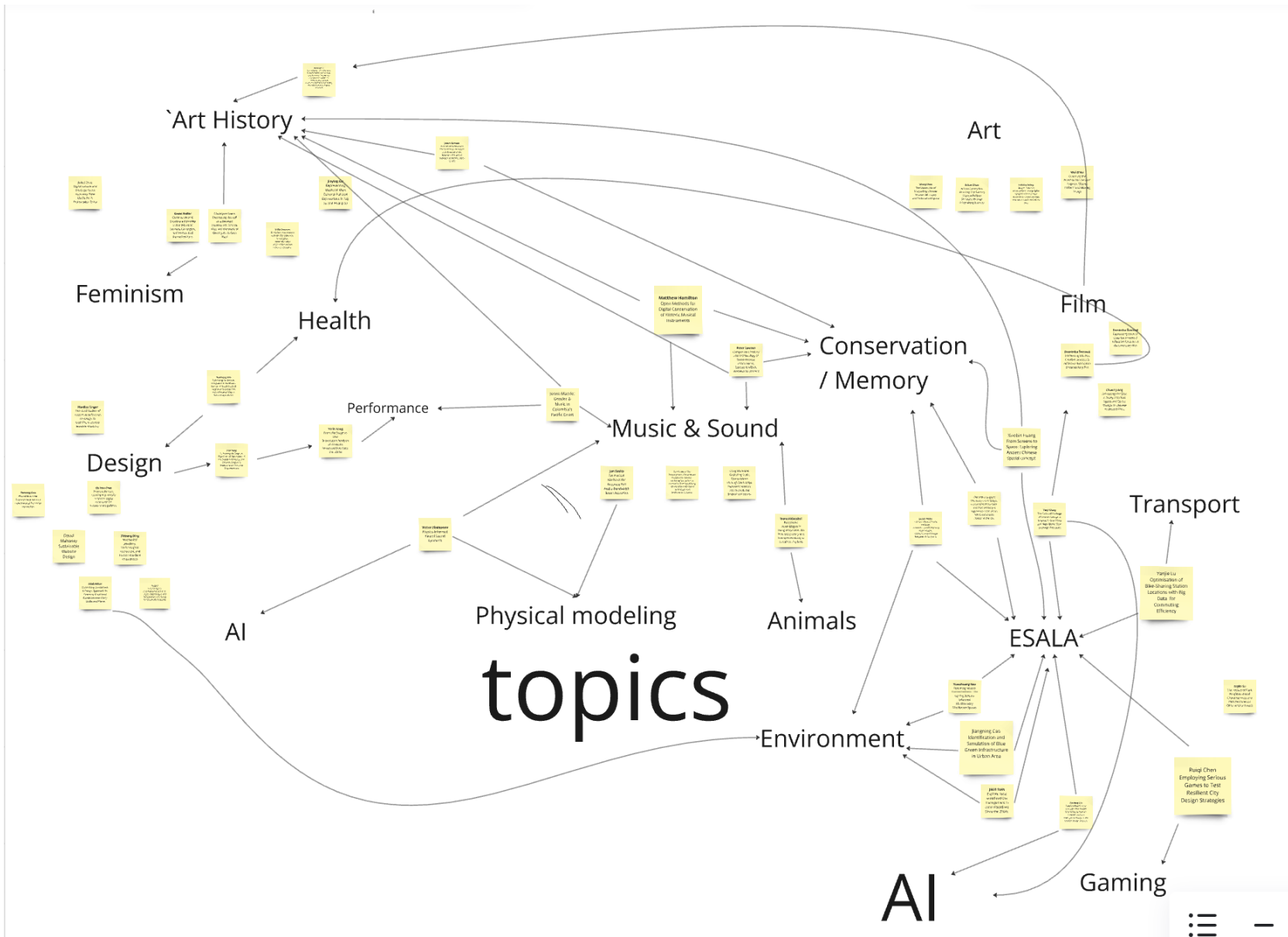
David  
Mahoney  
Prof John  
Lee

Jiangning Cao  
Dr Scott  
Ogletree  
Dr Alessia  
Calafiore



THE UNIVERSITY  
of EDINBURGH





THE UNIVERSITY  
of EDINBURGH

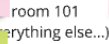








5





# Finding a supervisor

- There are numerous disciplines across ECA – please view these online and look at staff profiles. Not all are available all the time to supervise but please contact them to find out if they are.
- It can be a good idea to discuss your idea with a potential supervisor before submitting your application.
- [How to find a research supervisor | The University of Edinburgh](#)
- [People Directory | Edinburgh College of Art](#)



# Periods of study and progress

- MScR is 1 year FT; 2 years PT 180 credits = 1800 study hrs
- MPhil is 2 years FT; 4 years PT 360 credits = 3,600 study hrs
- PhD is 3 years FT; 6 years PT 540+ credits = 5,400 study hrs
  - Study Week f/t = 8 hrs per day, 40 hrs per week

## Academic Progress

- Annual review every year to check on progress with supervisory team and internal reviewer.
- Submission of thesis once agreed with team, assessed by viva voce examination.





# Modes of study & facilities

- Programmes are generally prescribed by you through your research proposal and is either:
  - Practice led – you make a body of work which you interrogate/demonstrate new ideas, supported by a written thesis
  - Theory based – you examine the work of others within the written thesis.
- In both instances you are looking to contribute something original to your field so you need to think about the overall discipline.
- You will have access to all of the University libraries, the ECA workshops and a dedicated study space for PGR students.\*

\* may depend on availability at a given time



THE UNIVERSITY  
of EDINBURGH

**EDINBURGH**  
extraordinary futures await

# Supporting research

- We run a dedicated research methods course in September to guide you through various ways of conducting research.
- The Institute for Academic Development (IAD) run excellent courses for PGR students in all aspects of the study as well as training if you are able to work as a tutor during your time.
- <https://www.ed.ac.uk/institute-academic-development>
- The school (& wider University) offers a range of events over the year including talks and workshops in different research subjects to attend.





# Application process

- Once you have made contact with a supervisor (and possibly me) you can follow the guidance on the website to submit your application – among other evidence of your qualifications you must submit a clear research proposal which sets out what you will do.
  - It's a really good idea to look and see what we do at ECA before submitting – we want to find the best fit for you.
- Once submitted this will go to a panel for review who will make the decision on your application.
- <https://www.eca.ed.ac.uk/study/postgraduate/design-mphilphd>



# Application Deadlines

We encourage you to apply at least one month prior to entry so that we have enough time to process your application. If you are also applying for funding or will require a visa then we strongly recommend you apply as early as possible.





# Requirements

## ■ Academic qualifications

- [Academic qualifications | The University of Edinburgh](#)
- A UK 2:1 honours degree, or its international equivalent. We will also take any professional experience into account.
- Some programmes also require a Masters degree.
- [English language entry requirements | The University of Edinburgh](#)
- You must demonstrate a level of English language competency at a level that will enable you to succeed in your studies, regardless of your nationality or country of residence.

## ■ Documents required

- References
- Research proposal
- Portfolio (practice based)
- Degree certificates and transcripts



# Scholarship Funding

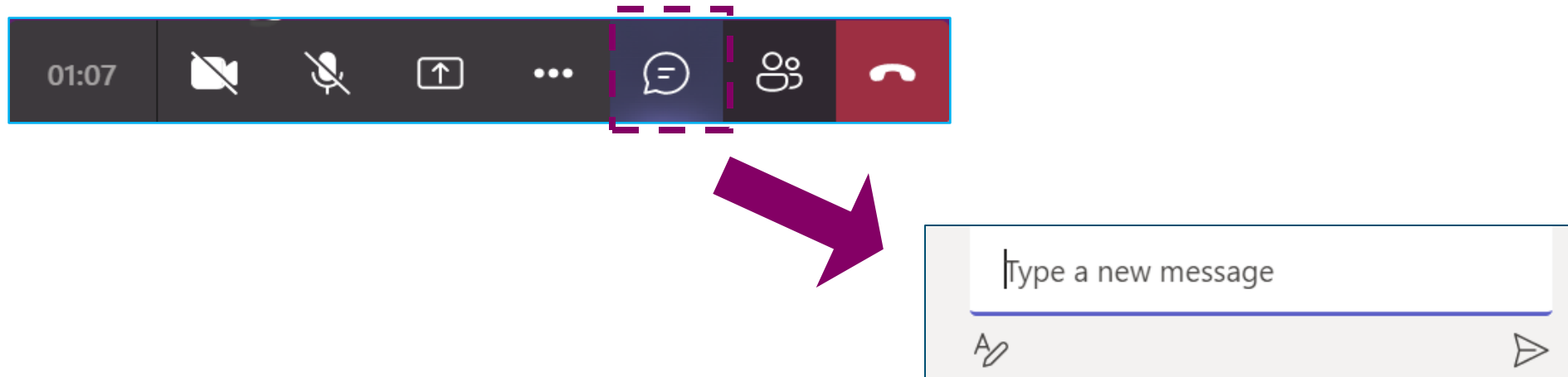
- Current main routes (others advertised throughout the year)
- AHRC SGSAH studentship (13 nominations).
  - **Deadline :** PhD applications will require to be submitted by no later than **14<sup>th</sup> November**, SGSAH scholarship applications to be mailed to [ecaresearchdegrees@ed.ac.uk](mailto:ecaresearchdegrees@ed.ac.uk) by 21<sup>st</sup> November
- ECA PhD Scholarship (4), College Research Award (1), Doctoral College Scholarship (1).
  - PhD application deadlines 20th January, scholarship application - 3<sup>rd</sup> February.
- Information on scholarships can be found here:
- [Scholarships and bursaries | Edinburgh College of Art](#)
- [Scholarships and Student Funding | The University of Edinburgh](#)





# Asking questions (Microsoft Teams)

- Type your question into the Chat Area



# Next steps...

<https://virtualvisits.ed.ac.uk/pg>



<https://edin.ac/student-chat-pg>



THE UNIVERSITY  
of EDINBURGH

**EDINBURGH**  
extraordinary futures await



# Contact details for follow-up questions

- We apologise if we did not get through all of your questions in the time allotted for this session. If you have further questions that have not been answered, please email: [futurestudents@ed.ac.uk](mailto:futurestudents@ed.ac.uk)
- *Alternatively, provide Programme/Department/Service/School/College contact details as appropriate*



# Thank you – click ‘Leave’ when the session ends

- Return to your ‘e-ticket’ to find and attend other sessions you’ve booked – by clicking on the button in the email we sent you...



## It's Day One!

Hi {{contact.full\_name.first\_name|case:camel}},

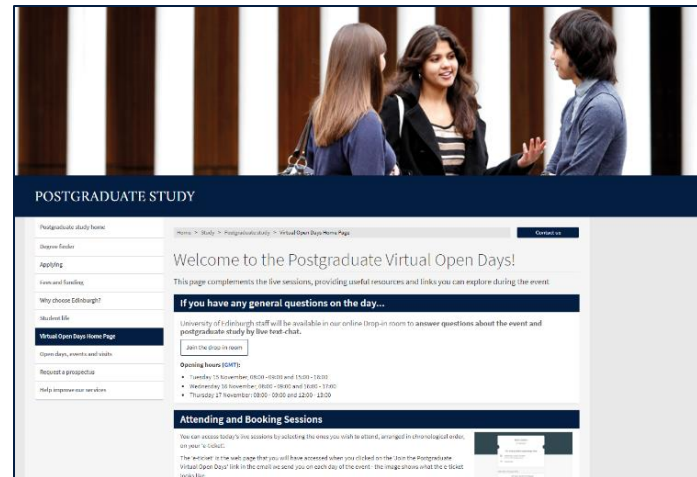
It is Day One of our Postgraduate Virtual Open Days! We are looking forward to welcoming you during the day.

### Joining the event

To access the event, use your 'ticket' link below. The sessions are listed in chronological order and the times shown are in Greenwich Mean Time (GMT). The link to join a session will appear 15 minutes before it starts.

[Virtual Open Days Ticket](#)

- ...and visit the event homepage:
- <https://edin.ac/3CymWA3>



THE UNIVERSITY  
of EDINBURGH

**EDINBURGH**  
extraordinary futures await





THE UNIVERSITY  
*of* EDINBURGH

# Thank you

Professor Ed Hollis  
[e.hollis@ed.ac.uk](mailto:e.hollis@ed.ac.uk)