



Welcome

What is a PhD and How to Apply

Professor Antony Maciocia

University Lead for Postgraduate Research

Professor Laura Bradley

Dean of Postgraduate Research, Arts, Humanities and Social Science

Kirsty Woomble

Head of Postgraduate Research Office, Arts, Humanities and Social Science

Professor Jamie Pearce

Dean of Postgraduate Research, Science and Engineering

Professor Paddy Hadoke

Director of Early Career Training, Medicine and Veterinary Medicine

This session will begin at: *9am GMT 12th November 2024*



THE UNIVERSITY
of EDINBURGH

**Open to
the world**

What is a PhD?





What is a PhD?

- Transition from learning through courses to engaging in research
- Transition to autonomous research
- Becoming an expert in the field
- Apprenticeship for a research career
- Training for industry and leadership



Outcomes

- The capability of pursuing original research making a significant contribution to knowledge or understanding in the field of study.
- Have adequate knowledge of the field of study and relevant literature.
- Show exercise of critical judgement with regard to both your work and that of other scholars in the same general field, relating particular research projects to the general body of knowledge in the field.
- Ability to present the results of the research in a critical and scholarly way.
- The thesis must represent a coherent body of work and
- it must contain a significant amount of material worthy of publication or public presentation.



Landing on the Moon:



Small Step → One Man

Giant Leap → Mankind

Getting a Ph.D.:



Giant Leap → One Person

Tiny,
Insignificant Step → Mankind

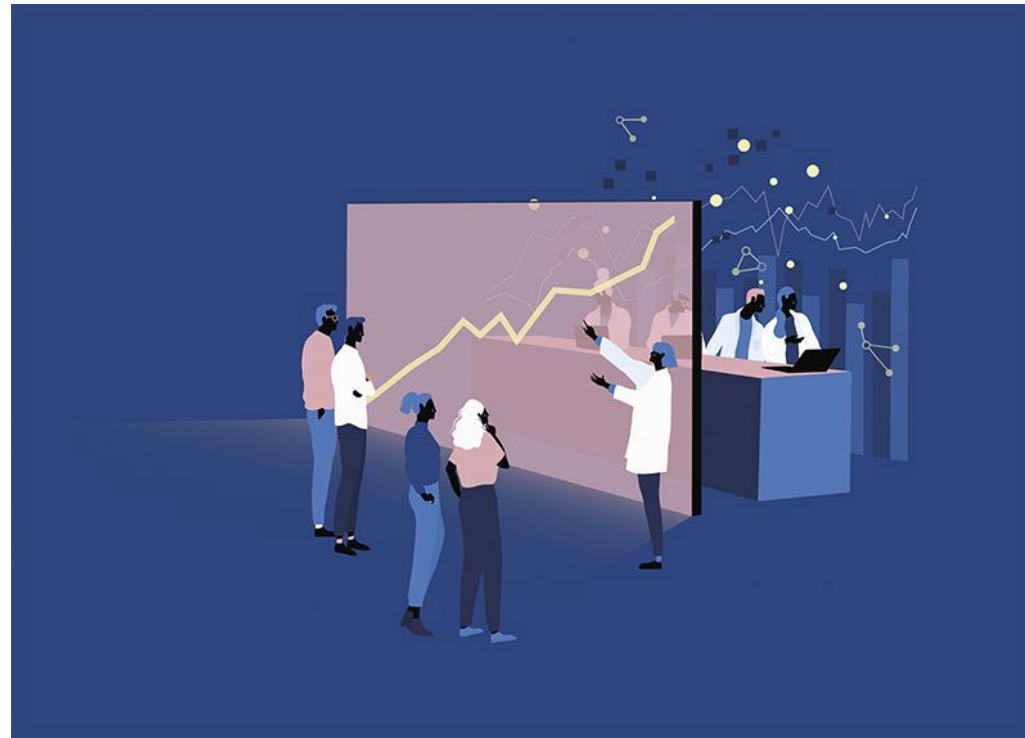


Types of Doctoral Programme

- “Standard” 3 year PhD (or part-time equivalent)
- “Enhanced” 3.5 or 4 year PhDs (or part-time equivalent)
- Industrial PhDs (EngD)
- Professional Doctorates (MD, DClinPsych)
- PhD “with Integrated Study”
 - MScR or MRes + “standard” PhD
- PhD by Distance

Types of Doctoral Programme

Some include internships



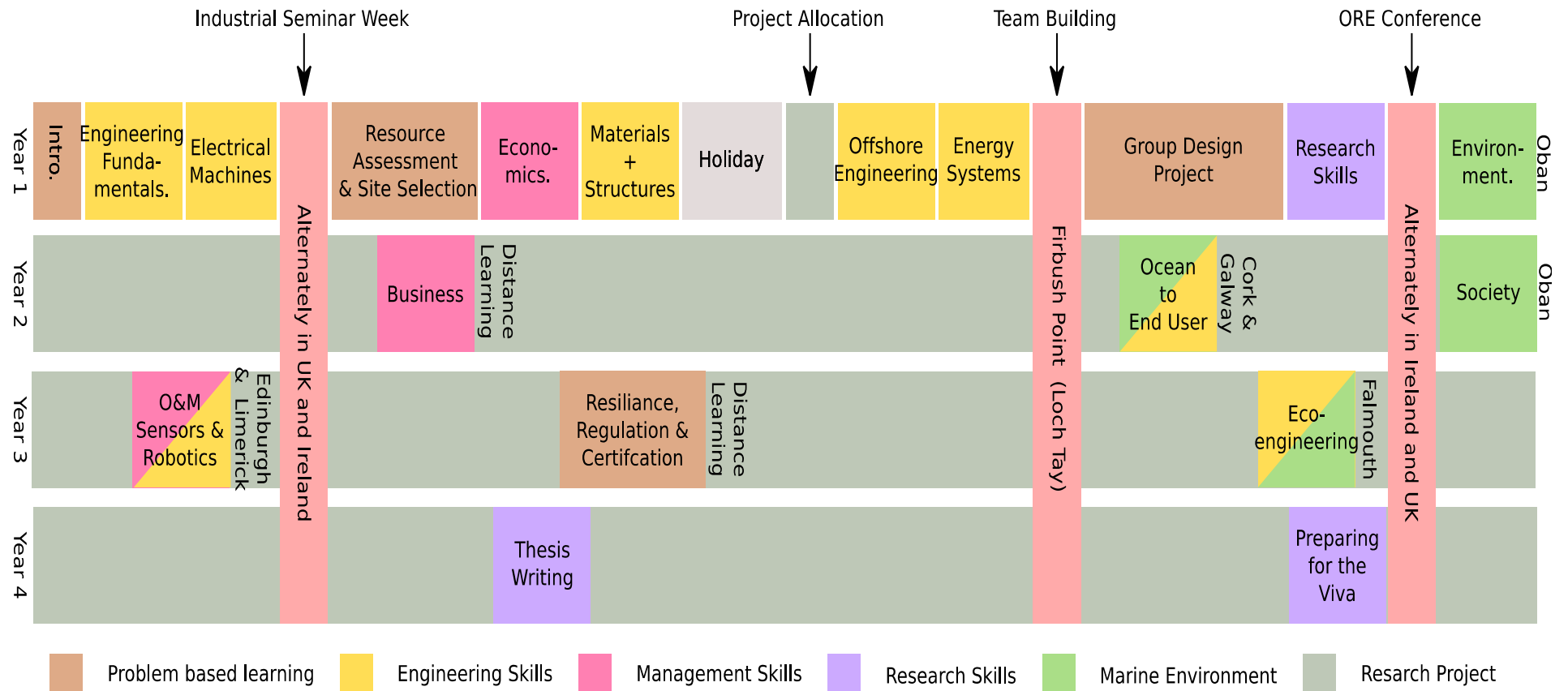


Content of Doctoral Programmes

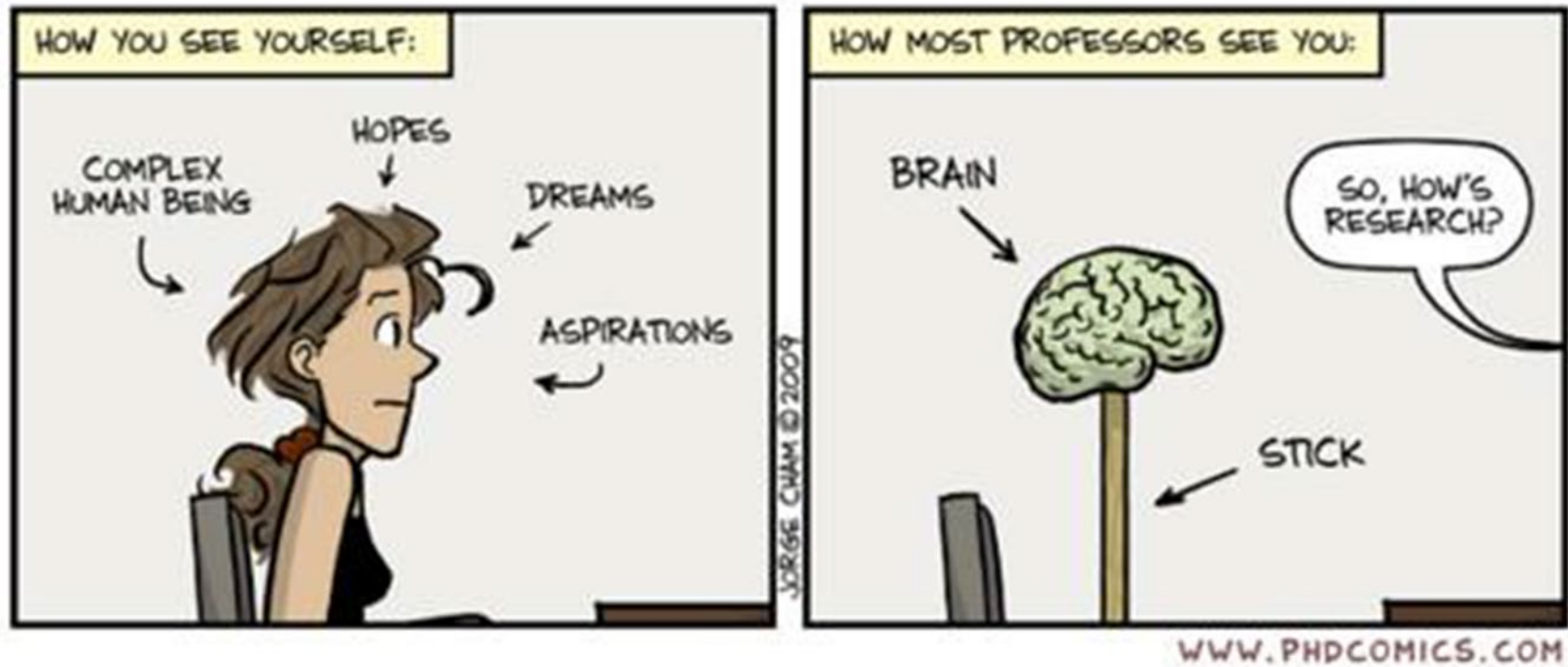
- Research projects from industry, supervisor or candidate.
- Taught components (don't usually “count” towards final degree)
- Optional industrial placements
- Capstone thesis project (or artefact)
- Viva

Content of Doctoral Programmes

Example programme, IDCORE EngD:



Undertaking a Doctorate



Support

Student Wellbeing Services (all available for research students)

- Student counselling
- Disability & Learning Support Service
- Chaplaincy
- The Advice Place (run by the Students' Association)

More information: [student wellbeing webpages](#)





Support

Peer support

- Student networks
- Clubs and societies
- Reading and seminar groups

More information: [Doctoral College](#) and School/ Deanery/ Institute pages



Support

Personal and professional development and training

- Institute for Academic Development
- Important for employability
- Sometimes integrated into programmes
- Equality and Diversity training, Ethics, Responsible Research and Innovation, Open Science, Data Science Skills, Writing Skills, Presentation Skills, ...

More information: [Doctoral College pages](#)



How do I apply?

- What do you want to study?
Where do you want to study?
How do you want to study?
- Find a supervisor (sometimes via projects: FindaPhD)
- Apply on-line directly to a University.

<https://www.ed.ac.uk/studying/postgraduate>



How do I apply?

For the application you will need

- 2 referees (project/dissertation supervisors are good)
- CV
- A statement about your research interests
- Certificates and transcripts from batchelors/masters study
- Funding intentions
- Optionally, a supervisor
- (For some programmes) A research project
- (if required) English language certification



How do I apply? – some tips

- It is not always necessary to have located a supervisor to apply, but it usually helps.
- For some disciplines you need to specify a project: either one suggested or one you prepare. For others, there is no need but you should indicate the areas you are interested in pursuing. Look for projects on FindAPhD.com or university web pages.
- Make sure the application sets out what you have studied and explains any research you might already have done (eg in a major dissertation).



How do I find a supervisor?

- Search university web sites for interesting research
- Ask your professors for recommendations
- Look for projects in FindAPhD.com
- Email potential supervisors
 - Send individual emails showing interest in their research
 - Be patient: they will probably receive lots of emails
 - No need to send to them a full application. Be brief



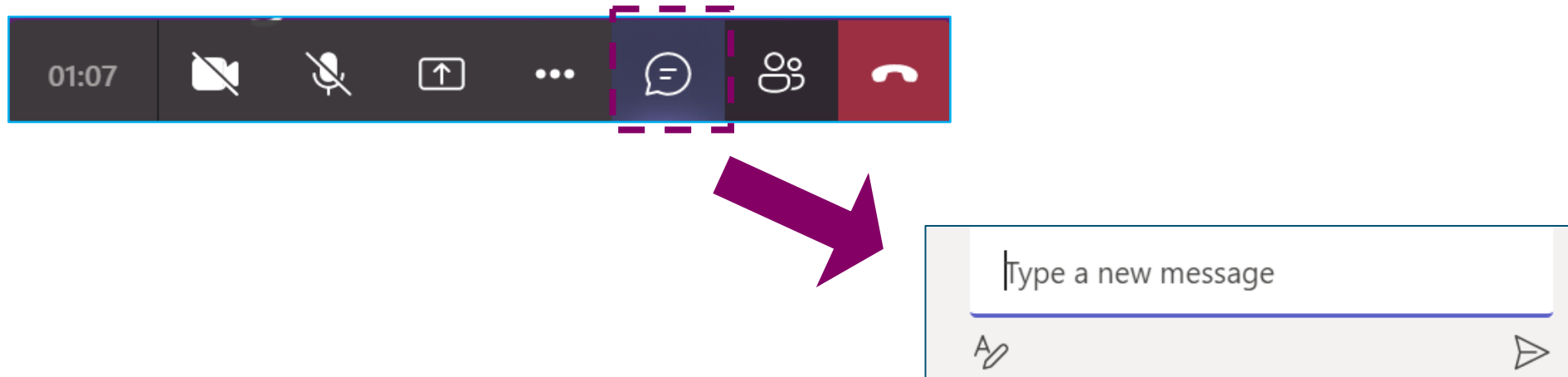
Links to Further Information

- [Doctoral College webpages](#)
- [Scholarship and funding pages](#)
- [Institute for Academic Development Pages](#)
- [Student wellbeing pages](#)
- [Code of Practice for supervisors and research students](#)



Asking questions (Microsoft Teams)

- Type your question into the Chat Area



Contact details for follow-up questions

- We apologise if we did not get through all of your questions in the time allotted for this session. If you have further questions that have not been answered, in the first instance contact the School nearest your interest.
- Alternatively, contact one of us directly:
 - a.maciocia@ed.ac.uk (College of Science & Engineering)
 - laura.bradley@ed.ac.uk (College of Arts, Humanities & Social Sciences)
 - Patrick.Hadoke@ed.ac.uk (College of Medicine & Veterinary Medicine)
 - Jamie.Pearce@ed.ac.uk (College of Science and Engineering)

Next steps...

<https://virtualvisits.ed.ac.uk/pg>



<https://edin.ac/student-chat-pg>



THE UNIVERSITY
of EDINBURGH

EDINBURGH
extraordinary futures await

Thank you – click ‘Leave’ when the session ends

- Return to your ‘e-ticket’ to find and attend other sessions you’ve booked – by clicking on the button in the email we sent you...



It's Day One!

Hi {{contact.full_name.first_name|case:camel}},

It is Day One of our Postgraduate Virtual Open Days! We are looking forward to welcoming you during the day.

Joining the event

To access the event, use your 'ticket' link below. The sessions are listed in chronological order and the times shown are in Greenwich Mean Time (GMT). The link to join a session will appear 15 minutes before it starts.

[Virtual Open Days Ticket](#)

- ...and visit the event homepage:
- <https://edin.ac/3CymWA3>



THE UNIVERSITY
of EDINBURGH

EDINBURGH
extraordinary futures await