



THE UNIVERSITY
of EDINBURGH

Library services and resources November 2024

Rowena Stewart and Jane Furness
Academic Support Librarians

EDINBURGH
extraordinary futures await

Our aim is to ensure you get the best from the Library, its collections, resources and services ... wherever you are.



THE UNIVERSITY
of EDINBURGH

EDINBURGH
xtraordinary futures await

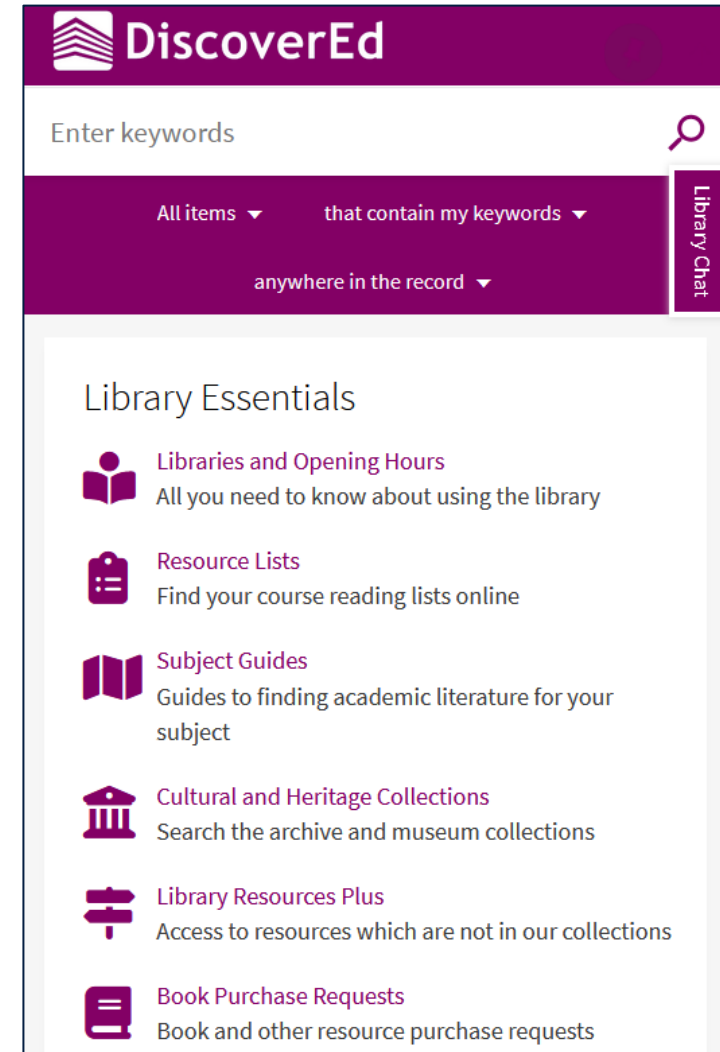
Connect you to the resources you need

Your University login provides access to just about all our licensed resources.

DiscoverEd is the name of the library catalogue.

- Place of record for what you can read from The Library.
- Has article level information too.
- Can search for resources beyond Edinburgh too.

<https://discovered.ed.ac.uk>



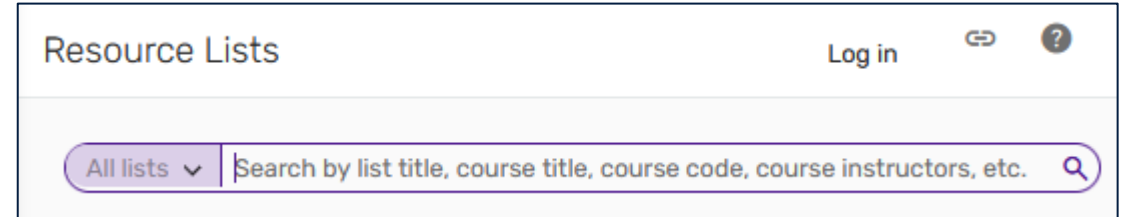
THE UNIVERSITY
of EDINBURGH

EDINBURGH
extraordinary futures await

Connect you to the resources you need

Resource Lists - Online reading lists:

www.ed.ac.uk/is/resource-lists



Subject Guides

www.ed.ac.uk/is/subject-guides

Curated guides connecting you to key resources and help for your area of study.



THE UNIVERSITY
of EDINBURGH

EDINBURGH
extraordinary futures await

Library Collection



THE UNIVERSITY
of EDINBURGH

EDINBURGH
extraordinary futures await

A taster of resource types and content

Reference resources

Include: *AccessEngineering, JoVE, Knovel, Oxford Reference Online, SAGE Research Methods*

Subject-specific resources

Include: *UpToDate, ARTstor, Kotobarabia Arabic e-Library collections, PsycINFO, psycTHERAPY, SciFinder, WestLaw, Digimap*

Tools to support your work

Include: *Cite Them Right Online, Covidence, EndNote desktop*

Skills development support

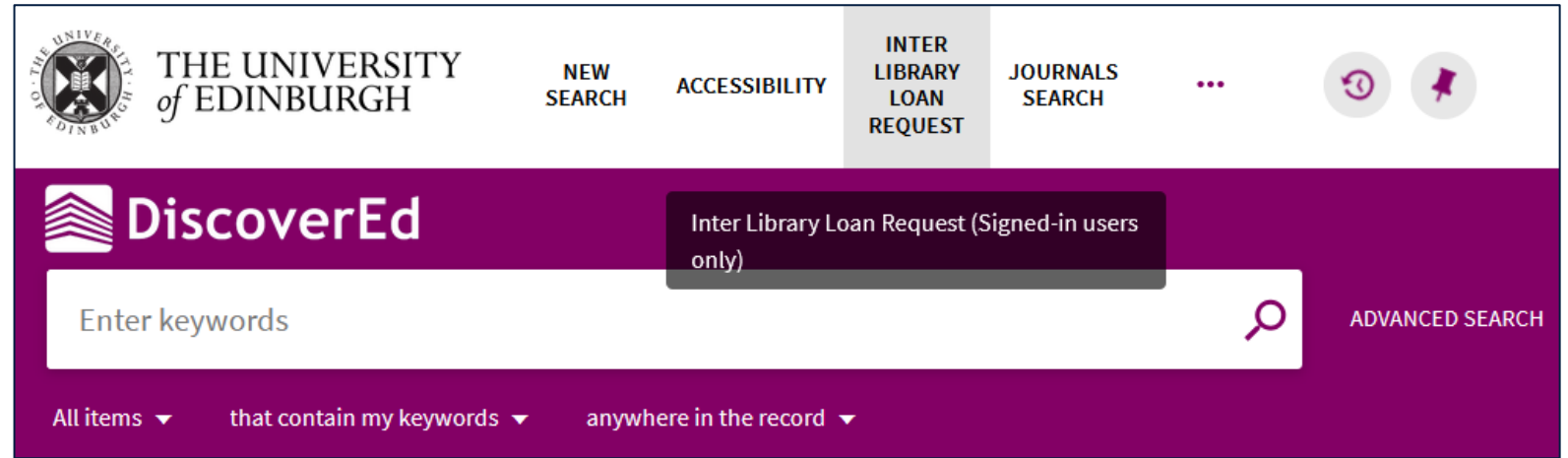
Include: *courses delivered in-person or online, self-paced learning materials, free access to LinkedIn Learning*



If we do not have what you need

Document delivery (Inter-Library Loan Service)

- Request items like articles or books not held by the Library



Request a Book Service

- Suggest new purchases for the Library



Heritage Collections

The University's cultural heritage collections:

- rare books
- archives and manuscripts
- art and musical instruments



<https://library.ed.ac.uk/heritage-collections>



THE UNIVERSITY
of EDINBURGH

EDINBURGH
extraordinary futures await

uCreate Makerspace



Specialist tools and technologies including 3D printing, 3D scanning, virtual reality, laser cutting, electronics and much more. We offer the equipment, training and support to help you make (almost) anything - and it's all free!

www.ucreatestudio.is.ed.ac.uk

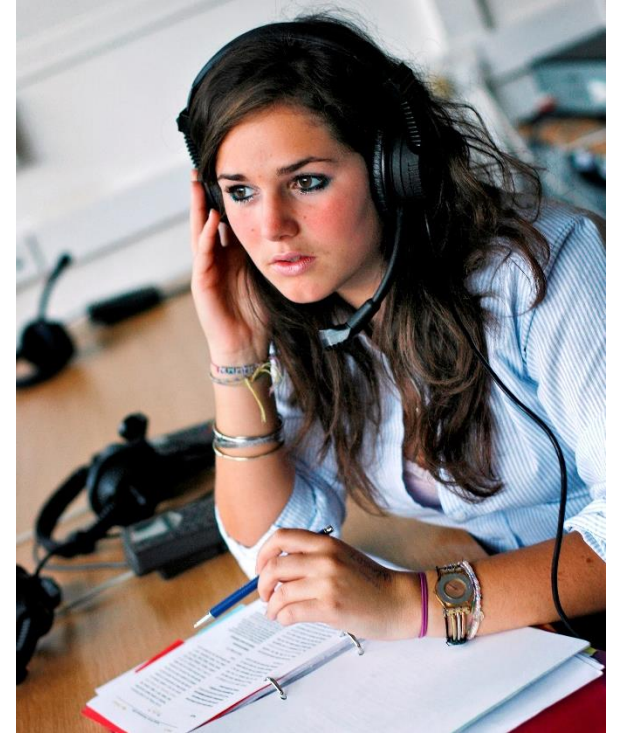


THE UNIVERSITY
of EDINBURGH

EDINBURGH
extraordinary futures await

Support while you are with us

- Start of year introduction sessions: generic and course-specific
- Tutorials & one-to-one support: Online or in-person
- “In your own time” courses and guidance.
- People to ask 24/7



Library Frequently Asked Questions

How many books can I borrow at once?

www.ed.ac.uk/is/library-borrowing

How do I find out more about the on-campus libraries?

www.ed.ac.uk/is/library-locations

How do I get help, either in-person or online?

[//library.ed.ac.uk/library-help](http://library.ed.ac.uk/library-help)

[//edhelp.ed.ac.uk/](http://edhelp.ed.ac.uk/)

[//library.ed.ac.uk/academic-support-librarians](http://library.ed.ac.uk/academic-support-librarians)

Library help

There are various services providing library help and support.

EdHelp

EdHelp provides Library help and also help with enquiries regarding Student Finance, IT Support and Student Administration. This service is available to University of Edinburgh staff, students and alumni online via the EdHelp portal. You can also visit EdHelp on-campus at all our library Helpdesks from 1st June 2023. For locations, please see below.

EdHelp

Library helpdesks

There are Library helpdesks at each of our library sites. This service is available to University of Edinburgh staff, students, alumni and all other users.

Library Locations

Library Chat



THE UNIVERSITY
of EDINBURGH

EDINBURGH
extraordinary futures await

All the links

DiscoverEd - the library catalogue:

<https://discovered.ed.ac.uk>

Resource Lists - Online reading lists:

www.ed.ac.uk/is/resource-lists

Library Subject Guides – including contact details
for the Academic Support Librarians

www.ed.ac.uk/is/subject-guides

Heritage Collections:

<https://library.ed.ac.uk/heritage-collections>

Makerspace:

www.ucreatestudio.is.ed.ac.uk

Borrowing:

<https://library.ed.ac.uk/using-library/borrowing-a-book>

All the libraries:

<https://library.ed.ac.uk/using-library/lib-locate>

Library help:

<https://library.ed.ac.uk/library-help>



THE UNIVERSITY
of EDINBURGH

EDINBURGH
xtraordinary futures await

<https://virtualvisits.ed.ac.uk/pg>

A detailed, colorful map of Edinburgh, Scotland, showing the city's layout, major roads, and landmarks. The map is oriented with the Firth of Forth at the top. Key features include:

- Water Bodies:** The Firth of Forth at the top, the River Forth flowing through the city, and the Pentlands to the south.
- Landmarks and Buildings:** The Royal Palace, St. Giles' Cathedral, the Scottish Parliament, the Edinburgh Castle, and the Edinburgh City Hall.
- Parks and Green Spaces:** Holyrood Park, the Meadows, and the City Bypass.
- Streets and Roads:** Major roads like the A1, A7, and A9 are shown, along with numerous local streets.
- Transportation:** The Edinburgh Trams system is depicted, along with the Edinburgh Airport and the Edinburgh City Bypass.
- Other Features:** The map includes various smaller landmarks, such as the Edinburgh Zoo, the Edinburgh Museum, and the Edinburgh City Hall.



Contact details for follow-up questions

We apologise if we did not get through all of your questions in the time allotted for this session. If you have further questions that have not been answered, please email: futurestudents@ed.ac.uk

- Alternatively, please get in touch with the Academic Support Librarian for the subject area relevant to you.

<https://library.ed.ac.uk/academic-support-librarians>



THE UNIVERSITY
of EDINBURGH

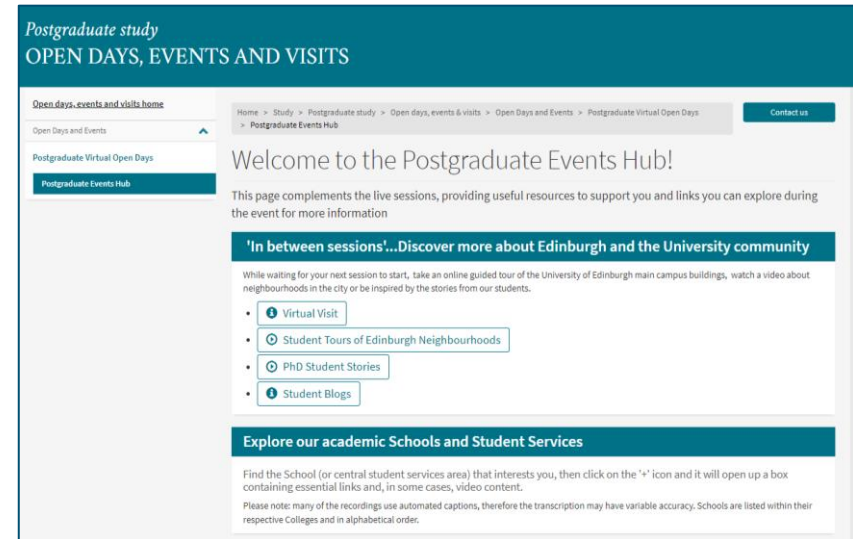
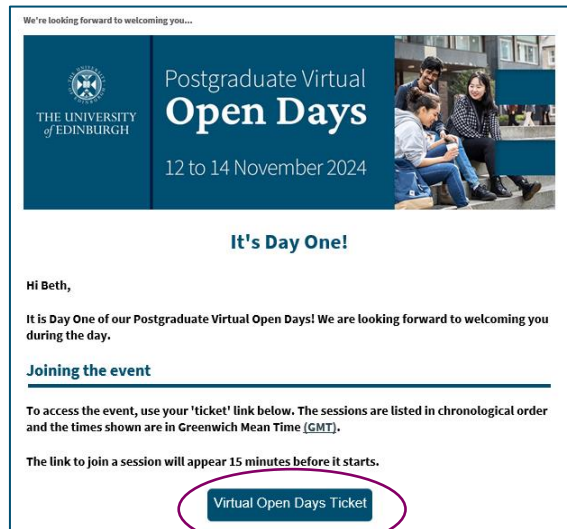
EDINBURGH
extraordinary futures await

Thank you – click ‘Leave’ when the session ends

- Return to your ‘e-ticket’ to find and attend other sessions you’ve booked – by clicking on the button in the email we sent you...

...and visit the events hub:

<https://edin.ac/4gZuP3G>



THE UNIVERSITY
of EDINBURGH

EDINBURGH
extraordinary futures await



THE UNIVERSITY
of EDINBURGH

Thank you

Rowena Stewart and Jane Furness
Academic Support Librarians