



THE UNIVERSITY  
*of* EDINBURGH

# MA Interior, Architectural and Spatial Design

Dave Loder November 2024

**EDINBURGH**  
xtraordinary futures await

# Recording



- Today's session is being recorded
- Any information that you provide during a session is optional and in doing so you give us consent to process this information
- If you don't want your question or name read out in public, you can email your question to [Dave.Loder@ed.ac.uk](mailto:Dave.Loder@ed.ac.uk)
- Please note - a few attendees' names may be visible in the recording, if it is important that your name not be visible in the recording, please exit the session and re-enter using an incognito browser and typing in a pseudonym for yourself





THE UNIVERSITY  
*of* EDINBURGH

# MA Interior, Architectural and Spatial Design



Dave Loder November 2024

**EDINBURGH**  
xtraordinary futures await



# What is MA IASD?

- The MA Interior, Architectural and Spatial Design programme is within the College of Arts, Humanities and Social Sciences.
- It is one of the post graduate programmes in the Edinburgh College of Art
- It is part of the Edinburgh School of Architecture and Landscape Architecture (ESALA)





# Where are we?



THE UNIVERSITY  
of EDINBURGH

**EDINBURGH**  
extraordinary futures await



Where are we?

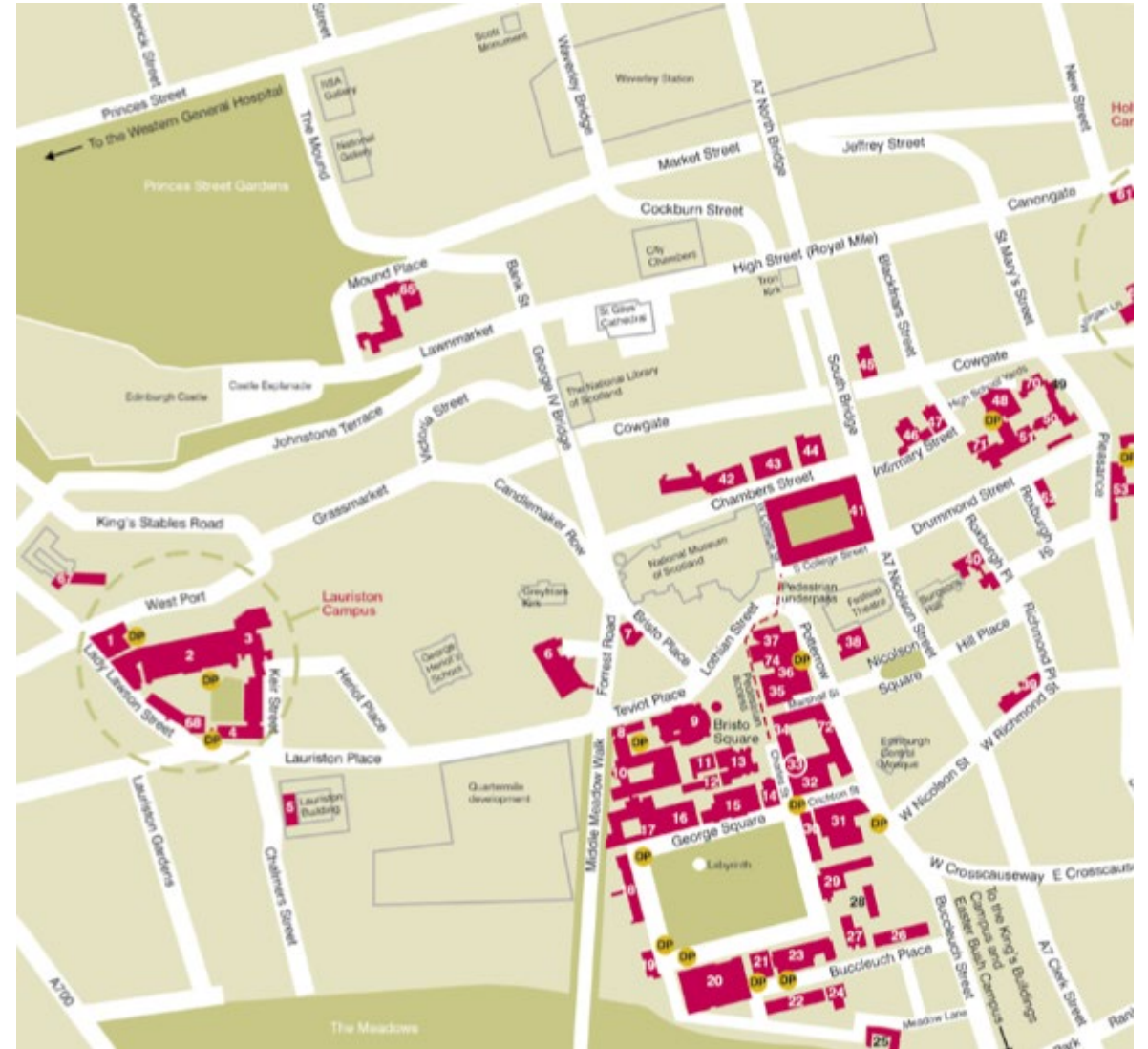


THE UNIVERSITY  
of EDINBURGH

**EDINBURGH**  
extraordinary futures await



# Where are we?



THE UNIVERSITY  
of EDINBURGH

**EDINBURGH**  
extraordinary futures await



# What are our aims?

- The main aim of this programme is to support you in establishing your own definitions and approaches to the diverse and contested subjects of interior, space and design.
- Addressing and questioning current spatial, interior and architectural theory, alongside the development of creative design projects, you will develop the skills needed for you to practice that definition.



# What is our programme structure?

Semester 1  
(September - December)

Semester 2  
(January - May)

Semester 3  
(May - August)

**Reading Interiors**

\_\_\_\_\_ •

20 Credits

\_\_\_\_\_

20 Credits

60 Credits

\_\_\_\_\_

edits

\_\_\_\_\_

20 Credits



THE UNIVERSITY  
of EDINBURGH

**EDINBURGH**  
extraordinary futures await

# What happens each year?

- City-as-Lab: Each year we pick a building and a situation in Edinburgh, often one that belongs to a key institution, as a site for exploration through design.
- Reading Interiors, Adapting Interiors, Connecting Interiors and Intersections then use this site as a basis for the design projects related to these courses enabling you to explore the potential of the site through a number of lenses.





# Previous projects: Old College/New students



THE UNIVERSITY  
of EDINBURGH

**EDINBURGH**  
extraordinary futures await



# Previous projects: Rethinking Art School



THE UNIVERSITY  
of EDINBURGH

**EDINBURGH**  
extraordinary futures await

# Previous Projects: Museum Community/Community Museum



THE UNIVERSITY  
of EDINBURGH

**EDINBURGH**  
extraordinary futures await



# Now: Storied Edinburgh/George IV Bridge



THE UNIVERSITY  
of EDINBURGH

**EDINBURGH**  
extraordinary futures await

# Reading Interiors

This course will introduce you to the current theoretical debates in interiors through readings and seminars. You will also produce a series of artefact responses to the space in various mediums of your choice.





# Reading Interiors



THE UNIVERSITY  
of EDINBURGH

**EDINBURGH**  
extraordinary futures await



# Reading



THE UNIVERSITY  
*of* EDINBURGH

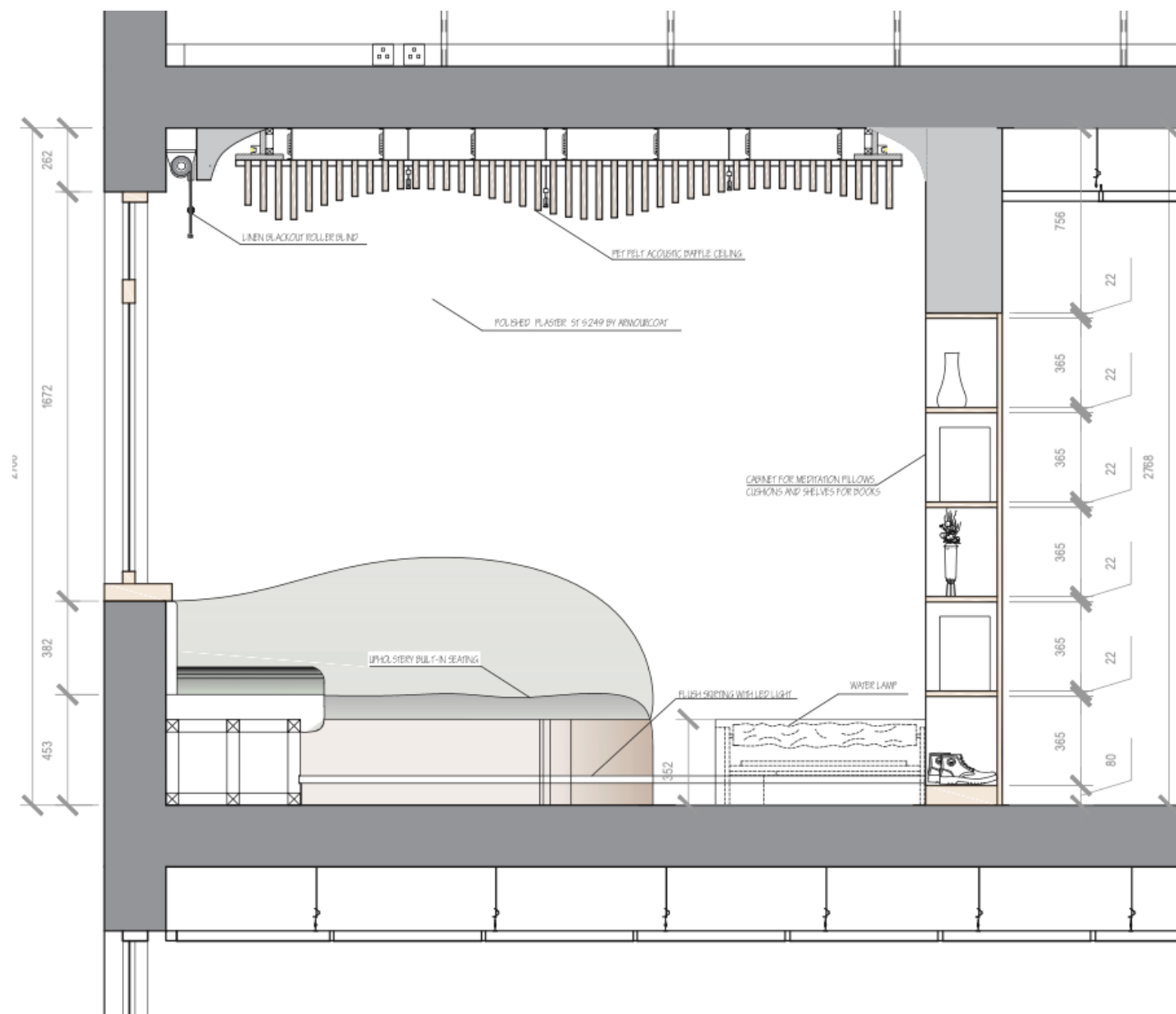
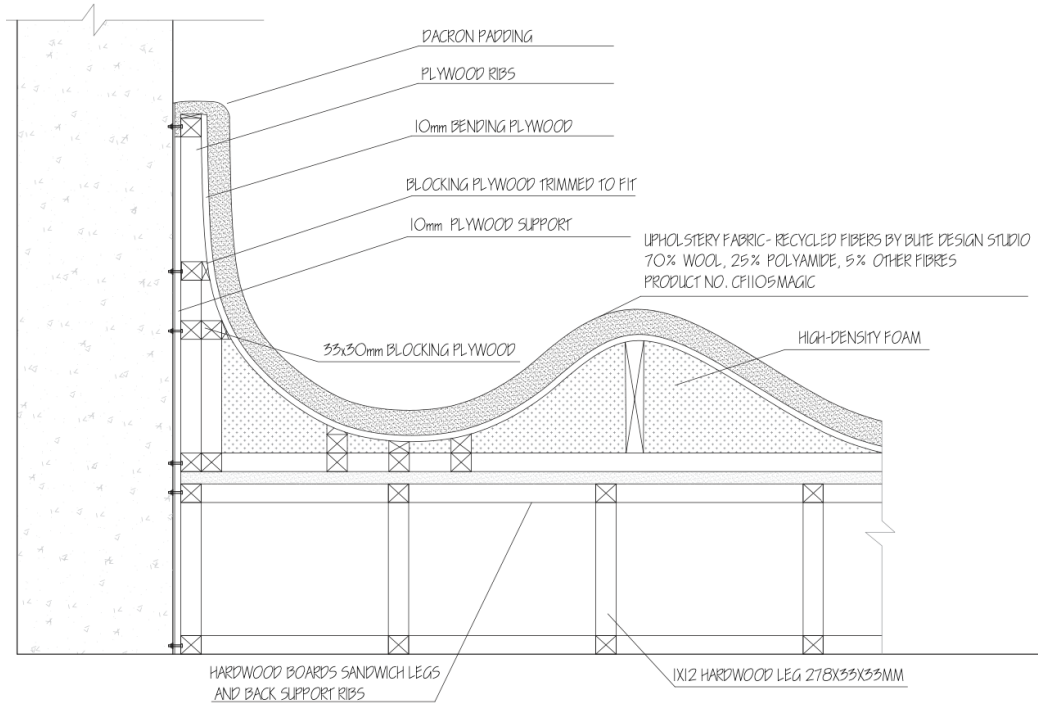
**EDINBURGH**  
extraordinary futures await

# Adapting Interiors

This course will focus on the insertion of a small-scale element into the host building and the detail design of this micro element. Through research of the building and the theme of the course you will provide justification for your proposals.



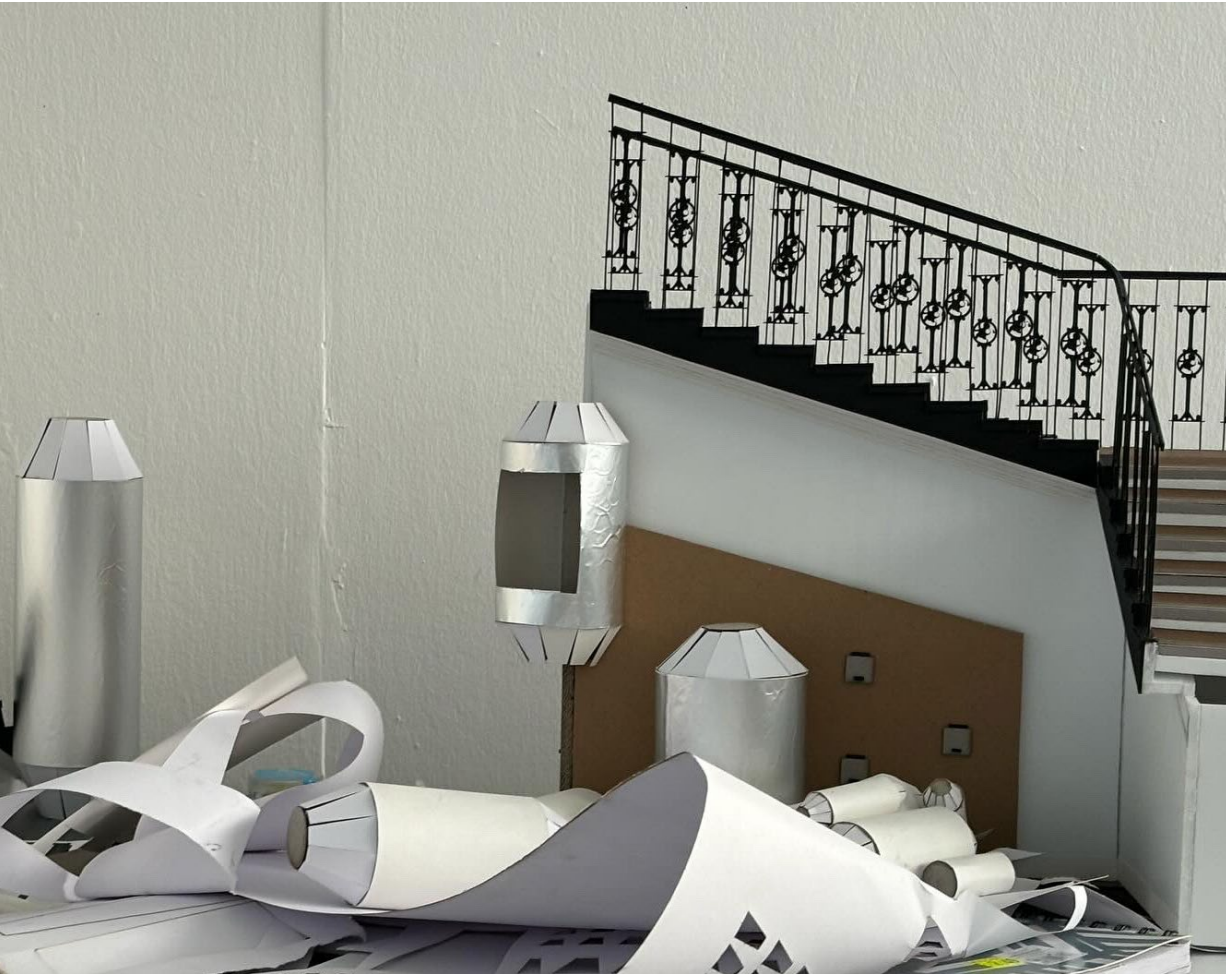
# Adapting Interiors



THE UNIVERSITY  
of EDINBURGH

**EDINBURGH**  
extraordinary futures await

# Adapting Interiors

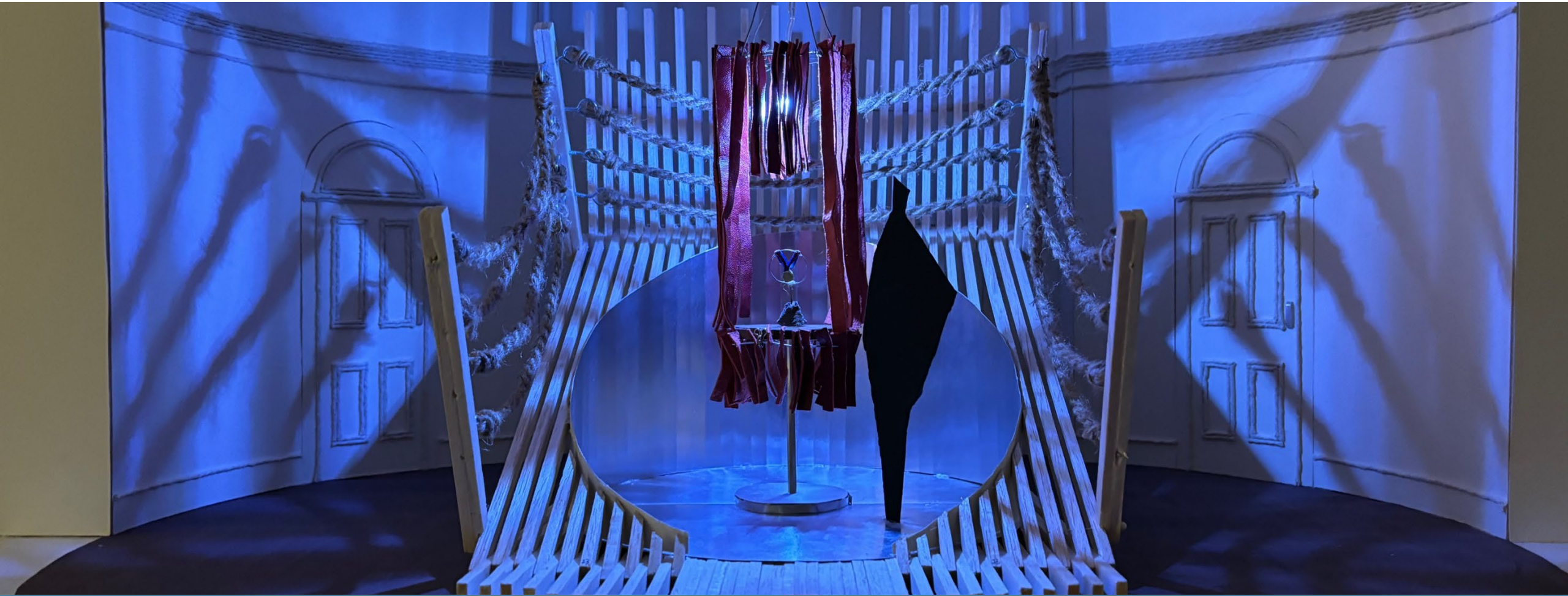


THE UNIVERSITY  
of EDINBURGH

**EDINBURGH**  
extraordinary futures await



# Adapting Interiors



THE UNIVERSITY  
of EDINBURGH

**EDINBURGH**  
extraordinary futures await

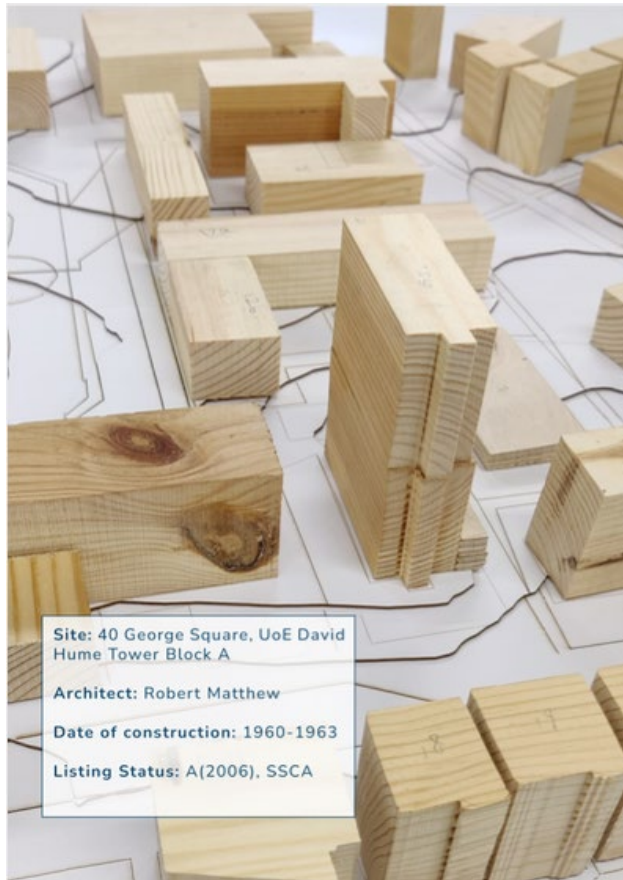


# Connecting Interiors

In this course we will investigate the host building at a macro scale. Using the theories around urban master planning you will discover the context of the building within the wider Edinburgh and use this to justify and produce a masterplan of an outline proposal for a new use for part of the host building.

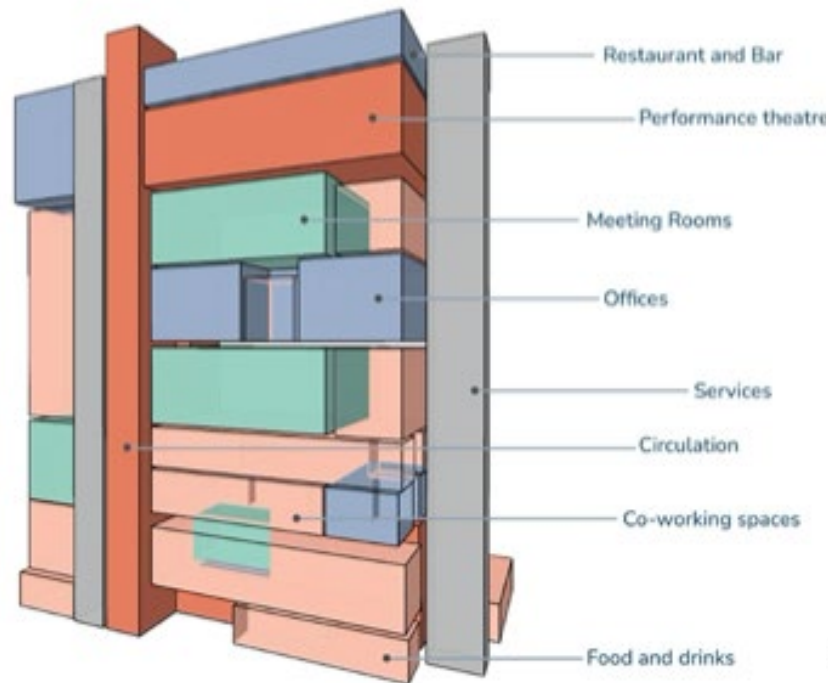


# Connecting Interiors



Zoning of spaces, User group

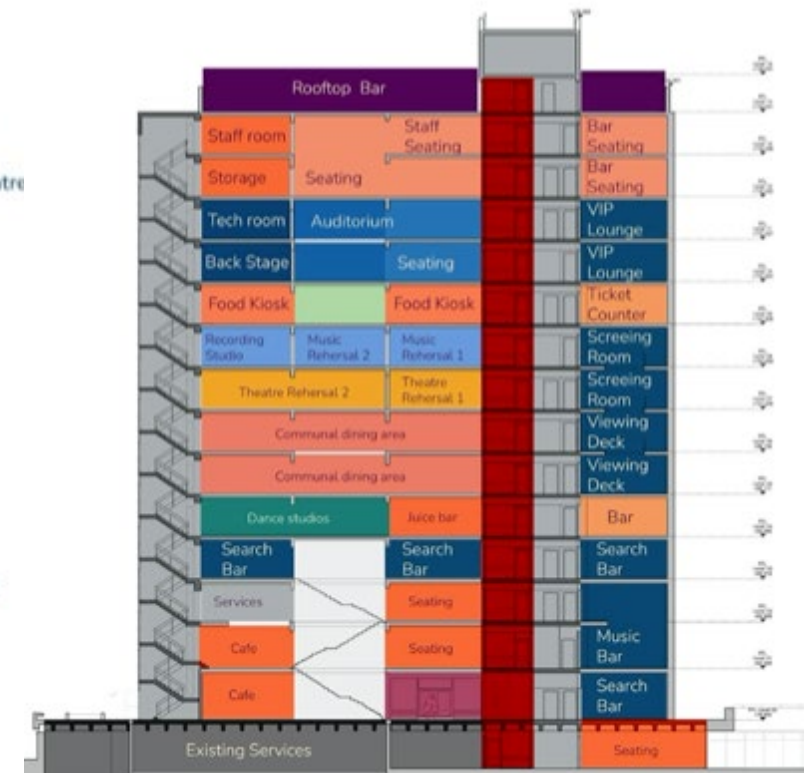
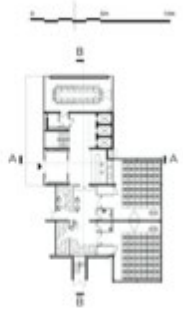
Public Semi-Public Semi-Private Private



SECTION A-A'  
Spatial Planning

LEGEND

- Cafe and seating
- Search Bar
- Reception
- Communal Dining
- Dance Studios
- Theatre Space
- Music Studios
- Auditorium
- Vertical Circulation
- Existing Services
- Landscape



THE UNIVERSITY  
of EDINBURGH

EDINBURGH  
extraordinary futures await



## A woman with dark hair and glasses, wearing a green sweater, stands in a modern architectural studio. She is looking at a large, complex architectural model of a building complex, which is displayed on a wall. The model features various colored blocks and structures, including a prominent yellow and red section. To her left, a large window offers a view of a cityscape. In the foreground, a table holds several architectural drawings and a small model. The room is well-lit with natural light from the window and overhead pendant lights.



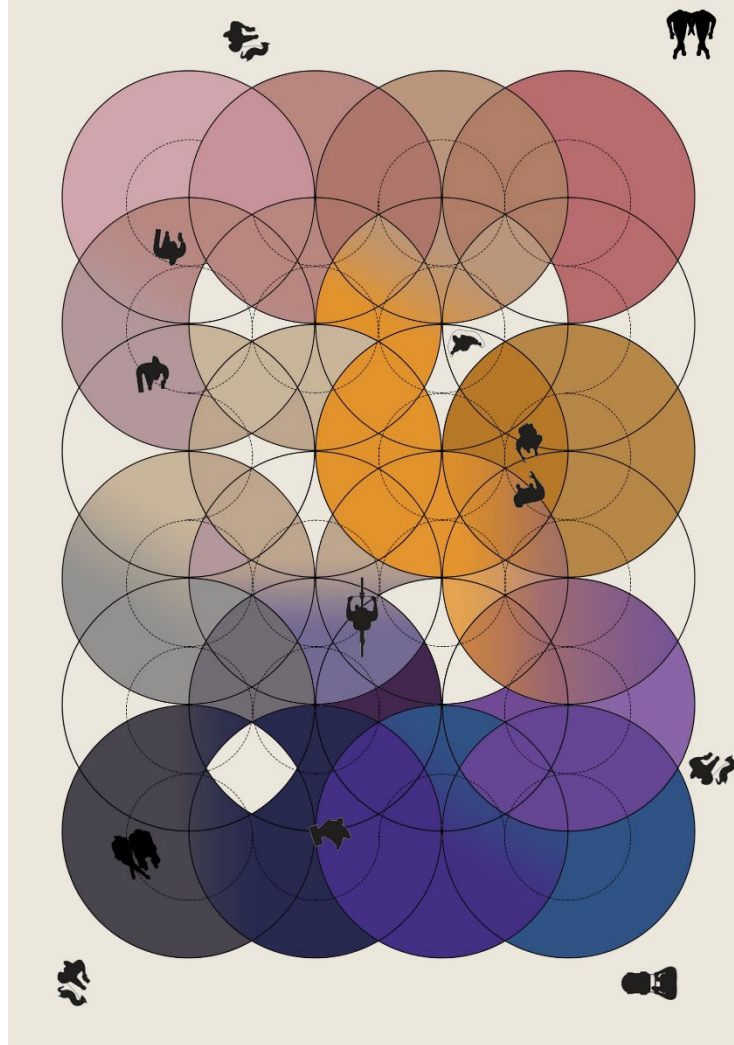
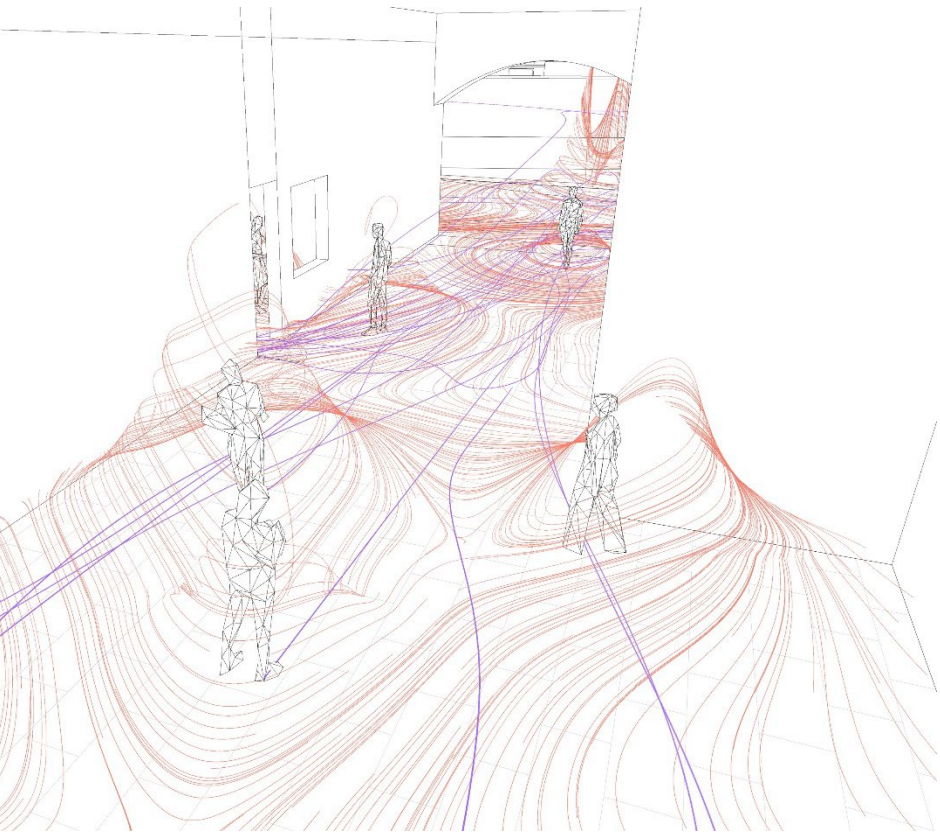
# Intersections

In the summer semester you will undertake the following;

- A synthesis project that either develops your Adapting or Connecting design project, creates a hybrid combination of the two, or proposed a new creative project set within the host building.
- A group project around the theme of display – in particular in relation to your work as a Master.
- A professionally produced portfolio of artefacts, images and text that demonstrates your learning through the programme. It must contain 3000 words of critically reflective text that explains what you have learnt and where you place yourself in the discipline of Interior, Architectural and Spatial Design.



# Intersections



THE UNIVERSITY  
of EDINBURGH

**EDINBURGH**  
extraordinary futures await



# Intersections



THE UNIVERSITY  
of EDINBURGH

**EDINBURGH**  
extraordinary futures await



# How do we work?

- Staff are here to guide not lead. We support you in evolving your own definition of what is interior, architectural and spatial design.
- We are a cohort of around 50 – 60 students from all backgrounds and cultures.
- We communicate in English and students are expected to engage in written and verbal discussions and critical analysis of their work and that of their colleagues throughout the programme.
- We expect you to have all relevant computer skills such as CAD, sketchup , 3D visualization programmes etc.





# Where do we work?

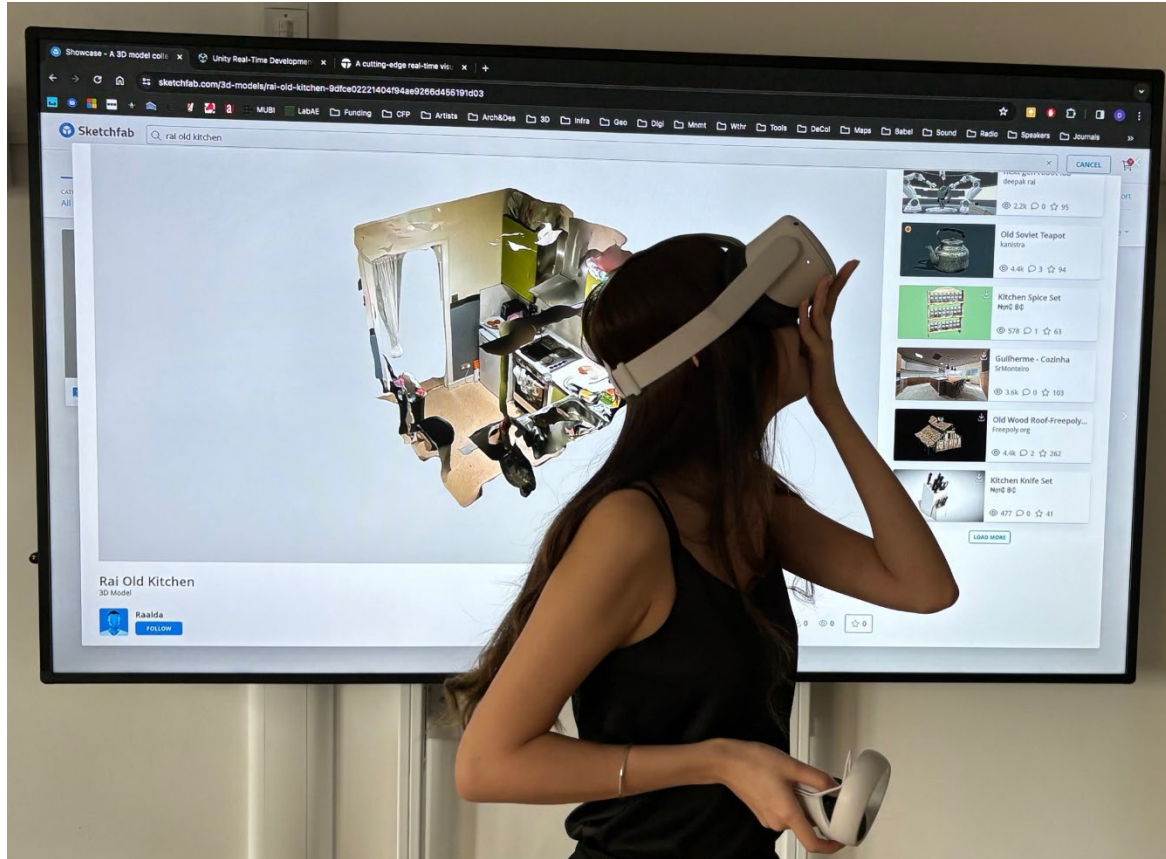


THE UNIVERSITY  
of EDINBURGH

**EDINBURGH**  
extraordinary futures await



# Where do we work?



THE UNIVERSITY  
of EDINBURGH

**EDINBURGH**  
extraordinary futures await





THE UNIVERSITY  
of EDINBURGH



# Where do we work?



THE UNIVERSITY  
of EDINBURGH

**EDINBURGH**  
extraordinary futures await



# What facilities do we have?

- There is a design library in Evolution House and an art and architecture library in Chambers Street. You also can access any of the other university libraries such as the Main Library in George Square.
- There are various workshops for you to use such as wood workshop, metal workshop, casting workshop, photography studio, digital textile printing etc.
- There is a UCreate hub in the main library where you can access a variety of digital making equipment.
- There are various sites of laser cutters, CNC machines, 3D printers etc.
- Computer labs with on campus and remote access to all types of programmes.
- Training and induction sessions are available for all.



# What is Interior Lab?

- Initiative set up in 2016
- All current undergraduate Interior Design and MA IASD students are members
- Free events, talks, building visits etc around themes of interiors and architecture
- Manufacturers talks
- Alumni talks
- Staff and PhD students also discuss their research.
- You can follow us on Instagram at @interior\_lab\_eca



# What else is going on?

ArcSoc – weekly lectures on a Friday evening from renowned local, national and international architects and designers.

Architectural history and theory seminar series

Architectural conservation talks series

Arch Ball

ESALA climate action now (ECAN) – student and staff group in ESALA aiming to tackle the climate emergency in pedagogy, research and community practices.

IASD is also part of Interior Educators – a national charity comprised of well established interior programmes from across the UK, that provides a forum for debate and the exchange of ideas and practice affecting the education of designer of interior space.



THE UNIVERSITY  
of EDINBURGH

**EDINBURGH**  
extraordinary futures await

# How can I find out more?

- Follow us on Instagram: @interior\_lab\_eca
- See the work of last years graduation students

<https://www.graduateshow.eca.ed.ac.uk/programme/interior-architectural-and-spatial-design-ma>

- Publication from MA IASD 23/24 Intersections:

[https://issuu.com/esala.eca/docs/2023-24\\_ma\\_interior\\_architecture\\_and\\_spatial\\_desi](https://issuu.com/esala.eca/docs/2023-24_ma_interior_architecture_and_spatial_desi)

- Work from previous cohorts also in Dezeen in 2020

<https://www.dezeen.com/2020/09/25/eca-edinburgh-college-of-art-interiors-graduates-school-shows/>





# Contact details for follow-up questions

- We apologise if we did not get through all of your questions in the time allotted for this session. If you have further questions that have not been answered, please email: [futurestudents@ed.ac.uk](mailto:futurestudents@ed.ac.uk)
- Or, contact us directly in the department on [Dave.Loder@ed.ac.uk](mailto:Dave.Loder@ed.ac.uk)



Thank you – click ‘Leave’ when the session ends



THE UNIVERSITY  
*of* EDINBURGH

**EDINBURGH**  
extraordinary futures await





THE UNIVERSITY  
*of* EDINBURGH

# Thank you

Dave Loder, Programme Director MA IASD

[Dave.Loder@d.ac.uk](mailto:Dave.Loder@d.ac.uk)