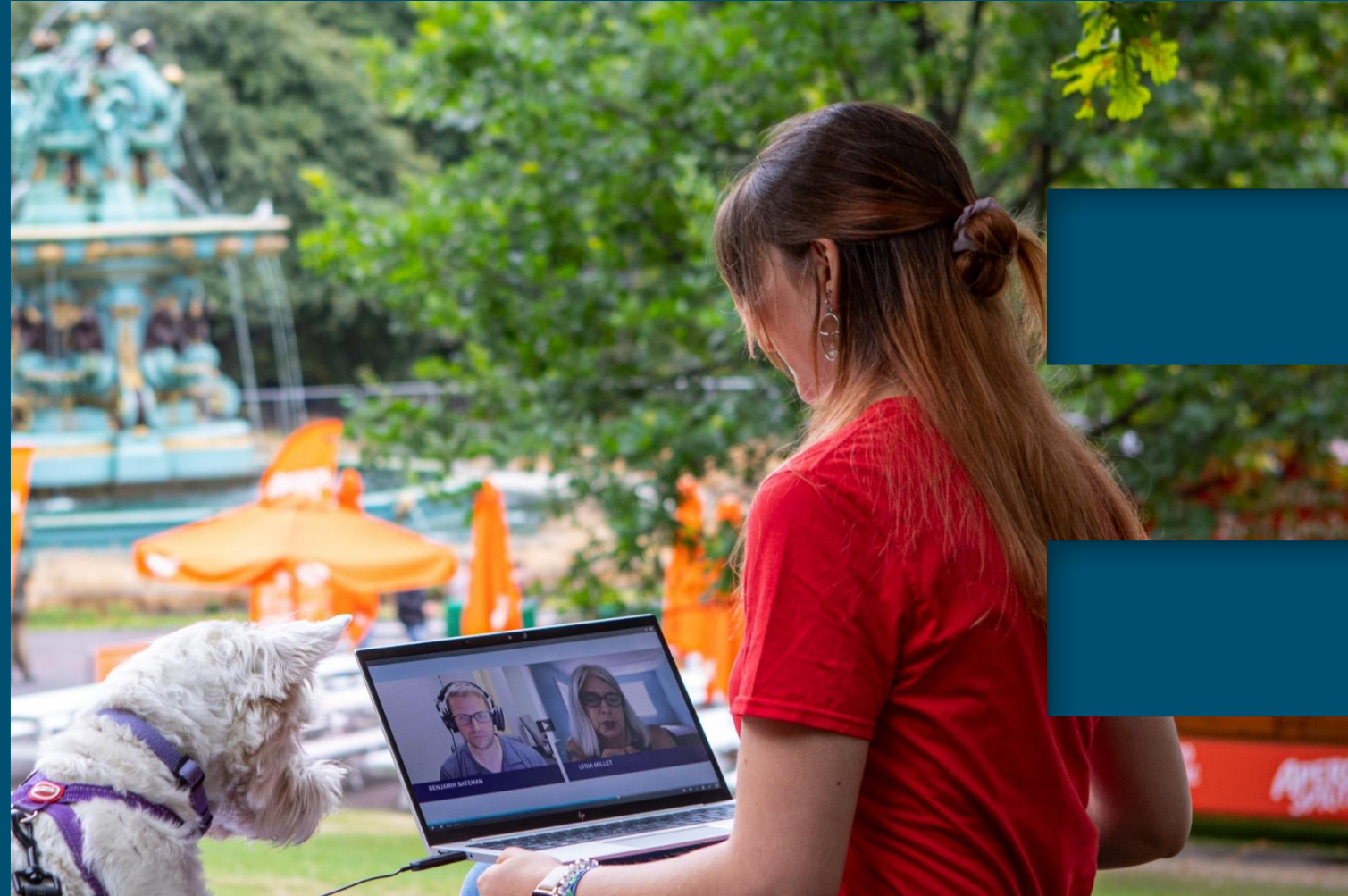


Postgraduate On-campus Open Days 2024

Dr Elizabeth Stevenson



MScR Science Communication, Public Engagement and Informal Learning

- 1year full time beginning in September
- Designed for those who wish to go on to a PhD.
(In some countries, a PhD is essential to progress in a career)
- May wish to pursue an academic career in science communication



MSc Science Communication and Public Engagement

- 1 year full time beginning in September
- Designed for those who wish to become science communicators or public engagement practitioners
- Placements and a range of science communication and public engagement experiences



MScs Science Communication and Public Engagement

Note that we refer to the MSc as a **programme** and the individual units are **courses**



THE UNIVERSITY
of EDINBURGH

EDINBURGH
xtraordinary futures await

MScR Science Communication, Public Engagement and Informal Learning

- 3 x 20 credit courses in semester 1
- 2 x 20 credit courses in semester 2 (research skills)
- Dissertation from April (4 months)



MSc Science Communication and Public Engagement

- 2 x 20 credit courses and 2 x 10 credit courses in semester 1
- 1 x 20 credit course and 4 x 10 credit courses in semester 2
- Dissertation from May (3 months)



MScs

All assessment in in-course assessment i.e.no exams.

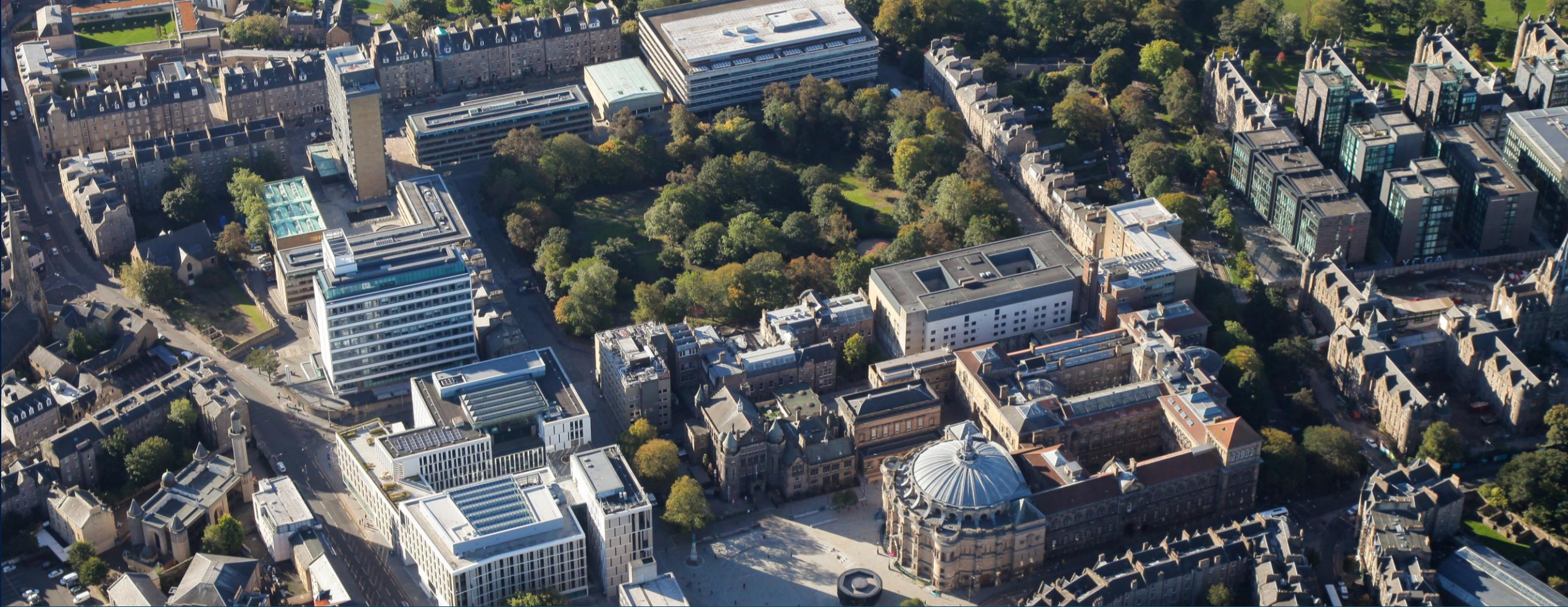
All teaching is seminar style teaching

International cohorts of students (around 20 per year)





THE UNIVERSITY
of EDINBURGH



EDINBURGH
extraordinary futures await