



THE UNIVERSITY *of* EDINBURGH  
The Royal (Dick) School  
of Veterinary Studies

---

# Applying for Veterinary Studies



**2016**  
Entry

“

I know I will graduate from a vet school with a world-class reputation that has fully prepared me for life as a veterinarian.

Samantha Miles  
1st year BVM&S Veterinary Medicine  
Graduate Entry Programme

”

# Contents

Overview	2
Programme Overview	4
Programme Structure and Curriculum	6
Academic Requirements	
The 5-year BVM&S D100 programme for Funded Candidates	7
The 5-year BVM&S D100 programme for Graduate and International applicants	10
The 4-year BVM&S D102 programme for Graduate applicants	12
Frequently Asked Questions	14
Non-Academic Requirements	
Non-Academic Requirements for all UCAS applicants	16
Frequently Asked Questions	18
UCAS	
How to complete Your UCAS Application	20
Guidance for Referees	21
Frequently Asked Questions	22
VMCAS (for US and Canadian graduate applicants only)	
Veterinary Medical College Application Service (VMCAS)	23
How to complete Your VMCAS	25
Frequently Asked Questions	26
Other things to consider	28
Widening Participation	30
General - Frequently Asked Questions	31
Applicants with Disabilities	34
How we select	35
What happens after I apply?	36
Admissions Process	38
Visiting the University	40
Our contact details	41
How to find us	42
Other useful contacts	43



DUGALD STEWART

# Welcome

Welcome to our booklet specifically designed to give you as much information as possible about the application process for Veterinary Medicine (BVM&S) at the University of Edinburgh. We aim to explain what we are looking for and clarify what can often be a daunting process, so you can make an informed choice as to whether Edinburgh Veterinary School is the School for you.

Please watch our film for an insight into The Royal (Dick) School of Veterinary Studies via the following link:

[www.ed.ac.uk/schools-departments/vet/about/vid-welcome](http://www.ed.ac.uk/schools-departments/vet/about/vid-welcome)

*The Undergraduate Admissions Team*



# Overview

## Why choose Veterinary Medicine at the University of Edinburgh?



We have Full Accreditation from the American Veterinary Medical Association (AVMA), the Royal College of Veterinary Surgeons (RCVS) and the European Association of Establishments for Veterinary Education (EAEVE)



The Degree of Bachelor of Veterinary Medicine and Surgery (BVM&S) is the equivalent of the North American Doctor of Veterinary Medicine (DVM) and has the same standing worldwide



Over £100 million has been invested in our Easter Bush Campus to develop state-of-the-art teaching facilities, laboratories and clinics

The Royal (Dick) School of Veterinary Studies is the UK's top school accredited by the Royal College of Veterinary Surgeons (RCVS), as ranked by the 2014 Research Assessment Exercise. Veterinary Medicine is taught at the newly developed Easter Bush campus, home to a £42 million, purpose-built, teaching facility which opened in 2011.

Veterinary Medicine at Edinburgh mixes the best of tradition with award-winning, progressive teaching. The School's outstanding hospital and teaching facilities provide an excellent environment for developing practical and clinical skills. We offer many opportunities to get involved in biological research as part of our vibrant research community. You will also learn valuable communication, team-building and business management skills and keep a personal and professional development portfolio throughout the BVM&S programme to record elements of study in the professional and clinical skills course.

The School is accredited by both the Royal College of Veterinary Surgeons (RCVS) and the American Veterinary Medical Association (AVMA) allowing our graduates to practise veterinary medicine throughout the UK, Europe, North America and Australasia.

### **Our mission**

is to benefit society and the environment by educating veterinary surgeons to become members of world-wide public and professional health care teams; and to advance veterinary and comparative medicine through research into disease and disease processes with the goal of improving the health and welfare of both animals and human beings: the One Health vision.

Using outstanding clinical facilities, we:

- provide a veterinary service of the highest quality to our clients;
- ensure a stimulating educational environment to equip our students for the profession;
- protect society through safe food production and control of emerging and zoonotic diseases

Through our activities, we will support the aims of the University of Edinburgh in its fundamental mission to advance and disseminate knowledge and understanding.

## **Career Opportunitites**

Our veterinary degree will prepare you for general veterinary practice or to enter further specialist training to work with small, equine, farm, exotic or laboratory animals.

Outside veterinary practice, there are many other exciting career opportunities for our graduates. Our alumni go on to be involved in wildlife disease prevention, endangered species conservation, or livestock husbandry education in the developing world.

You can also pursue a career in research. The School incorporates the Roslin Institute and the University of Edinburgh, which, along with the Moredun Research Institute and Scotland's Rural College, are members of the Easter Bush Research Consortium (EBRC) – representing one of the highest concentrations of animal scientists in the world.

For more information about The Royal (Dick) School of Veterinary Studies please visit:  
[www.ed.ac.uk/vet](http://www.ed.ac.uk/vet)



# Programme Overview

5-year BVM&S (UCAS Code: D100): September start

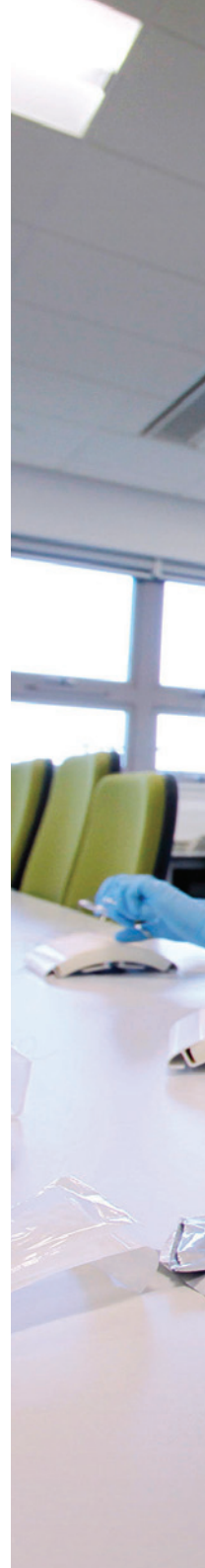
4-year BVM&S Graduate Entry Programme (UCAS Code: D102): August start

The BVM&S (Bachelor of Veterinary Medicine & Surgery) degree is a five year programme (D100) but we also offer a four year dedicated Graduate Entry Programme (D102) to those with an appropriate Biological or Animal Science degree.

Every year the amount of factual information to be learned is substantial, and the pressure on the veterinary students is intense. It is vital, therefore, that applicants are sure of their motivation and their commitment to a very demanding curriculum, and are fully aware that they will be working and training with a cohort of students of equally high academic ability to themselves.

Students work closely together throughout the programme, often in small groups, and the School forms a closely knit community.

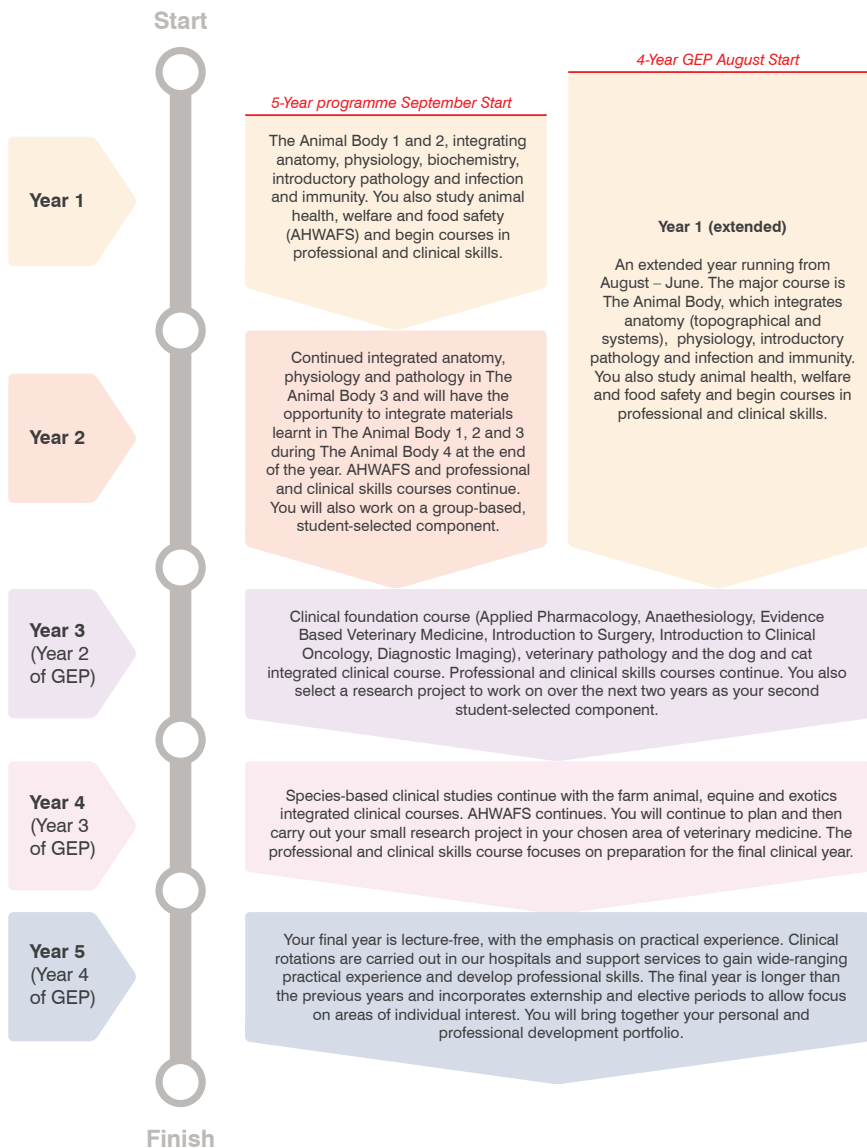
You will also start clinical training with the clinical examination of normal animals in your first few weeks at Edinburgh Veterinary School. Professionalism and communication skills training also begin early in the programme and continue across all years.







# Programme Structure and Curriculum



# Academic Requirements - The 5-year BVM&S D100 programme for Funded Candidates



Candidates applying as a school leaver from Scotland, England, Wales, Northern Ireland and the European Union

In order to be considered for a place, you firstly need to check to see whether you meet our minimum academic requirements. We are generally looking at academic rather than vocational qualifications as our programme is academically demanding. We need to make sure that you will be able to cope with the levels of study required on the programme.

All applicants must also meet our general university entry requirements - including SQA, GCSE, or equivalent English language requirements.

[www.ed.ac.uk/studying/undergraduate/entry-requirements/english](http://www.ed.ac.uk/studying/undergraduate/entry-requirements/english)

## **Relevant to all candidates**

- All candidates must have studied Physics to a minimum level equivalent to SQA Standard Grade 2 or GCSE Grade B.
- Only the first attempt at examinations is normally considered.
- An academic reference must be provided as part of the UCAS application which includes predicted grades/percentages if qualifications are still to be achieved
- All candidates must complete a Work Experience Summary form (WES) by **1 November**.
- Applications without an academic reference or WES form will be considered **incomplete**.

## **SQA Highers**

AAAAB in Five Highers including Chemistry (A), Biology (A) and either Mathematics or Physics to be achieved by the end of S5. If Biology has not been studied in S5, it should be taken in S6 to Higher Level.

## **SQA Advanced Highers**

BB in Advanced Higher Chemistry and one other Advanced Higher science.

If possible Advanced Higher Biology, as this will be beneficial for the first year of the

course. If Physics has not previously been studied to Standard Grade or Higher level, it should be studied in S6 to either Standard Grade, Intermediate 2 or Higher level.

### **GCE A levels**

AAA to include Chemistry, Biology and one other subject approved for entry. If Physics has not been studied to A level, a good pass at GCSE is required.

Candidates must be predicted to gain our minimum entry requirements in A2 subjects in one sitting. Only those who gain, or are predicted to gain, our minimum entry requirements within the normal 2 year period for A level examinations will be considered. Full details of the University approved subjects for entry to the BVM&S are available here: [www.ed.ac.uk/studying/undergraduate/entry-requirements/academic/subjects](http://www.ed.ac.uk/studying/undergraduate/entry-requirements/academic/subjects)

*Additional important information:*

GCE A levels in General Studies and Critical Thinking are not considered. Resitting AS modules is acceptable.

### **International Baccalaureate**

International Baccalaureate candidates must have gained, or be predicted to gain, a total performance of 38 points minimum, to include grades 766 in each of Chemistry (7), Biology and Maths or Physics at Higher level. Where Higher level Maths or Physics is not possible another subject at Higher level maybe be accepted at 6, plus 6 at Standard Level Maths or Physics, subject to approval.

### **Cambridge Pre-U**

D3, D3, D3 (or a combination of D3 and A level grade A). Subject requirements are the same as GCE A levels (see above).

### **Irish Leaving Certificate**

Your application will be considered if you have passed or are predicted to pass the Irish Leaving Certificate with five HL subjects including Chemistry, Biology and either Mathematics or Physics at A and two further subjects at B.

For further information about various UK qualifications, please consult the information here: [www.ed.ac.uk/studying/undergraduate/entry-requirements/academic/academic](http://www.ed.ac.uk/studying/undergraduate/entry-requirements/academic/academic)

### **Mature Students**

We welcome applications from Mature Students although it is worth noting, there is no relaxation of programme entry requirements. In order to be considered you would, therefore, have to achieve the normal minimum entry requirements.

Ordinarily candidates must attain these grades in the one sitting and at the first attempt. However, if you are not able to study full time (if, for example, you are continuing to

work) you would not necessarily be expected to gain the grades at the one sitting but you would certainly have to attain them at the first attempt.

Mature students are encouraged to contact the Admissions Office providing further information on both school and further education examination results to discuss their qualifications on an individual basis prior to making a formal application.

### Non-UK Candidates

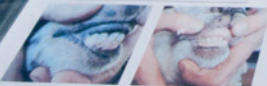
For countries outside the UK that we commonly accept applications from please check the University's website for the most up to date information on entry requirements.

Make sure you read what is relevant to Veterinary Medicine, as the University generally accepts some qualifications that Veterinary Medicine does not. However, please check with the Admissions Office if you are unsure:

[www.ed.ac.uk/studying/international/country](http://www.ed.ac.uk/studying/international/country)



#### Sheep incisors



##### Adult incisors

The crown of an adult incisor is more 'irregular' in shape, and is approximately the same width from the gum margin to the apex as

##### Temporary incisors

The crown of a temporary incisor is more 'irregular' in shape, and is narrower at the gum margin than at the apex.

# Academic Requirements - The 5-year BVM&S D100 programme for Graduate and International applicants



International candidates and candidates who are applying to studying veterinary medicine as a second degree regardless of where domiciled.

**\*\* for North American candidates applying via VMCAS please see page 23.**

## **BVM&S 5-year UCAS Code D100**

### **GCE A levels**

See page 8.

### **International Baccalaureate**

See page 8.

### **US Advanced Placements**

AP candidates should gain, or be predicted to gain, grade 4 or better in each of Chemistry, Biology and Physics or Calculus. SATs are not considered.

### **Canadian High School Diploma**

Secondary School Graduation Diploma with minimum of 85% in Year 12 Chemistry and Biology and 80% in Year 12 Maths/Physics and remaining Grade 12 subjects.

### **Singaporean Integrated Programme**

The Singapore Integrated Programme is accepted alone when undertaking A Levels or the International Baccalaureate within the programme.

### **Graduate Applicants**

An Upper Second Class Honours degree (or equivalent), in an appropriate science subject. Candidates with a non-science degree will be considered for 1st year entry to the 5-year BVM&S programme provided they have gained high grades in the science A levels (or equivalent) in Chemistry and Biology.

The Admissions Committee regrets that it cannot consider ONC, HNC, HND or part-degree qualifications as equivalent to an Upper Second Class Honours degree for entry requirement purposes.

**Additional important information:**

- Please note that all graduate applicants, regardless of fees status, are considered on a full fees basis.
- All candidates must have studied Physics to a minimum level equivalent to SQA Standard Grade 2 or GCSE Grade B.
- Transcripts for qualifications other than A level and the IB should be sent directly to the Admissions Office no later than 15 October. The transcript should detail all courses/subjects studied to date with grades.
- Only the first attempt at examinations is normally considered.
- An academic reference must be provided as part of the UCAS application which includes predicted grades/percentages if qualifications still to be achieved
- All candidates must complete a Work Experience Summary form (WES) by **1 November**.
- Applications without a transcript, and academic reference or WES form will be considered **incomplete**.

If you do not see your country listed in this booklet, please check the following web page to obtain further information: [www.ed.ac.uk/studying/international/country/introduction](http://www.ed.ac.uk/studying/international/country/introduction)

**Non-English Speaking Countries**

We have English Language requirements. These are important both for entry to the University and for meeting the requirements to obtain a visa to study in the UK. You can read more about our requirements here:

[www.ed.ac.uk/studying/international/english/ug-english](http://www.ed.ac.uk/studying/international/english/ug-english)



# Academic Requirements - The 4-year BVM&S D102 programme for Graduate applicants



For international and home graduate candidates applying with an appropriate Biological or Animal Science degree subject

**\*\* for North American candidates applying via VMCAS please see page 23.**

## **BSc (Hons) degree**

An Upper Second Class Honours degree (or equivalent), in an appropriate **Biological or Animal Science** subject, is the minimum requirement for consideration for the Graduate Entry Programme (D102). This enables entry into the 1st year of the 4 year programme.

The Admissions Committee regrets that it cannot consider ONC, HNC, HND or part-degree qualifications as equivalent to an Upper Second Class Honours degree for entry requirement purposes.

## **What should my first degree include?**

Candidates who want to be considered for the GEP must achieve high grades in the following subjects:

- Biology/Zoology
- Physics
- Biochemistry
- Organic and Inorganic Chemistry
- Mathematics/Statistics

In addition, gaining high grades in the following subjects would strengthen an application for the GEP:

- Genetics
- Microbiology
- Cellular Biology

*Additional important information:*

- Apply for one programme only – you will be considered for both D100 and D102.
- All graduate applicants who wish to be considered for either the D100 or D102 programme **MUST** send their degree transcripts directly to the Admissions Office no



later than 1 November. The transcript should detail all courses/subjects studied to date with grades.

- An academic reference must be provided as part of the UCAS application which includes predicted grades/percentages if qualifications still to be achieved.
- Please note that all graduate applicants, regardless of fees status, are considered on a full fees basis.
- Only the first attempt at examinations is normally considered.
- All candidates must complete a Work Experience Summary form (WES) by 1 November.
- Applications without a transcript, an academic reference and WES form will be considered incomplete.

### **Non-English Speaking Countries**

We have English Language requirements. These are important both for entry to the University and for meeting the requirements to obtain a visa to study in the UK. You can read more about our requirements here:

[www.ed.ac.uk/studying/international/english/ug-english](http://www.ed.ac.uk/studying/international/english/ug-english)



## Academic Requirements - Frequently Asked Questions

### **I have missed out on getting the grades required. Can I still apply?**

No, unfortunately not. We receive a great number of applications from those that are able to meet the minimum entry requirements. Your application would not be competitive enough if you didn't meet them.

### **Can an A grade balance out a C grade?**

No. We are looking for you to be able to achieve results consistently.

### **What do you mean by one sitting?**

You need to sit all your exams at the same time and at the first attempt of ever sitting that type of qualification (apart from AS modules).

### **Can I take a subject early?**

There is nothing preventing you from doing this but in order to be considered you will still be required, for example, to take 3 A levels in one sitting and at the first attempt. However, if you are undertaking Curriculum for Excellence, early subjects may be considered (see SQA Highers Academic Requirements).

### **Are there any subjects you do not consider?**

There are some, for example GCE A level General Studies and Critical Thinking. You can find the University's approved list of subjects we do accept here:

[www.ed.ac.uk/studying/undergraduate/entry-requirements/academic/subjects](http://www.ed.ac.uk/studying/undergraduate/entry-requirements/academic/subjects)

### **What if I don't have Physics?**

Applications without any evidence of Physics to at least GCSE or Standard level (or equivalent) will not normally be considered.

### **Do you recognise A\* grades at A level?**

No. A\* grades are treated in the same way as A grades at A level, however the University regularly reviews entry criteria so this may change in the future.

### **Do you accept resits?**

No. Although a couple of module resits at AS level (to be sat prior to completion of A level) is usually acceptable. Please check with the Admissions Office if you are unsure.

### **When will you publish your requirements for Curriculum for Excellence?**

You can access the most up to date information here:

[www.ed.ac.uk/studying/undergraduate/applications-admissions/entry-requirements/cfe](http://www.ed.ac.uk/studying/undergraduate/applications-admissions/entry-requirements/cfe)

**I have been ill or had problems whilst studying, what should I do?**

It is important that your school informs the exam board. The Admissions Committee assumes that any compensation for adverse factors including ill-health and bereavement has already been applied for by the applicant's school and is reflected in exam results.

**I am unsure whether my qualifications meet the criteria, what should I do?**

We receive many applications from around the world so can offer direct guidance on your application. Please contact the BVM&S Admissions Team at [vetug@ed.ac.uk](mailto:vetug@ed.ac.uk) for further advice if you are not studying for any of the qualifications mentioned in this booklet.

**Will I get a place if I meet the entry requirements?**

Not necessarily. Entry to study Veterinary Medicine is extremely competitive so we assess more than academic results. You can read more about the selection process later in this booklet.

**Can I apply part way through my degree?**

We do not consider applicants who are studying at university and not in the final year of their programme. The only exceptions are when our minimum entry requirements at high school level have been achieved and the applicant has made no more than 2 previous applications. Contact the Admissions Team for further information.

**I am a mature applicant. Do you have different entry requirements?**

Please refer to page 8 for further information for mature applicants.

**If I hold a non-science degree what other qualifications do you look for?**

If you hold a 2i (or are predicted) or better in a non-science degree, you would also be required to achieve grades of AA in Chemistry and Biology A level. Unfortunately candidates holding (or predicted) a 2ii (or equivalent) will not be considered.

**When assessing graduate applications, does the Admissions Committee refer back at school results?**

If you are studying towards a science subject which covers the areas that the Committee are looking for then no, little emphasis will be placed on your school results. However, if you hold a non-science degree then yes, the Committee will look back at school results.

**Can I access the University's general admissions policies?**

Yes. These can be found online here: [www.ed.ac.uk/schools-departments/student-recruitment/admissions-advice/admissions-policy/overview](http://www.ed.ac.uk/schools-departments/student-recruitment/admissions-advice/admissions-policy/overview)

# Non-Academic Requirements for all UCAS applicants

## **Evidence of career exploration / Work Experience?**

You should gain as much and as varied practical work experience as possible, which could include time spent:

- Seeing veterinary practice - both large and small animal if possible.
- Livestock farms - dairy and lambing are particularly useful.
- Other animal establishments zoos, kennels, catteries, wildlife centres, pig farms, poultry farms and stables.
- A day at an abattoir is recommended but not demanded.
- We encourage experience gained in veterinary or medical laboratories to help appreciate the scientific basis of veterinary medicine.

Please note: the above are suggestions and ideas for work experience only. It is not a checklist and achieving all these placements is not a requirement for entry.

We do not ask for specific types or number of days/weeks for work experience as it depends, to some extent, on the opportunities available to individual candidates. You must however gain both veterinary practice and animal work experience.

The broader the experience, the better but you should not gain experience to the detriment of your academic studies.

Candidates should be aware that the Admissions Committee can only take into account work already undertaken and not work planned. Applicants may receive an offer conditional on gaining further specified work experience.

All UCAS candidates are required to complete and return a Work Experience Summary form (WES) to the Admissions Office prior to the deadline of 1 November. The WES form is available here: [www.ed.ac.uk/schools-departments/vet/studying](http://www.ed.ac.uk/schools-departments/vet/studying)

Please note that applications submitted without a WES will be considered **incomplete**.

## **Non-academic achievements and interests – these should be recorded on you Personal Statement**

- Social involvement
- Organisational abilities
- Cultural, sporting, musical, vocational and voluntary achievements
- School responsibilities
- Interests and hobbies
- Leadership



# Non-Academic Requirements for UCAS Applicants - Frequently Asked Questions

## **Is there a minimum or maximum age limit?**

There are no age restrictions for entry to study Veterinary Medicine at the University of Edinburgh.

## **How much veterinary/animal-related experience do I need?**

We do not specify a required amount of work experience as it depends, to some extent, on the opportunities available to individual candidates. The broader the experience the better, but applicants are reminded that experience should not be gained to the detriment of their academic studies.

Please see our website for further details on work experience:

[www.ed.ac.uk/schools-departments/vet](http://www.ed.ac.uk/schools-departments/vet)

## **What is a Work Experience Summary Form (WES)?**

A Work Experience Summary Form allows you to record your relevant practical experience. All UCAS candidates must submit a Work Experience Summary form (WES) prior to the deadline of **1 November**.

## **Do I need to send references for veterinary/animal work experience gained?**

No. We only require that you complete a WES form prior to the **1 November** deadline – the information you supply on the WES is sufficient.

## **Do you count veterinary/animal work experience planned after the 1 November deadline?**

Unfortunately, we are unable to take account of any work experience “planned”. However, you should still include this information in the comments section of the WES.

## **I will not have any veterinary/animal work experience prior to submitting my application. Will I be eligible?**

You will still be eligible to apply but we look for significant career exploration. We recognise that applicants have different levels of opportunity available to them to gain work experience and this is taken into account but there must be strong evidence that you have researched the career and that you can evidence this. We would not recommend applying if you cannot demonstrate this.

## **How much detail on my veterinary/animal work experience do I need to go into on the personal statement?**

We are looking for brief details on the type of work experience you gained and the length of time on each. This is then supported by your WES form. The WES form is not limited in the number of placements you can include and has a free text section for you to give

detail of your activities on the placement. Please check with other vet schools though as each school has different requirements.

### **What other things do you look for in an application?**

The Admissions Committee look for evidence of career exploration prior to application (through work experience gained) and evidence of non-academic achievements and interests which could involve social involvement, school responsibilities, leadership, cultural, sporting, musical, vocational and voluntary achievements and interests and hobbies.



### **Will I be interviewed?**

After the initial assessment of applications a shortlist of candidates is drawn up who are then called to interview. It is part of the entry requirements onto the course that every successful candidate will have been interviewed. Candidates outwith the UK will be interviewed either in Edinburgh or at an overseas location depending on accessibility.

Further information is available here: [www.ed.ac.uk/schools-departments/vet/studying/bachelor-vet-medicine/edvetinterviews](http://www.ed.ac.uk/schools-departments/vet/studying/bachelor-vet-medicine/edvetinterviews)

### **Do I need to include every non-academic achievement I have gained?**

No. It is a fine balance but you need to select the ones that show high skill, attainment and variety. We are looking for a rounded individual. You might find it helpful to think broadly of different experiences you have, especially those involving work with other people – Veterinary Medicine can be an intensive career choice, so we are looking to see you have ways of winding down and relaxing.

### **Can my referee mention anything towards my non-academic achievement?**

Yes. The reference is used in conjunction with your Personal Statement, so your referee should mention such things if they are in a position to. There is a section of guidelines specifically for referees later in this booklet.

### **Are there specific achievements you are looking for that will give advantage, such as the Gold Duke of Edinburgh award?**

No. We do not have a specific list of achievements we are looking for. You should aim to demonstrate what you have gained from your achievements and your commitment to them.

# How to complete Your UCAS Application

You will already be able to access guidance on how to complete an application through the UCAS website. However, there are certain things we expect on an application, so we thought some guidance may be useful. There is also a section for your referee. We recommend that you show them as it might help them when writing your reference.

Please note that different veterinary schools might require different things. We are only commenting on behalf of the University of Edinburgh's requirements.

**Name** – For those requiring visas only

Please enter your name as it is written on the passport you intend to use when applying for a visa. This is because we will use this when creating the Confirmation of Acceptance of Studies. For further guidance on applying for a visa to study at Edinburgh please visit the International Office website: [www.ed.ac.uk/schools-departments/international-office/immigration](http://www.ed.ac.uk/schools-departments/international-office/immigration)

**Email** – Please use an email address that you check regularly and will have access to over the Summer period. Email is our main way of contacting you and we send out offer packs and joining instructions this way too. You should check your spam folder regularly as occasionally correspondence can end up here.

**Qualifications** – It is important to provide a full set of data when telling us about your qualifications. We want to know both what you have already obtained and also what you are still studying towards. If your qualification has an overall grade and individual subject grades then please make sure both are listed. If you are unsure, have a look at the academic requirements and see what is being asked for. These are likely to be what we need to see. You must not omit any information such as resits.

**Personal Statement** – To fit everything in that we require - and probably your other veterinary school choices too - it is unlikely that your personal statement will be short. UCAS has a limit on how many characters you can use to complete your statement. This means that you will have to be thoughtful how you word your statement and it is worth taking time over the content.

**Reference** – Your reference **must be an academic** one. If you are applying through a school, they will usually add this to your application form at the end and then submit it for you. If you are not applying from a school, then your form will not be fully submitted until a reference is attached (see UCAS for further details). Overleaf is information that can help guide your referee.



## Guidance For Referees

Entry into Veterinary Medicine is very competitive.

Please look at the following tips before providing a reference:

- Please include predicted grades in the predicted grades section of the UCAS form. An application cannot be processed without these.
- We are looking for evidence that the applicant is a well-rounded person as well as being excellent academically.
- What are they like as a person? Do they have integrity? Are they honest and responsible? Do they show empathy?
- How does the applicant get on with peers and teachers? Would they make a good leader? Do they have good interpersonal and organisational skills? Are they able to work as part of a team?
- What activities are they involved in at school – sport, music or other clubs and hobbies. Do they help out with students in other years?
- Confirm what you can of the applicant's personal statement regarding extra-curricular activities.
- Do you think they are suitable by temperament for veterinary medicine?
- Through research and career exploration the applicant should discover early on that veterinary medicine is about communicating with people. It is vital that the applicant understands this and this is why we attach so much importance to this activity.
- Don't repeat how well an applicant has done by giving a summary of exam results.
- Please give clear confirmation of any circumstances which might have led to a poorer result than expected in the exams.
- Please tell us if the applicant has overcome educational or social disadvantage.
- We will not consider an amended reference after the deadline unless specifically requested by us, so you need to make sure it is accurate on submission.

## **How to complete your UCAS Application – Frequently Asked Questions**

### **Should I send in references for my work experience?**

No. We no longer request references. All UCAS applicants should complete and submit a Work Experience Summary (WES) work experience summary form prior to **1 November**.

### **Can I amend my application after the deadline?**

Not usually. Even if it is exams results, we have to judge the application as it is on 15 October. Not all applicants will be in a position to get new predicted or achieved grades, so this would be unfair. We do not accept amended personal statements and expect your reference to be correct at the time of submission. However, should there be a factual error in personal details we can amend this. If you are unsure, please contact the Admissions Office to obtain clarification.

### **How many schools can I apply to?**

You can choose up to four Veterinary Medicine schools. You have a fifth choice which may be used for an alternative programme without prejudice to demonstrating your commitment to veterinary medicine.

### **Do you recommend using your fifth choice?**

Yes. It's a good safety net. Entry to veterinary medicine is very competitive and gives you a fall-back if you happen to be unsuccessful.

### **I am applying as a graduate candidate, should I apply for both the D100 and D102 courses?**

No apply to just one programme as the Admissions Committee will consider you for both programmes and it saves you having to use two UCAS choices for Edinburgh.

### **Do other Universities see where else I have applied for Veterinary medicine?**

No. UCAS provide invisibility of any other University choices until you have received all your decisions and decided which offers, if any you accept.

# Veterinary Medical College Application Service (VMCAS)



For US and Canadian graduates applying through VMCAS

**Graduate Entry Candidates** with a degree (or in their senior year) in an appropriate Biological or Animal Science subject may be considered for the 4-year BVM&S Graduate Entry Programme. All applicants are required to have completed the required prerequisite courses for the programme. US applicants should have an overall minimum grade point average of 3.4 (4 point scale), with greater than 3.0 in science courses. We also welcome applications from candidates with an alternative degree who have also completed the required prerequisites. Candidates with a non-science degree would normally be considered for the 5-year BVM&S programme. However, if candidates have the specified prerequisites, they may be considered for the 4 year programme.

## **Pre-Vet**

Candidates with two years of a pre-vet will be considered for the 5-year BVM&S programme. An overall GPA of 3.4 (4 point scale) is expected. All applicants are required to have completed the required prerequisite courses for the programme

We must stress that these are minimum academic requirements and there is stiff competition for places to study Veterinary Medicine at the University of Edinburgh. The attainment of minimum academic requirements does not, therefore, necessarily guarantee a place.

## **Prerequisites for the BVM&S at Edinburgh**

Full details of Edinburgh's prerequisites are available on the VMCAS website: [www.aavmc.org/Students-Applicants-and-Advisors/Veterinary-Medical-College-Application-Service.aspx](http://www.aavmc.org/Students-Applicants-and-Advisors/Veterinary-Medical-College-Application-Service.aspx)

## **Additional Tests**

Scores from the Graduate Record Examination (GRE) General Test are required (use 0917 (institution code) and 0617 (department code)). GRE scores should be submitted directly to the School of Veterinary Medicine at the address listed at the back of this booklet before the deadline of **1 October**.

## Work Experience for VMCAS applicants

Applicants will be expected to have taken every opportunity to gain as much relevant practical experience of handling animals as possible. Work experience on a farm dealing with a variety of species is considered to be as important as spending some time seeing veterinary practice. The amount of experience cannot be quantified in terms of days or weeks as it depends, to some extent, on the opportunities available to individual candidates.

The Admissions Committee will be looking for a broad range of relevant practical experiences (both paid and/or unpaid). However, applicants are reminded that experience should not be gained to the detriment of their academic studies. Candidates should describe their practical experience in the appropriate section of their VMCAS form. Candidates should be aware that the selectors can only take into account work already undertaken and not work planned.



# How to complete Your VMCAS Application (US and Canadian Graduates only)

Applications from US and Canadian graduates should be made through the Veterinary Medical College Application Service (VMCAS) from whom information and application forms are available.

[www.aavmc.org/Students-Applicants-and-Advisors.aspx](http://www.aavmc.org/Students-Applicants-and-Advisors.aspx)

You must have the following to complete your VMCAS application:

- A submitted VMCAS Web application by 15 September at 12 midnight Eastern Time.
- Fee Payment. Your fee amount will correspond to the number of schools you have selected. VMCAS requires a credit card payment.
- A minimum of three completed electronic VMCAS evaluations are also due by the deadline. You can submit a maximum of six electronic evaluations.
- Official transcripts from all U.S. and English-speaking Canadian postsecondary institutions attended to be sent directly to VMCAS;
- Standardized tests scores must be delivered to the Universities before their deadline. You don't send test scores to VMCAS.
- Scores from the Graduate Record Examination (GRE) General Test are required (use 0917 (institution code) and 0617 (department code). GRE scores should be submitted directly to the School of Veterinary Medicine before the deadline of 1 October.

You will find contact details for Veterinary Medical College Application Service (VMCAS) in the back of this document in the useful contacts section. Additionally, for further information about the VMCAS process including FAQs, please visit the VMCAS webpages: [www.aavmc.org/Students-Applicants-and-Advisors/Veterinary-Medical-College-Application-Service.aspx](http://www.aavmc.org/Students-Applicants-and-Advisors/Veterinary-Medical-College-Application-Service.aspx)

Applications are considered from October to January. We normally attempt to inform the majority of candidates within 3 months of receipt of a completed application.

US and Canadian graduates can also apply through the UK's UCAS admissions route. Further information is available here [www.ucas.com](http://www.ucas.com). Late application are considered via UCAS through to late December

## **VMCAS - Frequently Asked Questions**

### **Is the BVM&S equivalent to a DVM?**

Yes. The Bachelor of Veterinary Medicine and Surgery is equivalent to a Doctor of Veterinary Medicine.

### **What are the prerequisites for both the 4-year and 5-year programs?**

Full details of Edinburgh's prerequisites are available on the VMCAS website: [www.aavmc.org/Students-Applicants-and-Advisors/Veterinary-Medical-College-Application-Service.aspx](http://www.aavmc.org/Students-Applicants-and-Advisors/Veterinary-Medical-College-Application-Service.aspx)

### **How much work experience do I need?**

We do not specify a required amount of work experience as it depends, to some extent, on the opportunities available to individual candidates. The broader the experience the better, but applicants are reminded that experience should not be gained to the detriment of their academic studies. Please see our website for further details on work experience: [www.ed.ac.uk/schools-departments/vet/studying/american-graduates/work-experience](http://www.ed.ac.uk/schools-departments/vet/studying/american-graduates/work-experience)

### **Can I include unpaid work experience?**

Yes. You should include both paid , unpaid and any voluntary practical work experience. It all counts.

### **I'm applying via VMCAS, where should I send my transcripts and GRE scores?**

Official Transcripts should be sent directly to VMCAS. After the point of application, official transcripts can be sent directly to us here in Edinburgh, please see the School's contact address at the back of this booklet.

### **Do I need to submit a Graduate Record Examination (GRE)?**

Yes. GRE scores should be submitted directly to the School of Veterinary Medicine before the deadline of **1 October**.

### **What codes should I use for the GRE scores for Edinburgh**

The Institution code is 0917, department code is 0617.

### **When will I hear the outcome of my application?**

The Admissions Committee consider VMCAS applications from the mid September onwards. We aim to get a decision out to candidates within 3 months.

### **Will I be interviewed?**

After the initial assessment of applications a shortlist of candidates is drawn up who are then called to interview. It is part of the entry requirements onto the course that every successful candidate will have been interviewed.

The School will be holding interview sessions in the US throughout February and candidates will be able to choose a location most accessible for them.

### **I have missed the deadline, can I still apply?**

Yes. We normally consider late applications from international and graduate candidates. Please contact the BVM&S Admissions Team directly for further information on how to apply.

### **Are there Scholarships available for North American Students?**

Yes. The University of Edinburgh normal offers 5 scholarships for undergraduate study in any subject each year. The scholarships are worth £5,000 per year and are tenable for the duration of the programme of study, subject to satisfactory progress.

For more details, visit: [www.ed.ac.uk/schools-departments/student-funding/undergraduate/international/north-america-ug-scholarship](http://www.ed.ac.uk/schools-departments/student-funding/undergraduate/international/north-america-ug-scholarship)

### **Can I contact a current on course student?**

All candidates who are made an offer will be paired with a student mentor in February/ March. They are a current student who will be able to offer you invaluable advice and support. We try to match you up with students from a similar area of the US/Canada where possible.

### **Can I defer entry?**

The Admissions Committee do not normally offer deferred places. Candidates should apply through VMCAS again prior to the year in which they wish to gain entry.

### **Can I do paid work once on course?**

As a non-resident you are allowed to have paid employment for up to 20 hours per week during term time. During the vacation you are allowed to work full-time. However, due to the nature of the programme and the requirements to do Extra Mural Studies (vacation externship), we do not recommend working whilst studying.

### **I am an international student, can I do some of my EMS back home?**

Yes. Currently only 2 weeks each for both the Animal Husbandry (1 week dairy, 1 week lambing) and Clinical EMS requirements (4 weeks in total) must be completed in the UK.

### **Can I visit the University?**

Our Undergraduate Open Days are a great opportunity to come and see the University for yourself. For further information on Open days and when they are held visit: [www.ed.ac.uk/studying/undergraduate/visiting/open-days](http://www.ed.ac.uk/studying/undergraduate/visiting/open-days) If you cannot attend any of the University Open Days please contact the Admissions Team to arrange an alternative visit.

# Other things to consider

## English Language Requirements

If your first language is not English, you are required to satisfy us of your competence in both written and spoken English, if given an offer of admission. Full details of English language requirements is available here: [www.ed.ac.uk/studying/international/english/ug-english](http://www.ed.ac.uk/studying/international/english/ug-english)

## International Applicants

A Tier 4 Student Visa is required to enter the UK to study at the University of Edinburgh. Those who become “UF” Unconditional Firm (accepted Edinburgh’s offer and met all the conditions of your offer) will be provided with a Confirmation of Acceptance of Studies (CAS) number, which will enable you to apply for a visa.

Please check the International office website for support with visa applications.  
[www.ed.ac.uk/schools-departments/international-office](http://www.ed.ac.uk/schools-departments/international-office)

There are also immigration advisors dedicated to answering your questions:  
[Immigration@ed.ac.uk](mailto:Immigration@ed.ac.uk)  
[www.ed.ac.uk/schools-departments/international-office/immigration/home](http://www.ed.ac.uk/schools-departments/international-office/immigration/home)

## Accommodation

Adjusting to life in a new city, country or culture can be a challenging experience. Finding the right accommodation is one of the most important practical considerations.

The University has a wide range of quality accommodation available, located in Central Edinburgh.

Please note that there is no University accommodation based at the Easter Bush Veterinary Campus. Our students generally live in Edinburgh city centre at the heart of the student community, giving easy access to the University’s social activities and sports facilities, as well as the attractions and diversity of the city itself.

More information regarding Undergraduate Accommodation services is available here:  
[www.accom.ed.ac.uk](http://www.accom.ed.ac.uk)

## Fees and Finance

Whether you are a student from Scotland, Rest of the UK or from within the EU, you will find out more information on tuition fees, bursaries and living costs relevant to you here:  
[www.ed.ac.uk/studying/undergraduate/fees-finance](http://www.ed.ac.uk/studying/undergraduate/fees-finance)



## Living Expenses

Candidates should take into account the cost of living in Edinburgh. We have estimated that students need approximately £200 per week for living costs, including room and board. In addition to these expenses, you will also need to consider initial, annual and miscellaneous costs which might include deposits, bedding, textbooks, insurance, travel. The most up-to-date information on estimated living costs is available here: [www.ed.ac.uk/schools-departments/student-funding/undergraduate/cost-of-living](http://www.ed.ac.uk/schools-departments/student-funding/undergraduate/cost-of-living)

## Additional Costs for Veterinary medicine

In addition to any tuition fees charged, approximate costs are as follows: specialised equipment and lab coats estimated at £150, printed lecture and practical material: £35 and locker deposits £10. In addition, there will be transportation costs to Easter Bush Veterinary Campus from your place of residence. Please be aware that additional costs per year are subject to review.

Applicants should also note that there is an Extra Mural Study (EMS) requirement of 38 weeks to be undertaken during both the four and five-year programmes. The types of placement are varied and some may require students to incur additional costs of travel and accommodation. Limited grant funding may be available from the University, but this is unlikely to cover the full cost.



# Widening Participation

The College of Medicine and Veterinary Medicine fully supports the University of Edinburgh's initiative to widen participation and thereby create a more diverse student population.

The central principles in selection remain that:

- selection decisions will continue to be based on the assessment of academic potential and aptitude for the respective professions.
- by the declaration of transparent criteria, both academic and non-academic, false hope will not be offered to those considering application.

Medicine and Veterinary Medicine at Edinburgh are privileged in the number and quality of applicants. Analysis has suggested that due to the level of competition for places, the College can most effectively contribute to widening access by the creation of special opportunities and specific pathways.

Therefore, we support LEAPS, REACH and the 'Pathways to the Professions' Initiatives, which seek to encourage and support applications from those from educational and social disadvantage. More information about eligibility can be obtained from the Widening Participation team.

Care Leavers In Higher Education Prospective students who identify themselves as having been in care in their UCAS application are contacted to provide them with information about the support systems available to them at the University.

With permission, contact is maintained throughout their university career to ensure appropriate support levels are being maintained.

More information about the University of Edinburgh Support for Care Leavers and Looked After Children is available from Student Recruitment and Admissions.

You can find out more about the University's Widening Participation team and the projects and events they are involved with here: [www.ed.ac.uk/schools-departments/student-recruitment/widening-participation](http://www.ed.ac.uk/schools-departments/student-recruitment/widening-participation)

## General - Frequently Asked Questions

### **I am a school leaver from Scotland how much are the fees?**

If you normally live in Scotland you are likely to be liable for the Home - Scotland tuition fee of £1,820 per annum. If you are studying full-time for your first degree, you may be eligible to have your fees paid by the Scottish Government for your full period of study. You should apply to the Student Awards Agency for Scotland (SAAS) who will pay your tuition fees to the University. If you are in any doubt regarding your eligibility for support, please contact SAAS.

### **I am a school leaver from UK (England, Wales and Northern Ireland) what are the fees?**

The £9,000 tuition fee is applicable to the BVM&S 5 year programme. If you are studying full-time for your first degree, you may be eligible to apply for a tuition fee loan to cover your tuition fees in full. Check online to find out how much it will cost you to study at Edinburgh and what financial support and bursaries are available: [www.ed.ac.uk/studying/undergraduate/fees-finance](http://www.ed.ac.uk/studying/undergraduate/fees-finance)

### **I am a graduate applicant with a degree and I live in the UK or EU/EEA what do I pay?**

Graduate candidates, regardless of where domiciled, are considered for admission on a full cost fee basis only. Details of the current fees are available here: [www.ed.ac.uk/schools-departments/student-funding/tuition-fees/undergraduate/tuition-fees](http://www.ed.ac.uk/schools-departments/student-funding/tuition-fees/undergraduate/tuition-fees)

### **I am an overseas applicant (outside the EEA) what do I pay?**

International and graduate applicants, are considered for admission on a full cost fee basis only. Details of the current fees are available here: [www.ed.ac.uk/schools-departments/student-funding/tuition-fees/undergraduate/tuition-fees](http://www.ed.ac.uk/schools-departments/student-funding/tuition-fees/undergraduate/tuition-fees)

### **Are there scholarships available for North American Students?**

There are scholarships available to students from North America accepted for full-time admission to an undergraduate programme. The University of Edinburgh offers 5 scholarships for undergraduate study in any subject. These scholarships are worth £5,000 per year and are tenable for the duration of the programme of study, subject to satisfactory progress. [www.ed.ac.uk/schools-departments/student-funding/undergraduate/international/north-america-ug-scholarship](http://www.ed.ac.uk/schools-departments/student-funding/undergraduate/international/north-america-ug-scholarship)

### **Are there any further scholarships available for international students?**

Further information on funding for international students is available on the Scholarships and Student Funding Website: [www.ed.ac.uk/schools-departments/student-funding/undergraduate/international/global](http://www.ed.ac.uk/schools-departments/student-funding/undergraduate/international/global)

### **I am an international candidate can I do paid work whilst studying?**

As a non-resident you are allowed to have paid employment for up to 20 hours per week during term time. During the vacation you are allowed to work full-time. However, due to the nature of the programme and the requirement to do Extra Mural Studies, we do not recommend working whilst studying.

### **Can I defer entry?**

The Admissions Committee do not normally offer deferred places. Candidates should apply before the deadline prior to the year in which they wish to gain entry.

### **How often may I apply to the Veterinary School as a school leaver?**

Normally we will only accept two applications from any one candidate.

### **When will I hear the outcome of my application?**

The Admissions Committee consider applications from the end of October onwards, with all subsequent short-listed candidates offered an interview. We aim to get a decision out to candidates within 3 months.

### **When are interviews held?**

The interviews are held from December to March. Although the Admissions Committee may advise some candidates of a decision within a month of the application deadline, decisions are processed right up until the end of March so you may not hear one way or the other until early April.

No offer of admission is made without an interview. Further information is available here: [www.ed.ac.uk/schools-departments/vet/studying/uk-eu-school-leavers/how-to-apply/edvetinterviews](http://www.ed.ac.uk/schools-departments/vet/studying/uk-eu-school-leavers/how-to-apply/edvetinterviews)

Candidates outwith the UK will be interviewed either in Edinburgh or at another overseas location depending on accessibility.

### **Can I intercalate during my course?**

If you have special interest in animal disease you can choose to complete a BSc (Hons) Veterinary Science after your second or subsequent years. The programme consists of a year of advanced study in one of the following: biochemistry, neuroscience, microbiology & infectious diseases and zoology. You may, with permission, attend intercalated degree courses at the other UK Veterinary establishments and/or in other parts of the University. For exceptional candidates, there is also the alternative possibility of a one-year MSc by research after the third year, and even the possibility of doing an intercalated three-year PhD. You can also enrol on one of our prestigious taught MSc programmes which include Animal Welfare and Behaviour, Infectious Diseases, Conservation Medicine, Equine Science or One Health.

### **Am I required to sit the BMAT, MCAT or VCAT?**

No. None of our candidates applying through UCAS are required to sit any of the above.

### **I have missed the deadline, can I still apply?**

The School does not consider late applications for any of the funded places. However, international and graduate candidates are requested to contact the BVM&S Admissions Team to seek further information on whether places are available.

### **Is there student accommodation at the Easter Bush Campus?**

No. All student accommodation is based in the central area of Edinburgh.

[www.accom.ed.ac.uk](http://www.accom.ed.ac.uk)

### **What is the average starting salary for a vet?**

Average UK starting salaries are around £29,000 for the whole package. If a house and car are provided as part of the job the amount is lowered accordingly.

### **What sort of jobs do graduates go into?**

Most of our graduates first jobs are in practice, small animal, equine, farm or mixed.

### **What is EMS?**

Extra Mural Studies. You are required to complete two types of EMS during your degree, mainly outwith semester time: Preclinical/Animal Husbandry, which comprises a total of 12 weeks carried out during years 1 and 2 and Clinical EMS which comprises 26 weeks to be carried from year 3 onwards.

Animal Husbandry	12 weeks
Animal husbandry and handling experience on a range of commercially sized animal units	

Clinical	26 weeks
A flexible period which may include experience in clinical practices, research and/or charitable organisations	

### **I am an international student, can I do some of my EMS back home?**

Yes. Currently only 2 weeks each for both the Animal Husbandry (1 week dairy, 1 week lambing) and Clinical EMS Requirements must be completed in the UK.

### **Do you have any guidance for parents?**

Yes. Choosing the right University is an important decision in any student's life and we understand parents want to be involved in their son or daughter making the right choice. Our Parents Guide is available here:

[www.ed.ac.uk/schools-departments/vet/studying/bachelor-vet-medicine](http://www.ed.ac.uk/schools-departments/vet/studying/bachelor-vet-medicine)

# Applicants with Disabilities, Health Problems and Allergies

The University and School are committed to encouraging and supporting suitably qualified disabled applicants. Veterinary Medicine is a practical subject and students must be able to handle and examine all animals safely and humanely, and to ensure the safety of themselves and involved personnel.

Veterinary training is very demanding, emotionally and physically. If you have health problems or a disability, which may have an impact on your ability to cope with the programme, work with animals or carry out any other practical procedures, you should refer to guidance available from the Royal College of Veterinary Surgeons (RVCS) and the School's Guidance for Applicants with a Disability and Health Problems. If you would like to discuss any issues or to seek clarification, please contact the BVM&S Admissions Team.

Further information on our Admissions Policy is available here:

[www.ed.ac.uk/schools-departments/vet/studying/bachelor-vet-medicine/overview](http://www.ed.ac.uk/schools-departments/vet/studying/bachelor-vet-medicine/overview)



# How we select

## **Candidates applying through UCAS**

Each application is assessed by the Admissions Committee. We consider both academic results (achieved or predicted) and non-academic qualities which include relevant practical work experience gained and extra-curricular activities.

Applications are placed in rank order and interview offers are made to those with the highest evaluation. Successful applicants are likely to have scored very highly in both academic and non-academic criteria. Due to intense competition for places, unfortunately many highly qualified students are unsuccessful each year.

The Edinburgh BVM&S interview is a form of multiple mini interview. The interview is a series of seven 10 minute stations with an interviewer at 5 of the 7 stations. Two stations are unstaffed. Candidates called for interview will be invited to Edinburgh or, if international, one of our overseas locations.

As the selection procedure is complex it may be there is a long period between submitting an application and receiving the outcome. We aim to have returned decisions on applications within 3 months of the applications deadline, however in some cases this can take a little longer.

On page 38 you can see how the process flows between an applicant, UCAS/VMCAS and the University.

# What happens after I apply?

Veterinary Medicine is a very competitive area to gain entry into and the number of applications we receive outweighs the number of offers we are able to make. Each application undergoes an initial screening where we check both your tuition fee status and that you have achieved, or are predicted to achieve, the minimum academic requirements.

## **BVM&S Available Places**

Once all applications have gone through the initial screening process, we are then in a position to decide who is eligible to be called for interview. As a result of the changes in student funding arrangements for students from England, Wales and Northern Ireland, there are now two separate allocations of Veterinary Medicine places for students from the UK and EU and who do not already hold a first degree.

These allocations have been determined by the Scottish Funding Council and are based on historic intake patterns. Further information is available here: [www.ed.ac.uk/schools-departments/vet/studying/bachelor-vet-medicine/bvms-places](http://www.ed.ac.uk/schools-departments/vet/studying/bachelor-vet-medicine/bvms-places)

The School has a number of full fee places available each year - for overseas and graduate candidates. The Scottish Funding Council does not fund places on these programmes. The School currently has 170 places available spread across the D102 4-year BVM&S Graduate Entry Programme (GEP) and the D100 5-year BVM&S programme.

## **UCAS Applicants – UK and EU School Leavers**

The Admissions Committee consider UCAS applications from the end of October onwards, with all short-listed candidates offered an interview. The interviews are generally held from December through to mid-March each year. Although the Admissions Committee may advise some candidates of a decision within a month of the application deadline, decisions are processed right up until the end of March so you may not hear one way or the other until early April.

No offer of admission is made without an interview. Offer holders receive an electronic offer pack. Once your application is "UF" Unconditional Firm (when you have accepted Edinburgh's offer and met all the conditions of your offer) you will receive an electronic joining pack (from July onwards).

In August, candidates who satisfy the exact conditions of their offer will receive automatic confirmation of this from UCAS and the Admissions Office after publication of the examination results.



### **Prospective Veterinary Student Confidential Health Questionnaire**

All holders of Unconditional Firm offers are required to complete a confidential Health Questionnaire prior to entry to the programme regardless of whether a disability or health condition was declared on application or not, and enrolment is subject to Health Clearance.

Further information is available here: [www.ed.ac.uk/schools-departments/vet/studying/studying/healthquestionnaire](http://www.ed.ac.uk/schools-departments/vet/studying/studying/healthquestionnaire)

### **UCAS Applicants - Graduate and International Candidates**

The selectors consider UCAS applications from the end of October onwards with. Successful short-listed candidates called for interview during late-January/February. Candidates from outwith the UK will be interviewed either in Edinburgh or at another overseas location depending on accessibility. Please be aware that all graduates are considered on a full fees basis only for both the 4-year and 5-year programmes. Please be aware that all graduates are considered on a full fees basis only for both the 4-year and 5-year programmes.

### **VMCAS Candidates – US and Canadian pre-vet applicants**

The deadline for applying is 15 September with additional information being received up until 1 October. We normally attempt to inform the majority of candidates within 3 months of receipt of a completed application.

Successful candidates will be called for interview. The School will be holding interview sessions in various locations in the United States during February and candidates will be able to choose a location depending on accessibility.

### **If your application is unsuccessful**

We are aware that many of our unsuccessful applicants would make successful and effective veterinary surgeons. Sadly, due to the number of places we have, not everyone can obtain an offer. However we do offer the opportunity to obtain feedback. We need to receive the request in writing which can be done via email to [vetug@ed.ac.uk](mailto:vetug@ed.ac.uk)

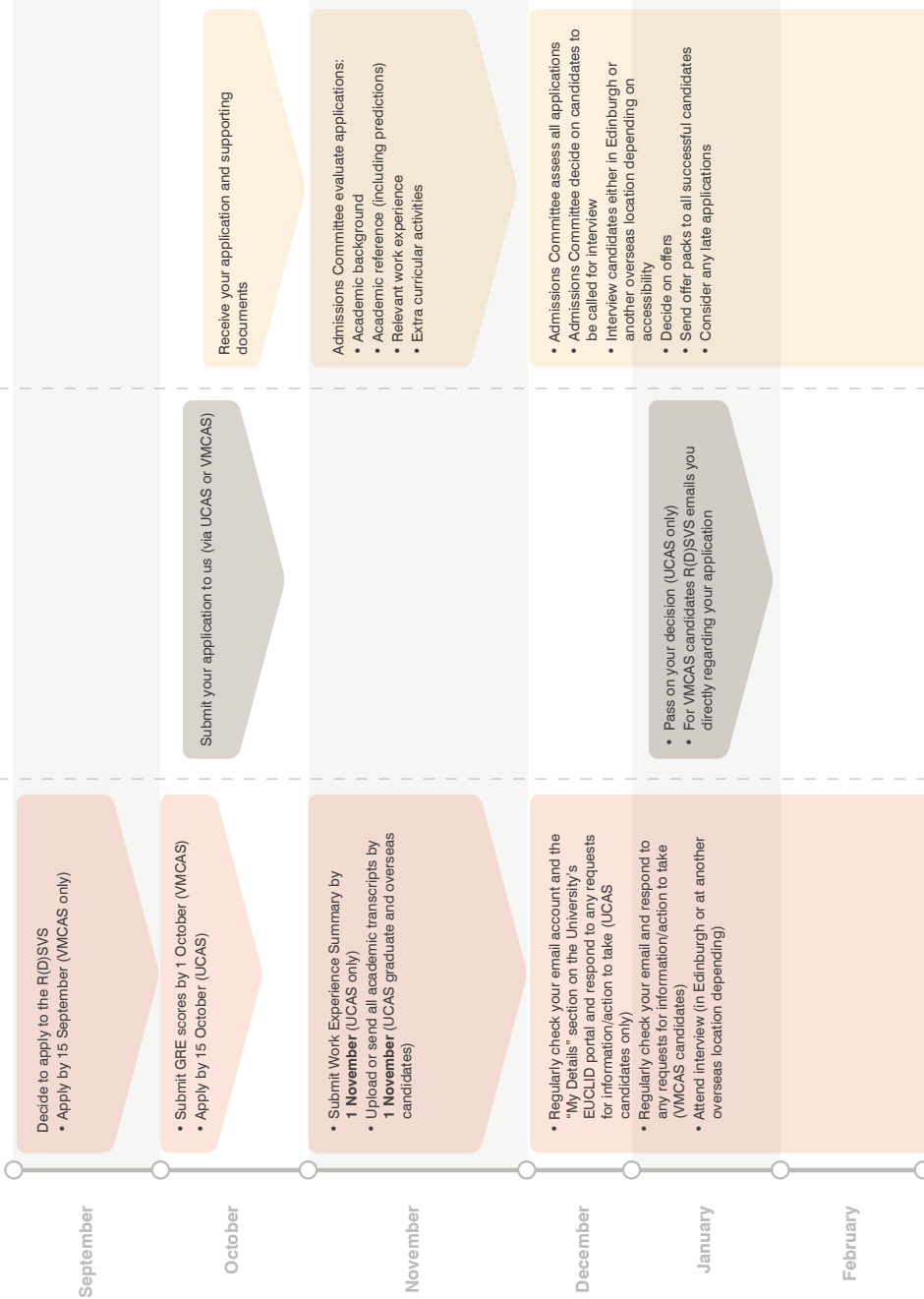
If you are a UCAS applicant you will receive notification of an unsuccessful application through UCAS. If you are a VMCAS applicant you will receive notification of an unsuccessful application via email.

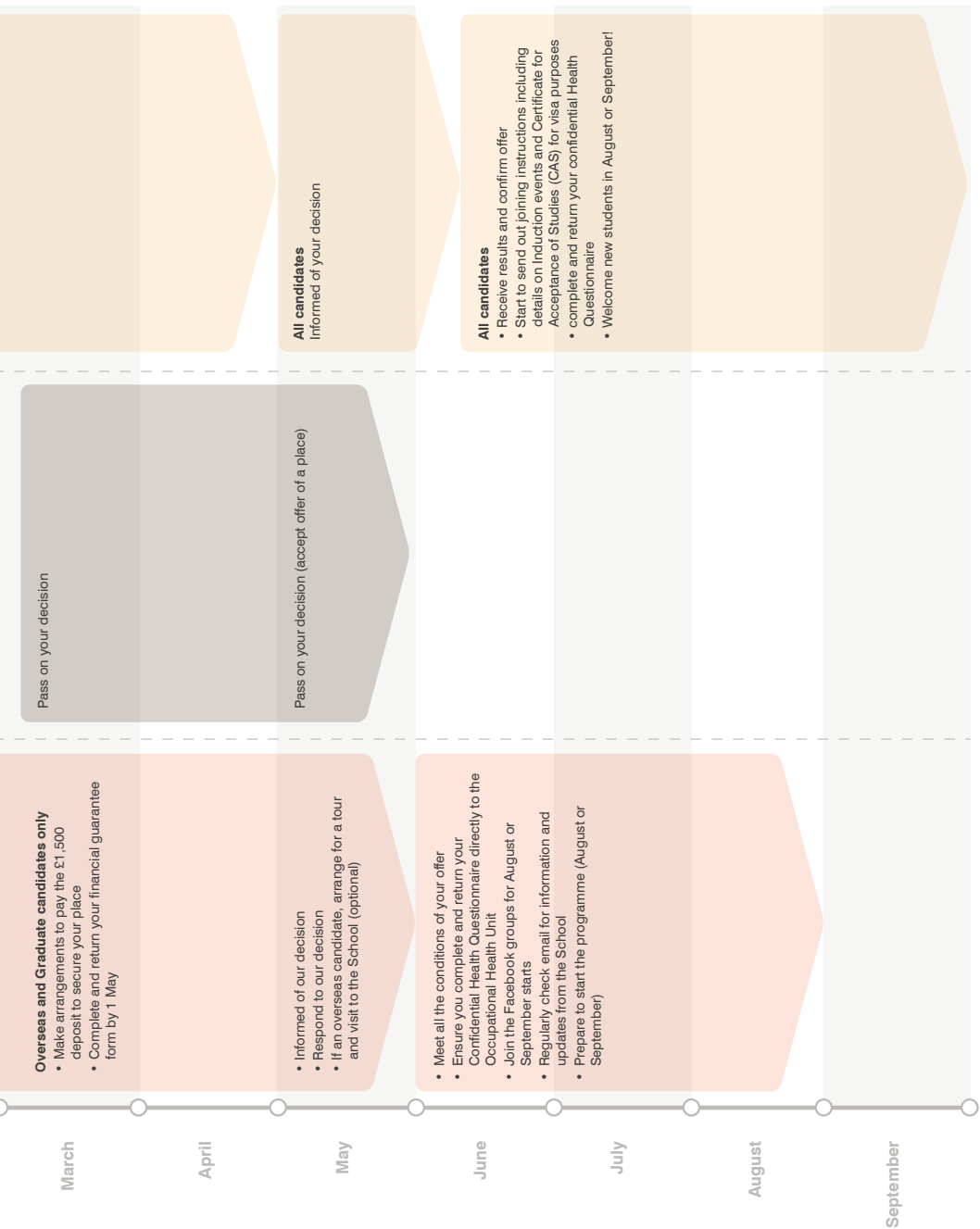
We do not enter into Clearing, Adjustment or Extra so vacancies for our funded places (home UK/EU) will not become available in those ways.

# Admissions Process



## You





March

April

May

June

July

August

September

**Overseas and Graduate candidates only**

- Make arrangements to pay the £1,500 deposit to secure your place
- Complete and return your financial guarantee form by 1 May

- Informed of our decision
- Respond to our decision
- If an overseas candidate, arrange for a tour and visit to the School (optional)

- Meet all the conditions of your offer
- Ensure you complete and return your Confidential Health Questionnaire directly to the Occupational Health Unit
- Join the Facebook groups for August or September starts
- Regularly check email for information and updates from the School
- Prepare to start the programme (August or September)

Pass on your decision

Pass on your decision (accept offer of a place)

**All candidates**  
Informed of your decision

**All candidates**

- Receive results and confirm offer
- Start to send out joining instructions including details on Induction events and Certificate for Acceptance of Studies (CAS) for visa purposes
- Complete and return your confidential Health Questionnaire
- Welcome new students in August or September!

# Visiting the University

We have several Open Days throughout the year. Booking usually opens approximately six weeks prior to the event.

These offer a chance to find out about student life at the University and the opportunity to visit our Easter Bush Campus. There are presentations focused on Veterinary Medicine as well as information stands with admissions, curriculum and clinical skills staff on hand to answer any questions.

Tours of the campus are led by our current students and staff and visit the teaching facilities and small and large animal hospitals which make up our veterinary campus. These are strictly ticketed and must be booked in advance – we recommending doing so early to avoid disappointment.

You can obtain up-to-date information about these days here: [www.ed.ac.uk/studying/undergraduate/visiting/open-days](http://www.ed.ac.uk/studying/undergraduate/visiting/open-days)

## **Additional opportunities to visit the campus**

### **Interviews**

All candidates called for interview for a place to study on the BVM&S degree programme will be offered a tour of the campus on their interview day.

### **Individual visit**

Please contact the Admissions Office regarding availability for individual visits [vetug@ed.ac.uk](mailto:vetug@ed.ac.uk). In addition, general guided and self-guided tours of the university can be arranged through the Student Recruitment and Admissions office: [www.ed.ac.uk/studying/undergraduate/visiting](http://www.ed.ac.uk/studying/undergraduate/visiting)

# Our contact details

## **BVM&S Admissions Team**

Royal (Dick) School of Veterinary Studies  
The University of Edinburgh  
Easter Bush Campus  
Midlothian, EH25 9RG

Telephone: **+44 (0) 131 651 7305**

Fax: **+44 (0) 131 650 6585**

Email: **[vetug@ed.ac.uk](mailto:vetug@ed.ac.uk)**

Web: **[www.ed.ac.uk/vet](http://www.ed.ac.uk/vet)**

## **Follow us**

 [www.facebook.com/DickVetAdmissions](https://www.facebook.com/DickVetAdmissions)

 [www.twitter.com/EdinburghVets](https://www.twitter.com/EdinburghVets)

## **Head of School/Dean**

Professor David Argyle

## **Directors**

### **Veterinary Teaching**

Professor Susan Rhind

### **Veterinary Admissions**

Dr Sally Argyle

### **Student Affairs**

Dr Geoff Pearson

### **Research and Graduate Studies**

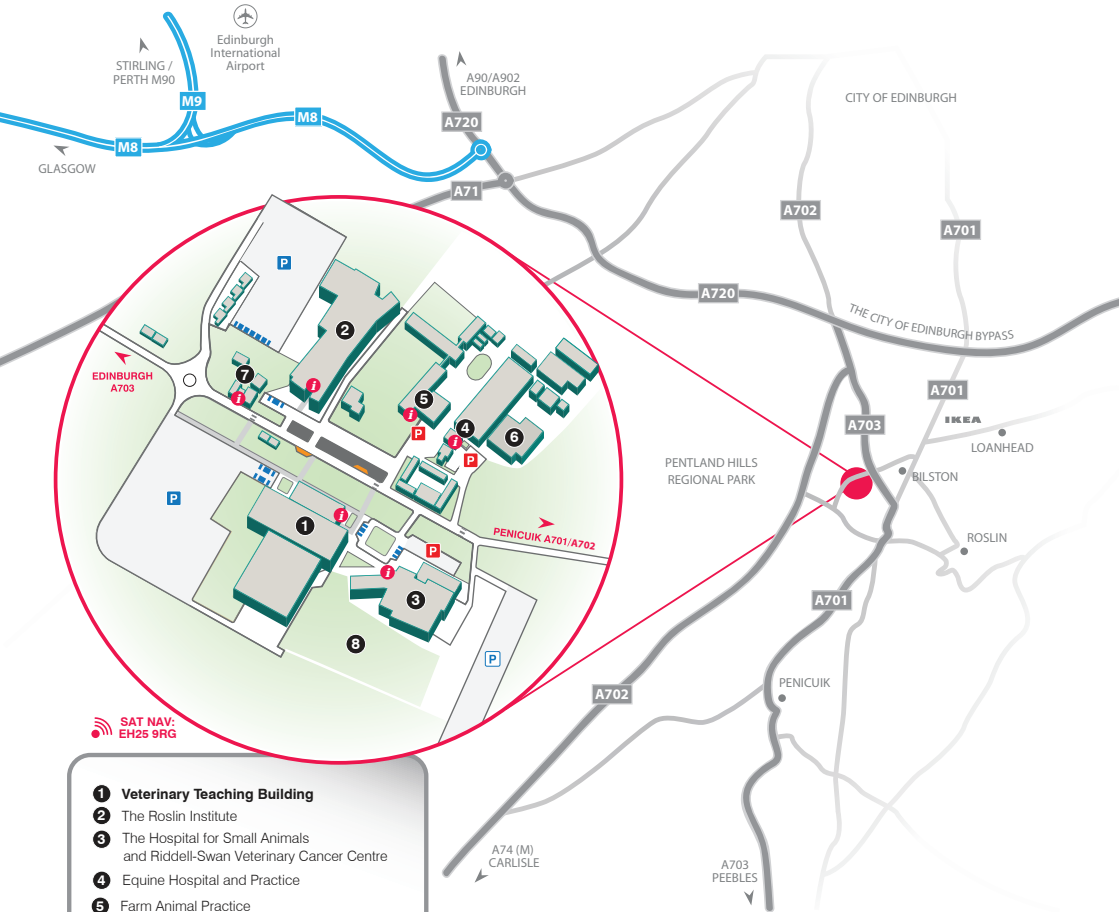
Dr Bernadette Dutia



# How to find us

The Easter Bush campus is located approximately eight miles south of Edinburgh city centre. More information on how to find us:

[www.ed.ac.uk/schools-departments/vet/about/location](http://www.ed.ac.uk/schools-departments/vet/about/location)



SAT NAV:  
EH25 9RG

- 1 Veterinary Teaching Building**
- 2** The Roslin Institute
- 3** The Hospital for Small Animals and Riddell-Swan Veterinary Cancer Centre
- 4** Equine Hospital and Practice
- 5** Farm Animal Practice
- 6** Farm Animal Teaching Hospital
- 7** Campus Service Centre
- 8** Community Garden
- P** Client parking
- P** Parking
- P** Overflow parking
- P** Disabled parking
- f** Main entrance & reception
- Bus stop

The Royal (Dick) School of Veterinary Studies  
 Easter Bush Campus  
 The University of Edinburgh  
 Midlothian  
 EH25 9RG

# Other useful contacts

## **Accommodation Services**

+44 (0)131 651 2042  
accom.allocations@ed.ac.uk  
[www.accom.ed.ac.uk](http://www.accom.ed.ac.uk)

## **Edinburgh University Students' Association (EUSA)**

+44 (0)131 650 2656  
advice@eusa.ed.ac.uk  
[www.eusa.ed.ac.uk](http://www.eusa.ed.ac.uk)  
[www.twitter.com/EUSA](https://www.twitter.com/EUSA)

## **International Office**

+44 (0)131 650 4296  
enquiries.international@ed.ac.uk  
[www.ed.ac.uk/international-office](http://www.ed.ac.uk/international-office)

## **BVM&S Admissions Office**

+44 (0)131 651 7305  
vetug@ed.ac.uk  
[www.ed.ac.uk/schools-departments/medicine-vet-medicine](http://www.ed.ac.uk/schools-departments/medicine-vet-medicine)  
  
[www.twitter.com/EdinburghVets](https://www.twitter.com/EdinburghVets)  
[www.facebook.com/Dickvetadmissions](https://www.facebook.com/Dickvetadmissions)

## **Scholarships and Bursaries – Scholarships and Student Funding Services**

+44 (0)131 651 4070  
scholarships@ed.ac.uk  
[www.ed.ac.uk/student-funding](http://www.ed.ac.uk/student-funding)  
[www.twitter.com/UoEStudentFunds](https://www.twitter.com/UoEStudentFunds)

## **The Students Awards Agency for Scotland (SAAS)**

0845 111 1711  
saas.geu@scoland.gsi.gov.uk  
[www.saas.gov.uk](http://www.saas.gov.uk)

## **Student Disability Service**

+44 (0)131 650 6828  
disability.service@ed.ac.uk  
[www.ed.ac.uk/schools-departments/student-disability-service](http://www.ed.ac.uk/schools-departments/student-disability-service)

## **Student Fees and Funding – Scholarships and Student Funding Services**

+44 (0)131 650 2230  
fees@ed.ac.uk  
[www.ed.ac.uk/student-funding/fees](http://www.ed.ac.uk/student-funding/fees)

## **Student Finance England**

0845 300 5090  
[www.direct.gov.uk/studentfinance](http://www.direct.gov.uk/studentfinance)

## **Student Finance Northern Ireland**

0845 600 0662  
[www.studentfinancenir.co.uk](http://www.studentfinancenir.co.uk)

## **Student Finance Wales**

0845 602 8845  
[www.studentfinancewales.co.uk](http://www.studentfinancewales.co.uk)

## **Student Recruitment and Admissions (SRA)**

+44 (0)131 650 4360  
sra.enquiries@ed.ac.uk  
[www.ed.ac.uk/schools-departments/student-recruitment](http://www.ed.ac.uk/schools-departments/student-recruitment)  
[www.twitter.com/ApplyEdinburgh](https://www.twitter.com/ApplyEdinburgh)

## **UCAS**

+44 (0)871 4680468  
enquiries@ucas.ac.uk  
[www.ucas.com](http://www.ucas.com)  
[www.twitter.com/ucas\\_online](https://www.twitter.com/ucas_online)

## **Widening Participation at Edinburgh**

+44 (0)131 651 1755

sra.enquiries@ed.ac.uk

[www.ed.ac.uk/schools-departments/  
student-recruitment/widening-  
participation](http://www.ed.ac.uk/schools-departments/student-recruitment/widening-participation)

[www.twitter.com/PathwaysEdin](http://www.twitter.com/PathwaysEdin)

## **Veterinary Medical College**

### **Application Service**

1101 Vermont Avenue, NW Suite 301

NW, Level 1C,

Washington, DC 20005-3536

USA

Telephone: 202-682-0750 or

VMCAS student hotline 1-877-862-2740

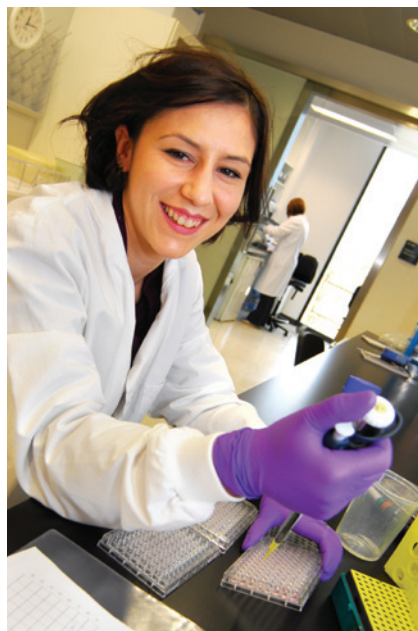
[vmcas@aavmc.org](mailto:vmcas@aavmc.org)

[www.aavmc.org](http://www.aavmc.org)



# Excellence in Veterinary Education







THE UNIVERSITY *of* EDINBURGH  
The Royal (Dick) School  
of Veterinary Studies

---

[www.ed.ac.uk/vet](http://www.ed.ac.uk/vet)

Designed in-house at The Royal (Dick) School of Veterinary Studies, University of Edinburgh.

This booklet is also available online at: [www.ed.ac.uk/schools-departments/vet/studying/bvms-booklet](http://www.ed.ac.uk/schools-departments/vet/studying/bvms-booklet)

It can also be made available in alternative formats on request. All information correct at time of going to print. No part of this publication may be reproduced without written permission of the University.

The University of Edinburgh is a charitable body, registered in Scotland, with registration number SC005336.