

Giving feedback: a student guide

For more information: edin.ac/2hP62mk



When: At course-end

click here:

Course Enhancement Questionnaires (Taught courses only)

- Learn more about Course Enhancement Questionnaires (CEQs), why they matter, how they are administered, and other important issues to [LINK](#)
- About Course Enhancement Questionnaires: [LINK](#)
- Course Enhancement Questionnaires Policy: [LINK](#)



When: Mid-course each semester/year

click here:

Mid-Course Feedback (Taught courses only)

- Mid-course feedback aims to provide students with an opportunity to feed back during each course on what is going well, any issues, and to receive a response to feedback while the course is still running. [LINK](#)

When: Ongoing

click here:

Student Representation System

- What is Student Representation : [LINK](#)
- Who are your Representatives : [LINK](#)

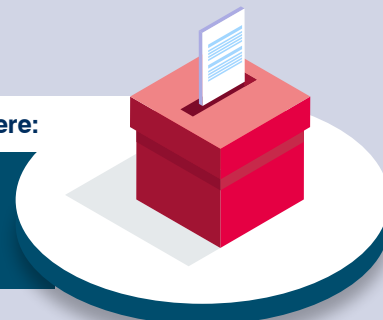


When: Ongoing

click here:

'Have Your Say' Online Suggestions Box

- What is the Have your Say suggestions box: [LINK](#)
- Responses: [LINK](#)



When: Annually/Biennially

click here:

National Surveys

- All the data we gather is used to shape future decisions about the full spectrum of areas that make up the student experience. We analyse the results from the surveys and make recommendations for change based on the findings. Some of the findings may prompt further research so we can gain more of an understanding of how students feel about particular issues. [LINK](#)



When: Minimum six-yearly

click here:

Internal Periodic Review

- What is Internal Periodic Review [LINK](#)
- How to get involved [LINK](#)