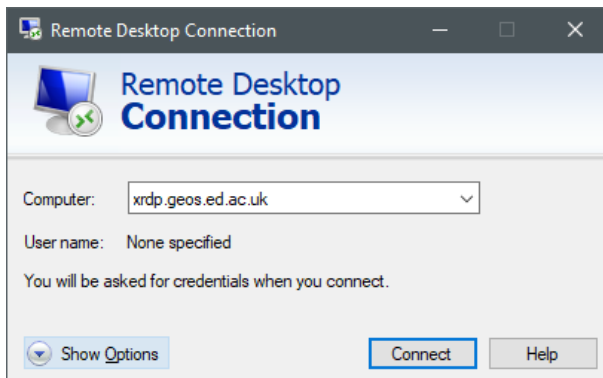


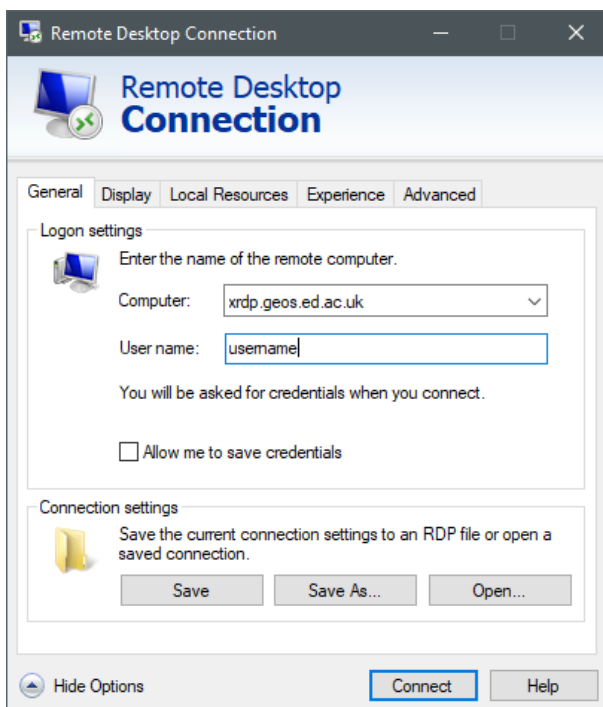


Connecting to XRDP from Windows

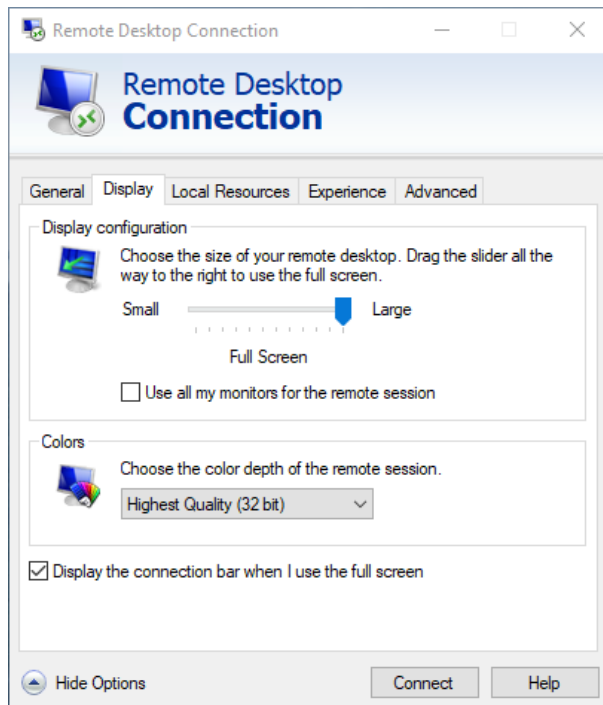
1. Type '**Remote Desktop Connection**' into the Start menu search.
2. Enter the computer address (or name depending on client) as: **xrdp.geos.ed.ac.uk**



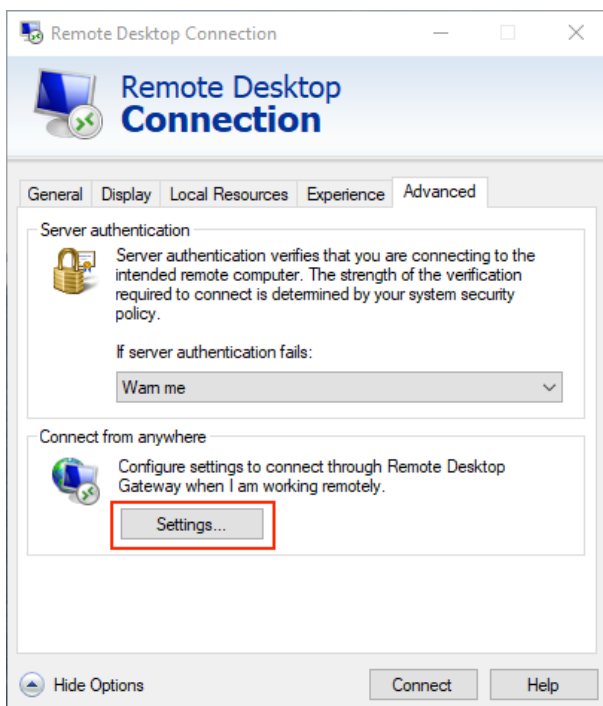
3. Click '**show options**' at the bottom left.
4. Enter your username here (without @ed.ac.uk).



5. Click '**display**' and choose the screen size (full screen or windowed resolution). Click 'use all my monitors' if you have more than one screen and want to use multiple screens for your Linux session.

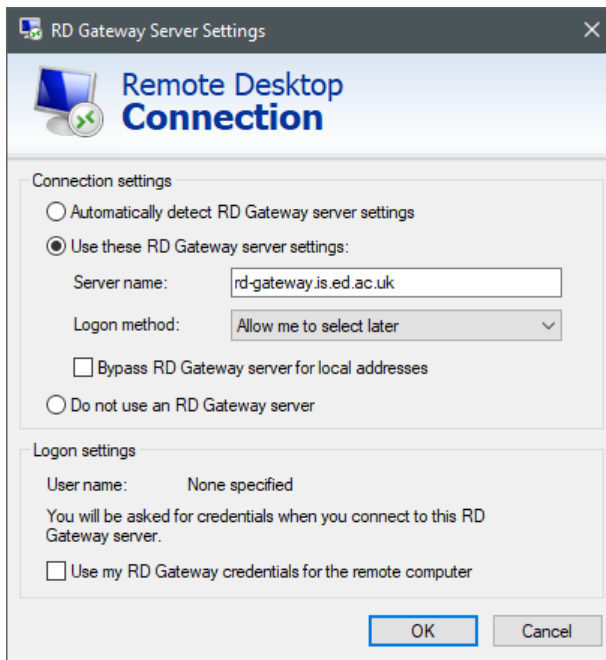


6. Click '**advanced**' and then '**settings**' under 'connect from anywhere':



7. Select 'use these RD Gateway server settings' and enter **rd-gateway.is.ed.ac.uk** as the server name.

Then set 'logon method' to 'allow me to select later' and uncheck 'bypass RD gateway server for local addresses'.

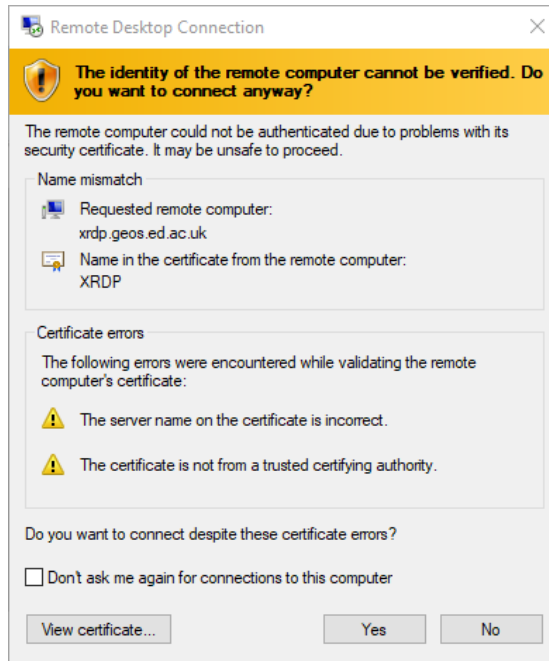


8. Click 'OK' then 'connect'. When prompted for a username and password to connect to the gateway, enter your username in the form **username@ed.ac.uk** along with your EASE password:



Cont...

9. Click **'OK'** and then **'yes'** to the certificate warning.



10. When at the Linux session prompt, enter your username on its own (without @ed.ac.uk) along with your EASE password:

