

# Applying for **Medicine**



THE UNIVERSITY *of* EDINBURGH  
Edinburgh Medical School

# Welcome

Welcome to our booklet specifically designed to give you as much information as possible about the application process for Medicine (MBChB) at the University of Edinburgh. We aim to explain what we are looking for and clarify what can often be a daunting process, so you can make an informed choice as to whether Edinburgh Medical School is the medical school for you.

## *The Admissions Team*



This booklet is also available online at [www.ed.ac.uk/medicine-vet-medicine/undergraduate/medicine/applying/downloadbooklet](http://www.ed.ac.uk/medicine-vet-medicine/undergraduate/medicine/applying/downloadbooklet)

# Contents

Changes to Selection at Edinburgh Medical School	2
Applying for Medicine at the University of Edinburgh	3
Academic Requirements	4
Non-Academic Requirements	12
UKCAT	15
Graduate Applicants	18
International Applicants	20
Disabled Applicants	21
Widening Participation	22
How to Complete Your UCAS Application	23
How We Assess Your Application	26
The Outcome of Your Application	28
Protecting Vulnerable Groups Scheme	30
Other Things to Consider	31
Visiting the University	32
Useful Contacts	33

# Changes to Selection at Edinburgh Medical School

The Medical School reviews the selection procedure on a regular basis. This usually results in minor changes each year. However, there may be changes over the next few years in how we select our medical students, due to numerous changes in curriculum delivery, UKCAT and approaches to selection in general. Whilst we aim to give applicants as much information as far in advance as possible, it may well be that some changes are only advertised shortly before UCAS opens for submission of applications. We therefore recommend coming back to our website and checking for changes just before you apply, particularly if you are not intending to apply for a year or two.

[www.ed.ac.uk/medicine-vet-medicine/undergraduate/medicine/applying](http://www.ed.ac.uk/medicine-vet-medicine/undergraduate/medicine/applying)

## Our 6 year MBChB programme

Edinburgh Medical School's MBChB spans six years, including an academic year of full-time, research-based study in Year 3. Six-year medicine programmes are offered by a number of medical schools in England but to date, Edinburgh is the only Scottish school to do so. You will choose from a wide range of disciplines and topics, including established areas such as neuroscience and new areas such as experimental medicine. Later in the curriculum, you will have opportunities to revisit and extend the research interests developed. On graduation, you will leave with both a research-based BSc (Hons) and an MBChB primary medical qualification. As such, you will have a deep understanding of medical research and evidence-based medicine, which will be useful whatever career path you follow. You will be especially well equipped to pursue an academic career in medicine, where ongoing practical involvement in research, as a physician scientist, is a feature.



# Applying for Medicine at the University of Edinburgh

Applications for Medicine have to be submitted through the Universities and Colleges Admissions Service (UCAS). Applications can be submitted from 1st September to 15th October for the following September's intake (or deferred entry for the year after). We **cannot** consider applications after this deadline.

You need to meet our minimum academic entry requirements and have sat the UKCAT, which we discuss further on in this booklet. We have created a checklist below which may help you check your eligibility and preparation for an application.

- Academic requirements: usually two levels of study (see page 4).
- UKCAT (see page 15).
- Researched medicine as a career, including work experience.
- Researched the curriculum/teaching style of the medical schools you are interested in.
- Researched the Universities and towns/cities of the medical schools you are interested in.
- Made sure you are certain Medicine is the field **you** are interested in.
- Submitted your application to UCAS by 15th October.

# Academic Requirements

In order to be considered for a place, you firstly need to check to see whether you meet our minimum academic requirements. We are usually looking at academic rather than vocational qualifications as our programme is academically demanding. We need to make sure that you will be able to cope with the levels required on the course. Below we will cover our standard entry requirements from the UK along with links to our website for the less common qualifications that we accept from elsewhere in the world. Following that, there are some frequently asked questions in which we aim to clarify meanings and debunk myths.

**All applicants must also meet our general university entry requirements - including SQA, GCSE, or equivalent English language requirements. You cannot apply if you have just started or are midway through a degree in the academic year in which you apply.**

You can find the University's approved subjects listing online here:

**[www.ed.ac.uk/studying/undergraduate/entry-requirements/approved-subjects](http://www.ed.ac.uk/studying/undergraduate/entry-requirements/approved-subjects)**

## SQA Highers:

AAAAB normally by the end of S5 to include Chemistry and two of Biology, Mathematics or Physics. For some applicants this subject combination at S5 Higher is neither possible nor appropriate. Students who meet the grade requirements in S5 but are missing one or more sciences may take the missing subject(s) in S6. Human Biology may replace Biology. National 5s: Grade B (or Intermediate 2 at Grade B or Standard Grade at 2) in Biology, Chemistry, English and Mathematics. SQA Advanced Highers: We encourage the study of at least two subjects at AH level plus a Higher in S6 in order to be competitive. The subjects of greatest relevance to a medical programme are Chemistry and Biology. Not studying these in S6 may impact on how competitive you are.

Conditions will be set for those still undertaking study in S6. The standard offer will be BB at Advanced Higher and a B at Higher. Contextual factors may be taken into account when offers are made.

## GCE A Levels:

A Levels: AAA including Chemistry and one subject from Biology, Maths and Physics (Biology preferred). Only one of Mathematics or Further Mathematics will be considered. Human Biology may replace Biology but General Studies will not be considered. GCSEs: Grade B / 6 in Biology, Chemistry, English, Mathematics. Double Award combined sciences or equivalent at Grade BB / 66 may replace GCSE grades in sciences. Additional Applied Science and Applied Science will not be accepted. All examination grades must be obtained at the first attempt of each subject. Those

applying with resit qualifications will not be entered into the selection system unless under very exceptional circumstances (for which verified evidence has been provided prior to UCAS application).

## International Baccalaureate:

Overall score of 37 points (including TOK and EE) including 667 at HL in Chemistry and at least one other science subject (Biology preferred). Biology should be taken to at least SL. You must also provide evidence of a qualification at minimum Standard Grade 2 or GCSE B or equivalent in Mathematics and English if these subjects do not form part of your IB diploma. If you are using English at SL as part of our English Language requirement, you must obtain Grade 5. Maths Studies can also be considered in lieu of Maths at SL.

## Cambridge Pre-U Diploma:

D3, D3, D3 and M2 (or combination of D3 and A level grade A). GPR at M2 or a further AS level at grade B can be accepted in lieu of the fourth subject M2. Subject requirements are the same as GCE A Levels (see above).

## Graduates with UK degrees:

To enter the selection system applicants must have achieved, or be predicted to achieve, a 1st or 2:1 honours degree (or recognised equivalent), **plus** school-leaving qualifications with minimum academic requirements at one sitting, as follows:

- SQA Highers: BBBB in S5
- GCE A Levels: BBB in upper sixth

High-quality relevant science qualifications must be achieved at school or in a degree programme. Check with the Admissions Office **prior to application** for recognised equivalencies.

## Access Courses

We only accept two Access courses, which must be used in conjunction with other qualifications. Further information can be found here:

**[www.ed.ac.uk/medicine-vet-medicine/undergraduate/medicine/applying/how-to-apply/requirements/access](http://www.ed.ac.uk/medicine-vet-medicine/undergraduate/medicine/applying/how-to-apply/requirements/access)**

For further information about various UK qualifications, please consult the information here: **[www.ed.ac.uk/studying/undergraduate/entry-requirements](http://www.ed.ac.uk/studying/undergraduate/entry-requirements)**

For countries outside the UK that we commonly accept applications from, please use the following URLs to obtain the most up to date information on requirements. Make sure you read what is relevant to Medicine, as the University generally accepts some qualifications that Medicine does not. **However, please check with the Admissions Office if you are unsure:**

Austria:	<a href="http://www.ed.ac.uk/studying/international/european-union-undergraduate-entry-requirements/a-f/austria">www.ed.ac.uk/studying/international/european-union-undergraduate-entry-requirements/a-f/austria</a>
Belgium:	<a href="http://www.ed.ac.uk/studying/international/european-union-undergraduate-entry-requirements/a-f/belgium">www.ed.ac.uk/studying/international/european-union-undergraduate-entry-requirements/a-f/belgium</a>
Canada:	<a href="http://www.ed.ac.uk/studying/international/country/north-america/canada/qualifications">www.ed.ac.uk/studying/international/country/north-america/canada/qualifications</a>
Croatia:	<a href="http://www.ed.ac.uk/studying/international/european-union-undergraduate-entry-requirements/a-f/croatia">www.ed.ac.uk/studying/international/european-union-undergraduate-entry-requirements/a-f/croatia</a>
Czech Republic:	<a href="http://www.ed.ac.uk/studying/international/european-union-undergraduate-entry-requirements/a-f/czech-republic">www.ed.ac.uk/studying/international/european-union-undergraduate-entry-requirements/a-f/czech-republic</a>
Denmark:	<a href="http://www.ed.ac.uk/studying/international/european-union-undergraduate-entry-requirements/a-f/denmark">www.ed.ac.uk/studying/international/european-union-undergraduate-entry-requirements/a-f/denmark</a>
Finland:	<a href="http://www.ed.ac.uk/studying/international/european-union-undergraduate-entry-requirements/a-f/finland">www.ed.ac.uk/studying/international/european-union-undergraduate-entry-requirements/a-f/finland</a>
France:	<a href="http://www.ed.ac.uk/studying/international/european-union-undergraduate-entry-requirements/a-f/france">www.ed.ac.uk/studying/international/european-union-undergraduate-entry-requirements/a-f/france</a>
Germany:	<a href="http://www.ed.ac.uk/studying/international/european-union-undergraduate-entry-requirements/g-l/germany">www.ed.ac.uk/studying/international/european-union-undergraduate-entry-requirements/g-l/germany</a>
Hong Kong:	<a href="http://www.ed.ac.uk/studying/international/country/asia/east-asia/hong-kong">www.ed.ac.uk/studying/international/country/asia/east-asia/hong-kong</a>
Hungary:	<a href="http://www.ed.ac.uk/studying/international/european-union-undergraduate-entry-requirements/g-l/hungary">www.ed.ac.uk/studying/international/european-union-undergraduate-entry-requirements/g-l/hungary</a>
India:	<a href="http://www.ed.ac.uk/studying/international/country/asia/south-asia/india">www.ed.ac.uk/studying/international/country/asia/south-asia/india</a>
Ireland:	<a href="http://www.ed.ac.uk/studying/international/european-union-undergraduate-entry-requirements/g-l/ireland">www.ed.ac.uk/studying/international/european-union-undergraduate-entry-requirements/g-l/ireland</a>
Italy:	<a href="http://www.ed.ac.uk/studying/international/european-union-undergraduate-entry-requirements/g-l/italy">www.ed.ac.uk/studying/international/european-union-undergraduate-entry-requirements/g-l/italy</a>
Luxembourg:	<a href="http://www.ed.ac.uk/studying/international/european-union-undergraduate-entry-requirements/g-l/luxembourg">www.ed.ac.uk/studying/international/european-union-undergraduate-entry-requirements/g-l/luxembourg</a>
Malta:	<a href="http://www.ed.ac.uk/studying/international/european-union-undergraduate-entry-requirements/m-s/malta">www.ed.ac.uk/studying/international/european-union-undergraduate-entry-requirements/m-s/malta</a>
The Netherlands:	<a href="http://www.ed.ac.uk/studying/international/european-union-undergraduate-entry-requirements/m-s/netherlands">www.ed.ac.uk/studying/international/european-union-undergraduate-entry-requirements/m-s/netherlands</a>
New Zealand:	<a href="http://www.ed.ac.uk/studying/international/country/australasia/new-zealand">www.ed.ac.uk/studying/international/country/australasia/new-zealand</a>

Poland:	<a href="http://www.ed.ac.uk/studying/international/european-union-undergraduate-entry-requirements/m-s/poland">www.ed.ac.uk/studying/international/european-union-undergraduate-entry-requirements/m-s/poland</a>
Portugal:	<a href="http://www.ed.ac.uk/studying/international/european-union-undergraduate-entry-requirements/m-s/portugal">www.ed.ac.uk/studying/international/european-union-undergraduate-entry-requirements/m-s/portugal</a>
Slovakia:	<a href="http://www.ed.ac.uk/studying/international/european-union-undergraduate-entry-requirements/m-s/slovakia">www.ed.ac.uk/studying/international/european-union-undergraduate-entry-requirements/m-s/slovakia</a>
Slovenia:	<a href="http://www.ed.ac.uk/studying/international/european-union-undergraduate-entry-requirements/m-s/slovenia">www.ed.ac.uk/studying/international/european-union-undergraduate-entry-requirements/m-s/slovenia</a>
South Africa:	<a href="http://www.ed.ac.uk/studying/international/country/africa/south-africa">www.ed.ac.uk/studying/international/country/africa/south-africa</a>
Spain:	<a href="http://www.ed.ac.uk/studying/international/european-union-undergraduate-entry-requirements/m-s/spain">www.ed.ac.uk/studying/international/european-union-undergraduate-entry-requirements/m-s/spain</a>
Sweden:	<a href="http://www.ed.ac.uk/studying/international/european-union-undergraduate-entry-requirements/m-s/sweden">www.ed.ac.uk/studying/international/european-union-undergraduate-entry-requirements/m-s/sweden</a>
Switzerland:	<a href="http://www.ed.ac.uk/studying/international/country/europe/switzerland">www.ed.ac.uk/studying/international/country/europe/switzerland</a>
United States of America:	<a href="http://www.ed.ac.uk/studying/international/country/americas/united-states-of-america">www.ed.ac.uk/studying/international/country/americas/united-states-of-america</a>

We also get many applications from the following countries where we only accept GCE A Level and IB but **not** their own country's qualifications: India, Greece, Lithuania, Romania, Australia, West Indies and Caribbean. We also do not accept High School Diplomas from the USA and Canada.

The Singapore Integrated Programme is accepted alone when undertaking A Levels or the International Baccalaureate within the programme.

### Is your country not listed above?

Please check the following web page to obtain further information:  
[www.ed.ac.uk/studying/international/country](http://www.ed.ac.uk/studying/international/country)

### Non-English Speaking Countries

We do have English Language requirements, which are important both for entry to the University and for meeting the requirements to obtain a visa to study in the UK. You can read more about our requirements here:

[www.ed.ac.uk/studying/international/english/ug-english](http://www.ed.ac.uk/studying/international/english/ug-english)

## Academic Requirements – Frequently Asked Questions

### **I have missed out on getting the grades required. Can I still apply?**

No, unfortunately not. We get a large amount of applications from those that are able to meet the minimum requirements. Your application would not be competitive enough if you did not meet them.

### **Can an A grade balance out a C grade?**

No. We are looking for you to be able to achieve consistently.

### **Can I take a subject early?**

There is nothing preventing you from doing this but it will not be considered. If you sit an A Level in Lower Sixth, this will not count towards your required three As at A Level which must be in one sitting. Early GCSEs will not be counted in the selection process (unless it is a B grade in a required subject) but will be valid for meeting subject requirements. If you are undertaking Curriculum for Excellence, early subjects may be considered (see SQA Highers Academic Requirements).

### **Are there any subjects you do not consider?**

There are some, for example General Studies. You can find the University's approved list of subjects we do accept here: [www.ed.ac.uk/studying/undergraduate/entry-requirements/approved-subjects](http://www.ed.ac.uk/studying/undergraduate/entry-requirements/approved-subjects)

### **Can I undertake a crash Higher?**

Yes, possibly. However, you will need to still meet the grade requirements by the end of S5. You can check with the Admissions Office if you need further clarification.

### **Can I apply whilst I am in S5?**

No. In order to be competitive, you need to undertake study in S6. Therefore it would be unfair of us to allow you to apply in S5.

### **Do you consider A\* grades at A Level?**

Yes. Although this will not form part of the entry requirements or offer, the presence of at least one A\* at A Level may be used as part of the selection process.

### **I am taking all the subjects required to be eligible but is there a preference for the other subjects?**

As long as they are on the approved list, we have no preference. There is no advantage or disadvantage in sitting particular subjects, except those required as part of the minimum academic requirements. We recommend you choose subjects you enjoy and are likely to do well in.

### **I have been unsuccessful because I am missing a subject. Can I start it now, add this to my application and still be considered?**

You cannot add qualifications to your application after 15th October. Therefore you would only be able to apply again after you had achieved the qualifications.

### **I am intending to apply in a few years' time. Will the requirements stay the same?**

Not necessarily. As we review our requirements on a yearly basis, we suggest that you check the requirements again just before you apply.

### **What are your requirements for Curriculum for Excellence?**

Applicants must have completed their Highers by the end of S5 and have at least

three taken in one year. If you bypass National 5s, you will need the required subjects to be taken at Higher.

### **Do you accept resits?**

No. Although two module resits at AS level (to be sat prior to completion of A levels) is usually acceptable. Those undertaking the new linear A and AS Levels will not be able to undertake resits. You need to sit all your exams at the same time (e.g. by the end of S5, or in Upper Sixth) and it must be your first attempt at sitting that type of qualification. If you are undertaking the same subject again at the same level (for example GCSE Mathematics and then IGCSE Mathematics) we will only consider the first attempt. Later sittings will also usually not be considered apart from meeting subject requirements. Please see 'Can I take a subject early?' for further details. Resits are not considered as part of the IB or any other qualification. Please check with the Admissions Office if you are unsure.

### **Can I still apply if my predicted grades are below your minimum entry requirements?**

No. If you are able to obtain the grades once you have sat your exams, you could apply the following year.

### **Do you look at bandings for Highers?**

No.

### **I have been ill or had problems whilst studying, what should I do?**

If you have had a prolonged or on-going period of illness, we advise you do not sit exams and instead repeat the year when your health has improved. This would not be classed as a resit. If you were ill or had problems during exams, it is important you apply for extenuating circumstances with the relevant exam board. The University cannot make allowances for grades that fall below the entry requirements due to ill health or other issues. We expect the exam board to make the appropriate adjustment as they are best placed to make a suitable decision.

### **Which English/Maths subject would we prefer in the International Baccalaureate?**

We do not mind and both will be treated equally.

### **I am studying Mathematics and Further Mathematics at A Level. Is this allowed?**

To count towards our entry requirements, we will only consider one of Mathematics and Further Mathematics. If you do decide to study both, we will choose the one you have performed best in, providing they are both studied in Upper Sixth.

### **Do we look at UMS scores?**

No.

### **Does a larger number of subjects increase my chances of being made an offer?**

No, as not everyone has the option to undertake a larger number of subjects in the same year.

### **Do I need to do Advanced Highers?**

It is not an entry requirement but in order to be competitive, you should be at least studying towards some. We recommend a minimum of two Advanced Highers and one further Higher in S6. Conditions are normally set on S6 performance (see entry requirements).

**Can I do a mixture of Highers and Advanced Highers in S6?**

Yes, although we recommend at least two Advanced Highers (preferably Chemistry and Biology) in order to be competitive.

**Why do you recommend Chemistry and Biology at Advanced Higher?**

We recommend these subjects as they best prepare you for study at medical school. You may be disadvantaged in the selection process if you do not study these subjects.

**Do you consider GCSE Short Courses?**

No.

**Do you consider the Scottish/Welsh Baccalaureate?**

For academic scoring purposes, we do not consider either of these baccalaureates. However, there could be skills you take from the Baccalaureate that may help to demonstrate some of the things we are looking for in the non-academic side of your application.

**The combination of qualifications I have isn't listed in your entry requirements, am I eligible?**

Contact us to find out. Some combinations will be suitable and others not. We don't want you to waste an application if you are not eligible.

**If I fail to meet your entry requirements with one qualification, can I do a different qualification instead to make myself eligible?**

No. For example, you cannot do A Levels if you have already studied the International Baccalaureate and failed to achieve the grades required. This is because you have already had one attempt at an eligible qualification. The only option would be to apply as a graduate applicant, so long as you meet the graduate entry requirements.

**Will I get a place if I meet the entry requirements?**

Not necessarily as it is not the only area we assess. As entry to Medicine is so competitive, we also look at UKCAT and non-academic achievements when assessing an application. You can read more about these in this booklet.

**What happens if my qualifications are more than three years old?**

We need your most recent qualification to be within the past three years (from the most recent examination diet before the start of the programme) **and must be relevant to Medicine**. However, if some of your older qualifications that count towards our academic requirements fall outside of the three years, they will still be counted as your first sitting of those qualifications.

**Can I apply part way through my degree?**

No. We do not consider applicants who are studying at University and not in the final year of their programme **in the same academic year in which you apply**. Selectors would not look favourably on those who are unwilling or unable to complete a degree programme. Failure to declare this would be considered dishonest. See the graduate applicant section for more information on applying as a graduate.

**I am on a degree programme but not in my final year. Should I withdraw to apply for Medicine?**

We do not encourage applicants to withdraw from programmes as selectors would not look favourably on those who are unwilling or unable to complete programmes that have been commenced.

**I am a mature applicant. Do I have different entry requirements?**

No. No special concessions are made to mature applicants.

**Is there a lower or upper age limit?**

No.

**My situation is not covered in the requirements. What should I do?**

Contact the Undergraduate Admissions Office (contact details can be found at the back of this booklet).



# Non-Academic Requirements

Although we do not have any stipulations as to what you **must** achieve, we provide guidelines which aim to point you in the right direction for a competitive application.

The non-academic criteria score will take the following into account:

## Personal qualities and skills

- empathy
- interpersonal relationships
- ability to communicate

## Evidence of career exploration prior to application

- understanding of medicine
- work experience and shadowing (diseased, disadvantaged and disabled)

## Breadth and level of non-academic achievements and interests

- social involvement
- school responsibilities
- leadership
- organisational abilities
- cultural, sporting, vocational and voluntary achievements
- interests and hobbies

## Prior experience

We expect you to demonstrate a clear understanding of what a career in medicine entails. A deeper understanding can be achieved by:

- Appropriate work experience or work shadowing, as evidence of an informed decision to apply for a medical programme.
- Talking with medical doctors and medical students.
- Attending a University Open Day and medical conferences/lectures.
- Reading medical literature.

The Admissions Committee recognises that not all applicants have equal opportunities to gain such experience. If it is not possible to get any work experience in a hospital then other alternatives include working in a nursing home, riding for the disabled or volunteer work.

Please **do not** email us your personal statement for feedback prior to your application as this would be deemed as coaching an application and would be unfair to other applicants.

It is important to remember that we are not just looking for a list of achievements and experiences but reflection on these, showing us what you took from them and relating that back to the study and practice of medicine.

## Non-Academic Requirements - Frequently Asked Questions

### **I will not have any work experience prior to submitting my application. Will I be eligible?**

You will still be eligible to apply but we look for significant career exploration. We recognise that applicants have different levels of opportunity available to them to gain work experience and this is taken into account, but there must be strong evidence that you have researched the career. We would not recommend you apply if you cannot demonstrate this.

### **How much experience do I need?**

We do not specify a length of time and we do not assess this on your application. We need you to have experience with diseased, disadvantaged, and disabled individuals. This can be in one or many experiences. We also look at what you have obtained from your experience. It is important you are as sure as you can be that medicine is the right choice for you. You don't want to find out once you start the course that you faint at the sight of blood!

### **Do I need to include every non-academic achievement I have gained?**

No. It is a fine balance but you need to select the ones that show high skill, attainment and variety. We like to see you have different interests that are more than just a passing phase. We want a rounded individual. You might find it helpful to think broadly of different experiences you have, especially those involving work with other people. Medicine can be a stressful career, so we want to see you have ways of winding down and relaxing.

### **Can my referee mention anything towards my non-academic achievement?**

Yes. Although we primarily look at the personal statement, the reference is used in conjunction with it, so your referee can mention such things if they are in a position to.

### **Will I be penalised if I have not attended an Open Day at the University of Edinburgh?**

No. We do recommend that you try to attend one though, as it can provide you with an opportunity to find out more about the programme and speak to staff and students.

### **Are there specific achievements you are looking for that will give advantage, such as the Gold Duke of Edinburgh award?**

No. We do not have a specific list of achievements we are looking for. You should aim to demonstrate what you have gained from your achievements and your commitment to them.

### **Does my work experience need to be undertaken in the UK?**

No.





## UKCAT

The UKCAT was introduced in 2006 as part of the selection process for the majority of the UK University Medical and Dentistry Schools.

All applicants applying to study medicine at Edinburgh **must** sit the UKCAT or apply for an exemption code from the UKCAT consortium. You must take the test or gain exemption prior to applying through UCAS. For example if you are applying in September then you must take the test between June and September. There are test centres across the world, which are listed on the UKCAT website.

**Without a UKCAT score or exemption, your application will not be considered.**

If you reapply to Edinburgh the following year then you must resit the test.

Please do not send your test results to the Admissions Office as we are advised by UKCAT of your score in November. In order to improve your results reaching us directly from UKCAT, we advise that you register for the test using your name as written in your passport (as you would when completing your UCAS form). We will contact you if we cannot find a match.

UKCAT have changed the way exemptions and extenuating circumstances are to be taken into account, passing the responsibility from UKCAT to individual universities. We will publish our policy on this on our UKCAT webpage here:

**[www.ed.ac.uk/medicine-vet-medicine/undergraduate/medicine/applying/how-to-apply/requirements/ukcat](http://www.ed.ac.uk/medicine-vet-medicine/undergraduate/medicine/applying/how-to-apply/requirements/ukcat)**

### How do we use the UKCAT?

The Selection Committee uses your UKCAT score to make a more informed decision about your application. We assess your total UKCAT score (not the average) and your performance in the Situational Judgement Test section. We consider all scores and no applicant will be excluded from selection based on the score achieved in their UKCAT test (although applicants will be excluded if they have failed to take the test and not obtained an exemption).

Once all the scores are received we rank them, divide the cohort into octiles and allocate a score. We also allocate a score to your situational judgement banding. The points are then added to your total score to contribute towards your final ranking.

The score an applicant achieved may be looked at again when final decisions are being made and there are a number of applicants with the same ranked score and limited places left to offer.

For further information on the UKCAT, go to their website – **[www.ukcat.ac.uk](http://www.ukcat.ac.uk)**

## Frequently Asked Questions – UKCAT

### When can I take the test??

You must sit the test in the summer prior to application. You can find registration deadlines on the homepage of the UKCAT website: [www.ukcat.ac.uk](http://www.ukcat.ac.uk)

### I am not based in the UK; do I need to come to the UK to sit the test?

No. There are test centres across the world. You may be in a country that does not have a test centre. If this is the case, you need to apply for an exemption. This still needs to be done by the deadline. Information is available on the UKCAT website.

### Can I revise for the UKCAT test?

You cannot really revise for the UKCAT. However, there are practice tests on the UKCAT website that you can familiarise yourself with.

### Do you recommend courses that are aimed to help prepare for the UKCAT?

We do not have sufficient knowledge of these courses but as you cannot really revise for the UKCAT, we are not sure of the benefits.

### Can I sit the test more than once in a year?

No, this is not allowed. However, if you intend to reapply for Medicine in the next cycle, you must sit the UKCAT test again in the summer before you apply.

### How do you assess the UKCAT section of my application if I have been given an exemption?

As we cannot guarantee what kind of performance you would have achieved if you had sat the UKCAT score, we give you the average UKCAT score that our applicants achieved in that academic cycle.

### I have a disability, should I sit the UKCAT or the UKCATSEN test?

The UKCATSEN test is only available if you are usually allowed additional time in exams. If you have this and can provide written evidence of this when you submit your application, sitting the UKCATSEN test is acceptable.

### Are bursaries available for the UKCAT?

Yes. You can find more information about UKCAT bursaries online here: [www.ukcat.ac.uk/registration/bursaries](http://www.ukcat.ac.uk/registration/bursaries)



# Graduate Applicants

Graduate applicants have different entry requirements to those who apply without a degree.

To enter the selection system, applicants must have achieved, or be predicted to achieve a first or 2:1 honours degree (or recognised equivalent), **plus** school-leaving qualifications with minimum academic requirements at one sitting, as follows:

- SQA Highers: BBBB in S5
- GCE A Levels: BBB in upper sixth
- International Baccalaureate: 34 points overall with 556 at HL

High-quality relevant science qualifications (usually covering Chemistry and Biology) must be achieved in school or a degree programme. Please check with the Undergraduate Admissions Office if you are unsure if your qualifications meet the criteria. If you do not currently meet the science background criteria, we recommend you obtain either Highers or A Levels in the relevant subjects.

Graduate applicants are welcome to send an additional reference, which must be received before the application deadline. The reference should be signed and on headed paper, and can be sent to us via the post or email. Graduates based in the UK or Republic of Ireland who score sufficiently well in the selection process will be invited for interview.

We run multiple mini interviews for those who are successfully shortlisted. Interviews consist of three 10 minute rotations which cover communications skills, critical & ethical reasoning and career exploration (based on your personal statement). Interviewees will have 20 minutes to undertake some preparation work before the interviews commence.

See refer to the rest of the booklet for other general advice regarding requirements and assessment of applications.

## Frequently Asked Questions – Graduate Applicants

**I am a graduate applicant who has obtained my degree in the US or Canada, do these academic requirements apply to me?**

No, you must meet the criteria as stipulated on the country qualifications webpage. This includes undertaking the MCAT if you are still in North America.

**I am based outside of the UK and Ireland, will I be called for interview?**

No. We only call those who are based in the UK or Ireland.

**Do I have to send in an additional reference?**

No. You will not be penalised if you choose not to. It just allows you to supplement your application. We will only look at this at interview stage anyway.

**The 15th October falls on a weekend, so I am worried that my additional reference might arrive after the deadline. Will it be considered?**

Yes we will extend the deadline by a day or two if this is the case and this will be communicated via our Twitter page - [www.twitter.com/EdinburghMBChB](https://www.twitter.com/EdinburghMBChB)

**My school-leaving qualifications are not listed in the requirements. Am I eligible?**

You may be. It depends on the qualification and what grades you achieved. Contact the Undergraduate Admissions Office prior to submitting an application for confirmation of your eligibility.

**I have a postgraduate qualification, will this be considered?**

This will not be taken into account as part of our academic scoring as we only consider qualifications up to a first degree. This is because funding is not freely available after a first degree and therefore is not an option for everyone.

**Can I apply part-way through my degree?**

No. We do not consider applicants who are on course and not in the final year of their programme. Selectors would not look favourably on those who are unwilling or unable to complete a degree programme. Failure to declare this would be considered dishonest.

**I am on a degree programme but not in my final year. Should I withdraw to apply for Medicine?**

We do not encourage applicants to withdraw from programmes as selectors would not look favourably on those who are unwilling or unable to complete programmes that have been commenced.

**Are resits considered?**

Not for your school leaving qualifications. Resits within your degree are acceptable but not after you have completed your degree.

**Do you have a preference on the degree subject?**

No. We are looking for a strong science background, either in your degree or your school leaving qualifications but it does not have to be in both.

**How do you shortlist for interview?**

We look at your academic and UKCAT performance in order to shortlist for interview. Those with the most competitive scores will be invited.

**Will study be similar to my first undergraduate degree?**

Not necessarily. As Medicine is a professional programme, it is far more structured than many other degrees and the level of input required is also greater.

## International Applicants

International applicants are scored in the same way as UK and EU applicants and must also apply through UCAS. Graduate applicants will not be required to attend interview.

Successful applicants are usually required to pay a deposit of a third of a year's fees in order to reserve their place. Applicants requesting a refund for any reason within 14 calendar days after the payment date will be refunded in full. Refund requests received more than 14 days from the payment date will only be considered if the applicant fails to meet the conditions of offer.

Those who become unconditional firm will be provided with a Certificate of Acceptance of Studies (CAS) number, which will enable you to apply for a visa. These are usually issued anywhere from three months prior to you starting the programme, depending on when you become unconditional firm. Please check our International Office website for further guidance on visas:

[www.ed.ac.uk/international-office/immigration](http://www.ed.ac.uk/international-office/immigration)

### Frequently Asked Questions - International Applicants

#### Can I apply for deferred entry?

It is not encouraged, as we have limited places for international applicants. There must be extenuating circumstances for this to be considered and should be approved by the Admissions Office prior to application.

#### I am currently doing military service in my country and am not expected to finish until after the course starts. Can I still apply and just enrol late?

No. You need to have finished any military service prior to the start of the course (preferably prior to September). You can apply for deferred entry in this scenario.

#### If I have a reference or document in a language other than English, will it need translating?

Yes.

#### Will it make any difference if I have already studied in the UK?

As far as your application is concerned, this will make no difference.

#### Will I need an English Language qualification?

Yes. All our applicants, even those from the UK, are required to have some form of English Language qualification. However, the list of eligible English Language qualifications becomes a bit more restricted if you require a visa to study in the UK. Please refer to the Academic Requirements section for further information.

#### I am undertaking the Singapore Integrated Programme. Are there special requirements?

We consider both the A Level and International Baccalaureate strands of the SIP. For the A Level strand we use your UKCAT performance in lieu of GCSEs. To be competitive, we also recommend A Level applicants undertake something at H3 level.

## Disabled Applicants

As a condition of full registration as a medical practitioner, all medical graduates must complete a period of further training after graduation. This is normally in a hospital environment.

The Admissions Committee is therefore required to be able to predict that applicants will have the physical capability to fulfil the responsibilities of such posts effectively and safely. Applicants with disabilities or other health problems are encouraged to seek advice from the Admissions Office prior to UCAS application.

Higher Education Occupational Physicians/Practitioners (HEOPS) have produced a document outlining the fitness standards expected of medical students. You can read this on our website [www.ed.ac.uk/medicine-vet-medicine/undergraduate/medicine/applying/selection](http://www.ed.ac.uk/medicine-vet-medicine/undergraduate/medicine/applying/selection) or at [www.heops.org.uk/guide.php](http://www.heops.org.uk/guide.php)

We assess your application purely on the basis of academic and non-academic suitability as outlined in our entry requirements. Discussions about support requirements will be separate from the application assessment and will only take place once we know an applicant is in offer range.

The University will only refuse a student a place on the grounds of their disability if:

- The chosen course of study leads to a professional qualification and the relevant professional body has regulations which would preclude membership by people with particular impairments (see HEOPS guidance).
- There are overriding health and safety concerns.
- In rare circumstances when a necessary reasonable adjustment cannot be made.

Suitable applicants will be asked for further information prior to offer to make sure they do not fall into any of the three categories above.

You should notify us of any condition at application stage. However, if a condition develops or is diagnosed after this point, even when you become a student, you should notify us so we can look into support arrangements for you.

Further information on our Student Disability Service can be found here:

[www.ed.ac.uk/student-disability-service](http://www.ed.ac.uk/student-disability-service)

# Widening Participation

It is the aim of the College of Medicine and Veterinary Medicine to fully support the University of Edinburgh's initiative to widen participation and thereby create a more diverse student population.

The central principles in selection remain that:

- selection decisions will continue to be based on the assessment of academic potential and aptitude for the respective professions
- by the declaration of transparent criteria, both academic and non-academic, false hope will not be offered to those considering application

Medicine and Veterinary Medicine, at both a UK and Edinburgh level, are privileged in both the number and quality of applicants. Analysis of available data suggests that, because of the severe level of competition for places, the College can most effectively contribute to widening access by recruitment supported by the creation of special opportunities and specific pathways.

Therefore, we support LEAPS, REACH and the 'Pathways to the Professions' Initiative, as well as the University's general contextual admissions policy, which seek to encourage and support applications from those from educational and social disadvantage. More information about eligibility can be obtained from the Widening Participation team.

Further information about contextual admissions at the University of Edinburgh can be found here: [www.ed.ac.uk/student-recruitment/publications-resources](http://www.ed.ac.uk/student-recruitment/publications-resources)

## Care Leavers in Higher Education

Prospective students who identify themselves as having been in care in their UCAS applications will be provided with information about the support systems available to them at the University. With permission, contact will be maintained throughout the MBChB programme to ensure the relevant students are being appropriately supported.

More information about the University of Edinburgh Support for Care Leavers and Looked After Children is available from Student Recruitment and Admissions.

You can find out more about the University's Widening Participation team and the projects and events they are involved with here: [www.ed.ac.uk/student-recruitment/widening-participation](http://www.ed.ac.uk/student-recruitment/widening-participation)

# How to Complete Your UCAS Application

Guidance on how to complete an application is available on the UCAS website... Furthermore, there are certain things we expect on an application, which are listed below. Please note that different medical schools might require different things. There is also a section below for your referee, which might help them write an effective reference. We recommend that you show it to them as it might help them when writing your reference.

## Name (for those requiring visas only)

Please enter your name as it is written on the passport you intend to use when applying for a visa. This is because we will use this when creating your Certificate of Acceptance of Studies. See page 20 for further details on visas.

## Email

Please use an email address that you check regularly and will have access to over the summer period. Email is our main way of contacting you. We also send offer packs and joining packs this way.

## Qualifications

It is important to provide a full set of data when telling us about your qualifications. We want to know both what you have already obtained and also what you are still studying towards. If your qualification has an overall grade and individual subject grades (excluding UMS scores and degree modules, unless resits have been taken and therefore must be declared) then please make sure both are listed. If you are unsure, have a look at the academic requirements and see what is being asked for. These are likely to be what we need to see. You must also **not** omit any information such as resits. If you do not fully declare any qualifications, you may be rejected for not meeting our requirements. Please make sure that your referee provides any predicted grades for examinations yet to be taken (see Reference below).

## Personal Statement

To fit everything in that we, and probably other medical schools, require it is unlikely that your personal statement will be short. UCAS has a limit on how many characters you can use to complete your statement. This means that you will have to be thoughtful in how you word your statement and it is worth taking time over it. If you are not applying whilst still at school and you are not a graduate applicant, please make sure you tell us what you are currently doing or plan to do in your gap year. For guidance on what non-academic skills and activities we are looking for, go to page 12.

## Reference

Your reference should be an **academic** one. If you are applying through a school, they will usually add this to your application form at the end and then submit it for you. If you are not applying from a school, then your form will not be fully submitted until a reference is attached (see UCAS for further details). You will be automatically rejected if a reference is not submitted. Below is information that can help guide your referee:

**Entry into Medicine is extremely competitive. The Edinburgh Medical School does not normally interview school leaving applicants and therefore the reference, alongside the personal statement, is extremely important.**

- Please include predicted grades in the predicted grades section of the UCAS form. **An application cannot be processed without these.** This is a grade you anticipate the applicant to achieve in each of their subjects/qualifications. For non UK qualifications, please **do not** try to convert your grades to a UK system. Please do not provide a range of scores as we will automatically take the lowest of the range.
- We are looking for evidence that the applicant is a well-rounded person, as well as being excellent at science. What are they like as a person? Do they have integrity? Are they honest and responsible? Do they show empathy?
- How does the applicant get on with peers and teachers? Would they make a good leader? Do they have good interpersonal and organisational skills? Are they able to work as part of a team?
- What activities are they involved in at school – sport, music or other clubs and hobbies? Do they help out with students in other years?
- Confirm what you can of the applicant's personal statement regarding extra-curricular activities.
- Do you think they are suitable by temperament for medicine?
- Through research and career exploration the applicant should discover early on that medicine is not just about science but also about communicating with people. It is vital that the applicant understands this and this is why we attach so much importance to this activity.
- Don't repeat how well an applicant has done by giving a summary of exam results.
- Please give clear confirmation of any circumstances which might have led to a poorer result than expected in the exams. **Also advise us of any school policies regarding early sittings or bypassing of examinations.**
- Please tell us if the applicant has overcome educational or social disadvantage.
- We **will not** consider an amended reference after the deadline unless specifically requested by us, so you need to make sure it is accurate on submission.

## Frequently Asked Questions – How to complete your UCAS application

### Can I provide more than one reference?

You can only provide more than one reference if you are a graduate. If you are applying with school-leaving qualifications, you cannot provide any further references, unless requested by us.

### Can I send in supporting information?

We will not normally consider additional information unless it is about extenuating circumstances or has been requested by us.

### Can I amend my application after the deadline?

Not usually. Even if it is exam results, we have to judge the application as it is on 15th October. Not all applicants will be in a position to get new predicted or achieved grades, so this would be unfair. We also do not allow amended personal statements and expect your reference to be correct at the time of submission. Obviously, if there is a factual error in personal details we can amend this. If you are unsure, please contact the Admissions Office to obtain clarification.

### Should I enter all the modules I have taken in my qualification?

We do not need this information on your application. However, you might want to check the guidelines for all the medical schools you are applying to, as some may wish to know about modules. However, you must make resits clear.

### How many medical schools can I apply to?

You can choose up to four medical schools. You have a fifth choice which may be used for an alternative programme without prejudice to demonstrating your commitment to Medicine.

### Do you recommend using your fifth choice?

Yes. It's a good safety net. Entry to medicine is competitive and a fifth choice gives you a fall back if you happen to be unsuccessful.

### Do other Universities see where else I have applied for Medicine?

No. UCAS provides invisibility of any other university choices until you have received all your decisions and decided which offers, if any, to accept.



# How We Assess Your Application

Each application is assessed and scored independently by two selectors. We consider both academic results (achieved or predicted) and non-academic qualities, as well as your UKCAT performance.

Applications are placed in rank order and offers are made to those with the highest scores. Successful applicants are likely to have scored very highly in both academic and non-academic criteria.

Unfortunately, due to the level of competition for a small number of places, many high-quality applicants are unsuccessful. However, it is impossible for us to predict how competitive an application will be until we start to assess applications after the deadline, as applicants are being compared to their own cohort.

As the selection procedure is complex and all the scores compared before a decision is made, there may be a long period between submitting an application and receiving the outcome. Applicants should receive the outcome of their application by the end of the following **March**.

The breakdown of our selection weightings\* is as follows:

**50%** – academic

**30%** – non-academic (15% personal statement/reference and 15% situational judgement section of the UKCAT test)

**20%** – UKCAT (excluding situational judgement)

\* For graduates and mature students who are selected for interview, the interview will account for 30% of the final score, and the remaining 70% will be based on pre-interview academic/UKCAT performance (35% academic, 20% UKCAT and 15% SJT). Please see the Graduate section for further information on shortlisting for interview.

## Frequently Asked Questions – How we assess your application

### Am I likely to hear before March?

Some unsuccessful applicants may be notified earlier than this, but the majority of applicants will hear in March. It is really helpful to us at this stage, when selection is in progress, if you could keep your enquiries regarding the progress of your application to a minimum so we can focus on getting your outcome to you as quickly as possible. We will update Twitter with any important information (@EdinburghMBChB). We may contact you through EUCLID or via email to ask for additional information. You can read more about EUCLID here:

[www.ed.ac.uk/student-systems/support-guidance/applicants](http://www.ed.ac.uk/student-systems/support-guidance/applicants)

### Who are the people that look at my application?

Your application will initially be read by staff in the Admissions Office to check you are academically eligible. If you pass that stage, two members of the Admissions Selection Committee will assess your application independently. The Admissions selectors are mainly practising doctors and there are also some biomedical scientists who teach on the MBChB programme.

### Is it competitive?

Yes. Please find the link to MBChB Admissions Statistics:

[www.ed.ac.uk/medicine-vet-medicine/undergraduate/medicine/applying/how-to-apply/admissions-stats](http://www.ed.ac.uk/medicine-vet-medicine/undergraduate/medicine/applying/how-to-apply/admissions-stats)

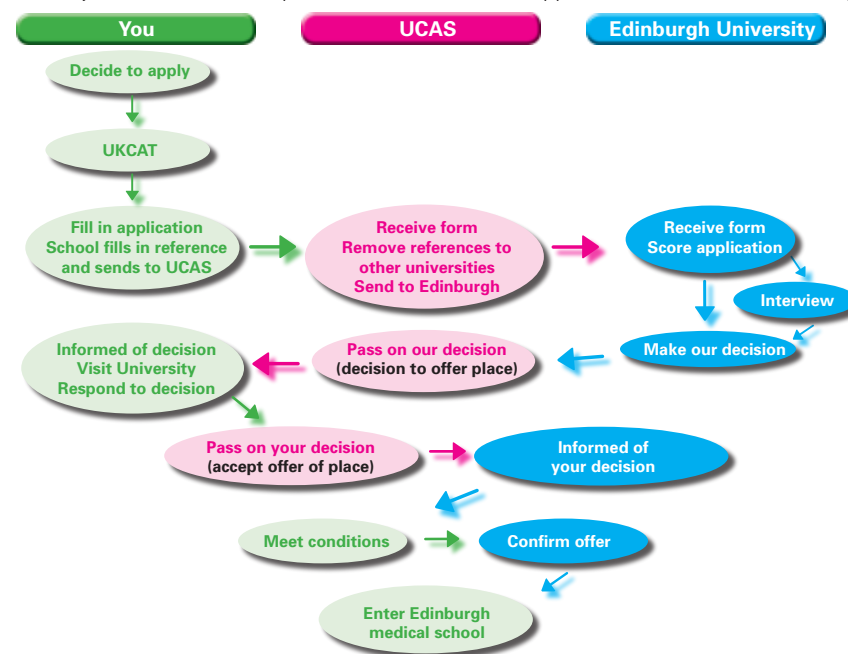
### Will there be one factor that will mean I am unsuccessful?

If you meet all the minimum entry requirements and are considered competitive enough to fully score, it will simply be the sum of all parts of your application that determines whether you are successful or not. The only time that we may refer to a single part is if we only have a few remaining places left to offer but a larger number of applicants on the same application score. In this instance, we would revisit your performance in the UKCAT, and those who have performed best will obtain the remaining places.

### What impact does my fee status have?

In Scotland, fee status is determined by a number of factors. We have a different number of places available depending on the way your place is funded. We do not look at your fee status as part of the assessment stage of each application. However, once applications are assessed, they split into their fee status categories (Scotland/EU, Rest of UK and Overseas) in order to fill the relevant places for those fee categories. Therefore applicants are only competing with other applicants within their own fee category. Further information about fee categories can be found here: [www.ed.ac.uk/studying/undergraduate/fees-finance/fee-status](http://www.ed.ac.uk/studying/undergraduate/fees-finance/fee-status). Further information about the number of places available for Medicine can be found here: [www.ed.ac.uk/medicine-vet-medicine/undergraduate/medicine/applying/how-to-apply/procedure](http://www.ed.ac.uk/medicine-vet-medicine/undergraduate/medicine/applying/how-to-apply/procedure)

Below you can see how the process flows between an applicant, UCAS and the University:



# The Outcome of Your Application

Once all applications have gone through the selection process, we are then in a position to decide who is to be made an offer. The number of students we can accept is controlled by the process of medical workforce planning that takes place in the Department of Health. This in turn impacts on the number of places funded by the Scottish Funding Council and the number of places we have for students from other parts of the UK. We usually make more offers than we have places as not all applicants accept their offer. All applicants should hear from us regarding the outcome of their application through EUCLID and UCAS Track, although in some instances we may contact you directly via email first.

## Successful Applicants

Successful applicants will all have conditions to meet. All offer holders will be required to verify their achieved qualifications and at least one non-academic achievement declared on their UCAS form and obtain a satisfactory PVG scheme disclosure (see Protecting Vulnerable Groups Scheme for further information). Some applicants who still need to pass exams may also have academic conditions in their offer. Offers will only become unconditional once all academic and non-academic conditions have been met, so it is in your interest to get documentation to us sooner rather than later.

If you are successful you will receive an electronic offer pack. If you select us as your firm choice you will also receive a PVG Scheme application form. Once your application is unconditional firm you will receive an electronic joining pack (from July onwards).

When sending in supporting documentation, it is important that you send in **originals**. We recommend that these are sent by recorded delivery and include a return recorded delivery envelope. We endeavour to return documentation within one working day of receipt. Originals can also be brought to the College Office and can be checked immediately. Please contact the Admissions Office for confirmation of availability before arriving.

## Unsuccessful Applicants

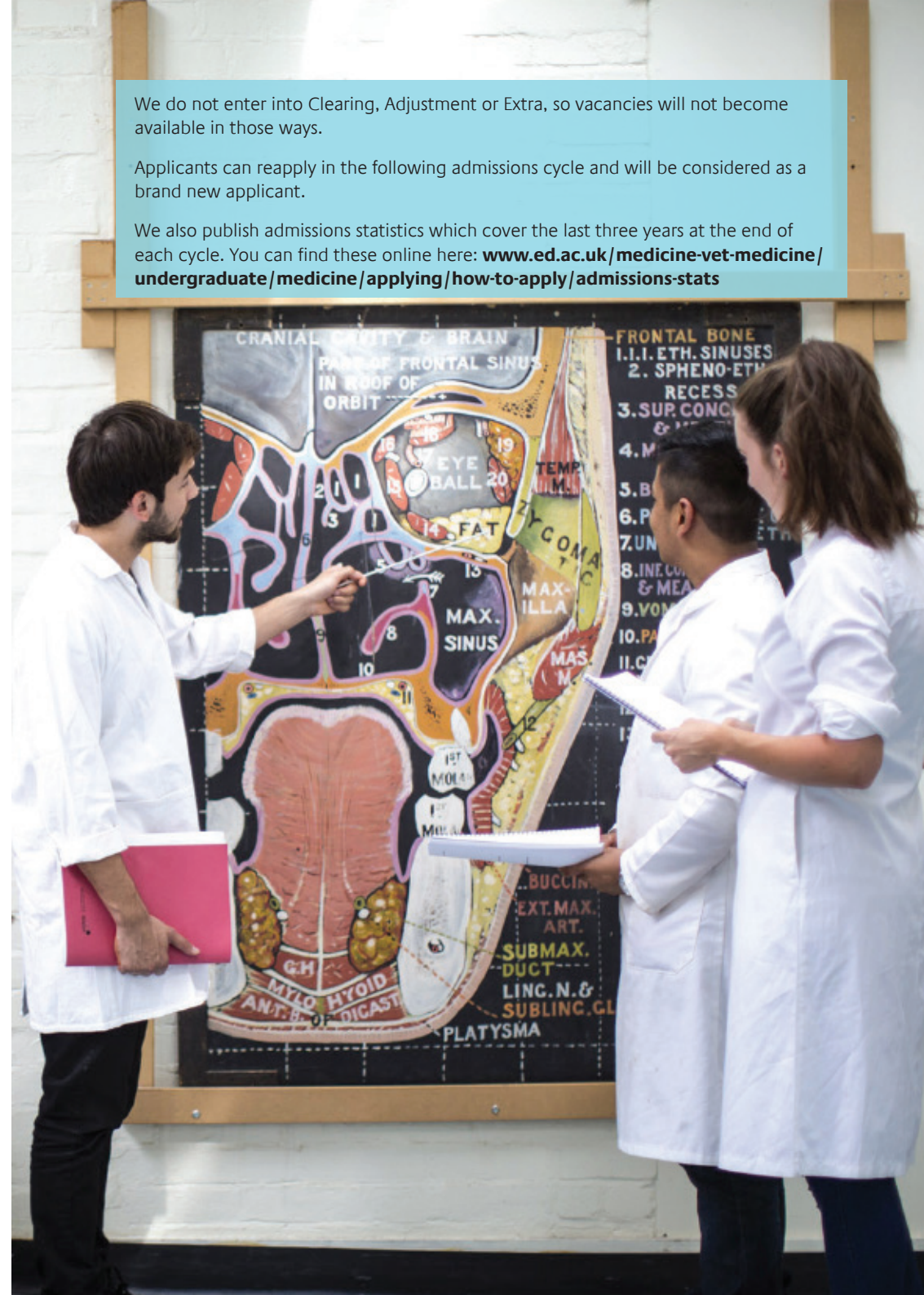
We are aware that many of our unsuccessful applicants would make suitable doctors. Sadly, due to the number of places we have, not everyone can obtain an offer. However, we do offer the opportunity to obtain feedback. We do need the request in writing but this can be via email, to [medug@ed.ac.uk](mailto:medug@ed.ac.uk).

Whilst the Medical School does wish to be helpful in responding to applicants, it is often difficult to discuss the basis of an unsuccessful application other than to state that the rank order place determined by the awarded score was insufficient to make an offer possible. Performance is also indicated on a scale from excellent, good, average to below average.

We do not enter into Clearing, Adjustment or Extra, so vacancies will not become available in those ways.

Applicants can reapply in the following admissions cycle and will be considered as a brand new applicant.

We also publish admissions statistics which cover the last three years at the end of each cycle. You can find these online here: [www.ed.ac.uk/medicine-vet-medicine/undergraduate/medicine/applying/how-to-apply/admissions-stats](http://www.ed.ac.uk/medicine-vet-medicine/undergraduate/medicine/applying/how-to-apply/admissions-stats)





# Protecting Vulnerable Groups Scheme

In common with all UK medical schools, applicants to the Medicine programme are required to complete a criminal record check.

The main purpose of this check is to ensure that medical students can safely have contact with vulnerable adults and children, which is a feature of many healthcare courses and professions.

The Protecting Vulnerable Groups (PVG) Scheme is run by Disclosure Scotland. The PVG scheme is an on-going disclosure database that allows membership 'for life', which should cut down on the need to complete a detailed application every time a check is required. Those parties who declare an interest in your membership will be notified if any new vetting information arises. Information is collected on a continual basis after PVG membership, thus ensuring that any new critical information can be acted on promptly.

All UK, EU and International applicants are required to join the scheme. A Criminal Records Bureau (CRB) check cannot be used in lieu of a PVG check. Those who have not lived in the UK before can either obtain a Certificate of Good Conduct from their own country, or complete a self-declaration form. Once in the UK, individuals will be required to complete a PVG application.

The Admissions Office sends out an application form and guidance notes once you have accepted your offer.

You can find out further information about the PVG scheme through the following websites:

[www.disclosurescotland.co.uk/disclosureinformation/pvgscheme.htm](http://www.disclosurescotland.co.uk/disclosureinformation/pvgscheme.htm)  
[www.scotland.gov.uk/Publications/2011/08/04111811/1](http://www.scotland.gov.uk/Publications/2011/08/04111811/1)



# Other Things to Consider...

## Choosing Medicine for YOU

Medicine is a demanding but rewarding career choice. It requires a lot of work, from pre application through to practising as a doctor. You need to make sure that medicine is the right career for you and you are not considering it because other people are advising you to apply or that your friends are applying.

## Choosing the Right University and Town/City

You will be studying for at least five years so you need to be happy with where you will be living and the facilities on offer. Not every location will necessarily meet your needs, so do some investigating and visit if you can.

## Typing Skills

You will find that many assessments in the MBChB programme at Edinburgh take place on a computer. The more comfortable you are with using a keyboard at a proficient speed, the easier you should be able to cope with this type of exam.

## Fitness to Practise

The University has a responsibility to ensure that students studying on a programme that involves practical training in a clinical environment and that leads to a professional registrable qualification are fit to practise. This is assessed according to the requirements and standards of the profession the student wishes to enter.

## Health Checks and General Fitness

The Department of Health recommends that students admitted to the MBChB are required to undergo viral screening for hepatitis B, hepatitis C and HIV, and to be immunised against hepatitis B. This is therefore required as a part of induction for the MBChB.

A positive result in any test will not necessarily preclude entry to the MBChB but would need to be investigated further.

Higher Education Occupational Physicians/Practitioners (HEOPS) have produced a document outlining the fitness standards expected of medical students which can be read here: <http://heops.org.uk/guide.php>

## Omitting Information

It is not in your interest to omit important information such as resits, time out of school, convictions etc. It would be regarded as dishonest, which is not a desirable trait for a potential doctor and could question your fitness to practise. If you are unsure whether to include a particular piece of information, get in touch.

## Understanding What is Expected of You

Practising as a doctor requires high professional standards. You can find out more from the GMC publication, Good Medical Practice at

[www.gmc-uk.org/guidance/good\\_medical\\_practice.asp](http://www.gmc-uk.org/guidance/good_medical_practice.asp)

## Our degree programme

You can find out more about our degree online here:

[www.ed.ac.uk/medicine-vet-medicine/undergraduate/medicine/](http://www.ed.ac.uk/medicine-vet-medicine/undergraduate/medicine/)

## Year 3 – The Intercalated Honours Year

During this year students study a scientific discipline in depth and submit a dissertation. Honours programmes include Biochemistry, Medical Biology, Experimental Medicine, Developmental Biology, Evolutionary Biology, Reproductive Biology, Molecular Biology, Infectious Disease, Epidemiology, International Public Health Policy, Genetics, Immunology, Neuroscience, Physiology, Pharmacology, Pharmacology with Industrial Experience, Psychology, Sports Science Medicine and Zoology. Upon completion of the MBChB you will also be awarded with a Bachelor of Medical Sciences Honours degree if you are successful in year 3.

Exemptions from this year **may** be granted in certain cases, such as graduates with prior research experience

---

## Visiting the University

We have several Open Days throughout the year. Booking usually opens approximately six weeks prior to the event. You can obtain up-to-date information about these days here: [www.ed.ac.uk/studying/undergraduate/open-day](http://www.ed.ac.uk/studying/undergraduate/open-day)

As well as being able to find out about student life at the University, there is also a separate session available on the same day that focuses on Medicine, where potential applicants and parents can attend talks, meet members of staff, chat to current students, and have a tour of the medical library and the clinical skills suite.

We do not offer tours of the medical facilities due to patient confidentiality. However, general tours of the University can be arranged through the Student Recruitment and Admissions office: [www.ed.ac.uk/studying/undergraduate/visiting](http://www.ed.ac.uk/studying/undergraduate/visiting)

If you would like to speak to a member of Medical Admissions staff, then please contact the CMVM Undergraduate Admissions office with as much notice as possible and we will try to arrange someone to meet with you.

Successful applicants are also invited to a post-offer visit day, which allows offer holders more time to familiarise themselves with the curriculum and what the University has to offer, in order to help them make an informed decision when deciding where to study.

## Useful Contacts

### Accommodation Services

+44 (0)131 651 2042  
accom.allocations@ed.ac.uk  
[www.accom.ed.ac.uk](http://www.accom.ed.ac.uk)  
[www.twitter.com/uoeliving](https://twitter.com/uoeliving)

### Edinburgh University Students' Association (EUSA)

+44 (0)131 650 2656  
advice@eusa.ed.ac.uk  
[www.eusa.ed.ac.uk](http://www.eusa.ed.ac.uk)  
[www.twitter.com/EUSA](https://twitter.com/EUSA)

### International Office

+44 (0)131 650 4296  
enquiries.international@ed.ac.uk  
[www.ed.ac.uk/international-office](http://www.ed.ac.uk/international-office)  
[www.twitter.com/IntOffice\\_UoE](https://twitter.com/IntOffice_UoE)

### CMVM Undergraduate Admissions Office (for Medicine enquiries)

+44 (0)131 242 6407  
medug@ed.ac.uk  
[www.ed.ac.uk/medicine-vet-medicine](http://www.ed.ac.uk/medicine-vet-medicine)  
[www.twitter.com/EdinburghMBChB](https://twitter.com/EdinburghMBChB)

### Health Careers – Careers Advice

+44 (0)345 60 60 655  
[www.healthcareers.nhs.uk/](http://www.healthcareers.nhs.uk/)  
[www.twitter.com/NHS\\_MedCareers](https://twitter.com/NHS_MedCareers)  
[www.twitter.com/NHS\\_Careers](https://twitter.com/NHS_Careers)

### Scholarships and Bursaries – Scholarships and Student Funding Services

+44 (0)131 651 4070  
studentfunding@ed.ac.uk  
[www.ed.ac.uk/student-funding](http://www.ed.ac.uk/student-funding)  
[www.twitter.com/UoEStudentFunds](https://twitter.com/UoEStudentFunds)

### The Students Awards Agency for Scotland (SAAS)

0845 111 1711  
saas.geu@scoland.gsi.gov.uk  
[www.saas.gov.uk](http://www.saas.gov.uk)

### Student Disability Service

+44 (0)131 650 6828  
disability.service@ed.ac.uk  
[www.ed.ac.uk/student-disability-service](http://www.ed.ac.uk/student-disability-service)

### Student Fees and Funding – Scholarships and Student Funding Services

+44 (0)131 650 2230  
fees@ed.ac.uk  
[www.ed.ac.uk/student-funding/fees](http://www.ed.ac.uk/student-funding/fees)

### Student Finance England

0845 300 5090  
[www.direct.gov.uk/studentfinance](http://www.direct.gov.uk/studentfinance)

### Student Finance Northern Ireland

0845 600 0662  
[www.studentfinanceneni.co.uk](http://www.studentfinanceneni.co.uk)

### Student Finance Wales

0845 602 8845  
[www.studentfinancewales.co.uk](http://www.studentfinancewales.co.uk)

### Student Recruitment and Admissions (SRA)

+44 (0)131 650 4360  
sra.enquiries@ed.ac.uk  
[www.ed.ac.uk/student-recruitment](http://www.ed.ac.uk/student-recruitment)  
[www.twitter.com/ApplyEdinburgh](https://twitter.com/ApplyEdinburgh)

### UCAS

+44 (0)871 4680468  
enquiries@ucas.ac.uk  
[www.ucas.com](http://www.ucas.com)  
[www.twitter.com/ucas\\_online](https://twitter.com/ucas_online)

### UKCAT

+44 (0)161 855 7409 (only to be used if website does not answer query)  
ukcatcustomerservices@pearson.com  
[www.ukcat.ac.uk](http://www.ukcat.ac.uk)  
[www.twitter.com/UKCATest](https://twitter.com/UKCATest)

### Widening Participation

+44 (0)131 651 1755  
sra.enquiries@ed.ac.uk  
[www.ed.ac.uk/student-recruitment/widening-participation](http://www.ed.ac.uk/student-recruitment/widening-participation)  
[www.twitter.com/PathwaysEdin](https://twitter.com/PathwaysEdin)



[www.twitter.com/EdinburghMBChB](https://www.twitter.com/EdinburghMBChB)



[www.facebook.com/EdinburghMBChBAdmissions](https://www.facebook.com/EdinburghMBChBAdmissions)

This publication can be made available in alternative formats on request.

All information correct at time of going to print. No part of this publication may be reproduced without written permission of the University.