



THE UNIVERSITY *of* EDINBURGH

A Guide to Access and Facilities

Talbot Rice Gallery



Talbot Rice Gallery

The University Of Edinburgh
Old College, South Bridge
Edinburgh
EH89YL

0131 650 2210

[Talbot Rice Map Link](#)

Alternative Format

If you require this document in an alternative format (e.g. large print) please contact the Estates and Buildings Department or email david.casey@ed.ac.uk, telephone 0131 650 2470 or write to:

Estates and Buildings

The University of Edinburgh
Design Group Office
11 Infirmary Street
Edinburgh
EH1 1NP



Personal Emergency Evacuation Plan

A Personal Emergency Evacuation Plan (PEEP) is required for all staff and students unable to self-evacuate in an emergency. Provision for staff/students/visitors who are unable to self-evacuate is the responsibility of the organiser of the class/lecture/event/meeting. While the School is responsible for preparing this, staff and students requiring assistance should confirm the evacuation arrangements”.

Table of Contents

Introduction.....Page 4

Location.....Page 4

Parking.....Page 6

External Access Routes.....Page 7

Building Entrances.....Page 9

Internal Access & Facilities.....Page 10

Lifts.....Page 12

Stairs.....Page 13

Toilets.....Page 14

Room Directory.....Page 15

Floor Plans.....Page 16

Opening Hours.....Page 20

Contact Information.....Page 21

Links.....Page 22

Building Facilities



Introduction

Talbot Rice Gallery is the public Art Gallery for the University of Edinburgh. Being part of the University allows Talbot Rice to collaborate with a range of departments, academics and students to make distinct exhibitions. The gallery has worked with most departments across the University, working recurrently with items from University of Edinburgh Collections. The gallery has historic links and frequently collaborates with the University and Edinburgh College of Art, through providing support for students and unique opportunities including internships, volunteering positions and student-curated exhibitions.

In addition to this the gallery runs a regular programme of events for local schools as well as creating partnerships with community groups to ensure that participation in our programme is wide ranging and accessible to all. It is the galleries view that contemporary art is at its most vital when it creates new connections between different disciplines, engages people with varied specialist understandings and forges new pathways between the present and the past.

Location

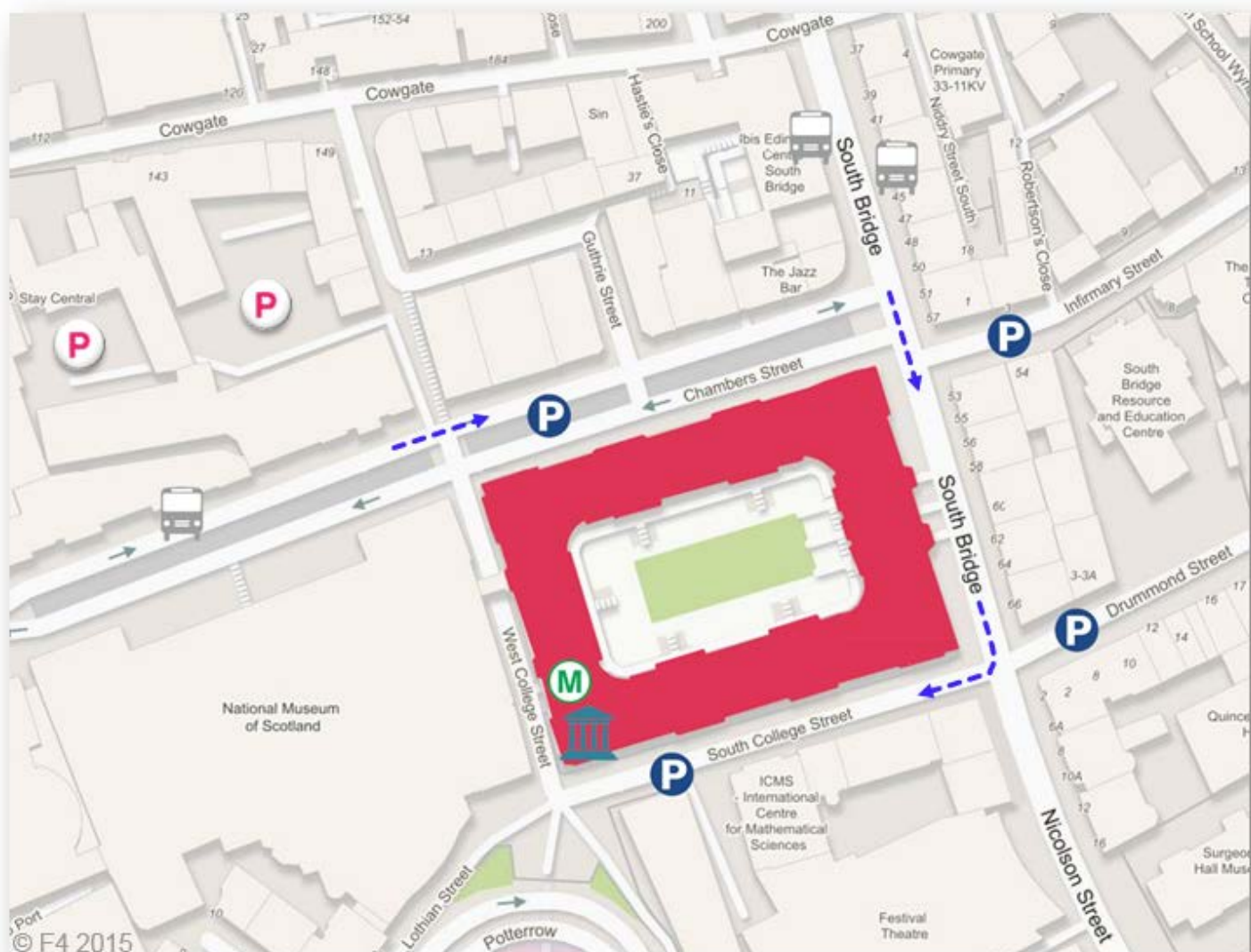
The Talbot Rice Gallery is located to the rear of the Old College within the central area.

The Talbot Rice Gallery can be accessed from West College Street, South College Street and from South Bridge via the Old College Quad. Please see **External Access Routes** for more details.

The nearest railway line is at Waverley Station in the City Centre. There are bus services which operate between Princes Street and South Bridge. The nearest bus stops are located within 350 metres of the gallery. Details of timetables are available from Lothian Buses, from their offices within the city and online from www.mybustracker.co.uk.

Persons with mobility difficulties arriving by vehicle can access the Talbot Rice Gallery from South College Street.

The Talbot Rice Gallery Location Map



Talbot Rice Gallery



Pay & Display Parking



Main Entrance Access Point (Level)



University Parking (Permit)



Public Transport Bus Stop



Vehicle Access Routes

Parking

There are numerous parking bays located close to the Talbot Rice Gallery but no free parking; all parking bays being permit or pay and display.

Pay and Display Parking

The closest City of Edinburgh Council pay and display parking is located on Chambers Street and South College Street. There is additional parking available on Drummond Street and Infirmary Street. Please note that Infirmary Street is on a steep gradient.

Disabled Parking Bays

There are currently no disabled parking bays located within close proximity to the Talbot Rice Gallery. There is ample parking for blue badge holders on Chambers Street and South College Street.



South College Street

University Car Parks

The closest University car park is located to the rear of Minto House. This car park has an uneven cobbled surface and offers a good number of parking bays.



Minto House car park entrance



External Access Routes

The Talbot Rice Gallery is located on West College Street. Please note that West College Street is on a steep gradient and that all access routes are currently not recommended for wheelchair users without assistance.

Access Route from South Bridge via South College Street

Please note that this is the most accessible route for wheelchair users.

There is level access to South College Street from footpaths located along South Bridge. There are two paved footpaths which run the length of South College Street; footpaths have a shallow gradient and incorporate dropped kerbs. From the end of South College Street pedestrians must cross a road with an uneven surface to access the gallery entrance on West College Street.



South College Street



West College Street

Access Route from Chambers Street via West College Street

The Talbot Rice Gallery can be accessed from Chambers Street via West College Street. This route incorporates a paved footpath with a steep gradient and a limited number of dropped kerbs. Pedestrians must cross a road with an uneven surface to access the gallery entrance on West College Street.

Please note that West College Street is currently closed to vehicles due to refurbishment works at Old College. The footpath remains in use.



West College Street Access Point



West College Street

Access Route from South Bridge via the Old College Quad

Please note that this route is inaccessible to wheelchair users and may prove difficult for persons with mobility difficulties.

The Old College Quad can be accessed via a large gated entrance located on South Bridge. From this entrance there is a paved footpath with a steep gradient which leads to the quad. The Talbot Rice Gallery entrance is located to the rear of the quad.



Paved gradient leading to the quad



Old College Quad

From the rear of the quad there are two flights of steps which provide access to the gallery entrance. Please note that these steps are of stone construction and currently do not incorporate contrasting nosings. There are signs located in this area which provide directions to the gallery entrance.



Steps leading from the quad



Gallery Entrance

Building Entrances

There is a single entrance to the Talbot Rice Gallery.

[See Ground Floor Plan For Location](#)

Entrance 1

This entrance can be accessed via a doorway located on West College Street or a flight of steps from the Old College Quad. Entrance 1 provides access to the Ground Floor of the building and is located on a level paved surface.



Footpath leading to Entrance 1



West College Street Access point

Entrance 1 consists of two sets of manually operated double doors. Please note that the external doors are held open during normal building opening hours. The internal doors are glazed, open in both directions and will permit the passage of a wheelchair.

The main staircase and the internal lift can be accessed from this entrance via a shallow gradient. There is a set of timber double doors located adjacent to the entrance which provide access to the internal lift. These doors are held open during normal building opening hours.



Entrance 1



Doors leading to the internal lift

Internal Access & Facilities

There is ample circulation space throughout the Second Floor of the gallery and some areas on the Third Floor. All doors within corridors are held open, will permit the passage of a wheelchair and incorporate door handles at an accessible height.

Reception

The reception desk is located on the Second Floor of the building within Gallery 1. There is ample circulation space throughout the gallery and the reception can be easily approached by wheelchair users. The reception desk incorporates a lowered section within comfortable reach of a wheelchair and is equipped with an induction loop system. The reception can provide directions, information on exhibitions and answer general enquiries.



Reception

Gallery 1

Gallery 1 is located on the Second Floor of the building and can be accessed directly from the lift or stairs. This gallery has a level timber surface and offers ample circulation space.

The Gallery 1 Mezzanine is located on the Third Floor and can be accessed via the internal lift or stairs. The mezzanine has a level timber surface and offers ample circulation space. There is level access to Gallery 3 from the Gallery 1 Mezzanine via a short ramp with a shallow gradient.



Gallery 1

Gallery 2

Gallery 2 is located on the Second Floor and can be accessed from Gallery 1 via a stair lift or a flight of steps. This gallery has a level timber surface and offers ample circulation space. There is a narrow curved staircase located to the rear of the gallery which provides access to the Third Floor and the Gallery 2 Mezzanine. Level access to the mezzanine is only possible via the internal lift.

Please note that the Gallery 2 Mezzanine is narrow and offers restricted manoeuvring/ turning space. This area is currently not recommended for wheelchair users.



Gallery 2

Gallery 3

Gallery 3 is located on the Third Floor of the building and can be accessed via the internal lift or stairs. Gallery 3 has a level timber surface and offers ample circulation space. Please note that there is a short ramp with a shallow gradient at the gallery access point.

From Gallery 3 there is level access to the Gallery 2 Mezzanine. Please note that the Gallery 2 Mezzanine is narrow and offers restricted manoeuvring/ turning space. This area is currently not recommended for wheelchair users.



Gallery 3

Lifts

There is a single passenger lift within the gallery.

[See Floor Plans For Location](#)



The passenger lift is located adjacent to the reception and serves all floors within the building.

The lift call points and car controls are at an accessible height:

- The lift car controls are within comfortable reach of a wheelchair user.
- The external control panel does not incorporate braille markings.
- The lift has an alarm and emergency call point.
- The contrast between floor and wall surfaces good.
- There is no induction loop system.
- There is no audible announcer.
- The lift has a mirror on the side wall.
- The lift car interior has a single handrail.
- There is a visual floor indicator.
- The lighting level in the lift is good.
- Lift doors have pressure sensors.

There is a single stair lift located within the gallery.

[See Floor Plans For Location](#)



This stair lift is located on the Second Floor of the building and provides access between Galleries 1 and 2. The stair lift remains active at all times and incorporates controls within comfortable reach of a wheelchair user.

If you require the use of the stair lift please contact the reception for assistance.

Stairs

There are six staircases within the Talbot Rice Gallery.

[See Floor Plans For Location](#)

All staircases incorporate contrasting nosings on steps and handrails to both sides.

The six staircases are listed below:



Staircase 1

This staircase is located adjacent to Entrance 1. Staircase 1 serves all floors within the building. This staircase acts as an escape stair from the upper floors.



Staircase 2

This staircase is located within close proximity to the lift. Staircase 2 serves the Second and Third Floors.



Staircase 3

This staircase is located close to Staircase 2 and acts as a fire escape. Staircase 3 serves all floors within the building.



Staircase 4

This staircase is located to the rear of the Gallery 2. Staircase 4 serves the Second and Third Floors.



Staircase 5

This staircase is located to the rear of Gallery 2 and acts as an evacuation staircase. Staircase 5 serves the Ground, First and Second Floors.



Staircase 6

This staircase is located adjacent to the staff offices on the Second Floor and acts as an evacuation staircase. Staircase 6 serves all floors within the building.

Toilets

See Floor Plans For Location

Toilets are available on floors as follows:

- Standard Male and Female toilets are located on the Second Floor.
- Accessible toilets are located on the Second Floor.

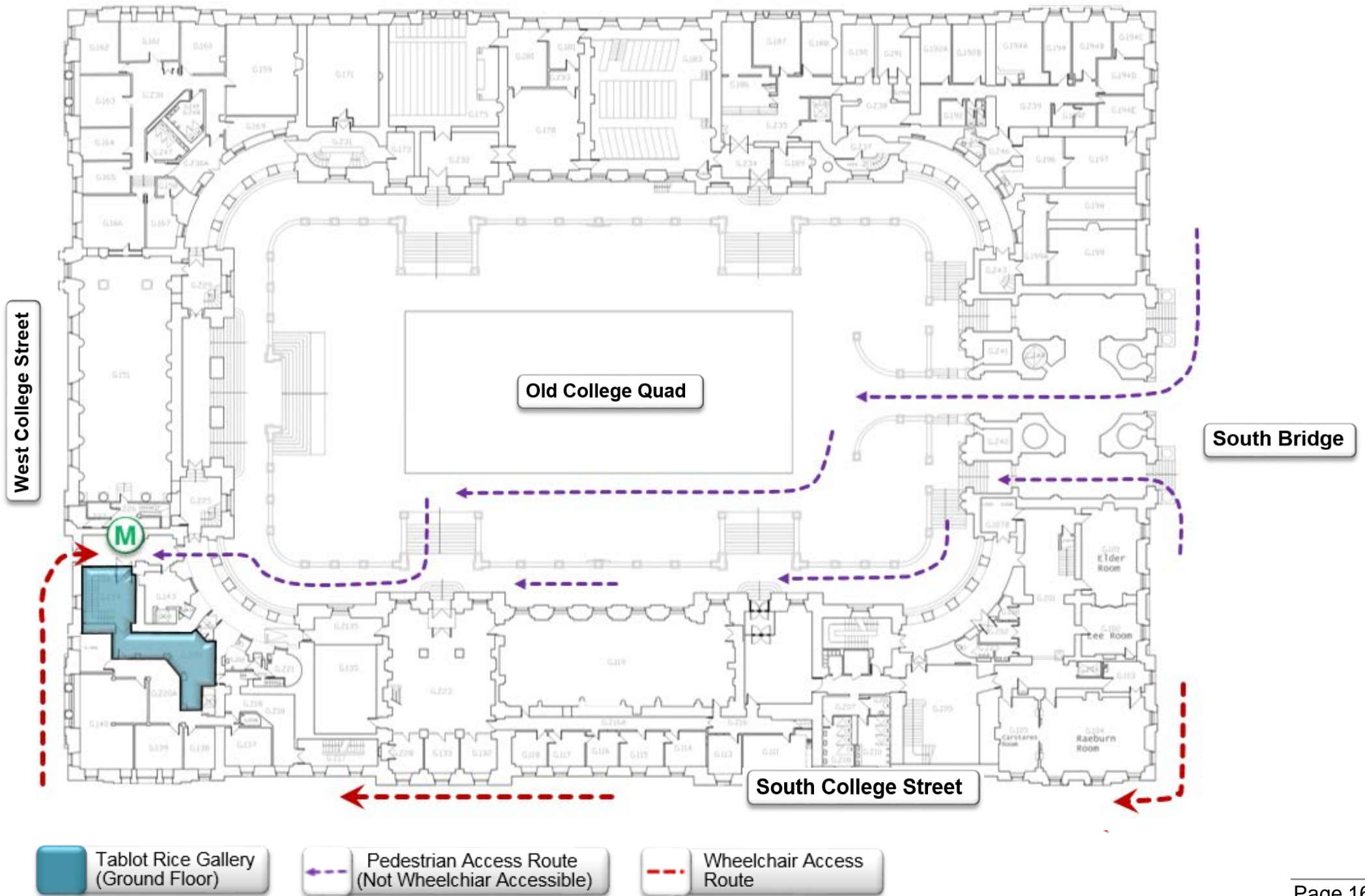
The accessible toilets incorporate the following:

- There is right hand lateral transfer space.
- There is sufficient manoeuvring space.
- There is an emergency pull chord.
- The door opens outward.
- The width of the accessible toilet door is suitable for wheelchairs.
- There are suitable dropdown and support rails to assist transfer.
- The tap type is lever operation.
- There are no coat hooks.
- The contrast between the grab rails and wall is poor.
- The contrast between the walls and floor is good.
- The lighting level in the cubicles is good.
- The accessible toilet incorporates baby changing facilities.

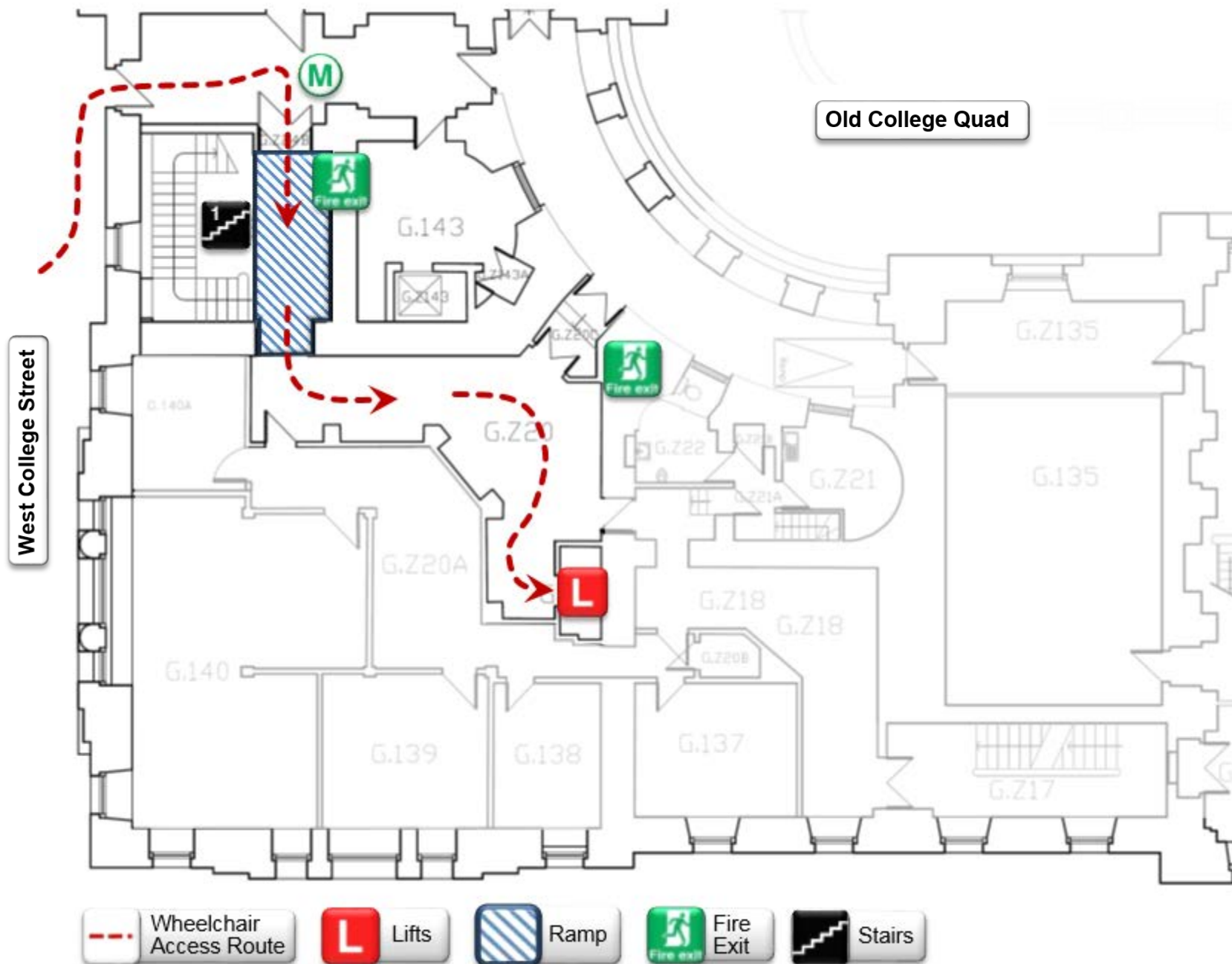
Room Directory

Third Floor	<p>Gallery 1 Mezzanine</p> <p>Gallery 2 Mezzanine</p> <p>Gallery 3</p>
Second Floor	<p>Toilets</p> <p>Staff Kitchen</p> <p>Staff Offices</p> <p>Reception</p> <p>Gallery 1</p> <p>Gallery 2</p>
Ground Floor	<p>Lift Access</p> <p>Stair Access</p>

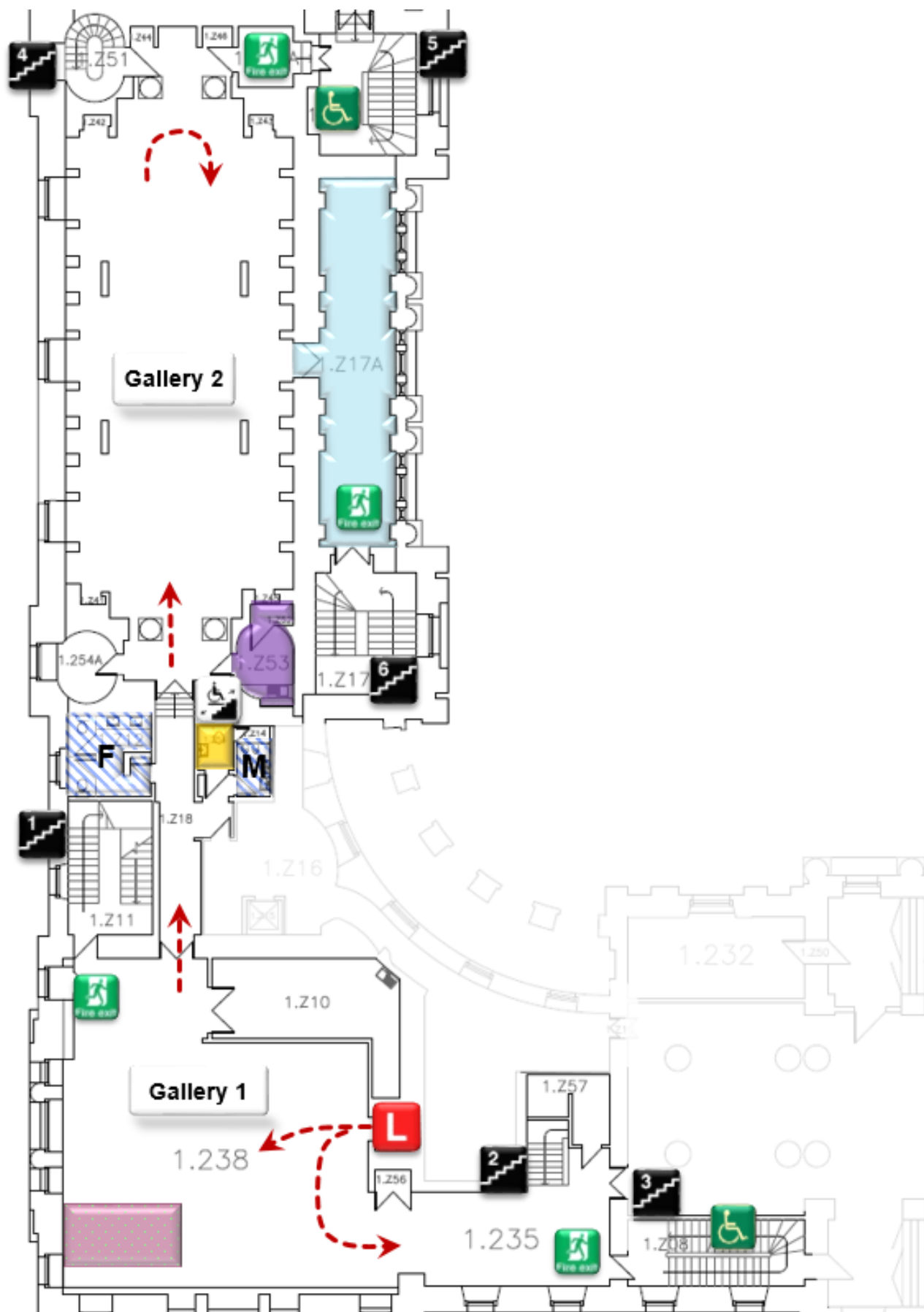
Ground Floor Plan - Old College



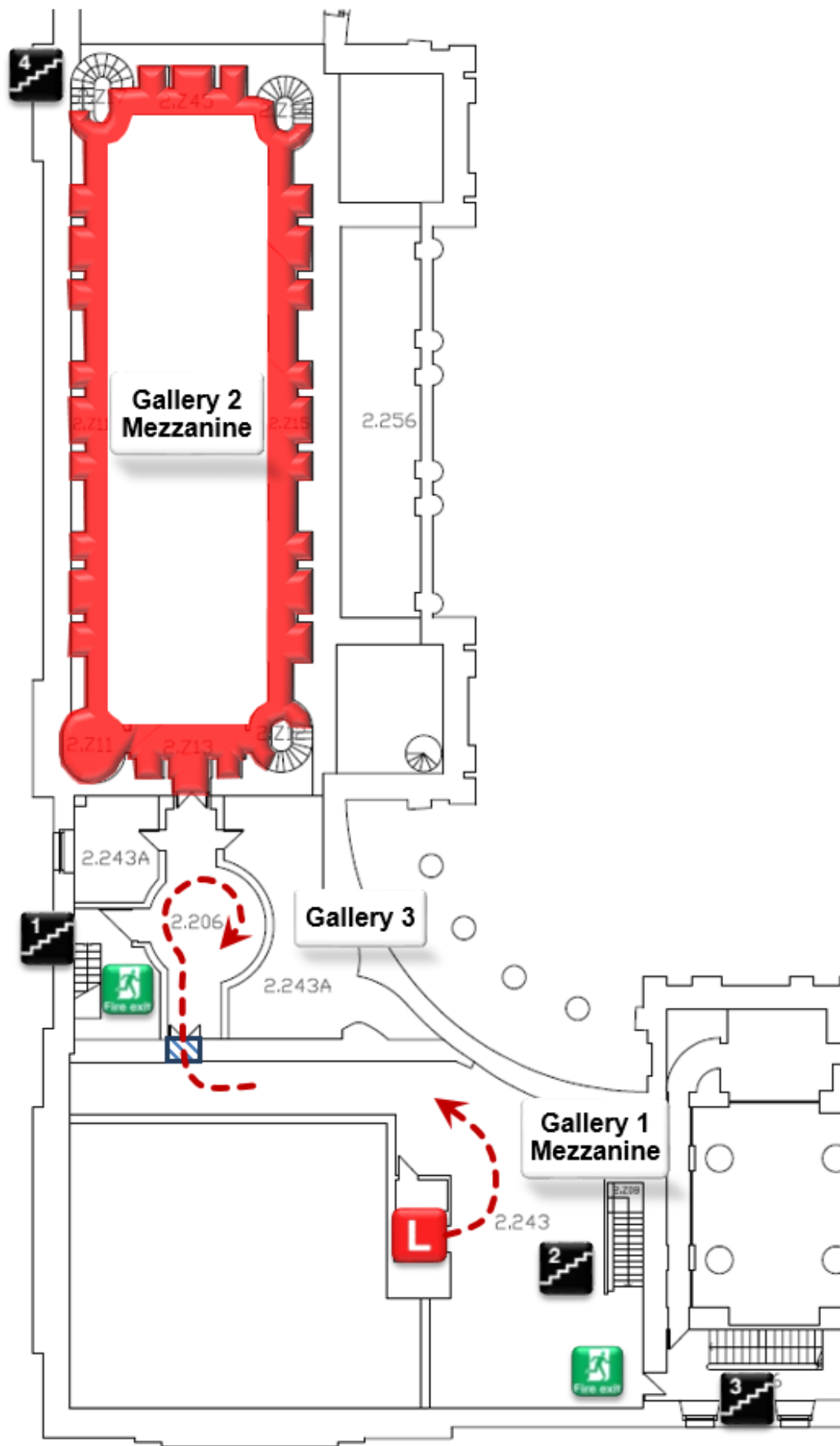
Ground Floor Plan-Talbot Rice Gallery



Second Floor Plan- Talbot Rice Gallery



Third Floor Plan- Talbot Rice Gallery



Talbot Rice Gallery Opening Hours

Normal Gallery Opening Hours:

Monday	Closed
Tuesday	10:00am-5:00pm
Wednesday	10:00am-5:00pm
Thursday	10:00am-5:00pm
Friday	10:00am-5:00pm
Saturday	12:00am-5:00pm
Sunday	Closed

Late Night Opening Hours:

The Talbot Rice Gallery is open between 10am and 7pm on the Last Thursday of the month.

Special Events:

Please check the gallery home page for opening hours relating to events.

[See Links](#)

Contact information

Reception:

0131 650 2210

Gallery Contacts:

Lucy Brown- Gallery Manager

L.Brown@ed.ac.uk

Tommy Stuart- Gallery Technician

Tommy.Stuart@ed.ac.uk

Transport & Parking:

0131 650 9101








transport@ed.ac.uk

University Switchboard:

University Switchboard:

0131 650 1000

Links

-  [University Homepage](#)
-  [Campus Maps](#)
-  [Transport & Parking](#)
-  [City of Edinburgh Council Parking](#)
-  [Bookable Rooms Guides](#)
-  [Student Disability Service](#)
-  [Talbot Rice Gallery Home](#)

THE UNIVERSITY OF EDINBURGH

Talbot Rice Gallery

Central

September 2015